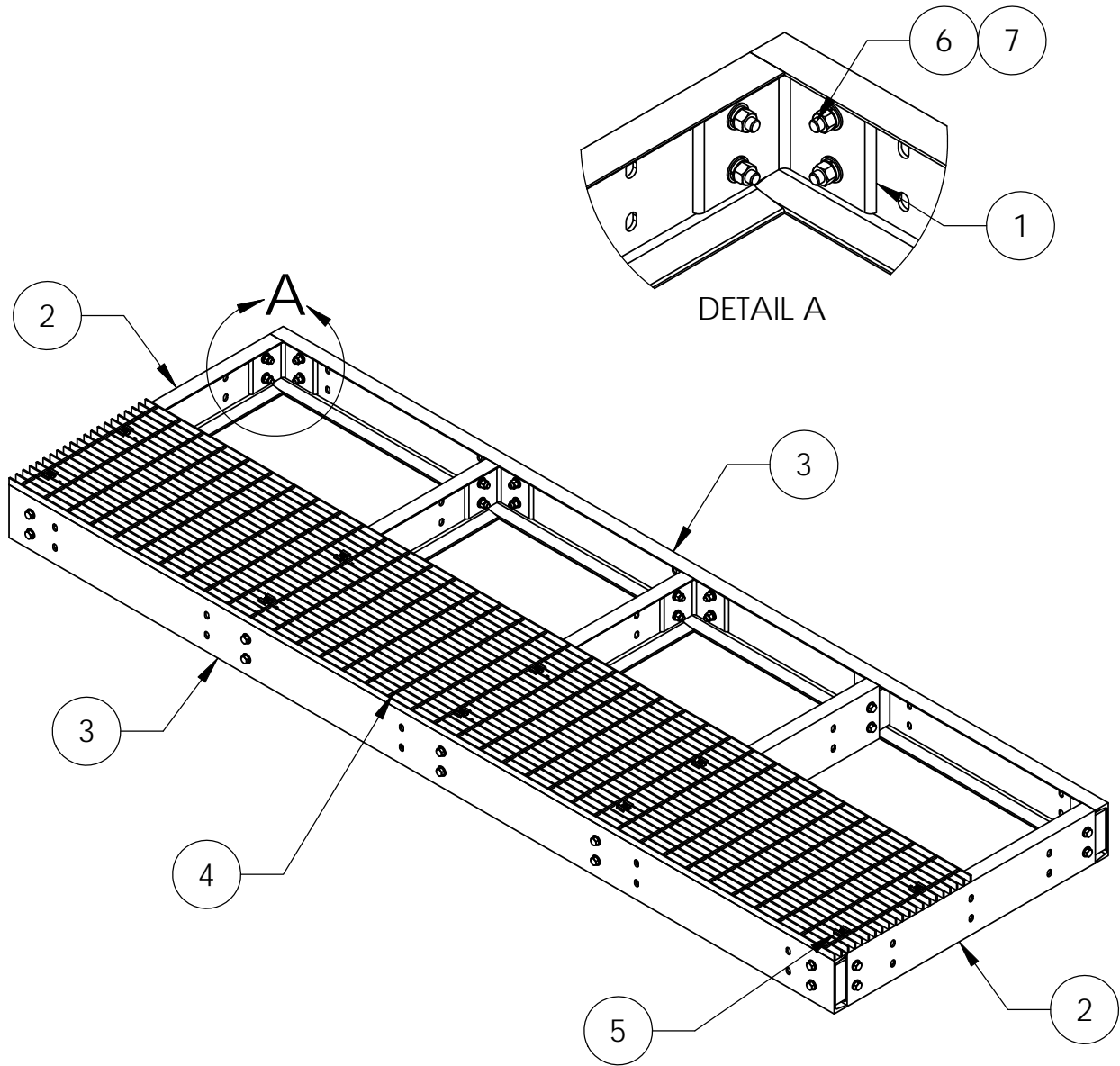
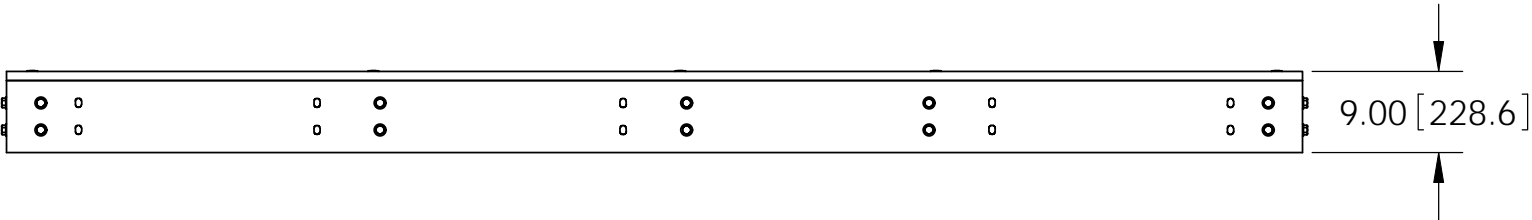
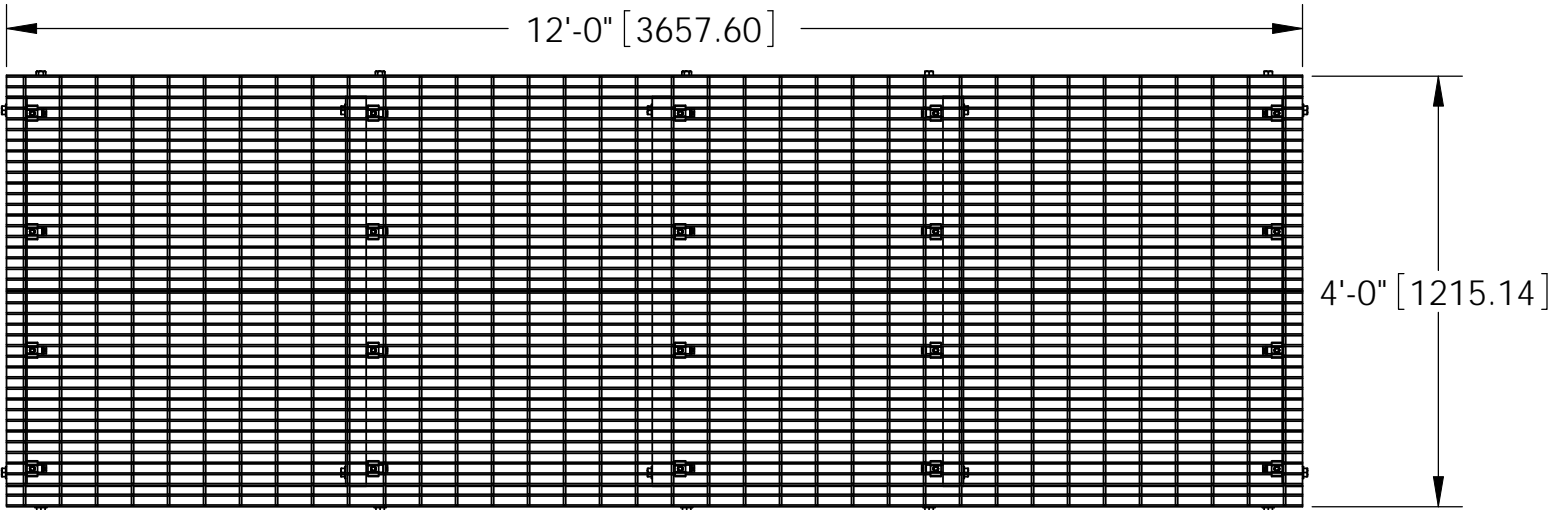



BILL OF MATERIALS				
ITEM	PART NO.	DESCRIPTION	QTY.	WEIGHT
1	MTC7902.03	CHANNEL ADAPTER ANGLE	10	7.07 LBS
2	MTC79020407.02	4' CENTER CHANNEL	5	40.85 LBS
3	MTC7902712.01	12' SIDE CHANNEL	2	136.26 LBS
4	MTC7902712.03	24" X 144" BAR GRATING	2	161.21 LBS
5	GCM03	GRATING CLIP	20	0.40 LBS
6	GB-05205	5/8" X 2" GALV BOLT KIT	40	0.05 LBS
7	GWf-05	5/8" GALV FLAT WASHER	80	0.02 LBS

REVISIONS				
REV.	ZONE	DESCRIPTION	BY	DATE
A		INITIAL RELEASE	DRR	01/19/11



- NOTES:
- ALL METRIC DIMENSIONS ARE IN BRACKETS.
  - UP TO 5% ADDITIONAL HARDWARE INCLUDED.
  - BAR GRATING ALIGNED ACROSS CENTER CHANNELS.

These drawings and specifications are the proprietary property of ANDREW CORPORATION and may be used only for the specific purpose authorized in writing by Andrew Corporation.  ALL DIMENSIONS ARE IN INCHES U.O.S. TOLERANCES UNLESS OTHERWISE SPECIFIED: .X = ± .12      ANGLES      ±2° .XX = ± .06      FRACTIONS      ±1/32 .XXX= ± .031  REMOVE BURRS AND BREAK EDGES .005  DO NOT SCALE THIS PRINT	DRAWN BY: DRR	SHEET: 1 of 1	PART NUMBER: EQ-P0412-B
	CHECKED BY: TP	SCALE: NTS	DESCRIPTION: 4' X 12' PLATFORM BASE
	DATE: 01/19/11	MATERIAL: A36, A568, A529	DRAWING TYPE: ASSEMBLY DRAWING
	REVISION: A	FINISH: GALV A123 WEIGHT: 920.61 LBS	 ORLAND PARK, IL. 60462 U.S.A.