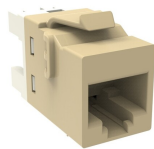


# 1-2291216-1 | KJ610-IV



KJ-Series Modular Jack, RJ45, Cat6 Unshielded, Ivory

## Product Classification

Regional Availability	Asia   Australia/New Zealand   EMEA   Latin America
Portfolio	NETCONNECT®
Product Type	Modular jack
Product Series	KJ Series

## General Specifications

ANSI/TIA Category	6
Cable Type	Unshielded
Color	Ivory
Conductor Type	Solid   Stranded
Integrated Dust Cover Type	None
Mounting	Hubbell® faceplates   Leviton® faceplates   Panduit® faceplates
Mounting Note	Color matches with KJ-style Electric Ivory Faceplates and Surface Mount Boxes
Outlet Type	Keystone
Termination Tool	110 Punchdown tool   SL Termination tool
Termination Type	IDC
Transmission Standards	ANSI/TIA-568-C.2   ISO/IEC 11801 Class E
Wiring	T568A   T568B

## Dimensions

Panel Cutout, recommended	14.79 x 19.31 mm (0.58 x 0.76 in)
Panel Thickness, recommended	1.6 mm   0.063 in
Height	16.13 mm   0.635 in
Width	16.48 mm   0.649 in
Depth	30.48 mm   1.2 in

# 1-2291216-1 | KJ610-IV

Compatible Insulated Conductor Diameter, maximum	1.27 mm   0.05 in
Contact Plating Thickness	1.27 µm
Compatible Conductor Gauge, solid	24–22 AWG
Compatible Conductor Gauge, stranded	26–24 AWG

## Electrical Specifications

Remote Powering	Fully supports the safe delivery of power over LAN cabling described by IEEE 802.3bt (Type 4) and complies with the unmating under electrical load requirements prescribed by IEC 60512-99-002
PoE Durability	Supports IEEE 802.3bt Type 4 (90 W) applications after 3000 plug to jack mating cycles

## Material Specifications

Contact Base Material	Beryllium copper
Contact Plating Material	Gold
Material Type	Polycarbonate

## Mechanical Specifications

Plug to Jack Mating Cycles	Complies to IEC 60603-7 series
----------------------------	--------------------------------

## Environmental Specifications

Flammability Rating	UL 94 V-0
---------------------	-----------

## Packaging and Weights

Packaging quantity	1
Packaging Type	Bag

## Regulatory Compliance/Certifications

Agency	Classification
CHINA-ROHS	Below maximum concentration value
REACH-SVHC	Compliant as per SVHC revision on <a href="https://www.commscope.com/ProductCompliance">www.commscope.com/ProductCompliance</a>
ROHS	Compliant
UK-ROHS	Compliant

