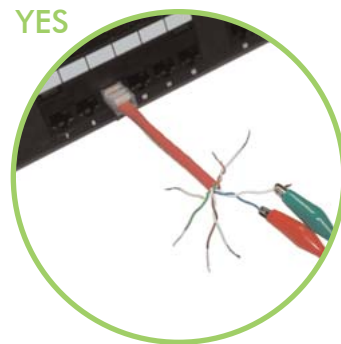


Frustrated with Potentially Damaging Test Probes? Relax! There is a better way.

Need to Test. Within the past few years, it has become evident that -- at faster data rates - network performance testing is necessary to verify local area network (LAN) performance, channel throughput and signal quality. However, not all test equipment is intended to be used on all products.

Pick the Right Tool. Identifying a completely safe, yet highly effective testing method can be frustrating. The CommScope Uniprise certification process requires the testing of Uniprise Solution installations with standards-compliant hand held testers using Permanent Link/Channel Adapters and RJ45 cords.

One, two...testing. We understand that for faster cable tracing, some installers may use devices such as tone generators, in lieu of the aforementioned compliant testing equipment. Unfortunately, some tone generators on the market today use pointed probes, which could compromise your critical network. It should be noted, therefore, that the insertion of pointed probes used in tone generators should be completely avoided.



There is a better way. In order to avoid the risk of damage to your high performance products, follow these simple guidelines:

- Let's get right to (or away from!) the point. We recommend that you never insert pointed probes or any other sharp objects into Uniprise jacks (UNJ300, UNJ500, UNJ600) and modular panels (UNP350, UNP500, UNP550, and UNP600). The pointed probes have been known to distort or even dislodge spring-loaded contacts from their individual positions, leading to irreparable damage when a plug is later inserted into the module.
- If a probe is needed at the module, it may be used, but only at the rear/cable termination side of the module. Instead, use a probe fitted with an RJ45 plug, to trace the circuits from the front.

Worry-free testing. By following these simple steps, you can experience the ease and assurance of maintaining your quality Uniprise modules safely and effectively. Then you can relax and focus on building your business!

Please contact your local Uniprise Technical Support or Applications Engineering representative at 866.484.6277 if you have any additional questions.

Recommended Testers:



Agilent Technologies WireScope



Ideal LanTek



Fluke®



Corporate Office
1100 CommScope Place SE P.O. Box 1729
Hickory, North Carolina (USA) 28603-1729
Tel 828.459.5000 800.544.1948 Fax 828.459.5099
www.uniprisesolutions.com

© 2005 CommScope Inc. All Rights Reserved