

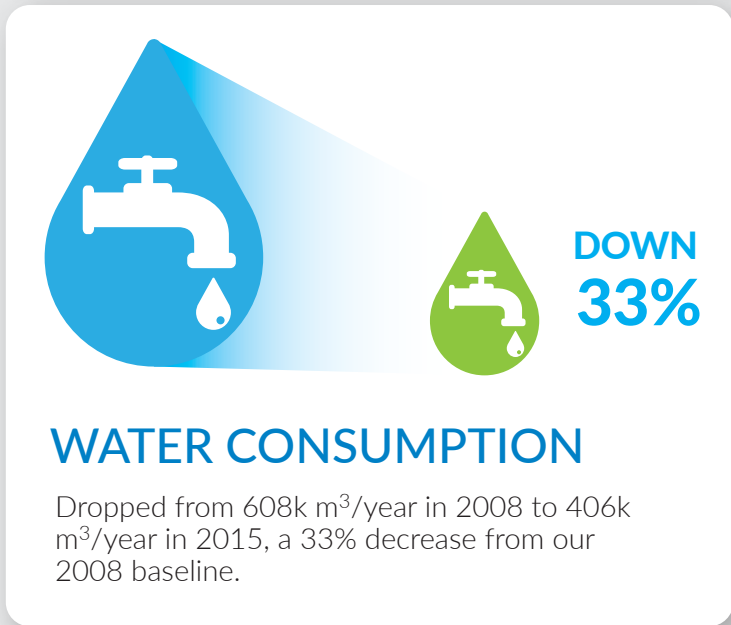
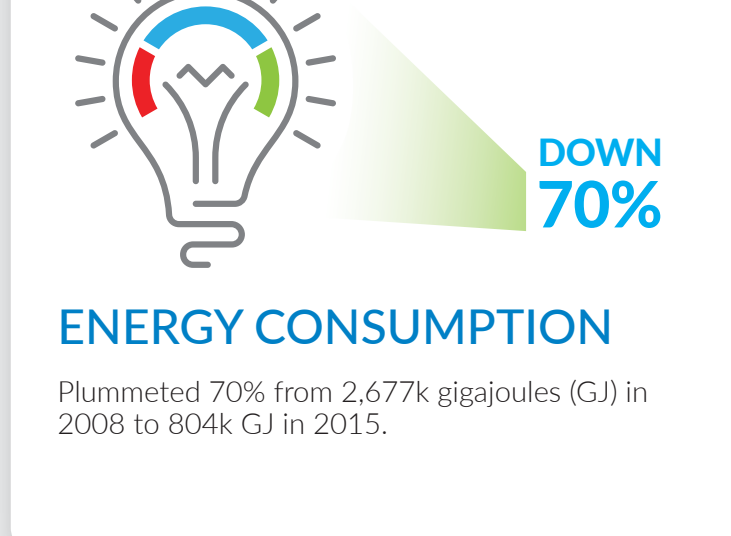
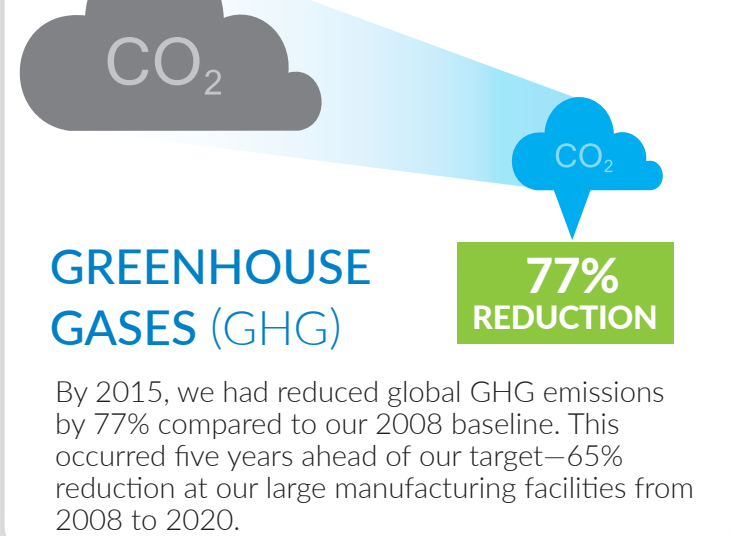


# INVESTING IN OUR FUTURE

## COMMITMENT TO ENVIRONMENTAL PROGRESS AND SUSTAINABILITY

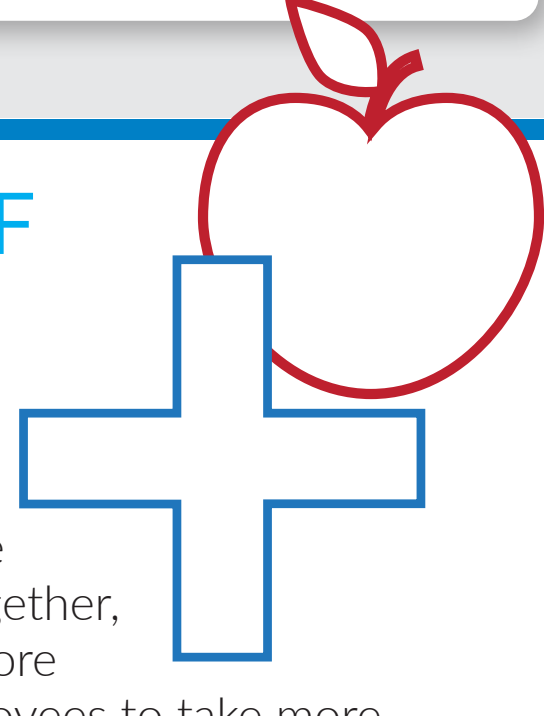
### COMMSCOPE'S WORLDWIDE PRESENCE IS GROWING.

At the same time, our increasing economic footprint is actually producing a smaller environmental impact. These achievements reflect our commitment to protecting our planet:



## CREATING A CULTURE OF HEALTH AND SAFETY

**WE'RE STRIVING TO CREATE A SAFER WORKPLACE**, where our employees make healthy lifestyle decisions that lead to enjoyable careers and vibrant, balanced lives. Working together, let's make CommScope a safer, healthier and more productive workplace. We're encouraging employees to take more ownership over their personal safety, and the safety of their co-workers.



SAFETY STARTS WITH ME!



**68%** reduction in workplace recordable injury rate from 2008 to 2015



**77%** reduction in lost and restricted workday rate from 2008 to 2015



**625** EMPLOYEES LOST **2,231** lb  
Weight loss challenge—an average 3.5 pounds per person

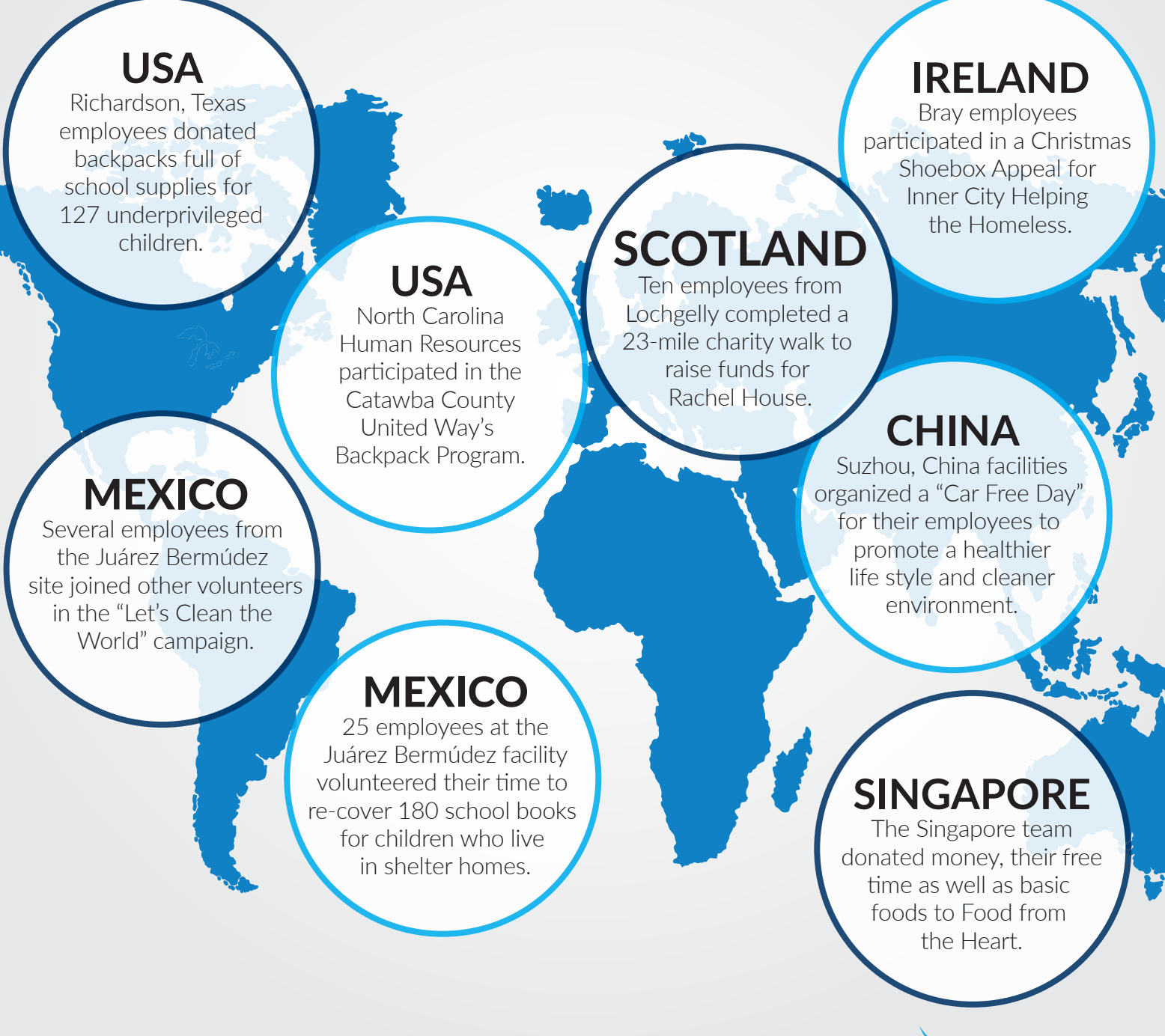


**9,500** STEPS A DAY  
Step challenge—661 employees walked more than 124 million steps, almost 2 times around the world.



## WORKING TOWARDS SOCIAL PROGRESS

**OUR EMPLOYEES AROUND THE WORLD ARE MAKING MEANINGFUL CONTRIBUTIONS** that positively impact our local communities.



## OPERATING WITH HONESTY AND INTEGRITY



**COMMSCOPE IS COMMITTED TO THE HIGHEST STANDARDS OF HONEST AND TRANSPARENT BUSINESS PRACTICES.**

"Our mission (enabling communications) and our core values (integrity, innovation and agility) are a great platform for helping solve more of our customer's complex networking problems in a bandwidth-driven society."

"Our commitment to our people and to the communities where we live and work drives us to provide innovative solutions, services and practices that are safe and sustainable for our environment and future generations."

You can expect more from us.  
**EDDIE EDWARDS**  
President and Chief Executive Officer

