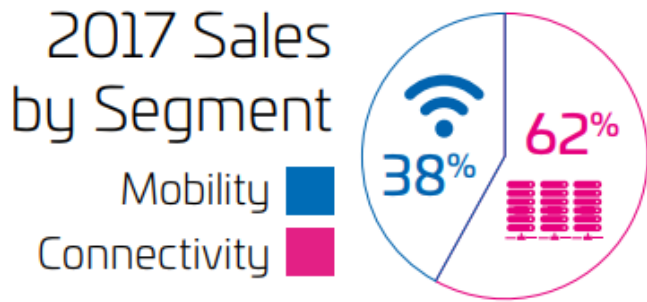


U.K. Modern Slavery and Human Trafficking Act Disclosure Statement 2017



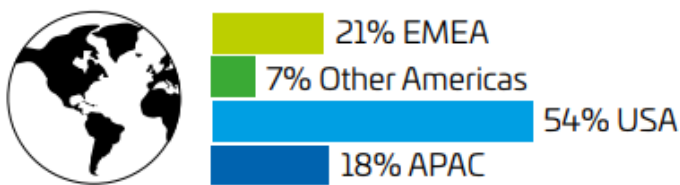
This statement is intended to meet CommScope's reporting obligations under the U.K. Modern Slavery Act (2015). This statement describes our efforts to address modern slavery and covers CommScope's consolidated business, including all wholly owned and controlled subsidiaries. Unless otherwise noted, all information and data in this statement pertains to activities that transpired between January 1, 2017 and December 31, 2017 (fiscal year).

CommScope's leaders have adopted a sustainable philosophy on corporate responsibility that embraces our core company values and holds us accountable to produce smart solutions that respect our people and our planet:



Meaningful integrity is a decisive personal and company-wide commitment to enable faster, smarter and more sustainable solutions while demonstrating the utmost respect for our human and natural resources.

2017 Sales by Geography

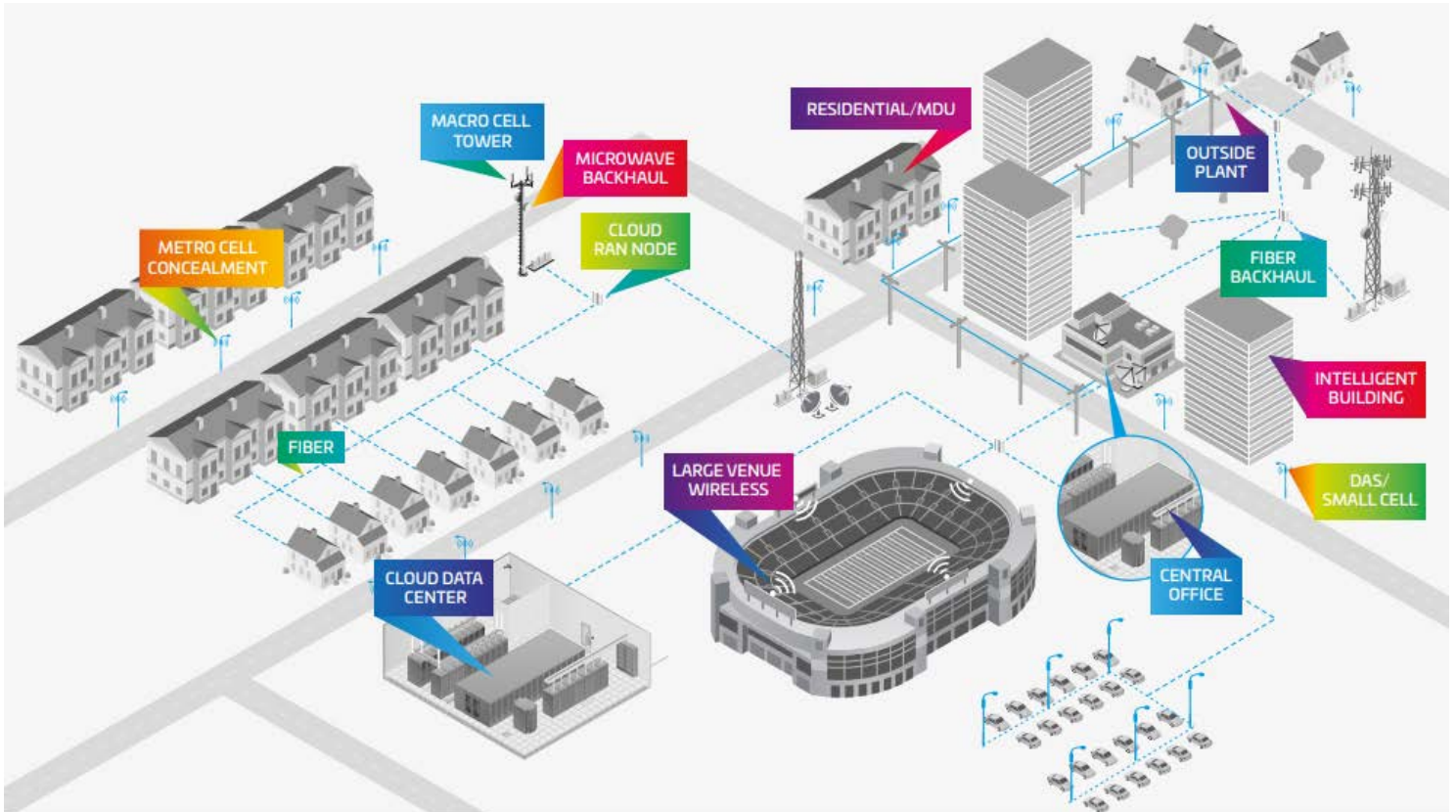


Our commitment enables us to invest wisely in our future. By utilizing innovative technology, intelligent engineering and energy-efficient designs, we're building sustainable networks that make our customers more agile while also preserving the natural ecosystems from which we source our raw materials.

We believe fiber and wireless technologies will be the essential building blocks of virtually all bandwidth-intensive networks of the future.



Powerful Portfolio for Networks of the Future



CommScope Mobility Solutions Segment

- Radio frequency wireless network connectivity solutions, as well as metro cell, DAS and small cell solutions
- Macro cell solutions for wireless tower sites and on rooftops
- Metro cell solutions for street poles and on other urban structures
- DAS and small cell solutions for enhancing cellular coverage and capacity in challenging network conditions such as commercial buildings, urban areas, stadiums and transportation systems

CommScope Connectivity Solutions Segment

- Connectivity and network intelligence for indoor and outdoor network applications
- Indoor network solutions for commercial buildings and the network core—which includes data centers, central offices and cable TV headends
- Outdoor network solutions for access and edge networks

Plans for 2018/2019

- Supplier Code of Conduct update
- Supplier Sustainability Assessment program update
- Training update targeted for specific functions to reflect updates in the Supplier Sustainability Assessment program
- Supplier awareness program introduction

CommScope Supply Chain

CommScope sources its materials and components from a worldwide network of suppliers. We have approximately 3,400 active suppliers and contract manufacturers around the globe, 500 of these being strategic.

The principal raw materials and components we purchase are made of metals such as copper, steel, aluminum or brass; plastics and other polymers; and optical fiber. This also includes purchase of circuit boards and other electronic components. We are dependent on a limited number of key suppliers. We source many of our materials and components from international markets. We rely on unaffiliated contract manufacturers, both domestically and internationally, to produce certain products or key components of products.

Policies and Principles

CommScope implemented internal policies and practices that are aligned with recognized standards and guidelines from the International Labor Organization, the United Nations Global Compact, the UN Universal Declaration of Human Rights, SA8000, ISO26000, ISO14001, ISO45001 and applicable laws.

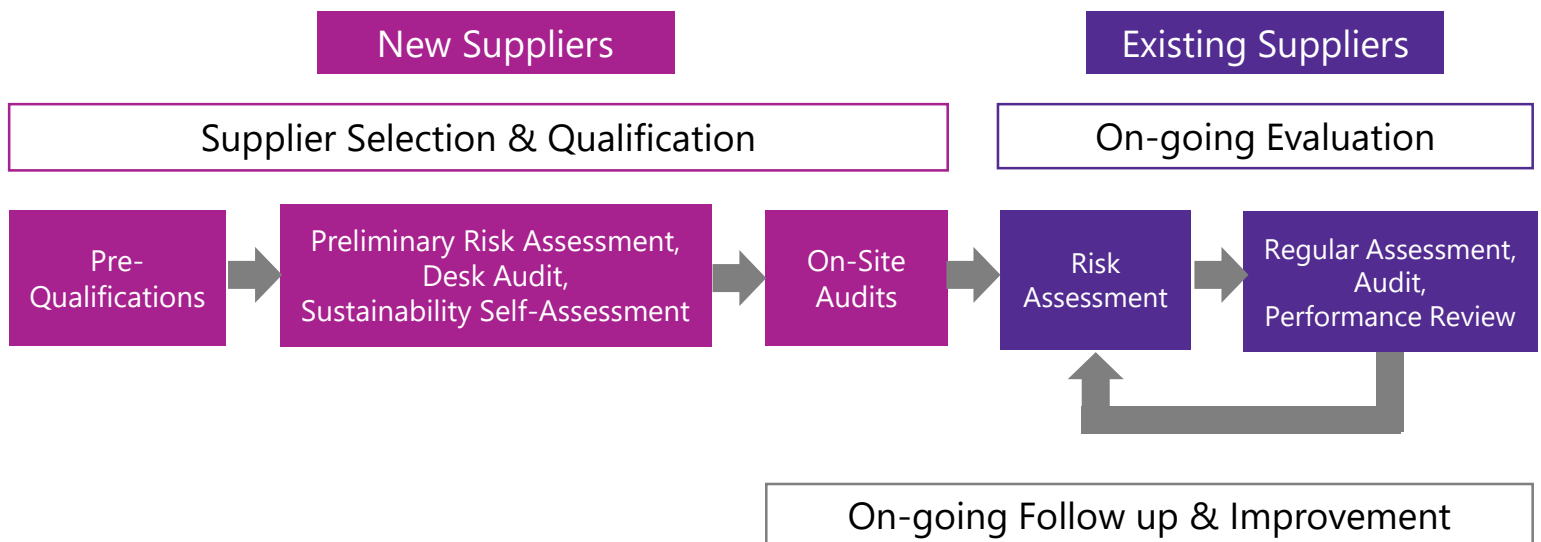
CommScope key policies are available in various languages in a [document library](#) on the company website.

CommScope is committed to conducting its business in an ethical, legal and socially responsible manner. We expect our suppliers to share this commitment; therefore, we have established our [Supplier Code of Conduct](#).

Due Diligence, Risk Assessment and Management

In accordance with the international standards supporting our management systems, we regularly assess risks and opportunities related to labor, ethics and environmental, health and safety practices. We have taken multiple actions and steps to verify the absence of any form of forced labor or slavery throughout our operations and supply chain:

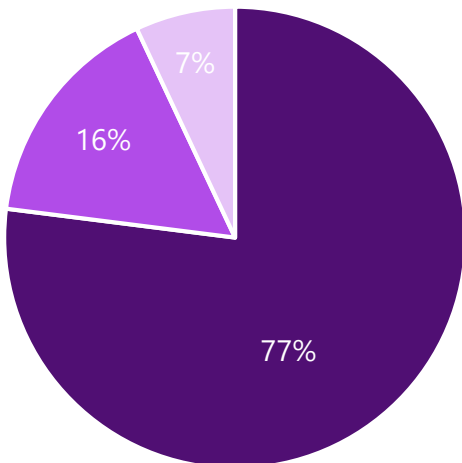
- **Company Policies**
(Code of Ethics and Business Conduct, Labor Policy, Child Labor Policy, Supplier Code of Conduct, Supplier Quality Manual, Conflict Minerals Policy)
- Supplier Agreements and T&Cs of Purchase
- **Risk Assessments**
 - Company level via EcoVadis and QuEST
 - Facility level (manufacturing facilities) via RBA ONLINE
- **Internal Audits**
- Employee Engagement, Training and Development
- **Grievance Mechanism**
- **Responsible Sourcing** program
- **Supplier Selection and Evaluation**
These processes include supplier risk assessments and on-site audits



CommScope works with its suppliers, existing and new, to address gaps identified during the audits and expects any gaps to be closed within a specified timeframe. In addition to all other legal and contractual rights, CommScope reserves the right to disqualify any potential supplier or terminate its relationship with any current supplier found to be in violation of our Supplier Code of Conduct. CommScope conducted 400 supplier audits/on-site assessments in 2017 and no incidents of forced labor were found.

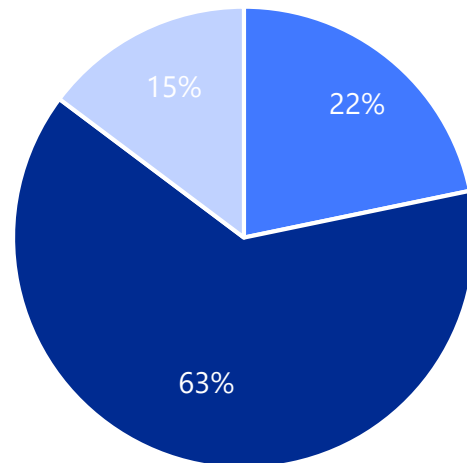
Supplier Sustainability Assessments
by identified risk levels
conducted in 2017

■ Low Risk ■ Medium Risk ■ High Risk



Supplier Sustainability Assessments
by region
conducted in 2017

■ Americas ■ Asia-Pacific ■ Europe, Middle East, Africa



CommScope remains committed to the highest standards of honest and transparent business practices, and continues to review its policies and processes annually in an effort to ensure that slavery and human trafficking is not taking place in its supply chain.

Eddie Edwards
President and Chief Executive Officer

June 29, 2018

About CommScope:

CommScope (NASDAQ: COMM) helps design, build and manage wired and wireless networks around the world. As a communications infrastructure leader, we shape the always-on networks of tomorrow. For more than 40 years, our global team of greater than 20,000 employees, innovators and technologists have empowered customers in all regions of the world to anticipate what's next and push the boundaries of what's possible. Discover more at <http://www.commscope.com>.



COMMSCOPE®

commscope.com

© 2018 CommScope, Inc. All rights reserved.
All trademarks identified by ® or ™ are
registered trademarks or trademarks,
respectively, of CommScope.