

U.K. Modern Slavery and Human Trafficking Act Disclosure Statement 2016

This statement is intended to meet CommScope's reporting obligations under the U.K. Modern Slavery Act (2015). This statement describes our efforts to address modern slavery and covers CommScope's consolidated business, including all wholly owned and controlled subsidiaries. Unless otherwise noted, all information and data in this statement pertains to activities that transpired between January 1, 2016 and December 31, 2016 (fiscal year).

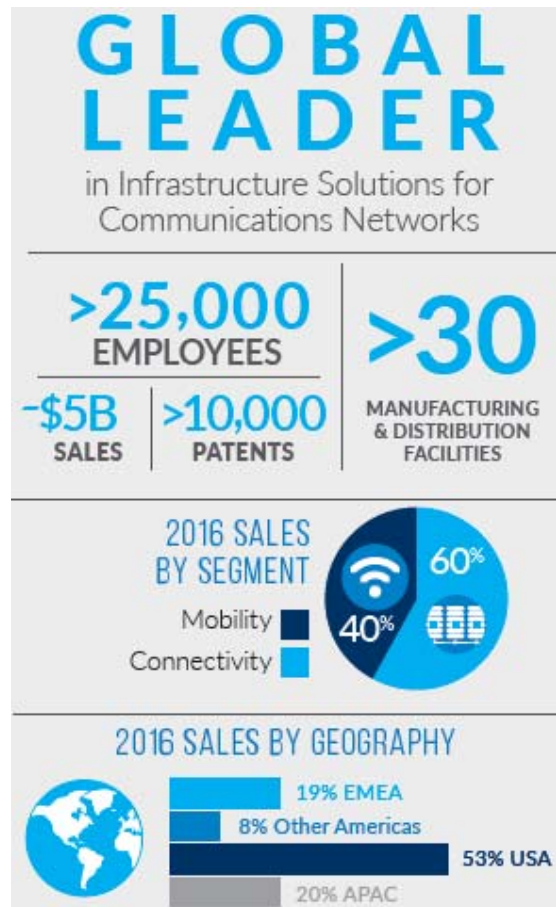
CommScope's leaders have adopted a sustainable philosophy on corporate responsibility that embraces our core company values and holds us accountable to produce smart solutions that respect our people and our planet:

Meaningful integrity is a decisive personal and company-wide commitment to enable faster, smarter and more sustainable solutions while demonstrating the utmost respect for our human and natural resources.

Our commitment enables us to invest wisely in our future. By utilizing innovative technology, intelligent engineering and energy-efficient designs, we're building sustainable networks that make our customers more agile while also preserving the natural ecosystems from which we source our raw materials.

CommScope Business

CommScope is one of the world's premier network infrastructure providers. We enable and empower many of the top-performing wireless, telecommunications, business enterprise, broadband and cable television networks in existence today. The most advanced networks run on CommScope technology, serving customers in more than 100 nations, with more than 25,000 employees, through a wide variety of wireless and connectivity solutions.



COMMSCOPE CONNECTIVITY SOLUTIONS (CCS) COMMSCOPE MOBILITY SOLUTIONS (CMS)



- Connectivity and network intelligence for indoor and outdoor network applications



- Indoor network solutions are found in commercial buildings and in the network core—which includes data centers, central offices and cable TV headends



- Outdoor network solutions are found in access and edge networks



- Radio frequency wireless network connectivity solutions, as well as metro cell, DAS and small cell solutions



- Macro cell solutions can be found at wireless tower sites and on rooftops



- Metro cell solutions can be found on street poles and on other urban structures



- DAS and small cell solutions enhance cellular coverage and capacity in challenging network conditions such as commercial buildings, urban areas, stadiums and transportation systems

CommScope Supply Chain

CommScope sources its materials and components from a worldwide network of suppliers. We have approximately 3,700 active suppliers and contract manufacturers around the globe, 550 of these being strategic.

The principal raw materials and components we purchase are made of metals such as copper, steel, aluminum or brass; plastics and other polymers; and optical fiber. This also includes purchase of circuit boards and other electronic components. We are dependent on a limited number of key suppliers. We source many of our components from international markets. We rely on unaffiliated contract manufacturers, both domestically and internationally, to produce certain products or key components of products.

Policies and Principles

CommScope implemented internal policies and practices that are aligned with recognized standards and guidelines from the International Labor Organization, the United Nations Global Compact, the UN Universal Declaration of Human Rights, SA8000, ISO26000, ISO14001, OHSAS18001 and applicable laws.

CommScope key policies are available in various languages in a [document library](#) on the company website.

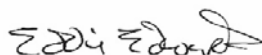
CommScope is committed to conducting its business in an ethical, legal and socially responsible manner. We expect our suppliers to share this commitment; therefore, we have established our [Supplier Code of Conduct](#).

Due Diligence, Risk Assessment and Management

In accordance with the international standards supporting our management systems, we regularly assess risks and opportunities related to labor, ethics and environmental, health and safety practices. We have taken multiple actions and steps to verify the absence of any form of forced labor or slavery throughout our operations and supply chain:

- [Company Policies](#)
(Code of Ethics, Labor Policy, Child Labor Policy, Supplier Code of Conduct, Conflict Minerals Policy)
- Supplier Agreements
- [Risk Assessments](#) via EcoVadis (company level) and EICC-ON (facility level, manufacturing facilities)
- [Internal Audits](#)
- [Supplier Selection and Evaluation](#) processes including Supplier Assessments and On-site Audits
CommScope works with its suppliers to address gaps identified during the audits and expects any gaps to be closed within a specified timeframe. In addition to all other legal and contractual rights, CommScope reserves the right to disqualify any potential supplier or terminate its relationship with any current supplier found to be in violation of our Supplier Code of Conduct. CommScope conducted 326 supplier audits in 2016, no incidents of forced labor found.
- [Responsible Sourcing](#) program
- Employee Engagement, Training and Development
- [Grievance Mechanism](#)

CommScope remains committed to the highest standards of honest and transparent business practices, and continues to review its policies and processes annually in an effort to ensure that slavery and human trafficking is not taking place in its supply chain.



Eddie Edwards

June 23, 2017

President and Chief Executive Officer