



Preferred ordering guide for NETCONNECT

CALA Region

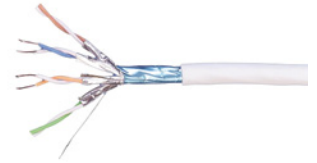
COMMSCOPE®



Contents

Copper solutions	3
Category 7A products	3
Category 7A copper cables	3
Category 7A copper panels.....	3
Category 7A jacks.....	4
AMP-TWIST 7AS patch cords	4
Category 6A Products	5
Category 6A U/UTP copper cables.....	5
Category 6A U/UTP panels.....	5
Category 6A U/UTP jacks	6
- SL opening (without dust cover)	6
- SL opening (with dust cover)	6
Category 6A U/UTP copper patch cords	7
Category 6A F/UTP copper cables.....	8
Category 6A modular shielded panels.....	8
Category 6A shielded jacks	8
Category 6A F/UTP copper patch cords	9
Category 6 Products	10
Category 6 U/UTP copper cables	10
Category 6 U/UTP copper panels.....	10
Category 6 U/UTP jacks.....	11
- SL opening (without dust cover)	11
- SL opening (with dust cover)	11
- Keystone opening	11
Category 6 U/UTP copper patch cords.....	12
Fiber Solutions	14
Fiber optic cables	14
- Indoor/outdoor cables	14
- Outdoor cables	14
Fiber connectivity	18
Fiber optic panels.....	18
- 1000-type panel and wall enclosures.....	18
Adapter panels for 1U, 2U and 4U Shelves.....	18
- 1000-type panel compatible adapter panels	18
Fiber patch cords	19
Fiber pigtails	19

The CommScope NETCONNECT ordering guide for Central and Latin America regions contains commonly ordered copper and fiber structured cabling products. This information is subject to change. For a comprehensive, up-to-date listing of CommScope products, please go to www.commscope.com.



Material ID	Description	Rating	AWG	Jacket Color	Length	Packaging	Availability
Category 7A copper cables							
1499101-1	Copper cable, Category 7A, 4 pair, S/FTP	LSFRZH	22 AWG	White	305 m/ 1000 ft	Reel	Colombia



Material ID	Description	Availability
Category 7A copper panels		
1-1671157-2	Patch Panel, Hi-D, angled, unloaded, shielded, 24-port, 1U	Colombia
1933307-1	Multimedia SL series patch panel, front-load 6 module, straight, unloaded, 24-port (No jacks)	Colombia
1933308-1	Multimedia SL series Patch panel, front-load 6 module, angled, unloaded, 24-port (No jacks)	Colombia



Material ID	Description	Availability
Category 7A jacks		
1711437-1	SL series modular jack, 8-position, Category 7AS	Colombia
1711441-1	SL series modular jack, 8-position, Category 7AS, with dust cover	Colombia



Material ID	Description	Availability
AMP-TWIST 7AS patch cords		
Y-1711613-X	AMP-TWIST 7AS (2 Pair) to RJ-45 Patch Cord, S/FTP, Category 5e-rated, LSZH	Colombia
Y-1711623-X	AMP-TWIST 7AS Telephone Patch Cord RJ-11 to 1pair plug acc. to IEC 61076-3-104 (Category 3-rated) LSZH	Colombia
Y-1711624-X	AMP-TWIST 7AS to CATV Patch Cord - PAL or male F-Series connector with integrated balun to 1 pair plug acc. to IEC 61076-3-104 LSZH	Colombia
Y-336488-X	AMP-TWIST 7AS to RJ-45 Patch Cord (Category 6A-rated) S/FTP Patch Cord LSZH	Colombia

NOTE: Y- -X Length
 0- -1 1.0 meters
 0- -2 2.0 meters
 0- -3 3.0 meters

Category 6A U/UTP products



Material ID	Description	Rating	AWG	Jacket Color	Length	Packaging	Availability
Category 6A U/UTP cables							
2171013-1	Copper cable, Category 6A, 4 pair, U/UTP	CMR	23 AWG	Blue	305 m/ 1000 ft	Reel	Mexico
2171013-4	Copper cable, Category 6A, 4 pair, U/UTP	CMR	23 AWG	Gray	305 m/ 1000 ft	Reel	Mexico
2171013-7	Copper cable, Category 6A, 4 pair, U/UTP	CMR	23 AWG	White	305 m/ 1000 ft	Reel	Mexico



Material ID	Description	Availability
Category 6A U/UTP panels (Jacks not included)		
2111570-1	Patch panel standard, Category 6A, 1U, 24-port	Mexico
2111571-1	Patch panel standard, Category 6A, 2U, 48-port	Mexico
2111572-1	Patch panel angled, Category 6A, 1U, 24-port	Mexico
2111573-1	Patch panel angled, Category 6A, 2U, 48-port	Mexico

Category 6A U/UTP products

Material ID	Description	Color	Availability
Category 6A unshielded U/UTP jacks			
SL Opening (without dust cover)			
1933476-1	Category 6A U/UTP SL jack - without dust cover	Almond	Mexico
1933476-2	Category 6A U/UTP SL jack - without dust cover	Black	Mexico
1933476-4	Category 6A U/UTP SL jack - without dust cover	Gray	Mexico
1933476-5	Category 6A U/UTP SL jack - without dust cover	Orange	Mexico
1933476-6	Category 6A U/UTP SL jack - without dust cover	Blue	Mexico
1933476-7	Category 6A U/UTP SL jack - without dust cover	Red	Mexico
1933476-8	Category 6A U/UTP SL jack - without dust cover	Yellow	Mexico
1933476-9	Category 6A U/UTP SL jack - without dust cover	Green	Mexico
1-1933476-0	Category 6A U/UTP SL jack - without dust cover	Violet	Mexico
1-1933476-1	Category 6A U/UTP SL jack - without dust cover	Electrical Ivory	Mexico
1-1933476-3	Category 6A U/UTP SL jack - without dust cover	Alpine White	Mexico



Material ID	Description	Color	Availability
Category 6A unshielded U/UTP jacks			
SL Opening (with dust cover)			
2111676-1	Category 6A U/UTP SL jack - with dust cover	Almond	Mexico
2111676-2	Category 6A U/UTP SL jack - with dust cover	Black	Mexico
2111676-4	Category 6A U/UTP SL jack - with dust cover	Gray	Mexico
2111676-5	Category 6A U/UTP SL jack - with dust cover	Orange	Mexico
2111676-6	Category 6A U/UTP SL jack - with dust cover	Blue	Mexico
2111676-7	Category 6A U/UTP SL jack - with dust cover	Red	Mexico
2111676-8	Category 6A U/UTP SL jack - with dust cover	Yellow	Mexico
2111676-9	Category 6A U/UTP SL jack - with dust cover	Green	Mexico
1-2111676-0	Category 6A U/UTP SL jack - with dust cover	Violet	Mexico
1-2111676-1	Category 6A U/UTP SL jack - with dust cover	Electrical Ivory	Mexico
1-2111676-3	Category 6A U/UTP SL jack - with dust cover	Alpine White	Mexico



Category 6A U/UTP products



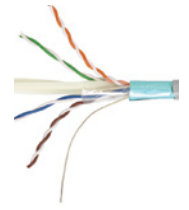
Material ID	Description	Rating	Color	Availability
Category 6A U/UTP patch cords				
6645-2-805-##	Category 6A, U/UTP	CM	White	Mexico
6645-2-825-##	Category 6A, U/UTP	CM	Blue	Mexico
6645-2-865-##	Category 6A, U/UTP	CM	Gray	Mexico
6645-2-845-##	Category 6A, U/UTP	CM	Green	Mexico
6645-2-855-##	Category 6A, U/UTP	CM	Orange	Mexico
6645-2-815-##	Category 6A, U/UTP	CM	Red	Mexico
6645-2-835-##	Category 6A, U/UTP	CM	Yellow	Mexico
6645-2-885-##	Category 6A, U/UTP	CM	Black	Mexico

NOTE: Replace ## with length
 01 – 0.3 meters
 04 – 1.0 meters
 07 – 2.0 meters

Material ID	Description	Rating	Availability
Category 6A U/UTP patch cords unshielded			
TCPC-6AUFVB-XXYYF	Category 6A, U/UTP, unshielded	CM	Mexico

NOTE: Replace XX with color: **WT** = White, **YL** = Yellow, **RD** = Red, **GN** = Green, **BL** = Blue, **GY** = Gray
 Replace YY for length:
 04 = 4 feet
 07 = 7 feet
 10 = 10 feet

Category 6A F/UTP products



Material ID	Description	Rating	AWG	Jacket Color	Length	Packaging	Availability
Category 6A F/UTP cables							
x-1859222-2	Copper cable, Category 6A, 4 pair, F/UTP	CM	23 AWG	White	305 m/ 1000 ft	Reel	Argentina, Colombia, Chile/Peru/Brazil
x-1859222-4	Copper cable, Category 6A, 4 pair, F/UTP	CM	23 AWG	Gray	305 m/ 1000 ft	Reel	Argentina, Colombia, Chile/Peru/Brazil
x-1859222-6	Copper cable, Category 6A, 4 pair, F/UTP	CM	23 AWG	Blue	305 m/ 1000 ft	Reel	Argentina, Colombia, Chile/Peru/Brazil
x-1859349-2	Copper cable, Category 6A, 4 pair, F/UTP	CMR	23 AWG	White	305 m/ 1000 ft	Reel	Argentina, Colombia, Chile/Peru/Brazil
x-1859349-4	Copper cable, Category 6A, 4 pair, F/UTP	CMR	23 AWG	Gray	305 m/ 1000 ft	Reel	Argentina, Colombia, Chile/Peru/Brazil
x-1859349-6	Copper cable, Category 6A, 4 pair, F/UTP	CMR	23 AWG	Blue	305 m/ 1000 ft	Reel	Argentina, Colombia, Chile/Peru/Brazil
1859218-2	Copper cable, Category 6A, 4 pair, F/UTP	LSZH	23 AWG	White	305 m/ 1000 ft	Reel	Argentina, Colombia, Chile/Peru/Brazil
1859218-4	Copper cable, Category 6A, 4 pair, F/UTP	LSZH	23 AWG	Gray	305 m/ 1000 ft	Reel	Argentina, Colombia, Chile/Peru/Brazil
1859218-6	Copper cable, Category 6A, 4 pair, F/UTP	LSZH	23 AWG	Blue	305 m/ 1000 ft	Reel	Argentina, Colombia, Chile/Peru/Brazil
1859381-2	Copper cable, Category 6A, 4 pair, F/UTP	FRLSZH	23 AWG	White	305 m/ 1000 ft	Reel	Colombia, Chile/Peru
4-1499389-3	Copper cable, Category 6A, 4 pair, F/UTP	CMR	24 AWG	Gray	305 m/ 1000 ft	Reel	Mexico
4-1499389-1	Copper cable, Category 6A, 4 pair, F/UTP	CMR	24 AWG	White	305 m/ 1000 ft	Reel	Mexico

NOTE: x = 5 for ANATEL cables, otherwise leave blank



Material ID	Description
Category 6A F/UTP modular shielded panels (all sub-regions)	
1933319-2	RJ45 patch panel modular shielded HSG, Category 6A, RJ45, standard, 24-port, front-load 6-port, black (Jacks included)
1933321-2	RJ45 patch panel modular shielded HSG, Category 6A, RJ45, unloaded, angled, 24-port, front-load 6-port, black (Jacks included)
1933307-1	Multimedia SL series patch panel, front-load 6 module, straight, unloaded, 24-port (No jacks)
1933309-1	Multimedia SL series patch panel, front-load 6 module, angled, unloaded, 24-port (No jacks)

Material ID	Description
Category 6A shielded jacks (all sub-regions)	
SL Opening	
1711342-2	SL series modular jack, 4 pair, shielded cables, rear exit
1711160-2	SL series modular jack, 4 pair, shielded cables, rear exit, with dust cover
1711343-2	SL series modular jack, 4 pair, shielded cables, side exit
1711295-2	SL series modular jack, 4 pair, shielded cables, side exit, with dust cover
1711716-1	SL series modular jack, 6AS, shielded cables, 4 pair, rear exit
1711592-1	SL series modular jack, 6AS, shielded cables, 4 pair, rear exit, with dust cover



Category 6A shielded products

Material ID	Description	Rating	Color	Availability
Category 6A shielded copper patch cords				
Y-1711815-X	Category 6A, S/FTP	LSZH	White	Argentina, Colombia, Chile/Peru/Brazil
Y-1711816-X	Category 6A, S/FTP	LSZH	Blue	Argentina, Colombia, Chile/Peru/Brazil
Y-1711817-X	Category 6A, S/FTP	LSZH	Gray	Argentina, Colombia, Chile/Peru/Brazil
Y-1711820-X	Category 6A, S/FTP	LSZH	Green	Argentina, Colombia, Chile/Peru/Brazil
Y-2153011-X	Category 6A, S/FTP	LSZH	Orange	Argentina, Colombia, Chile/Peru/Brazil
Y-1711819-X	Category 6A, S/FTP	LSZH	Red	Argentina, Colombia, Chile/Peru/Brazil
Y-1711818-X	Category 6A, S/FTP	LSZH	Yellow	Argentina, Colombia, Chile/Peru/Brazil
Y-1711821-X	Category 6A, S/FTP	LSZH	Black	Argentina, Colombia, Chile/Peru/Brazil

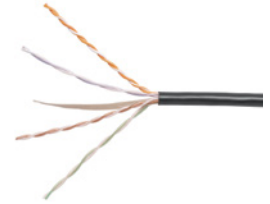


NOTE: Y- -X Length
 0- -1 1.0 meters
 0- -2 2.0 meters
 0- -3 3.0 meters

Material ID	Description	Rating	Availability
Category 6A shielded copper patch cords			
TCP-6ARFVB-XXYYF	Category 6A, S/FTP	CM	Mexico

NOTE: Replace XX with color: WT = White, YL = Yellow, RD = Red, GN = Green, BL = Blue, GY = Gray
 Replace YY for length:
 04 = 4 feet
 07 = 7 feet
 10 = 10 feet

Category 6 U/UTP products



Material ID	Description	Rating	AWG	Jacket Color	Length	Packaging	Availability
Category 6 U/UTP copper cables							
1427254-2	Category 6, 4 pair, UTP	CM	23 AWG	White	305 m/ 1000 ft	Reel-In-Box	Colombia, Chile/Peru
1427254-4	Category 6, 4 pair, UTP	CM	23 AWG	Gray	305 m/ 1000 ft	Reel-In-Box	Colombia, Chile/Peru
1427254-6	Category 6, 4 pair, UTP	CM	23 AWG	Blue	305 m/ 1000 ft	Reel-In-Box	Colombia, Chile/Peru
x-1427071-2	Category 6, 4 pair, UTP	CM	24 AWG	White	305 m/ 1000 ft	Reel-In-Box	Argentina, Colombia, Chile/Peru, Brazil
x-1427071-4	Category 6, 4 pair, UTP	CM	24 AWG	Gray	305 m/ 1000 ft	Reel-In-Box	Argentina, Colombia, Chile/Peru, Brazil
x-1427071-6	Category 6, 4 pair, UTP	CM	24 AWG	Blue	305 m/ 1000 ft	Reel-In-Box	Argentina, Colombia, Chile/Peru, Brazil
6-1427200-2	Category 6, 4 pair, UTP	CMR	23 AWG	White	305 m/ 1000 ft	Reel-In-Box	Colombia, Chile/Peru
6-1427200-4	Category 6, 4 pair, UTP	CMR	23 AWG	Gray	305 m/ 1000 ft	Reel-In-Box	Colombia, Chile/Peru
6-1427200-6	Category 6, 4 pair, UTP	CMR	23 AWG	Blue	305 m/ 1000 ft	Reel-In-Box	Colombia, Chile/Peru
2-1427215-2	Category 6, 4 pair, UTP	LSZH	23 AWG	White	305 m/ 1000 ft	Reel-In-Box	Colombia, Chile/Peru
2-1427215-4	Category 6, 4 pair, UTP	LSZH	23 AWG	Gray	305 m/ 1000 ft	Reel-In-Box	Colombia, Chile/Peru
2-1427215-6	Category 6, 4 pair, UTP	LSZH	23 AWG	Blue	305 m/ 1000 ft	Reel-In-Box	Colombia, Chile/Peru
1427070-2	Category 6, 4 pair, UTP	LSZH	24 AWG	White	305 m/ 1000 ft	Reel-In-Box	Argentina, Colombia, Chile/Peru, Brazil
1427070-4	Category 6, 4 pair, UTP	LSZH	24 AWG	Gray	305 m/ 1000 ft	Reel-In-Box	Argentina, Colombia, Chile/Peru, Brazil
1427070-6	Category 6, 4 pair, UTP	LSZH	24 AWG	Blue	305 m/ 1000 ft	Reel-In-Box	Argentina, Colombia, Chile/Peru, Brazil
1859345-2	Category 6, 4 pair, UTP	LSFRZH	23 AWG	White	305 m/ 1000 ft	Reel-In-Box	Argentina, Colombia, Chile/Peru
2171015-2	610 Series, Category 6, 4 pair, UTP	CMR	23 AWG	Blue	305 m/ 1000 ft	Reel-In-Box	Mexico
2171015-5	610 Series, Category 6, 4 pair, UTP	CMR	23 AWG	Gray	305 m/ 1000 ft	Reel-In-Box	Mexico
219560-2	610 Series, Category 6, 4 pair, UTP	CMR	23 AWG	White	305 m/ 1000 ft	Reel-In-Box	Mexico
219560-4	610 Series, Category 6, 4 pair, UTP	CMR	23 AWG	Gray	305 m/ 1000 ft	Reel-In-Box	Mexico
219560-6	610 Series, Category 6, 4 pair, UTP	CMR	23 AWG	Blue	305 m/ 1000 ft	Reel-In-Box	Mexico
219560-1	610 Series, Category 6, 4 pair, UTP	CMR	23 AWG	White	305 m/ 1000 ft	Reel-In-Box	Mexico
219560-3	610 Series, Category 6, 4 pair, UTP	CMR	23 AWG	Gray	305 m/ 1000 ft	Reel-In-Box	Mexico
5-219560-6	610 Series, Category 6, 4 pair, UTP	CMR	23 AWG	Blue	305 m/ 1000 ft	Reel-In-Box	Mexico
5-219560-4	610 Series, Category 6, 4 pair, UTP	CMR	23 AWG	White	305 m/ 1000 ft	Reel-In-Box	Mexico

Material ID	Description
Category 6 U/UTP patch panels	
1375014-2	RJ45 patch panel, SL series, modular standard, Category 6 , loaded, 24-port (Includes jacks)
1375015-2	RJ45 patch panel, SL series, modular standard, Category 6 , unshielded, loaded, 48-port (Includes jacks)
1324314	Patch panel, dynamic angle, Category 6, distribution module, 1U, 24-port
1324315	Patch panel, dynamic angle, Category 6, distribution module, 2U, 48-port



Category 6 U/UTP products



Material ID	Description	Color
Category 6 U/UTP jacks		
SL-Series opening without dust cover (All sub-regions)		
1375055-1	Category 6 U/UTP jack, SL	Almond
1375055-2	Category 6 U/UTP jack, SL	Black
1375055-4	Category 6 U/UTP jack, SL	Gray
1375055-5	Category 6 U/UTP jack, SL	Orange
1375055-6	Category 6 U/UTP jack, SL	Blue
1375055-7	Category 6 U/UTP jack, SL	Red
1375055-8	Category 6 U/UTP jack, SL	Yellow
1375055-9	Category 6 U/UTP jack, SL	Green
1-1375055-0	Category 6 U/UTP jack, SL	Violet
1-1375055-1	Category 6 U/UTP jack, SL	Electrical Ivory
1-1375055-3	Category 6 U/UTP jack, SL	Alpine White
SL-Series opening with dust cover (All sub-regions)		
1375187-1	Category 6 U/UTP jack, SL, with dust cover	Almond
1375187-2	Category 6 U/UTP jack, SL, with dust cover	Black
1375187-4	Category 6 U/UTP jack, SL, with dust cover	Gray
1375187-5	Category 6 U/UTP jack, SL, with dust cover	Orange
1375187-6	Category 6 U/UTP jack, SL, with dust cover	Blue
1375187-7	Category 6 U/UTP jack, SL, with dust cover	Red
1375187-8	Category 6 U/UTP jack, SL, with dust cover	Yellow
1375187-9	Category 6 U/UTP jack, SL, with dust cover	Green
1-1375187-0	Category 6 U/UTP jack, SL, with dust cover	Violet
1-1375187-1	Category 6 U/UTP jack, SL, with dust cover	Electrical Ivory
1-1375187-3	Category 6 U/UTP jack, SL, with dust cover	Alpine White
Keystone opening (Colombia only)		
2291216-1	Category 6 U/UTP jack, keystone	Almond
2291216-2	Category 6 U/UTP jack, keystone	Black
2291216-4	Category 6 U/UTP jack, keystone	Gray
2291216-5	Category 6 U/UTP jack, keystone	Orange
2291216-6	Category 6 U/UTP jack, keystone	Blue
2291216-7	Category 6 U/UTP jack, keystone	Red
2291216-8	Category 6 U/UTP jack, keystone	Yellow
2291216-9	Category 6 U/UTP jack, keystone	Green
1-2291216-0	Category 6 U/UTP jack, keystone	Violet
1-2291216-1	Category 6 U/UTP jack, keystone	Electrical Ivory
1-2291216-3	Category 6 U/UTP jack, keystone	Alpine White

Category 6 U/UTP products



Material ID	Description	Rating	Color	Availability
Category 6 U/UTP patch cords - CM-rated				
Y-1859250-X	Category 6, U/UTP	CM	White	Argentina, Colombia, Chile/Peru
Y-1859247-X	Category 6, U/UTP	CM	Blue	Argentina, Colombia, Chile/Peru
Y-1859246-X	Category 6, U/UTP	CM	Gray	Argentina, Colombia, Chile/Peru
Y-1859248-X	Category 6, U/UTP	CM	Green	Argentina, Colombia, Chile/Peru
Y-1859245-X	Category 6, U/UTP	CM	Orange	Argentina, Colombia, Chile/Peru
Y-1859249-X	Category 6, U/UTP	CM	Red	Argentina, Colombia, Chile/Peru
Y-1859251-X	Category 6, U/UTP	CM	Yellow	Argentina, Colombia, Chile/Peru
Y-1859252-X	Category 6, U/UTP	CM	Black	Argentina, Colombia, Chile/Peru
Y-1989795-X	Category 6, U/UTP	CM	White	Brazil
Y-1989798-X	Category 6, U/UTP	CM	Blue	Brazil
Y-1989796-X	Category 6, U/UTP	CM	Gray	Brazil
Y-1989799-X	Category 6, U/UTP	CM	Green	Brazil
Y-1989797-X	Category 6, U/UTP	CM	Red	Brazil
Y-1989800-X	Category 6, U/UTP	CM	Yellow	Brazil
Y-1989801-X	Category 6, U/UTP	CM	Black	Brazil
Y-1859011-X	Category 6, U/UTP	CM	White	Colombia
Y-1859008-X	Category 6, U/UTP	CM	Blue	Colombia
Y-1859007-X	Category 6, U/UTP	CM	Gray	Colombia
Y-1859009-X	Category 6, U/UTP	CM	Green	Colombia
Y-1859013-X	Category 6, U/UTP	CM	Orange	Colombia
Y-1859010-X	Category 6, U/UTP	CM	Red	Colombia
Y-1859012-X	Category 6, U/UTP	CM	Yellow	Colombia
Y-1859006-X	Category 6, U/UTP	CM	Black	Colombia

NOTE: Y- -X Length
 0- -2 2 feet
 0- -4 4 feet
 0- -6 6 feet
 0- -8 8 feet
 1- -0 10 feet

Material ID	Description	Rating	Availability
Category 6A F/UTP shielded patch cords			
TCP-6RUVB-XXYYF	Category 6A, unshielded	CM	Mexico

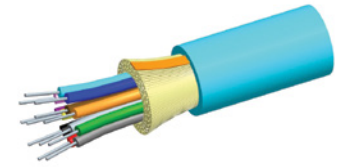
NOTE: Replace XX with color: WT = White, YL = Yellow, RD = Red, GN = Green, BL = Blue, GY = Gray
 Replace YY for length: 04 = 4 feet
 07 = 7 feet
 10 = 10 feet

Category 6 U/UTP products

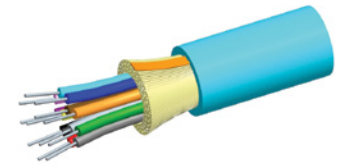


Material ID	Description (jacket/ boot)	Rating	Color	Availability
Category 6 U/UTP unshielded patch cords - LSZH				
Y-1859280-X	Category 6, U/UTP	LSZH	White	Chile/Peru
Y-1859277-X	Category 6, U/UTP	LSZH	Blue	Chile/Peru
Y-1859275-X	Category 6, U/UTP	LSZH	Gray	Chile/Peru
Y-1859278-X	Category 6, U/UTP	LSZH	Green	Chile/Peru
Y-1859276-X	Category 6, U/UTP	LSZH	Orange	Chile/Peru
Y-1859279-X	Category 6, U/UTP	LSZH	Red	Chile/Peru
Y-1859281-X	Category 6, U/UTP	LSZH	Yellow	Chile/Peru
Y-1859282-X	Category 6, U/UTP	LSZH	Black	Chile/Peru
Y-1711091-X	Category 6, U/UTP	LSZH	White	Argentina, Brazil
Y-1711094-X	Category 6, U/UTP	LSZH	Blue	Argentina, Brazil
Y-1711093-X	Category 6, U/UTP	LSZH	Gray	Argentina, Brazil
Y-1711095-X	Category 6, U/UTP	LSZH	Green	Argentina, Brazil
Y-1711098-X	Category 6, U/UTP	LSZH	Orange	Argentina, Brazil
Y-1711096-X	Category 6, U/UTP	LSZH	Red	Argentina, Brazil
Y-1711097-X	Category 6, U/UTP	LSZH	Yellow	Argentina, Brazil
Y-1711092-X	Category 6, U/UTP	LSZH	Black	Argentina, Brazil

NOTE: Y- -X Length
 1- -1 0.5 meters
 0- -1 1.0 meters
 0- -2 2.0 meters
 0- -3 3.0 meters
 0- -5 5.0 meters



Material ID	Description	Environment	Fiber type	Fiber Count	Availability
Fiber optic cables					
2-599144-4	Internal/external office distribution cable 4F OS2, yellow, LSZH	Indoor/outdoor LSZH	OS2	4F	Argentina, Colombia, Chile/Peru
2-599145-4	Internal/external office distribution cable 6F OS2, yellow, LSZH	Indoor/outdoor LSZH	OS2	6F	Argentina, Colombia, Chile/Peru
2-599146-4	Internal/external office distribution cable 8F OS2, yellow, LSZH	Indoor/outdoor LSZH	OS2	8F	Argentina, Colombia, Chile/Peru
2-599148-4	Internal/external office distribution cable 12F OS2, yellow, LSZH	Indoor/outdoor LSZH	OS2	12F	Argentina, Colombia, Chile/Peru
2-1716029-4	Internal/external office distribution cable 24F OS2, yellow, LSZH	Indoor/outdoor LSZH	OS2	24F	Argentina, Colombia, Chile/Peru
2-599144-3	Internal/external office distribution cable 4F OM3, aqua, LSZH	Indoor/outdoor LSZH	OM3	4F	Argentina, Colombia, Chile/Peru
2-599145-3	Internal/external office distribution cable 6F OM3, aqua, LSZH	Indoor/outdoor LSZH	OM3	6F	Argentina, Colombia, Chile/Peru
2-599146-3	Internal/external office distribution cable 8F OM3, aqua, LSZH	Indoor/outdoor LSZH	OM3	8F	Argentina, Colombia, Chile/Peru
2-599148-3	Internal/external office distribution cable 12F OM3, aqua, LSZH	Indoor/outdoor LSZH	OM3	12F	Argentina, Colombia, Chile/Peru
2-1716029-3	Internal/external office distribution cable 24F OM3, aqua, LSZH	Indoor/outdoor LSZH	OM3	24F	Argentina, Colombia, Chile/Peru
2-599144-2	Internal/external office distribution cable 4F OM4, aqua, LSZH	Indoor/outdoor LSZH	OM4	4F	Argentina, Colombia, Chile/Peru
2-599145-2	Internal/external office distribution cable 6F OM4, aqua, LSZH	Indoor/outdoor LSZH	OM4	6F	Argentina, Colombia, Chile/Peru
2-599146-2	Internal/external office distribution cable 8F OM4, aqua, LSZH	Indoor/outdoor LSZH	OM4	8F	Argentina, Colombia, Chile/Peru
2-599148-2	Internal/external office distribution cable 12F OM4, aqua, LSZH	Indoor/outdoor LSZH	OM4	12F	Argentina, Colombia, Chile/Peru
2-1716029-2	Internal/external office distribution cable 24F OM4, aqua, LSZH	Indoor/outdoor LSZH	OM4	24F	Argentina, Colombia, Chile/Peru
2-599682-4	External loose tube cable with corrugated steel armour - rodent resistant 6F OS2	Outdoor	OS2	6F	Argentina, Colombia, Chile/Peru
2-599692-4	External loose tube cable with corrugated steel armour - rodent resistant 8F OS2	Outdoor	OS2	8F	Argentina, Colombia, Chile/Peru
2-599683-4	External loose tube cable with corrugated steel armour - rodent resistant 12F OS2	Outdoor	OS2	12F	Argentina, Colombia, Chile/Peru
2-599690-4	External loose tube cable with corrugated steel armour - rodent resistant 24F OS2	Outdoor	OS2	24F	Argentina, Colombia, Chile/Peru
2-599681-3	External loose tube cable with corrugated steel armour - rodent resistant 4F OM3	Outdoor	OM3	4F	Argentina, Colombia, Chile/Peru
2-599682-3	External loose tube cable with corrugated steel armour - rodent resistant 6F OM3	Outdoor	OM3	6F	Argentina, Colombia, Chile/Peru
2-599692-3	External loose tube cable with corrugated steel armour - rodent resistant 8F OM3	Outdoor	OM3	8F	Argentina, Colombia, Chile/Peru
2-599683-3	External loose tube cable with corrugated steel armour - rodent resistant 12F OM3	Outdoor	OM3	12F	Argentina, Colombia, Chile/Peru
2-599690-3	External loose tube cable with corrugated steel armour - rodent resistant 24F OM3	Outdoor	OM3	24F	Argentina, Colombia, Chile/Peru



Material ID	Description	Environment	Fiber type	Fiber Count	Availability
Fiber optic cables					
2-599681-2	External loose tube cable with corrugated steel armour - rodent resistant 4F OM4	Outdoor	OM4	4F	Argentina, Colombia, Chile/Peru
2-599682-2	External loose tube cable with corrugated steel armour - rodent resistant 6F OM4	Outdoor	OM4	6F	Argentina, Colombia, Chile/Peru
2-599692-2	External loose tube cable with corrugated steel armour - rodent resistant 8F OM4	Outdoor	OM4	8F	Argentina, Colombia, Chile/Peru
2-599683-2	External loose tube cable with corrugated steel armour - rodent resistant 12F OM4	Outdoor	OM4	12F	Argentina, Colombia, Chile/Peru
2-599690-2	External loose tube cable with corrugated steel armour - rodent resistant 24F OM4	Outdoor	OM4	24F	Argentina, Colombia, Chile/Peru
2-599161-4	Internal/external loose tube cable 6F OS2	Indoor/outdoor	OS2	6F	Argentina, Colombia, Chile/Peru
2-599162-4	Internal/external loose tube cable 8F OS2	Indoor/outdoor	OS2	8F	Argentina, Colombia, Chile/Peru
2-599164-4	Internal/external loose tube cable 12F OS2	Indoor/outdoor	OS2	12F	Argentina, Colombia, Chile/Peru
2-599167-4	Internal/external loose tube cable 24F OS2	Indoor/outdoor	OS2	24F	Argentina, Colombia, Chile/Peru
2-599160-3	Internal/external loose tube cable 4F OM3	Indoor/outdoor	OM3	4F	Argentina, Colombia, Chile/Peru
2-599161-3	Internal/external loose tube cable 6F OM3	Indoor/outdoor	OM3	6F	Argentina, Colombia, Chile/Peru
2-599162-3	Internal/external loose tube cable 8F OM3	Indoor/outdoor	OM3	8F	Argentina, Colombia, Chile/Peru
2-599164-3	Internal/external loose tube cable 12F OM3	Indoor/outdoor	OM3	12F	Argentina, Colombia, Chile/Peru
2-599167-3	Internal/external loose tube cable 24F OM3	Indoor/outdoor	OM3	24F	Argentina, Colombia, Chile/Peru
2-599160-2	Internal/external loose tube cable 4F OM4	Indoor/outdoor	OM4	4F	Argentina, Colombia, Chile/Peru
2-599161-2	Internal/external loose tube cable 6F OM4	Indoor/outdoor	OM4	6F	Argentina, Colombia, Chile/Peru
2-599162-2	Internal/external loose tube cable 8F OM4	Indoor/outdoor	OM4	8F	Argentina, Colombia, Chile/Peru
2-599164-2	Internal/external loose tube cable 12F OM4	Indoor/outdoor	OM4	12F	Argentina, Colombia, Chile/Peru
2-599167-2	Internal/external loose tube cable 24F OM4	Indoor/outdoor	OM4	24F	Argentina, Colombia, Chile/Peru
1989761-4	Distribution internal/external SMF 4FO	Indoor/outdoor	OS2	4F	Brazil
1989761-6	Distribution internal/external SMF 6FO	Indoor/outdoor	OS2	6F	Brazil
1-1989761-2	Distribution internal/external SMF 12FO	Indoor/outdoor	OS2	12F	Brazil
1989810-4	Distribution internal/external OM3 4FO	Indoor/outdoor	OM3	4F	Brazil
1989810-6	Distribution internal/external OM3 6FO	Indoor/outdoor	OM3	6F	Brazil
1-1989810-2	Distribution internal/external OM3 12FO	Indoor/outdoor	OM3	12F	Brazil
1989811-4	Distribution internal/external OM4 4FO	Indoor/outdoor	OM4	4F	Brazil
1989811-6	Distribution internal/external OM4 6FO	Indoor/outdoor	OM4	6F	Brazil
1-1989811-2	Distribution internal/external OM4 12FO	Indoor/outdoor	OM4	12F	Brazil

Material ID	Description	Environment	Fiber type	Fiber Count	Availability
Fiber optic cables					
1989755-4	Internal/external dielectric CLT SMF 4FO	Indoor/outdoor	SMF	4F	Brazil
1989755-6	Internal/external dielectric CLT SMF 6FO	Indoor/outdoor	SMF	6F	Brazil
1-1989755-2	Internal/external dielectric CLT SMF 12FO	Indoor/outdoor	SMF	12F	Brazil
1989808-4	Internal/external dielectric CLT OM3 4FO	Indoor/outdoor	OM3	4F	Brazil
1989808-6	Internal/external dielectric CLT OM3 6FO	Indoor/outdoor	OM3	6F	Brazil
1-1989808-2	Internal/external dielectric CLT OM3 12FO	Indoor/outdoor	OM3	12F	Brazil
1989809-4	Internal/external dielectric CLT OM4 4FO	Indoor/outdoor	OM4	4F	Brazil
1989809-6	Internal/external dielectric CLT OM4 6FO	Indoor/outdoor	OM4	6F	Brazil
1-1989809-2	Internal/external dielectric CLT OM4 12FO	Indoor/outdoor	OM4	12F	Brazil
1989758-6	Steel armored SMF 6FO	Outdoor	SMF	6F	Brazil
1-1989758-2	Steel armored SMF 12FO	Outdoor	SMF	12F	Brazil

Material ID	Product Code	Description	Environment	Fiber type	Fiber Count	Availability
Fiber optic cables - Mexico only						
700208143	R-006-DS-5L-FSUAQ	LazrSPEED® 300 Riser Distribution Cable, 6 fibers	Riser Indoor	OM3	6F	Mexico **
700208150	R-012-DS-5L-FSUAQ	LazrSPEED® 300 Riser Distribution Cable, 12 fibers	Riser Indoor	OM3	12F	Mexico **
760018556	R-024-DS-5L-FSUAQ	LazrSPEED® 300 Riser Distribution Cable, 24 fibers single-unit	Riser Indoor	OM3	24F	Mexico **
760012104	R-006-DS-5K-FSUAQ	LazrSPEED® 550 Riser Distribution Cable, 6 fibers	Riser Indoor	OM4	6F	Mexico **
760012112	R-012-DS-5K-FSUAQ	LazrSPEED® 550 Riser Distribution Cable, 12 fibers	Riser Indoor	OM4	12F	Mexico **
760018564	R-024-DS-5K-FSUAQ	LazrSPEED® 550 Riser Distribution Cable, 24 fibers single-unit	Riser Indoor	OM4	24F	Mexico **
760004424	R-006-DS-8W-FSUYL	TeraSPEED® Riser Distribution Cable, 6 fibers	Riser Indoor	SM	6F	Mexico **
760004440	R-012-DS-8W-FSUYL	TeraSPEED® Riser Distribution Cable, 12 fibers	Riser Indoor	SM	12F	Mexico **
760018515	R-024-DS-8W-FSUYL	TeraSPEED® Riser Distribution Cable, 24 fibers single-unit	Riser Indoor	SM	24F	Mexico **
760112599	R-006-LN-5L-F06BK/25D/LTS	LazrSPEED® 300 Indoor/Outdoor, Light Duty, Single Jacket, Riser Rated, Gel-Free, All-Dielectric Outdoor Stranded Loose Tube Cable 6 fibers	Riser Indoor/ Outdoor	OM3	6F	Mexico **
760112607	R-012-LN-5L-F12BK/25D/LTS	LazrSPEED® 300 Indoor/Outdoor, Light Duty, Single Jacket, Riser Rated, Gel-Free, All-Dielectric Outdoor Stranded Loose Tube Cable 12 fibers	Riser Indoor/ Outdoor	OM3	12F	Mexico **
760112615	R-024-LN-5L-F12BK/25D/LTS	LazrSPEED® 300 Indoor/Outdoor, Light Duty, Single Jacket, Riser Rated, Gel-Free, All-Dielectric Outdoor Stranded Loose Tube Cable 24 fibers	Riser Indoor/ Outdoor	OM3	24F	Mexico **
760112656	R-006-LN-5K-F06BK/25D/LTS	LazrSPEED® 550 Indoor/Outdoor, Light Duty, Single Jacket, Riser Rated, Gel-Free, All-Dielectric Outdoor Stranded Loose Tube Cable 6 fibers	Riser Indoor/ Outdoor	OM4	6F	Mexico **
760112664	R-012-LN-5K-F12BK/25D/LTS	LazrSPEED® 550 Indoor/Outdoor, Light Duty, Single Jacket, Riser Rated, Gel-Free, All-Dielectric Outdoor Stranded Loose Tube Cable 12 fibers	Riser Indoor/ Outdoor	OM4	12F	Mexico **
760112672	R-024-LN-5K-F12BK/25D/LTS	LazrSPEED® 550 Indoor/Outdoor, Light Duty, Single Jacket, Riser Rated, Gel-Free, All-Dielectric Outdoor Stranded Loose Tube Cable 24 fibers	Riser Indoor/ Outdoor	OM4	24F	Mexico **
760112417	R-006-LN-8W-F06BK/25D/LTS	TeraSPEED® Indoor/Outdoor, Light Duty, Single Jacket, Riser Rated, Gel-Free, All-Dielectric Outdoor Stranded Loose Tube Cable 6 fibers	Riser Indoor/ Outdoor	SM	6F	Mexico **

Material ID	Product Code	Description	Environment	Fiber type	Fiber Count	Availability
Fiber optic cables - Mexico only						
760112425	R-012-LN-8W-F12BK/25D/LTS	TeraSPEED® Indoor/Outdoor, Light Duty, Single Jacket, Riser Rated, Gel-Free, All-Dielectric Outdoor Stranded Loose Tube Cable 12 fibers	Riser Indoor/Outdoor	SM	12F	Mexico **
760112433	R-024-LN-8W-F12BK/25D/LTS	TeraSPEED® Indoor/Outdoor, Light Duty, Single Jacket, Riser Rated, Gel-Free, All-Dielectric Outdoor Stranded Loose Tube Cable 24 fibers	Riser Indoor/Outdoor	SM	24F	Mexico **
760178004	O-006-LN-5L-F06NS/25T	LazrSPEED® 300 Single Jacket All-Dielectric, Gel-Filled, Outdoor Stranded Loose Tube Cable 6 fibers	Outdoor	OM3	6F	Mexico *
760178012	O-012-LN-5L-F12NS/25T	LazrSPEED® 300 Single Jacket All-Dielectric, Gel-Filled, Outdoor Stranded Loose Tube Cable 12 fibers	Outdoor	OM3	12F	Mexico *
760172718	O-024-LN-5L-F12NS/25T	LazrSPEED® 300 Single Jacket All-Dielectric, Gel-Filled, Outdoor Stranded Loose Tube Cable 24 fibers	Outdoor	OM3	24F	Mexico *
760177972	O-006-LN-5K-F06NS/25T	LazrSPEED® 550 Single Jacket All-Dielectric, Gel-Filled, Outdoor Stranded Loose Tube Cable 6 fibers	Outdoor	OM4	6F	Mexico *
760177980	O-012-LN-5K-F12NS/25T	LazrSPEED® 550 Single Jacket All-Dielectric, Gel-Filled, Outdoor Stranded Loose Tube Cable 12 fibers	Outdoor	OM4	12F	Mexico *
760177998	O-024-LN-5K-F12NS/25T	LazrSPEED® 550 Single Jacket All-Dielectric, Gel-Filled, Outdoor Stranded Loose Tube Cable 24 fibers	Outdoor	OM4	24F	Mexico *
760178038	O-006-LN-8W-F06NS/25T	TeraSpeed® Single Jacket All-Dielectric, Gel-Filled, Outdoor Stranded Loose Tube Cable 6 fibers	Outdoor	SM	6F	Mexico *
760178046	O-012-LN-8W-F12NS/25T	TeraSpeed® Single Jacket All-Dielectric, Gel-Filled, Outdoor Stranded Loose Tube Cable 12 fibers	Outdoor	SM	12F	Mexico *
760172734	O-024-LN-8W-F12NS/25T	TeraSpeed® Single Jacket All-Dielectric, Gel-Filled, Outdoor Stranded Loose Tube Cable 24 fibers	Outdoor	SM	24F	Mexico *
760177832	O-006-LA-5L-F06NS/25T	LazrSPEED® 300 Single Jacket/Single Armor, Gel-Filled, Outdoor Stranded Loose Tube Cable 6 fibers	Outdoor	OM3	6F	Mexico *
760177840	O-012-LA-5L-F12NS/25T	LazrSPEED® 300 Single Jacket/Single Armor, Gel-Filled, Outdoor Stranded Loose Tube Cable 12 fibers	Outdoor	OM3	12F	Mexico *
760177857	O-024-LA-5L-F12NS/25T	LazrSPEED® 300 Single Jacket/Single Armor, Gel-Filled, Outdoor Stranded Loose Tube Cable 24 fibers	Outdoor	OM3	24F	Mexico *
760177790	O-006-LA-5K-F06NS/25T	LazrSPEED® 550 Single Jacket/Single Armor, Gel-Filled, Outdoor Stranded Loose Tube Cable 6 fibers	Outdoor	OM4	6F	Mexico *
760177808	O-012-LA-5K-F12NS/25T	LazrSPEED® 550 Single Jacket/Single Armor, Gel-Filled, Outdoor Stranded Loose Tube Cable 12 fibers	Outdoor	OM4	12F	Mexico *
760177816	O-024-LA-5K-F12NS/25T	LazrSPEED® 550 Single Jacket/Single Armor, Gel-Filled, Outdoor Stranded Loose Tube Cable 24 fibers	Outdoor	OM4	24F	Mexico *
760177907	O-006-LA-8W-F06NS/25T	TeraSPEED® Single Jacket/Single Armor, Gel-Filled, Outdoor Stranded Loose Tube Cable 6 fibers	Outdoor	SM	6F	Mexico *
760177915	O-012-LA-8W-F12NS/25T	TeraSPEED® Single Jacket/Single Armor, Gel-Filled, Outdoor Stranded Loose Tube Cable 12 fibers	Outdoor	SM	12F	Mexico *
760177923	O-024-LA-8W-F12NS/25T	TeraSPEED® Single Jacket/Single Armor, Gel-Filled, Outdoor Stranded Loose Tube Cable 24 fibers	Outdoor	SM	24F	Mexico *

NOTE: ** Also Plenum Option available - Also available in other fiber counts
 * Also available in other fiber counts



Material ID	Description	Rack Units	Availability
1000-type panel and wall enclosures			
1348876-4	Fiber optic termination panel, 1U, 19 in, unloaded, black, accepts 3 adaptor plates	1U	Argentina, Colombia, Chile/Peru
1334940	RMG-1000-000B: 1RU panel, empty	1U	Mexico
1406236	RMG-2000-000B: 2RU panel, empty	2U	Mexico
1674927	RMG-4000-000B: 4RU panel, empty	4U	Mexico
1342395	RMG fiber optic splice tray kit for 24 heat shrink fusion	N/A	Mexico
760231449	Standard density 1U sliding shelf	1U	Argentina, Colombia, Chile/Peru, Brazil, Mexico
1989954-2	Optical distributor internal (Snap in)	N/A	Brazil
4-1657014-4	1U enclosure, accepts 3 adaptor plates	1U	Argentina
4-1657014-9	Sliding 1U enclosure, accepts 3 adaptor plates	1U	Argentina
429567-000	FOSC™ fiber optic splice tray kit for 24 fibers	N/A	Argentina, Colombia, Chile/Peru, Brazil



Material ID	Product number	Description
1000-type adapter panels		
1374463-5	RMG-12ADPQ2	Adapter panel, black, 1000-Type (Snap in), with 6 LC duplex adapters, aqua
1435516-5	RMG-24ADPQ4	Adapter panel, black, 1000-Type (Snap in), with 12 LC duplex adapters, aqua
1374463-1	RMG-12ADPQ5	Adapter panel, black, 1000-Type (Snap in), with 6 LC duplex adapters, blue
1435516-1	RMG-24ADPQ8	Adapter panel, black, 1000-Type (Snap in), with 12 LC duplex adapters, blue
559558-6	RMG-06ADPC2	Adapter panel, black, 1000-Type (Snap in), with 3 SC duplex adapters, aqua
559596-6	RMG-12ADPC4	Adapter panel, black, 1000-Type (Snap in), with 6 SC duplex adapters, aqua
559558-2	RMG-06ADPC7	Adapter panel, black, 1000-Type (Snap in), with 3 SC duplex adapters, blue
559596-2	RMG-12ADPC8	Adapter panel, black, 1000-Type (Snap in), with 6 SC duplex adapters, blue
559558-7	RMG-06ADPA1	Adapter panel, black, 1000-Type (Snap in), with 3 SC duplex adapters, green
559596-3	RMG-12ADPA1	Adapter panel, black, 1000-Type (Snap in), with 6 SC duplex adapters, green
559523-1	N/A	Adapter panel, black, 1000-Type (Snap in), blank

Material ID	Description	Availability
PAT-LCLC-abcdeef	Fiber patch cord LC-LC ***	Mexico
PAT-LCSC-abcdeef	Fiber patch cord LC-SC ***	Mexico
PAT-SCSC-abcdeef	Fiber patch cord SC-SC ***	Mexico



NOTE: ***Follow CTO PAT configuration scheme 300001724005, where

a : (R= Riser or P=Plenum)

b: (3 = OM3, 4 = OM4, 5 = OS2)

c: (0= standard)

d: (B= 1.8mm zipcord, C= 2.0 mm zipcord)

eee = length from 000 to 999 feet

f: (F=Feet, M = Meters)

Example: PAT-LCLC-R30B001M is an LC-LC duplex cord, OM3, 1.8mm zipcord, 1 meter length

Material ID	Description	Fiber	Availability
x-6536969-y	FOMM50 LEAD OM3 1.8MZ LC-LC duplex	OM3	Argentina, Colombia, Chile/Peru/Brazil
x-2160046-y	FOMM50 LEAD OM4 1.8MZ LC-LC duplex	OM4	Argentina, Colombia, Chile/Peru/Brazil
x-6536501-y	FOSM LEAD 1.8MZ LC/PC-LC/PC duplex		Argentina, Colombia, Chile/Peru/Brazil
x-6536967-y	FOMM50 LEAD OM3 1.8MZ LC/DPX-SC/duplex	OM3	Argentina, Colombia, Chile/Peru/Brazil
x-6536508-y	FOSM LEAD 1.8MZ LC/PC-SC/PC duplex		Argentina, Colombia, Chile/Peru/Brazil

NOTE: Y- -X Length

0- -1 1.0 meter

0- -2 2.0 meters

0- -3 3.0 meters



Material ID	Description	Fiber	Connector	Availability
Fiber optic pigtails				
5233582-2	Pigtail - SC/PC tuned; OS2; Strip: semi-tight; length: 2 m	OS2	SC/PC	Argentina, Colombia, Chile/Peru/Brazil
5233103-2	Pigtail - SC/APC; OS2; Strip: semi-tight; length: 2 m	OS2	SC/APC	Argentina, Colombia, Chile/Peru/Brazil
6536880-2	Pigtail - LC tuned; OS2; Strip: semi-tight; length: 2 m	OS2	LC	Argentina, Colombia, Chile/Peru/Brazil
6536966-2	Pigtail - LC; OM3 XG 10 Gb/s; Strip: semi-tight; length: 2 m	OM3	LC	Argentina, Colombia, Chile/Peru/Brazil
2160042-2	Pigtail - LC; OM4; Strip: semi-tight buffer; length: 2 m	OM4	LC	Argentina, Colombia, Chile/Peru/Brazil
PAT-LC00-0	LC Pigtail 0.9mm***		LC	Mexico

NOTE: ***Follow CTO PAT configuration scheme 300001724005

CommScope pushes the boundaries of communications technology with game-changing ideas and ground-breaking discoveries that spark profound human achievement.

We collaborate with our customers and partners to design, create and build the world's most advanced networks. It is our passion and commitment to identify the next opportunity and realize a better tomorrow. Discover more at commscope.com

COMMSCOPE®

commscope.com

Visit our website or contact your local CommScope representative for more information.

© 2018 CommScope, Inc. All rights reserved.

Unless otherwise noted, all trademarks identified by © or ™ are registered trademarks, respectively, of CommScope, Inc. This document is for planning purposes only and is not intended to modify or supplement any specifications or warranties relating to CommScope products or services. CommScope is committed to the highest standards of business integrity and environmental sustainability with a number of CommScope's facilities across the globe certified in accordance with international standards, including ISO 9001, TL 9000, and ISO 14001. Further information regarding CommScope's commitment can be found at www.commscope.com/About-Us/Corporate-Responsibility-and-Sustainability.

CO-112199.1-EN (11/18)