

USX6 and HX6 Microwave Antenna Introduction: New Product

CommScope announces the introduction of two new product families of microwave antennas. These antennas provide considerable improvements in performance over other equivalent products currently being deployed.

The USX6 range meets the ETSI class 4 and FCC category A radiation pattern envelope mask and, coupled with high cross polar discrimination (meets ETSI category 3) provides the highest performing microwave antenna in CommScope's product range – surpassing the historical benchmark UHX family.

The HX6 range meets the ETSI class 3 radiation pattern envelope mask with good cross polar discrimination and offers a substantial improvement over other basic shielded antennas.

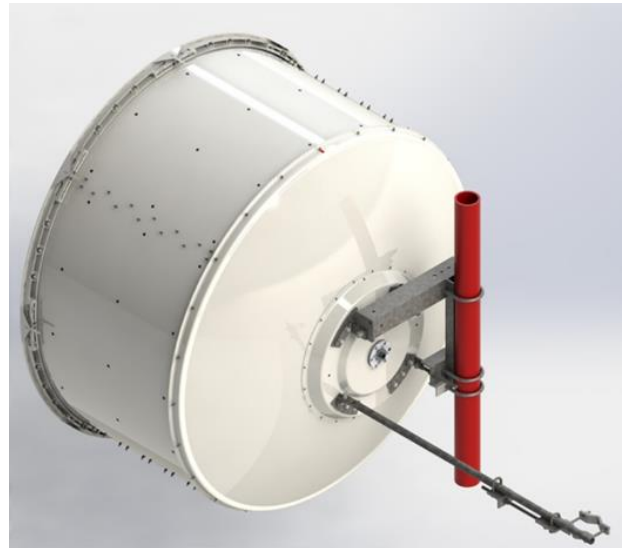
Initially released in the popular 6, 7 and 11GHz range, additional models covering further frequency bands will be added in the coming months.

Both antenna families offer

- High gain
- Excellent radiation pattern envelopes to allow use in frequency congested environments
- Dual polarized as standard, but supplied with a blanking plate to allow single polarized operation
- Wide range of metric and imperial output flange options
- 200km/h (125mph) survival wind speed, 180km/h (112mph) operational as standard.
- Robust "T-style" mount for ease and resilience of installation
- Single side strut supplied as standard with the ability to fit an optional additional strut if required
- High performance fabric radome to reduce wind loading and improve performance under icing
- Compact pack size to minimize transportation costs
- Upgrade kit to increase survival wind speed to 250km/h (available from late April 2018)

Detailed specifications can be found on eCatalog at the link provided.

http://www.commscope.com/catalog/antennas/product_narrow_antmicro.aspx?id=6



Ordering Information:

Operating Band	USX range	HX range	Flange
5.925 – 7.125 GHz	USX6-6W-4GR	HX6-6W-4GR	PDR70
	USX6-6W-6GR	HX6-6W-6GR	CPR137G
7.125 – 8.500 GHz	USX6-7W-2GR	HX6-7W-2GR	PBR84
	USX6-7W-3GR	HX6-7W-3GR	UBR84
	USX6-7W-4GR	HX6-7W-4GR	PDR84
	USX6-7W-6GR	HX6-7W-6GR	CPR112G
10.000 – 11.700 GHz	USX6-11W-2GR	HX6-11W-2GR	PBR100
	USX6-11W-3GR	HX6-11W-3GR	UBR100
	USX6-11W-4GR	HX6-11W-4GR	PDR100
	USX6-11W-6GR	HX6-11W-6GR	CPR90G

Timescales:

All models are available to order with immediate effect from CommScope facilities in N America and Europe

Support Information:

Please contact your CommScope representative for additional information.