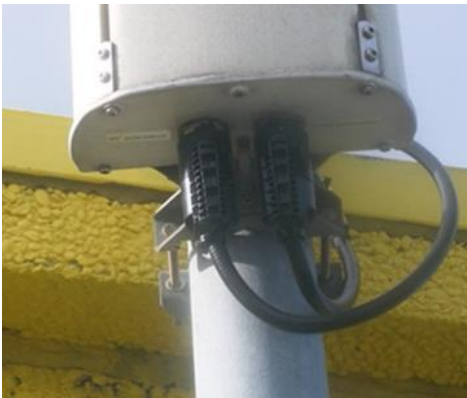


GSIC-XS closure for 4.3-10 connectors expands the GSIC Antenna closure product line: New Product



The GSIC Antenna product line is now enriched by the GSIC-XS, suited for sealing jumper-to-antenna 4.3-10 connectors. These gel sealed closures are a weatherproofing system for sealing jumper-to-antenna connectors. The housing contains an innovative gel material and provides an efficient moisture block.

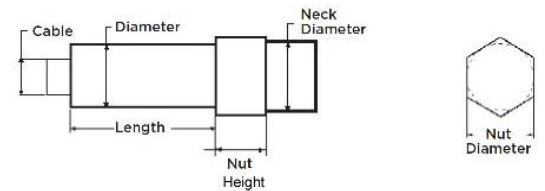
The ease of installation and the long term protection makes it a reliable and cost-effective sealing solution for outside plant connectors.

Features and Benefits

- Gel material provides an effective barrier against ingress of water and other contaminants - IP68 rating
- Sealing properties of the gel provide a reliable protection over a wide temperature range (-40°C/+ 70°C)
- Wraparound design eliminates the need to disconnect the connectors before installation
- Quick and easy to install: reduces the amount of time a technician is on the tower
- Easy Removable & Re-usable: tower time is reduced, no need to replace closure
- No tape, mastic or tools required: reduces cost of servicing coaxial connectors

Dimensions

| Product Description | Application | Cable | Neck DIA | Maximum connector dimensions | | | |
|---------------------|-------------------------------|---------|----------|------------------------------|----------|------------|---------|
| | | | | Length | Diameter | Nut Length | Nut DIA |
| GSIC-1/2-ANT-S | ½" Jumper to DIN connector | 13-16.5 | 26-28 | 60 | 26.6 | 12.5-16 | 32 |
| GSIC-1/2-ANT-L | ½" Jumper to DIN connector | 13-16.5 | 26-28 | 93.5 | 26 | 14-23.5 | 32 |
| GSIC-1/2-ANT-XS | ½" Jumper to 4.3-10 connector | 13-16.5 | 17-19 | 55 | 26.6 | 10-22 | 26 |



Ordering Information:

| Part Number | Description |
|-------------|---------------------------------|
| F58329-000 | GSIC-1/2-ANT-S-00-INT01 |
| D80635-000 | GSIC-1/2-ANT-L-00-INT01 |
| 760237460 | GSIC-1/2-ANT-XS-4.3.10-00-INT01 |

For additional information please contact your CommScope representative.