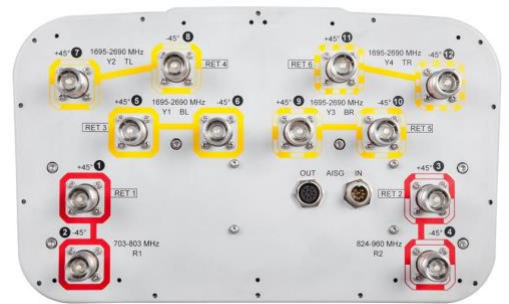


# 12-Port Diplexed Base Station Antenna: New Product

## *Caribbean and Latin America*

CommScope's 12-port wideband technology combined with its best in class internal diplexer technology enables wireless operators to install one antenna where multiples were previously needed. The JCV4-65B-R6 multiport wideband antennas support the major air-interface frequencies used in Latin America and the Caribbean — perfect for **network modernization**. Operators can reduce the number of antennas in their networks, lowering tower leasing costs while increasing speed to market capability.



This 65° beamwidth antenna with small profile width are **MIMO-ready** for LTE applications. They provide **4 low band system ports** (3GPP Bands 5, 8, 28) plus **8 high band system ports** (3GPP Bands 2, 3, 4, 7, 60) all in a **350 mm wide profile**. This narrow width antenna is optimized for high performance in capacity-sensitive, data-driven environments.

### Antenna Highlights

- For low bands, features 2 ports for 700 MHz APT and 2 ports to support 850 MHz and 960 MHz bands.
- For high bands, features 8 ports for bands 1800, 1900, 2100, 2200 and 2500–2600 MHz.
- Great for MIMO applications in all bands.
- Element diplexed technology reduces the size on the antenna and at the same time maintains independent downtilt control for both low and high band systems.
- Industry leading performance due to the antenna's excellent sector power ratio (SPR), which reduces cell overlap, minimizes the noise in the network, and **ensures high data throughput rates**.

### Ordering Information:

Please contact your CommScope representative or visit eCatalog at the link below for additional information.

[https://www.commscope.com/catalog/antennas/product\\_details.aspx?id=93923&q=JCV4&sayt=1](https://www.commscope.com/catalog/antennas/product_details.aspx?id=93923&q=JCV4&sayt=1)