

## USX8 and HX8 Microwave Antenna Introduction: New Product

CommScope announces the introduction of USX8 and HX8 microwave antennas. These offer higher gain and complement the popular USX6 and HX6 range already available.

The USX8 range meets the ETSI class 4 and FCC category A radiation pattern envelope masks and, coupled with high cross polar discrimination (meets ETSI category 3), provide the highest performing microwave antennas in CommScope's product range – surpassing the historical benchmark UHX family.

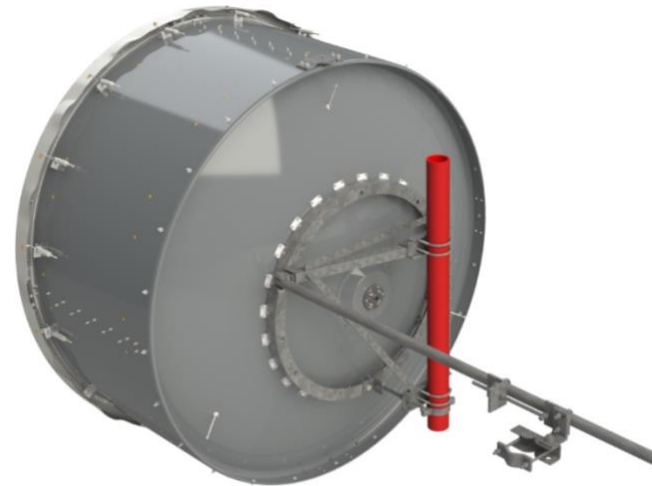
The HX8 range meets the ETSI class 3 radiation pattern envelope mask with good cross polar discrimination and offers a substantial improvement over other basic shielded antennas.

Covering all frequency bands between 3 and 15 GHz, these innovative antennas offer:

- Compact pack size to minimize transportation costs – with up to 10 fitting in a 40' shipping container
- High gain coupled with excellent radiation pattern envelopes to allow use in frequency congested environments
- Dual polarized as standard, but supplied with a blanking plate to allow single polarized operation
- Wide range of metric and imperial output flange options
- Single piece reflector to minimise installation time on site
- 200km/h (125mph) survival wind speed, 180km/h (112mph) operational as standard
- Field proven mount design
- Single side strut supplied as standard with the ability to fit multiple optional additional struts if required
- High performance fabric radome to reduce wind loading and improve performance under icing
- Upgrade kit to increase survival wind speed to 250km/h

Detailed specifications can be found on CommScope's electronic catalogue at the link provided.

[Point-to-Point \(PTP\) Microwave Antennas](#)



## Ordering Information

| Operating Band      | USX range    | HX range    | Flange  |
|---------------------|--------------|-------------|---------|
| 3.600 – 4.200 GHz   | USX8-3-4GF   | -           | PDR40   |
|                     | USX8-3-6GF   | -           | CPR229G |
| 4.400 – 5.000 GHz   | USX8-4-4GF   | HX8-4-4GF   | PDR48   |
|                     | USX8-4-6GF   | HX8-4-6GF   | CPR187G |
| 5.925 – 7.125 GHz   | USX8-6W-4GF  | HX8-6W-4GF  | PDR70   |
|                     | USX8-6W-6GF  | HX8-6W-6GF  | CPR137G |
| 7.125 – 8.500 GHz   | USX8-7W-2GF  | HX8-7W-2GF  | PBR84   |
|                     | USX8-7W-3GF  | HX8-7W-3GF  | UBR84   |
|                     | USX8-7W-4GF  | HX8-7W-4GF  | PDR84   |
|                     | USX8-7W-6GF  | HX8-7W-6GF  | CPR112G |
| 10.000 – 11.700 GHz | USX8-11W-2GF | HX8-11W-2GF | PBR100  |
|                     | USX8-11W-3GF | HX8-11W-3GF | UBR100  |
|                     | USX8-11W-4GF | HX8-11W-4GF | PDR100  |
|                     | USX8-11W-6GF | HX8-11W-6GF | CPR90G  |
| 12.200 – 13.250 GHz | USX8-13W-2GF | HX8-13W-2GF | PBR120  |
|                     | USX8-13W-3GF | HX8-13W-3GF | UBR120  |
| 14.400 – 15.350 GHz | USX8-15-2GF  | -           | PBR140  |
|                     | USX8-15-3GF  | -           | UBR140  |

**Timescales:**

USX8 and HX8 antennas are currently available to order with standard lead time.

**Support Information:**

Please contact your CommScope representative for additional information.