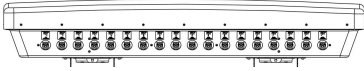


2x9NPA2010F



18-port multibeam antenna, 18x 1710–2170 MHz, 2x9 Beam Panel Antenna for Event Coverage. Two rows of beams spaced 8° in elevation. One set of beams 4° up (+45°) and one set of beams 4° down (-45°) and 5° in azimuth. Upper and lower beam sets displaced in azimuth by ± 2.5° from boresight.

Electrical Specifications

Frequency Band, MHz	1710–1920	1920–2170
Gain, dBi	25.0	27.0
Beamwidth, Horizontal, degrees	6	5
Beamwidth, Vertical, degrees	7.2	5.8
USLS (First Lobe), dB	18	18
Front-to-Back Ratio at 180°, dB	30	30
Isolation, Cross Polarization, dB	16	16
VSWR Return Loss, dB	1.43 15.0	1.43 15.0
PIM, 3rd Order, 2 x 20 W, dBc	-150	-150
Input Power per Port, maximum, watts	300	300
Polarization	Single Slant Polarization	Single Slant Polarization
Impedance	50 ohm	50 ohm

General Specifications

Operating Frequency Band	1710 – 2170 MHz
Antenna Type	Multibeam
Band	Single band
Performance Note	Outdoor usage

Mechanical Specifications

RF Connector Quantity, total	18
RF Connector Quantity, high band	18
RF Connector Interface	7-16 DIN Female
Color	Light gray
Grounding Type	RF connector inner conductor and body grounded to reflector and mounting bracket
Radome Material	ASA, UV stabilized
RF Connector Location	Bottom
Wind Loading, frontal	3222.0 N @ 150 km/h 724.3 lbf @ 150 km/h
Wind Loading, lateral	174.0 N @ 150 km/h 39.1 lbf @ 150 km/h
Wind Speed, maximum	160 km/h 99 mph

Dimensions

Length	1771.0 mm 69.7 in
--------	---------------------

2x9NPA2010F

Width	1486.0 mm 58.5 in
Depth	283.0 mm 11.1 in
Net Weight, without mounting kit	140.0 kg 308.6 lb

Packed Dimensions

Length	1998.0 mm 78.7 in
Width	1758.0 mm 69.2 in
Depth	640.0 mm 25.2 in
Shipping Weight	188.0 kg 414.5 lb

Regulatory Compliance/Certifications

Agency

RoHS 2011/65/EU
ISO 9001:2015
China RoHS SJ/T 11364-2014
CE

Classification

Compliant by Exemption
Designed, manufactured and/or distributed under this quality management system
Above Maximum Concentration Value (MCV)
Compliant with the relevant CE product directives

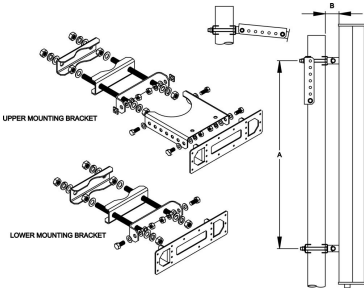


Included Products

T-041-GL-E — Adjustable Tilt Pipe Mounting Kit for 2.0"-4.5" (50-115mm) OD round members for panel antennas. Includes 2 clamp sets.

* Footnotes

Performance Note Severe environmental conditions may degrade optimum performance



Adjustable Tilt Pipe Mounting Kit for 2.0"-4.5" (50-115mm) OD round members for panel antennas. Includes 2 clamp sets.

General Specifications

Application	Outdoor
Includes	Brackets Hardware
Package Quantity	1

Mechanical Specifications

Color	Silver
Material Type	Galvanized steel
Mechanical Tilt	0°-12° in steps of 2°

Dimensions

Antenna-to-Pipe Distance	85.0 mm 3.3 in
Bracket-to-Bracket Distance	976.0 mm 38.4 in
Compatible Diameter, maximum	115.0 mm 4.5 in
Compatible Diameter, minimum	60.0 mm 2.4 in
Compatible Length, maximum	1500.0 mm 59.1 in
Compatible Length, minimum	1200.0 mm 47.2 in
Net Weight	5.5 kg 12.1 lb

Regulatory Compliance/Certifications

Agency	Classification
RoHS 2011/65/EU	Compliant by Exemption
ISO 9001:2015	Designed, manufactured and/or distributed under this quality management system
China RoHS SJ/T 11364-2014	Above Maximum Concentration Value (MCV)
CE	Compliant with the relevant CE product directives

