

5NPX1006F

10-port multibeam antenna, 10x 1710–2180 MHz, 5x 10–14° HPBW, fixed electrical tilt



Electrical Specifications

Frequency Band, MHz	1710–1920	1920–2180
Gain, dBi	21.7	22.3
Beamwidth, Horizontal, degrees	13	12
Beamwidth, Vertical, degrees	11.9	10.9
Beam Tilt, degrees	6	6
USLS (First Lobe), dB	14	16
Front-to-Back Ratio at 180°, dB	32	34
CPR at Boresight, dB	10	10
Isolation, Same Beam, dB	25	25
VSWR Return Loss, dB	1.43 15.0	1.43 15.0
PIM, 3rd Order, 2 x 20 W, dBc	-150	-150
Input Power per Port, maximum, watts	300	300
Polarization	±45°	±45°
Impedance	50 ohm	50 ohm

Electrical Specifications, BASTA*

Frequency Band, MHz	1710–1920	1920–2180
Gain by all Beam Tilts, average, dBi	20.7	21.3
Gain by all Beam Tilts Tolerance, dB	±2	±1.7
Beamwidth, Horizontal Tolerance, degrees	±2.1	±1.7
Beamwidth, Vertical Tolerance, degrees	±0.7	±0.7
USLS, beampeak to 20° above beampeak, dB	17	18
Front-to-Back Total Power at 180° ± 30°, dB	30	32
CPR at Boresight, dB	9	10

* CommScope® supports NGMN recommendations on Base Station Antenna Standards (BASTA). To learn more about the benefits of BASTA, [download the whitepaper Time to Raise the Bar on BSAs](#).

General Specifications

Operating Frequency Band	1710 – 2180 MHz
Antenna Type	Multibeam
Band	Single band
Performance Note	Outdoor usage

5NPX1006F

Mechanical Specifications

RF Connector Quantity, total	10
RF Connector Quantity, high band	10
RF Connector Interface	7-16 DIN Female
Color	Gray
Grounding Type	RF connector inner conductor and body grounded to reflector and mounting bracket
Radiator Material	Brass Low loss circuit board
Radome Material	ASA, UV stabilized
Reflector Material	Aluminum
RF Connector Location	Bottom
Wind Loading, frontal	931.0 N @ 150 km/h 209.3 lbf @ 150 km/h
Wind Speed, maximum	250 km/h 155 mph

Dimensions

Length	889.0 mm 35.0 in
Width	864.0 mm 34.0 in
Depth	202.0 mm 8.0 in
Net Weight, without mounting kit	30.0 kg 66.1 lb

Packed Dimensions

Length	1038.0 mm 40.9 in
Width	977.0 mm 38.5 in
Depth	349.0 mm 13.7 in
Shipping Weight	47.0 kg 103.6 lb

Regulatory Compliance/Certifications

Agency

RoHS 2011/65/EU
ISO 9001:2015
China RoHS SJ/T 11364-2014
CE

Classification

Compliant by Exemption
Designed, manufactured and/or distributed under this quality management system
Below Maximum Concentration Value (MCV)
Compliant with the relevant CE product directives



Included Products

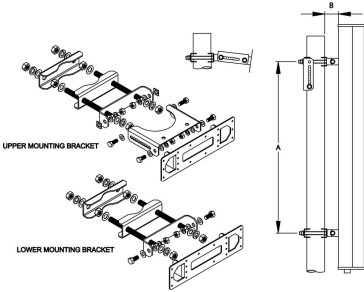
T-045-GL-E — Adjustable Tilt Pipe Mounting Kit for 2.0"-4.5" (50-115mm) OD round members for panel antennas. Includes 2 clamp sets.

* Footnotes

Performance Note

Severe environmental conditions may degrade optimum performance

T-045-GL-E



Adjustable Tilt Pipe Mounting Kit for 2.0"-4.5" (50-115mm) OD round members for panel antennas. Includes 2 clamp sets.

General Specifications

Application	Outdoor
Includes	Brackets Hardware
Package Quantity	1

Mechanical Specifications

Color	Silver
Material Type	Galvanized steel
Mechanical Tilt	0°–10°

Dimensions

Antenna-to-Pipe Distance	85.0 mm 3.3 in
Bracket-to-Bracket Distance	761.0 mm 30.0 in
Compatible Diameter, maximum	115.0 mm 4.5 in
Compatible Diameter, minimum	60.0 mm 2.4 in
Compatible Length, maximum	1200.0 mm 47.2 in
Compatible Length, minimum	850.0 mm 33.5 in
Net Weight	6.0 kg 13.2 lb

Regulatory Compliance/Certifications

Agency	Classification
RoHS 2011/65/EU	Compliant by Exemption
ISO 9001:2015	Designed, manufactured and/or distributed under this quality management system
China RoHS SJ/T 11364-2014	Above Maximum Concentration Value (MCV)

