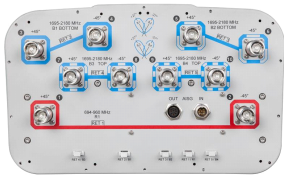


R2HH-6533D-R5



10-port sector/multibeam antenna, 2x 694–960 MHz 65° HPBW and 8x 1695–2180 MHz 4x 33°HPBW, 5x RET with tilt indicators

- All Internal RET actuators are connected in “Cascaded SRET” configuration
- Uses the 4.3-10 connector which is 40 percent smaller than the 7-16 DIN connector
- Enhances network capacity through six sectors on high band while maintaining low band coverage layer through three sectors with only three antenna faces

Electrical Specifications

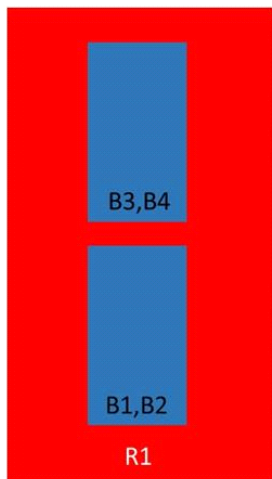
Frequency Band, MHz	694–790	790–890	880–960	1695–1880	1850–1990	1920–2180
Gain, dBi	16.4	16.9	16.9	18.4	19.3	19.8
Beam Centers, Horizontal, degrees				±27	±27	±27
Beamwidth, Horizontal, degrees	68	65	65	33	31	31
Beamwidth, Vertical, degrees	8.9	8.0	7.4	7.2	6.8	6.4
Beam Tilt, degrees	2–12	2–12	2–12	2–12	2–12	2–12
USLS (First Lobe), dB	17	20	19	16	16	17
Front-to-Back Ratio at 180°, dB	32	34	34	28	34	36
Isolation, Cross Polarization, dB	28	28	28	25	25	25
Isolation, Inter-band, dB	30	30	30	30	30	30
Isolation, Beam to Beam, dB				17	17	17
VSWR Return Loss, dB	1.46 14.5	1.46 14.5	1.46 14.5	1.46 14.5	1.46 14.5	1.46 14.5
PIM, 3rd Order, 2 x 20 W, dBc	-150	-150	-150	-150	-150	-150
Input Power per Port at 50°C, maximum, watts	300	300	300	250	250	250
Polarization	±45°	±45°	±45°	±45°	±45°	±45°
Impedance	50 ohm	50 ohm	50 ohm	50 ohm	50 ohm	50 ohm

Electrical Specifications, BASTA*

Frequency Band, MHz	694–790	790–890	880–960	1695–1880	1850–1990	1920–2180
Gain by all Beam Tilts, average, dBi	16.3	16.7	16.8	17.7	18.8	19.3
Gain by all Beam Tilts Tolerance, dB	±0.2	±0.3	±0.3	±1.1	±0.6	±0.7
Gain by Beam Tilt, average, dBi	2 ° 16.1 7 ° 16.3 12 ° 16.3	2 ° 16.5 7 ° 16.8 12 ° 16.6	2 ° 16.6 7 ° 16.9 12 ° 16.7	2 ° 17.6 7 ° 17.8 12 ° 17.5	2 ° 18.6 7 ° 18.9 12 ° 18.6	2 ° 19.1 7 ° 19.5 12 ° 18.9
Beamwidth, Horizontal Tolerance, degrees	±1.3	±1.4	±1.9	±1.8	±1.7	±1.7
Beamwidth, Vertical Tolerance, degrees	±0.5	±0.4	±0.4	±0.3	±0.3	±0.4
USLS, beampeak to 20° above beampeak, dB	17	18	17	15	16	17
Front-to-Back Total Power at 180° ± 30°, dB	25	24	24	24	27	28
CPR at Boresight, dB	16	17	17	16	17	18
CPR at Sector, dB	10	10	9			
CPR at 10 dB Horizontal Beamwidth, dB				6	8	10

* CommScope® supports NGMN recommendations on Base Station Antenna Standards (BASTA). To learn more about the benefits of BASTA, [download the whitepaper Time to Raise the Bar on BSAs](#).

Array Layout

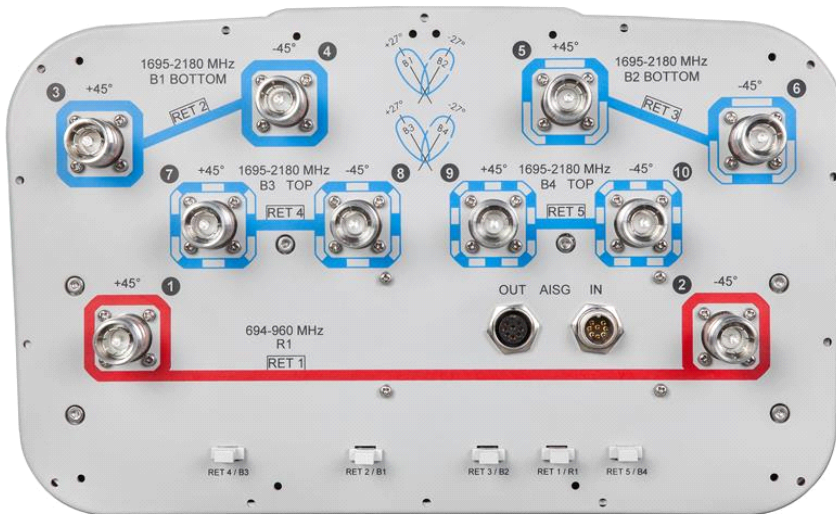


Array	Freq (MHz)	Conns	RET (SRET)	AISG RET UID
R1	694-960	1-2	1	CPxxxxxxxxxxxxxxxxR1
B1	1695-2180	3-4	2	CPxxxxxxxxxxxxxxxxB1
B2	1695-2180	5-6	3	CPxxxxxxxxxxxxxxxxB2
B3	1695-2180	7-8	4	CPxxxxxxxxxxxxxxxxB3
B4	1695-2180	9-10	5	CPxxxxxxxxxxxxxxxxB4

Left Right
Bottom

(Sizes of colored boxes are not true depictions of array sizes)

Port Configuration



R2HH-6533D-R5

General Specifications

Operating Frequency Band	1695 – 2180 MHz 694 – 960 MHz
Antenna Type	Sector
Band	Multiband
Performance Note	Outdoor usage
Total Input Power, maximum	1000 W @ 50 °C

Mechanical Specifications

RF Connector Quantity, total	10
RF Connector Quantity, low band	2
RF Connector Quantity, high band	8
RF Connector Interface	4.3-10 Female
Grounding Type	RF connector inner conductor and body grounded to reflector and mounting bracket
Radiator Material	Copper Low loss circuit board
Radome Material	Fiberglass, UV resistant
Reflector Material	Aluminum
RF Connector Location	Bottom
Wind Loading, frontal	477.0 N @ 150 km/h 107.2 lbf @ 150 km/h
Wind Loading, lateral	409.0 N @ 150 km/h 91.9 lbf @ 150 km/h
Wind Loading, maximum	1010.0 N @ 150 km/h 227.1 lbf @ 150 km/h
Wind Speed, maximum	241 km/h 150 mph

Dimensions

Length	2688.0 mm 105.8 in
Width	350.0 mm 13.8 in
Depth	208.0 mm 8.2 in
Net Weight, without mounting kit	35.0 kg 77.2 lb

Remote Electrical Tilt (RET) Information

Input Voltage	10–30 Vdc
Internal RET	High band (4) Low band (1)
Power Consumption, idle state, maximum	1 W
Power Consumption, normal conditions, maximum	8 W
Protocol	3GPP/AISG 2.0 (Single RET)
RET Hardware	CommRET v2
RET Interface	8-pin DIN Female 8-pin DIN Male

R2HH-6533D-R5

RET Interface, quantity 1 female | 1 male

Packed Dimensions

Length 2830.0 mm | 111.4 in
Width 460.0 mm | 18.1 in
Depth 350.0 mm | 13.8 in
Shipping Weight 50.0 kg | 110.2 lb

Regulatory Compliance/Certifications

Agency

RoHS 2011/65/EU
ISO 9001:2015
China RoHS SJ/T 11364-2014

Classification

Compliant by Exemption
Designed, manufactured and/or distributed under this quality management system
Above Maximum Concentration Value (MCV)



Included Products

BSAMNT-4 — Wide Profile Antenna Downtilt Mounting Kit for 2.4 - 4.5 in (60 - 115 mm) OD round members. Kit contains one scissor top bracket set and one bottom bracket set.

* Footnotes

Performance Note Severe environmental conditions may degrade optimum performance