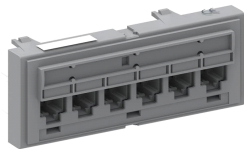


## SYSTIMAX 360™ GigaSPEED X10D® 1100GS6 Evolve Category 6A U/UTP Distribution Module, 6 port



### Product Classification

<b>Portfolio</b>	SYSTIMAX®
<b>Brand</b>	GigaSPEED X10D®   SYSTIMAX 360™
<b>Product Type</b>	Module
<b>Regional Availability</b>	Asia   Australia/New Zealand   EMEA   Latin America   North America

### Dimensions

<b>Depth</b>	28.58 mm   1.13 in
<b>Diameter Over Dielectric, maximum</b>	1.168 mm   0.046 in
<b>Diameter Over Dielectric, minimum</b>	0.762 mm   0.030 in
<b>Height</b>	43.69 mm   1.72 in
<b>Weight</b>	0.07 kg   0.16 lb
<b>Width</b>	482.60 mm   19.00 in

### Electrical Specifications

<b>ANSI/TIA Category</b>	6A
<b>Current Rating</b>	1.5 A @ 20 °C 1.5 A @ 68 °F
<b>Dielectric Withstand Voltage, RMS, conductive surface</b>	1500 Vac @ 60 Hz
<b>Dielectric Withstand Voltage, RMS, contact-to-contact</b>	1000 Vac @ 60 Hz
<b>Insulation Resistance, minimum</b>	500 MOhm

### Environmental Specifications

<b>Flammability Rating</b>	UL 94 V-0
<b>Operating Temperature</b>	-10 °C to +60 °C (+14 °F to +140 °F)
<b>Relative Humidity</b>	Up to 95%, non-condensing
<b>Safety Standard</b>	cUL   UL
<b>Storage Temperature</b>	-40 °C to +70 °C (-40 °F to +158 °F)

### General Specifications

<b>Intelligence Type</b>	iPatch® ready
--------------------------	---------------

<b>Total Ports, quantity</b>	6
<b>Cable Type</b>	Unshielded
<b>Color</b>	Cool gray
<b>Modules, quantity</b>	1
<b>Package Quantity</b>	1
<b>Rack Type</b>	EIA 19 in
<b>Rack Units</b>	1.0

## Mechanical Specifications

<b>Conductor Gauge, solid</b>	22 AWG   24 AWG
<b>Conductor Gauge, stranded</b>	22 AWG   24 AWG
<b>Conductor Type</b>	Solid   Stranded
<b>Contact Plating Material</b>	Precious metals
<b>Material Type</b>	High-impact, flame retardant, thermoplastic   Powder-coated steel
<b>Plug Insertion Life, minimum</b>	750 times
<b>Plug Insertion Life, test plug</b>	IEC 60603-7 compliant plug
<b>Plug Retention Force, minimum</b>	30 lbf   133 N
<b>Termination Contact Plating</b>	Nickel
<b>Termination Type</b>	IDC
<b>Wiring</b>	T568A   T568B

## Regulatory Compliance/Certifications

<b>Agency</b>	<b>Classification</b>
RoHS 2011/65/EU	Compliant
ISO 9001:2015	Designed, manufactured and/or distributed under this quality management system

