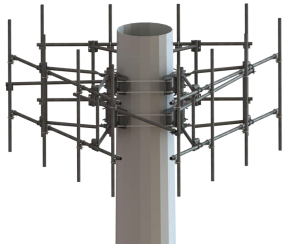


MCG23-10M-9-126



G23 High Capacity 3-Sector Monopole Frame, 10 ft 6 in face, includes nine 126 in pipes; For patents, see www.cs-pat.com.

Product Classification

Product Type High capacity monopole sector frame

Dimensions

Face Width	3.2 m 10.5 ft
Mounting Diameter, maximum	1270.0 mm 50 in
Mounting Diameter, minimum	381.0 mm 15 in
Pipe Outer Diameter	60.3 mm 2 3/8 in
Height	3200.4 mm 126.0 in
Weight	1009.8 kg 2226.2 lb
Width	3200.4 mm 126.0 in

Environmental Specifications

Man Rating	500 lb vertical man load at 15 mph (BWS)
Wind Rating	For Specifications, please contact steelproducts@commscope.com or call 800-255-1479
Wind Rating Test Method	TIA/EIA-222

General Specifications

Pipe Length	3200.4 mm 126.0 in
Pipe, quantity	9
Includes	Pipe mounts Plain end pipes (9) Ring mounts (2) Sector frames (3) Stiff arm
Material Type	Hot dip galvanized steel
Mounting	Monopole, 381–1270 mm (15–50 in) OD
Package Quantity	1
Sectors, quantity	3
Stand-off Distance	1092.2 mm 43.0 in

Regulatory Compliance/Certifications

Agency	Classification
ISO 9001:2015	Designed, manufactured and/or distributed under this quality management system



* Footnotes

Man Rating

BWS—Base Wind Speed

Wind Rating

BWS—Base Wind Speed; FBC—Florida Building Code