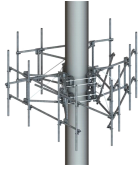


# MCG22-10M-9-126



G22 High Capacity 3-Sector Monopole Frame, 10 ft 6 in face, includes nine 126 in pipes; For patents, see [www.cs-pat.com](http://www.cs-pat.com).

## Product Classification

**Product Type** High capacity monopole sector frame

## Dimensions

<b>Face Width</b>	3.2 m   10.5 ft
<b>Mounting Diameter, maximum</b>	1270.0 mm   50 in
<b>Mounting Diameter, minimum</b>	381.0 mm   15 in
<b>Pipe Outer Diameter</b>	60.3 mm   2 3/8 in
<b>Height</b>	3200.4 mm   126.0 in
<b>Weight</b>	847.3 kg   1868.0 lb
<b>Width</b>	3200.4 mm   126.0 in

## Environmental Specifications

<b>Load Capacity</b>	With additional stiff arm at 300 ft AGL: 600 lb per pipe w/out ice / 2000 lb per pipe including ice
<b>Man Rating</b>	500 lb vertical man load at 15 mph (BWS)
<b>Wind Rating</b>	For Specifications, please contact <a href="mailto:steelproducts@commscope.com">steelproducts@commscope.com</a> or call 800-255-1479
<b>Wind Rating Test Method</b>	TIA/EIA-222
<b>Wind Rating with Additional Stiff Arm</b>	300 ft AGL: 120 mph (BWS) without ice /60 mph with ice

## General Specifications

<b>Pipe Length</b>	3200.4 mm   126.0 in
<b>Pipe, quantity</b>	9
<b>Includes</b>	Pipe mounts   Plain end pipes (9)   Ring mounts (2)   Sector frames (3)   Stiff arm
<b>Material Type</b>	Hot dip galvanized steel
<b>Mounting</b>	Monopole, 381–1270 mm (15–50 in) OD
<b>Package Quantity</b>	1
<b>Sectors, quantity</b>	3
<b>Stand-off Distance</b>	1117.6 mm   44.0 in

## Regulatory Compliance/Certifications

<b>Agency</b>	<b>Classification</b>
ISO 9001:2015	Designed, manufactured and/or distributed under this quality management system



## \* Footnotes

<b>Man Rating</b>	BWS—Base Wind Speed
<b>Wind Rating</b>	BWS—Base Wind Speed; FBC—Florida Building Code
<b>Wind Rating with Additional Stiff Arm</b>	BWS—Base Wind Speed; FBC—Florida Building Code