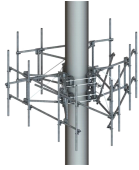


MCG22-12M-12-126



G22 High Capacity 3-Sector Monopole Frame, 12 ft 6 in face, includes twelve 126 in pipes; For patents, see www.cs-pat.com.

Product Classification

Product Type High capacity monopole sector frame

Dimensions

Face Width 3.8 m | 12.5 ft
Mounting Diameter, maximum 1270.0 mm | 50 in
Mounting Diameter, minimum 381.0 mm | 15 in
Pipe Outer Diameter 60.3 mm | 2 3/8 in
Height 3200.4 mm | 126.0 in
Weight 948.5 kg | 2091.0 lb
Width 3810.0 mm | 150.0 in

Environmental Specifications

Load Capacity With additional stiff arm at 300 ft AGL: 600 lb per pipe w/out ice / 1775 lb per pipe including ice
Man Rating 500 lb vertical man load at 15 mph (BWS)
Wind Rating For Specifications, please contact steelproducts@commscope.com or call 800-255-1479
Wind Rating Test Method TIA/EIA-222
Wind Rating with Additional Stiff Arm 300 ft AGL: 120 mph (BWS) without ice /60 mph with ice

General Specifications

Pipe Length 3200.4 mm | 126.0 in
Pipe, quantity 12
Includes Pipe mounts | Plain end pipes (12) | Ring mounts (2) | Sector frames (3) | Stiff arm
Material Type Hot dip galvanized steel
Mounting Monopole, 381–1270 mm (15–50 in) OD
Package Quantity 1
Sectors, quantity 3
Stand-off Distance 1117.6 mm | 44.0 in

Regulatory Compliance/Certifications

Agency ISO 9001:2015
Classification Designed, manufactured and/or distributed under this quality management system



* Footnotes

Man Rating	BWS—Base Wind Speed
Wind Rating	BWS—Base Wind Speed; FBC—Florida Building Code
Wind Rating with Additional Stiff Arm	BWS—Base Wind Speed; FBC—Florida Building Code