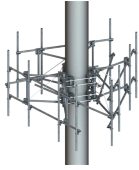


MCG22-14M-9-96



G22 High Capacity 3-Sector Monopole Frame, 14 ft 6 in face, includes nine 96 in pipes; For patents, see www.cs-pat.com.

Product Classification

Product Type High capacity monopole sector frame

Dimensions

Face Width	4.4 m 14.5 ft
Mounting Diameter, maximum	1270.0 mm 50 in
Mounting Diameter, minimum	381.0 mm 15 in
Pipe Outer Diameter	60.3 mm 2 3/8 in
Height	2438.4 mm 96.0 in
Weight	878.2 kg 1936.0 lb
Width	4419.6 mm 174.0 in

Environmental Specifications

Load Capacity	With additional stiff arm at 300 ft AGL: 600 lb per pipe w/out ice / 1275 lb per pipe including ice
Man Rating	500 lb vertical man load at 15 mph (BWS)
Wind Rating	For Specifications, please contact steelproducts@commscope.com or call 800-255-1479
Wind Rating Test Method	TIA/EIA-222
Wind Rating with Additional Stiff Arm	300 ft AGL: 120 mph (BWS) without ice /60 mph with ice

General Specifications

Pipe Length	2438.4 mm 96.0 in
Pipe, quantity	9
Includes	Pipe mounts Plain end pipes (9) Ring mounts (2) Sector frames (3) Stiff arm
Material Type	Hot dip galvanized steel
Mounting	Monopole, 381–1270 mm (15–50 in) OD
Package Quantity	1
Sectors, quantity	3
Stand-off Distance	1117.6 mm 44.0 in

Outline Drawing

Regulatory Compliance/Certifications

Agency	Classification
--------	----------------

ISO 9001:2015 Designed, manufactured and/or distributed under this quality management system



* Footnotes

- | | |
|--|--|
| Man Rating | BWS—Base Wind Speed |
| Wind Rating | BWS—Base Wind Speed; FBC—Florida Building Code |
| Wind Rating with Additional Stiff Arm | BWS—Base Wind Speed; FBC—Florida Building Code |