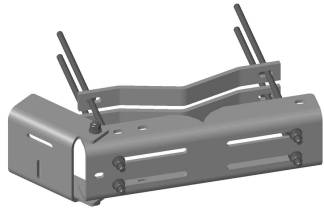


MDL-CS



Universal Microwave Strut Support

Product Classification

Product Type Microwave strut support

Dimensions

Length 203.2 mm | 8.0 in
Width 508.0 mm | 20.0 in
Height 152.4 mm | 6.0 in
Mounting Diameter, maximum 406.4 mm | 16 in
Mounting Diameter, minimum 50.8 mm | 2 in
Weight 29.5 kg | 65.0 lb

Environmental Specifications

Wind Rating For Specifications, please contact steelproducts@commscope.com or call 800-255-1479

General Specifications

Includes Attachment hardware | Clamps
Material Type Hot dip galvanized steel
Mounting Straight or tapered legs up to 406.4 mm (16 in) OD
Package Quantity 1
Pipe, quantity 0
Tower Taper Non-tapered | Tapered

Regulatory Compliance/Certifications

Agency ISO 9001:2015
Classification Designed, manufactured and/or distributed under this quality management system



* Footnotes

Wind Rating BWS—Base Wind Speed; FBC—Florida Building Code