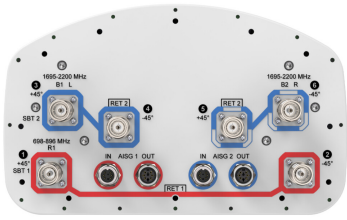


NHH-65C-HG-R2B



6-port Next Generation High Performance sector antenna, 2x 698–896 and 4x 1695–2200 MHz, 65° HPBW, 2x RET

- Antenna optimized for higher gain with improved radiation efficiency
- Designed to reduce SUB 1 alarm triggers with pattern consistency between low band and mid band
- Enhanced interference mitigation for improved SINR and throughput
- Interleaved dipole technology results into an attractive, low wind load mechanical package
- Internal SBTs allow remote RET control from the radio over the RF jumper cable
- Powered by ANDREW's next generation high-efficiency SEED™ technology

General Specifications

| | |
|---|--|
| Antenna Type | Sector |
| Band | Multiband |
| Color | Light Gray (RAL 7035) |
| Grounding Type | RF connector body grounded to reflector and mounting bracket |
| Performance Note | Outdoor usage |
| Radome Material | Fiberglass, UV resistant |
| Radiator Material | Copper Low loss circuit board |
| Reflector Material | Aluminum |
| RF Connector Interface | 4.3-10 Female |
| RF Connector Location | Bottom |
| RF Connector Quantity, high band | 0 |
| RF Connector Quantity, mid band | 4 |
| RF Connector Quantity, low band | 2 |
| RF Connector Quantity, total | 6 |

Remote Electrical Tilt (RET) Information

| | |
|--------------------------------|-----------------------------------|
| RET Hardware | CommRET v2 |
| RET Interface | 8-pin DIN Female 8-pin DIN Male |
| RET Interface, quantity | 2 female 2 male |
| Input Voltage | 10–30 Vdc |
| Internal Bias Tee | Port 1 Port 3 |
| Internal RET | Low band (1) Mid band (1) |

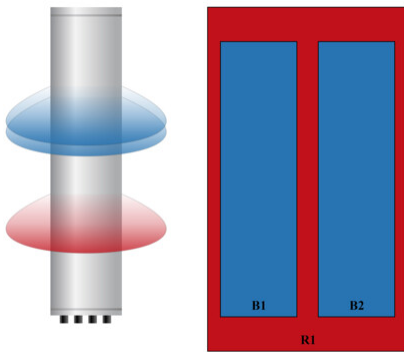
NHH-65C-HG-R2B

| | |
|---|----------------------------|
| Power Consumption, active state, maximum | 10 W |
| Power Consumption, idle state, maximum | 2 W |
| Protocol | 3GPP/AISG 2.0 (Single RET) |

Dimensions

| | |
|---------------------------------|---------------------|
| Width | 301 mm 11.85 in |
| Depth | 180 mm 7.087 in |
| Length | 2438 mm 95.984 in |
| Net Weight, antenna only | 24.4 kg 53.793 lb |

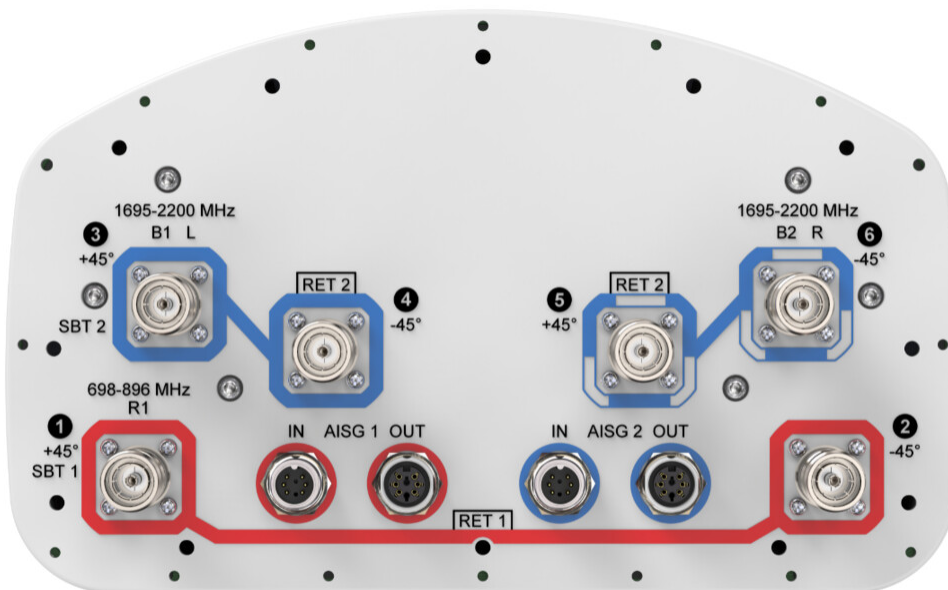
Array Layout



| Array ID | Frequency (MHz) | RF Connector | RET (SRET) | AISG No. | SBT RF PORT | SBT No. | RET UID |
|----------|-----------------|--------------|------------|----------|-------------|---------|----------------------|
| R1 | 698-896 | 1 - 2 | 1 | AISG1 | 1 | 1 | CPxxxxxxxxxxxxxxxxR1 |
| B1 | 1695-2200 | 3 - 4 | 2 | AISG2 | 3 | 2 | CPxxxxxxxxxxxxxxxxB1 |
| B2 | 1695-2200 | 5 - 6 | | | | | |

(Sizes of colored boxes are not true depictions of array sizes)

Port Configuration



NHH-65C-HG-R2B

Electrical Specifications

| | |
|---------------------------------|---------------------------------|
| Impedance | 50 ohm |
| Operating Frequency Band | 1695 – 2200 MHz 698 – 896 MHz |
| Polarization | ±45° |

Electrical Specifications

| | R1 | R1 | B1,B2 | B1,B2 | B1,B2 |
|---|----------------|----------------|------------------|------------------|------------------|
| Frequency Band, MHz | 698–798 | 824–896 | 1695–1880 | 1850–1990 | 1920–2200 |
| RF Port | 1,2 | 1,2 | 3,4,5,6 | 3,4,5,6 | 3,4,5,6 |
| Gain, dBi | 17 | 17.3 | 19.1 | 19.3 | 19.8 |
| Beamwidth, Horizontal, degrees | 65 | 60 | 66 | 65 | 63 |
| Beamwidth, Vertical, degrees | 8.7 | 7.7 | 5.2 | 4.9 | 4.7 |
| Beam Tilt, degrees | 0–11 | 0–11 | 0–7 | 0–7 | 0–7 |
| USLS (First Lobe), dB | 16 | 16 | 17 | 18 | 18 |
| Front-to-Back Ratio at 180°, dB | 30 | 31 | 37 | 35 | 37 |
| Isolation, Cross Polarization, dB | 25 | 25 | 25 | 25 | 25 |
| VSWR Return loss, dB | 1.5 14.0 | 1.5 14.0 | 1.5 14.0 | 1.5 14.0 | 1.5 14.0 |
| PIM, 3rd Order, 2 x 20 W, dBc | -153 | -153 | -153 | -153 | -153 |
| Input Power per Port at 50°C, maximum, watts | 300 | 300 | 250 | 250 | 250 |

Mechanical Specifications

| | |
|---|---|
| Wind Loading @ Velocity, frontal | 393.0 N @ 150 km/h (88.3 lbf @ 150 km/h) |
| Wind Loading @ Velocity, lateral | 330.0 N @ 150 km/h (74.2 lbf @ 150 km/h) |
| Wind Loading @ Velocity, maximum | 757.0 N @ 150 km/h (170.2 lbf @ 150 km/h) |
| Wind Loading @ Velocity, rear | 398.0 N @ 150 km/h (89.5 lbf @ 150 km/h) |
| Wind Speed, maximum | 241 km/h (150 mph) |

Packaging and Weights

| | |
|-----------------------|----------------------|
| Width, packed | 380 mm 14.961 in |
| Depth, packed | 295 mm 11.614 in |
| Length, packed | 2571 mm 101.221 in |

NHH-65C-HG-R2B

Weight, gross

36.8 kg | 81.13 lb

Regulatory Compliance/Certifications

Agency

Classification

CHINA-ROHS

Below maximum concentration value

ISO 9001:2015

Designed, manufactured and/or distributed under this quality management system

REACH-SVHC

Compliant as per SVHC revision on www.commscope.com/ProductCompliance

ROHS

Compliant

UK-ROHS

Compliant



Included Products

BSAMNT-3

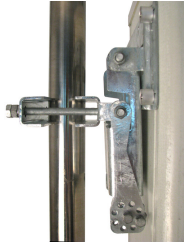
- Wide Profile Antenna Downtilt Mounting Kit for 2.4 - 4.5 in (60 - 115 mm) OD round members. Kit contains one scissor top bracket set and one bottom bracket set.

* Footnotes

Performance Note

Severe environmental conditions may degrade optimum performance

BSAMNT-3



Wide Profile Antenna Downtilt Mounting Kit for 2.4 - 4.5 in (60 - 115 mm) OD round members. Kit contains one scissor top bracket set and one bottom bracket set.

Product Classification

Product Type Downtilt mounting kit

General Specifications

Application Outdoor

Color Silver

Dimensions

Compatible Diameter, maximum 115 mm | 4.528 in

Compatible Diameter, minimum 60 mm | 2.362 in

Weight, net 6.2 kg | 13.669 lb

Material Specifications

Material Type Galvanized steel

Packaging and Weights

Included Brackets | Hardware

Packaging quantity 1

Weight, gross 6.4 kg | 14.11 lb

Regulatory Compliance/Certifications

| Agency | Classification |
|---------------|--|
| CE | Compliant with the relevant CE product directives |
| CHINA-ROHS | Below maximum concentration value |
| ISO 9001:2015 | Designed, manufactured and/or distributed under this quality management system |
| REACH-SVHC | Compliant as per SVHC revision on www.andrew.com/ProductCompliance |
| ROHS | Compliant |
| UK-ROHS | Compliant |

BSAMNT-3

