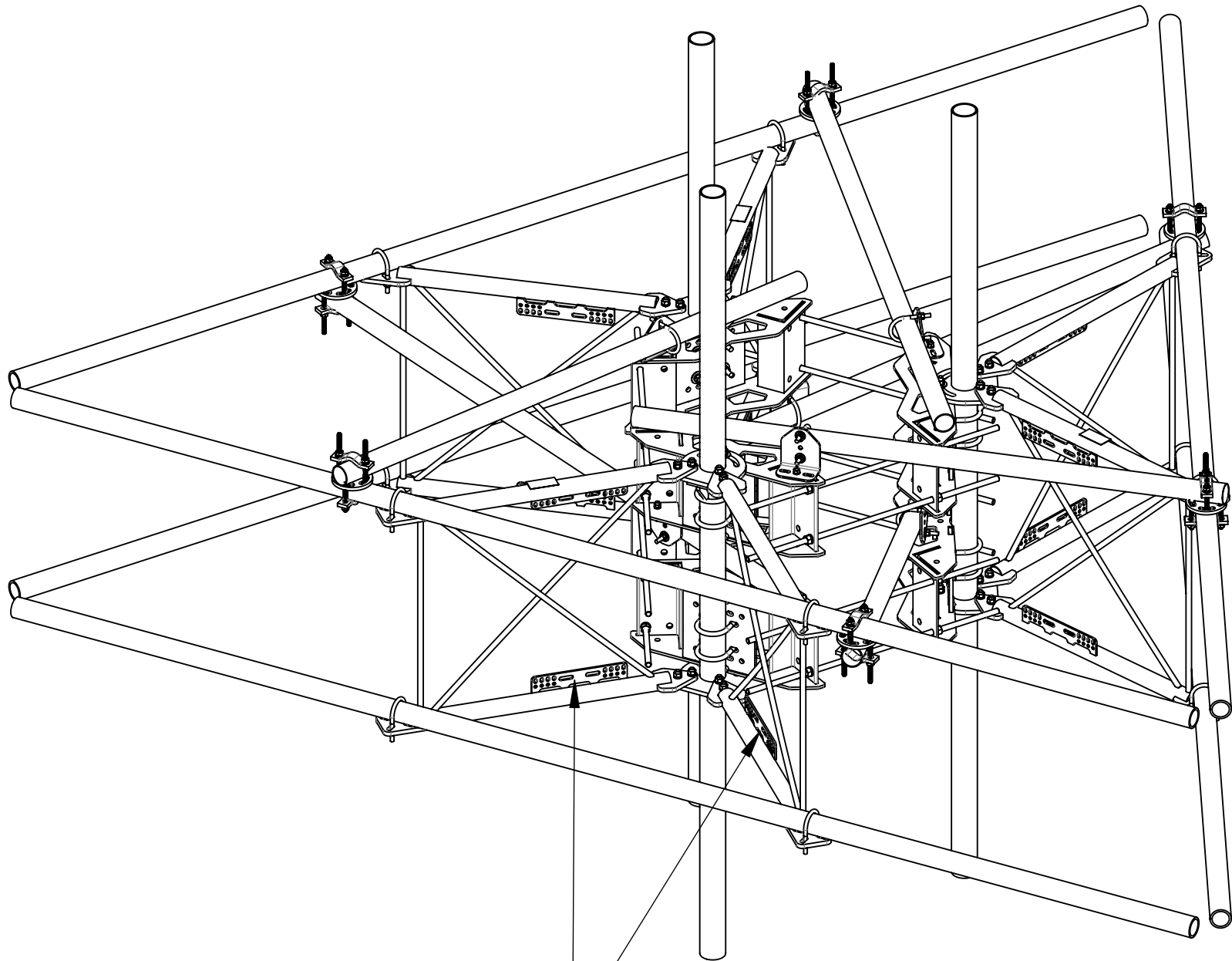

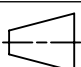


- 1.0 GENERAL NOTES
- 1.1 ALL METRIC DIMENSIONS ARE IN BRACKETS [X. X]
- 1.2 FOR PATENT INFO: <https://www.cs-pat.com>
- 2.0 DESIGN NOTES
- 2.1 ANY HAZARDS OR OBSTRUCTIONS TO THE CLIMBING FACILITY AND SAFETY CLIMB MUST BE IDENTIFIED PRIOR TO INSTALLING THE APPURTENANCE. ADDITIONAL PRODUCTS MAY BE REQUIRED TO MAINTAIN THE INTEGRITY OF THE SAFETY CLIMB. DURING INSTALLATION, TEMPORARY AND/OR PERMANENT PRECAUTIONARY MEASURES SHOULD BE TAKEN TO PRESERVE THE CLIMBING FACILITY AND/OR SAFETY CLIMB.
- 2.2 FITS MONOPOLES 30" TO 50" OD.
- 3.0 MANUFACTURING/SPECIAL REQUIREMENTS
- 3.1 TIGHTEN ALL BOLTS SECURING FLAT PLATES BY THE TURN-OF-NUT METHOD. TIGHTEN ALL U-BOLTS USING TURN-OF-NUT METHOD WITH ATTENTION TO LEAVE EQUAL DISTANCE AND EQUAL FORCE ON EACH LEG OF THE U-BOLT.
- 4.0 TEST
- 5.0 PACKAGING
- 5.1 PACKAGING SHALL MEET COMMSCOPE REQUIREMENTS PER DOCUMENT IS-PL-3005.
- 5.2 PRINTED DOCUMENT TO BE PLACED INSIDE POLYBAG AND THEN IN SHIPPING CONTAINER.
- 5.3 EXTRA HARDWARE MAY BE SUPPLIED, BAGGED AND SHIPPED.



SHOULD BE INSTALLED WITH UNIVERSAL  
INTERFACE PLATES FACING OUTWARDS

REVISIONS			
REV.	DESCRIPTION	DATE	APPROVED
A	INITIAL RELEASE	JL1183 16APR24	CB1094 40193542CMO
B	V-ARM SFG2292-00 (ITEM 3) WAS SFG2278; SHEET5: ADDED V-ARM DETAIL VIEW	JL1183 12JUL24	CB1094 40200155CMO

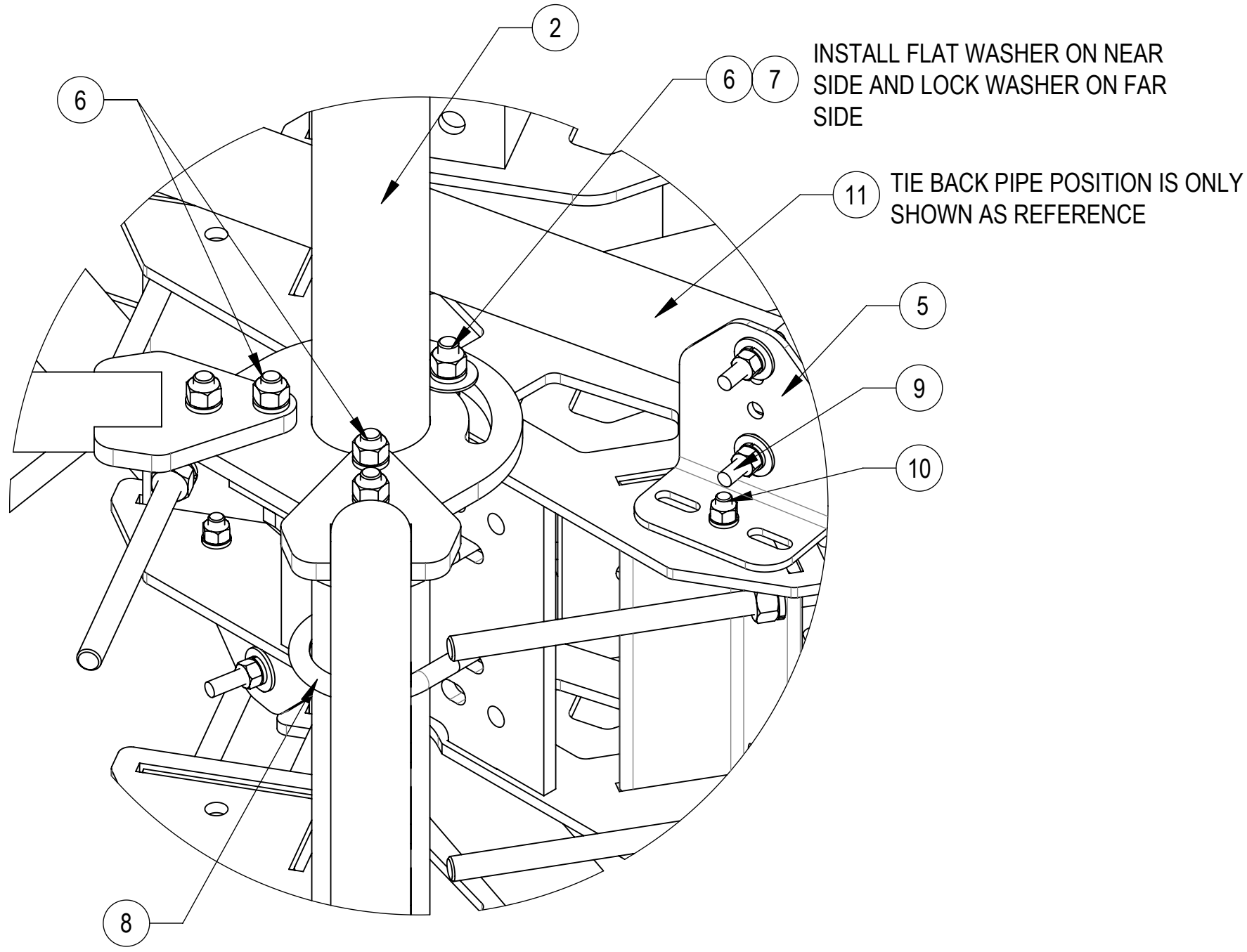
COMMSCOPE, INC. OF NORTH CAROLINA											
TOLERANCES							SAP MATERIAL MASTER				
0 PLACE X[X.] ± 0.25[6.3] 2 PLACE .XX[X.] ± 0.06[1.5]							MCG22RHDX-15MB				
1 PLACE .X[X.] ± 0.12[3.0] ANGLES ± 2°											
FINISH							MATERIAL				
UNLESS OTHERWISE SPECIFIED DIMENSIONS ARE IN INCHES INTERPRET PER ANSI Y 14.5M-1994		NAME	DATE	MP,SF,15'FP,NOAP							
	CE	JL1183	18FEB24								
	RW	JL1183	07/15/2024								
	AD	CB1094	07/17/2024	SCALE 1:20	DOCUMENT NO. MCG22RHDX-15MB						
	RE	YMENG	08/05/2024								
	ECN 40200155CMO										
	SIZE	Auth Group	INSL	MODEL			DRAWING			SHEET 1 OF 4	
C			VERSION	STATUS	REVISION	VERSION	STATUS	REVISION			
			01	RE	B	01	RE	B			

D

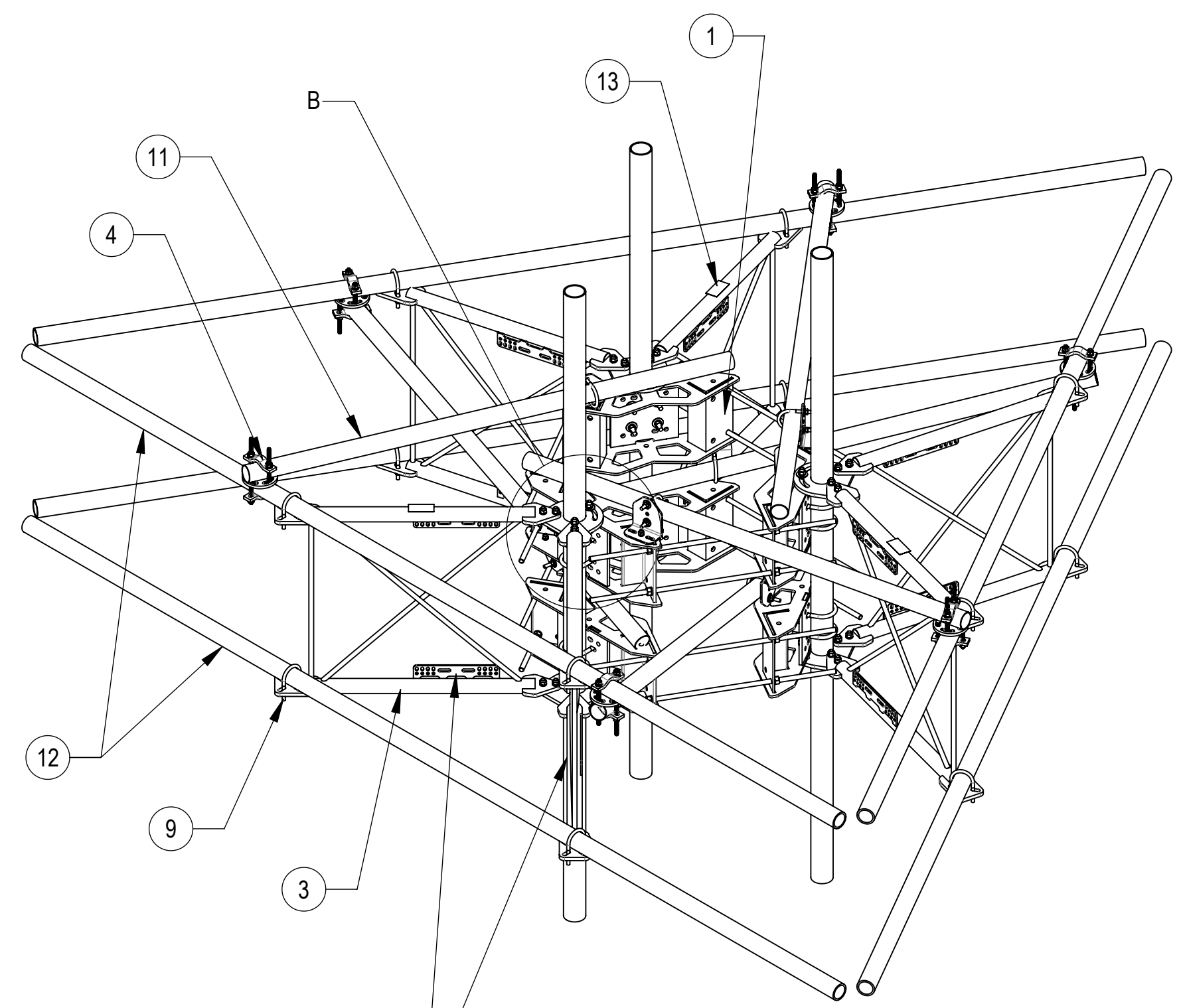
C

B

A



DETAIL B  
SCALE 1 : 4



TOP

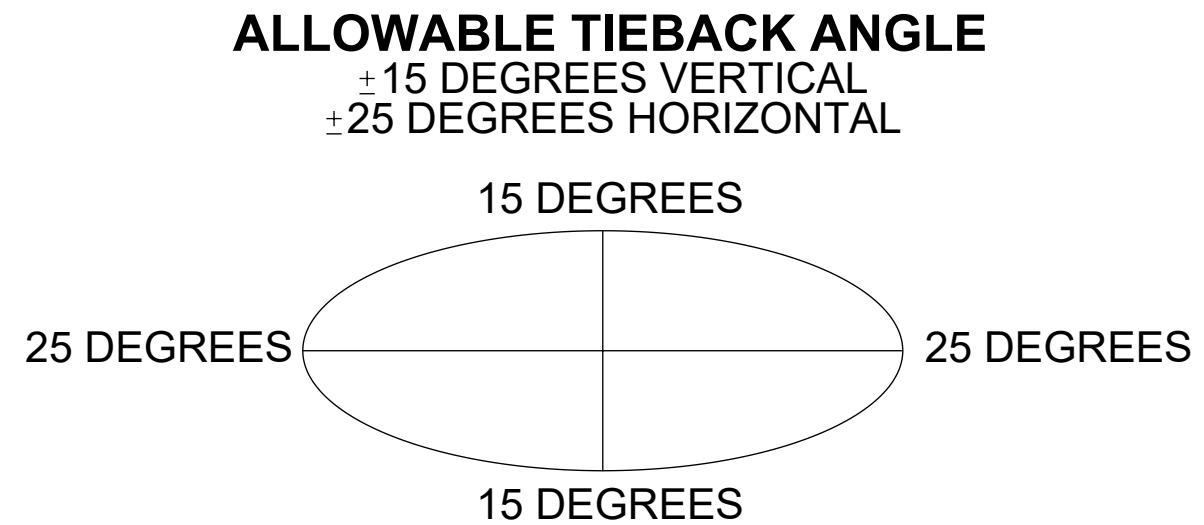
↓

BOTTOM

COMPONENT PART NUMBERS PROVIDED FOR ASSEMBLY PURPOSES;  
INDIVIDUAL COMPONENTS MAY BE SHIPPED AS PARTS WITHIN AN INCLUDED KIT.

ITEM	PART NO.	DESCRIPTION	QTY.	WEIGHT	NOTE NO.
1	MC-RM1550-3	15" - 50" OD RINGMOUNT	2	229.90 LBS	
2	SFG2204	WELDMENT, BACK VERTICAL ARM MOUNT	3	36.96 LBS	
3	SFG2292-00	WELDMENT, V-ARM, SECTOR FRAME 22	6	49.69 LBS	
4	XP-R	CROSSOVER PLATE, ROUND, UP TO 3.5" OD	6	6.20 LBS	
5	XAU01	ANGLE, CROSSOVER, 1.9-3.5" X 1.9-3.5" OD	6	2.98 LBS	
6	GB-05225	5/8" X 2-1/4" GALV BOLT KIT	30	0.28 LBS	
7	GWF-05	5/8" GALV FLAT WASHER, 1.7OD	6	0.06 LBS	
8	GUB-53560	5/8" X 3-5/8" X 6" GALV U-BOLT	12	1.30 LBS	
9	GUB-4352	1/2" X 3" X 5-1/4" GALV U-BOLT	18	0.71 LBS	
10	GB-04145	1/2" X 1-1/2" GALV BOLT KIT	6	0.13 LBS	
11	MT546084120	2.88" OD X 84" LONG PIPE	6	24.81 LBS	
12	MT546180276	PIPE, 2.875"OD X 180"	6	115.33 LBS	
13	SFG2295	LABEL, SFG22RHD	3	0.04 LBS	

B



COMMScope, INC. OF NORTH CAROLINA					
TITLE					
MP,SF,15'FP,NOAP					
SIZE	SCALE	DOCUMENT NO.			
C	1:20	MCG22RHD			
		DRAWING			SHEET
		VERSION	STATUS	REVISION	
		01	RE	B	2 OF 4

D

D

C

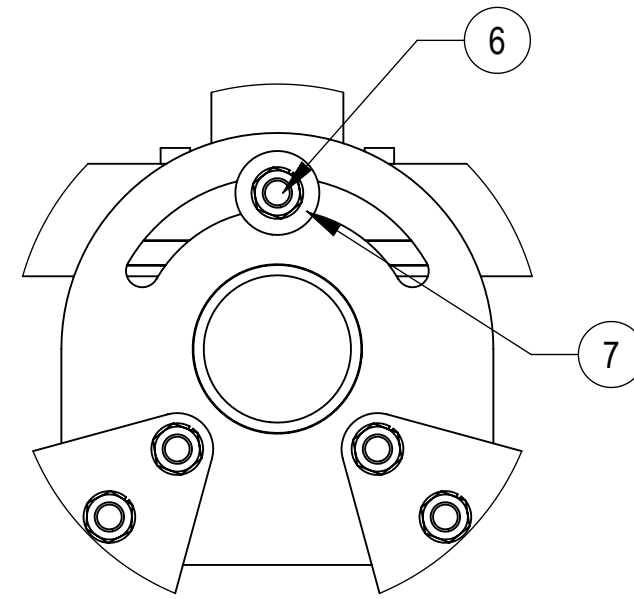
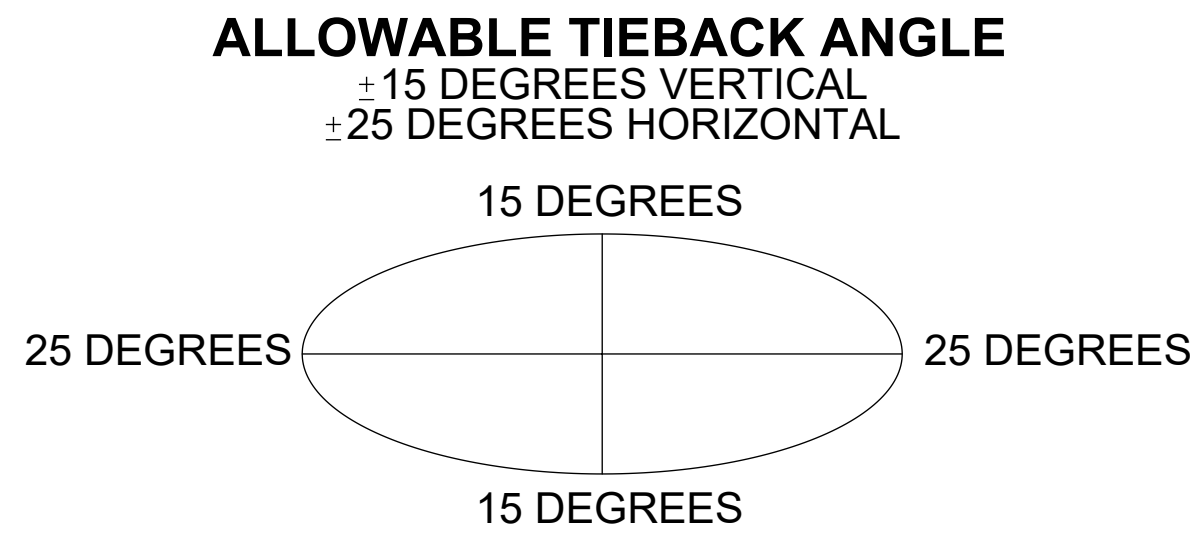
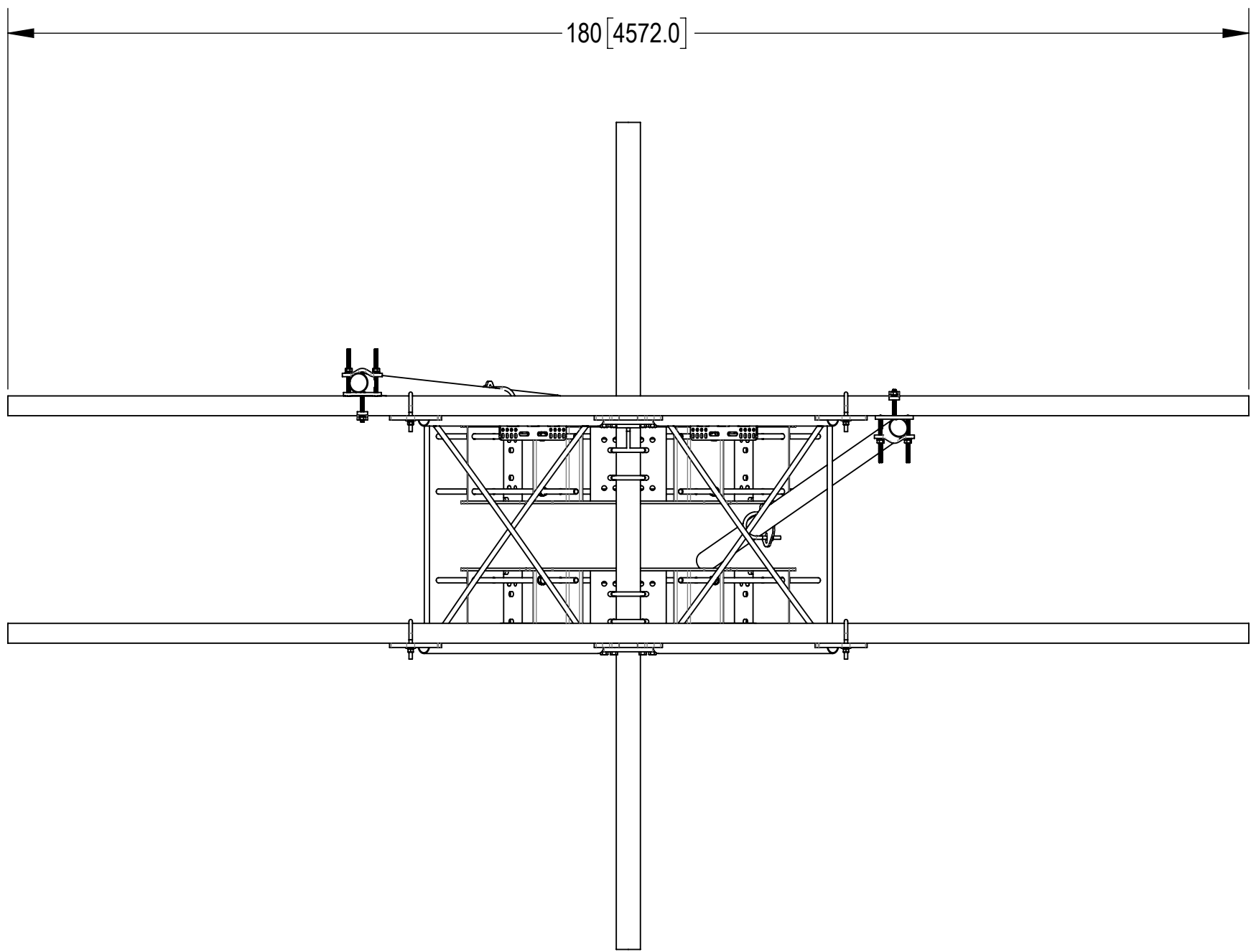
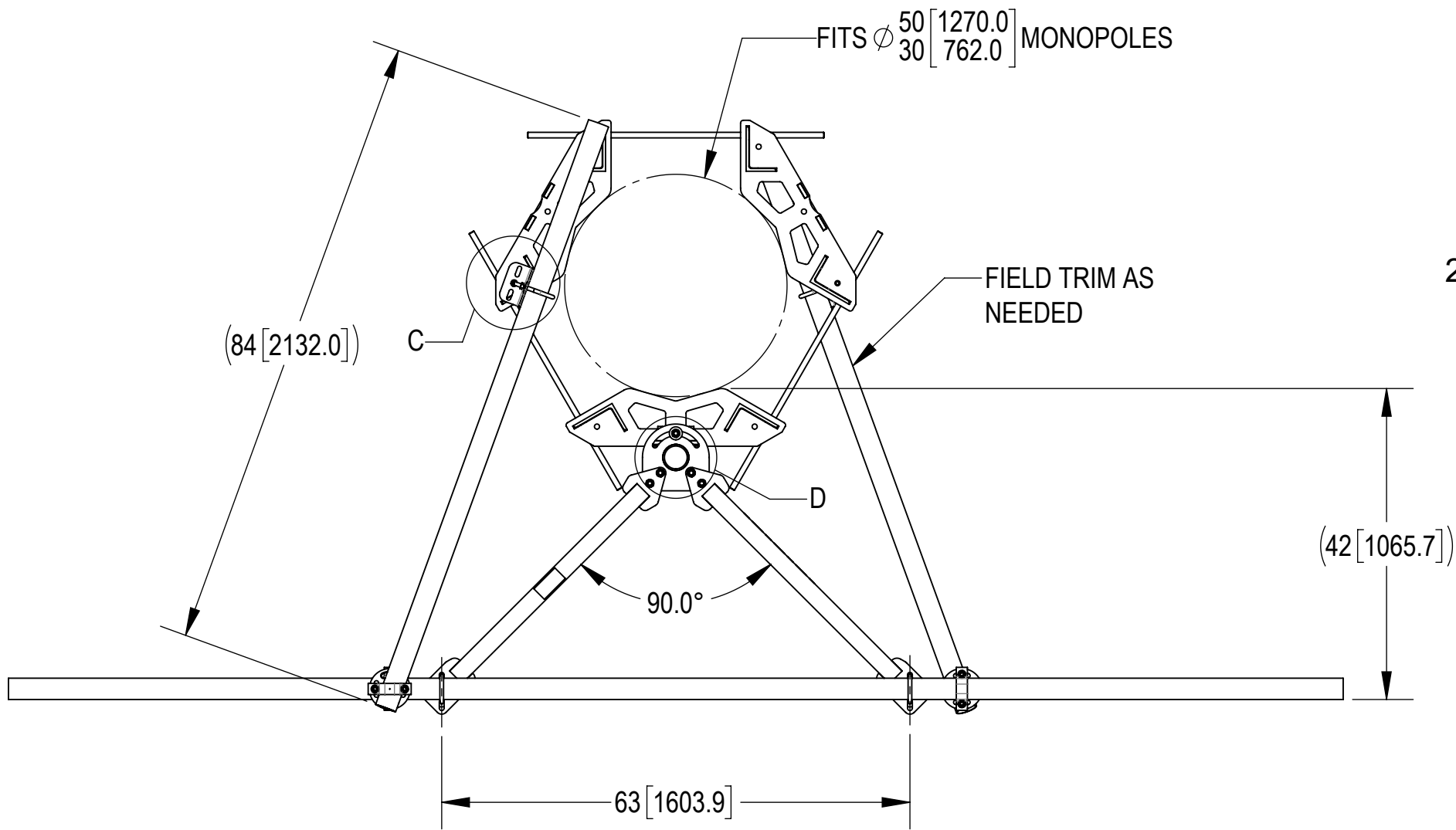
C

B

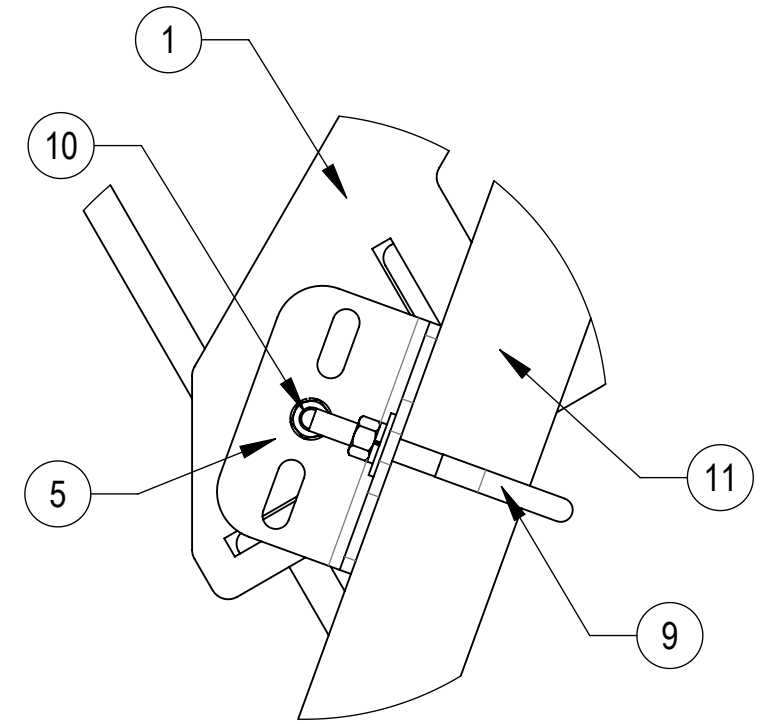
B

A

A

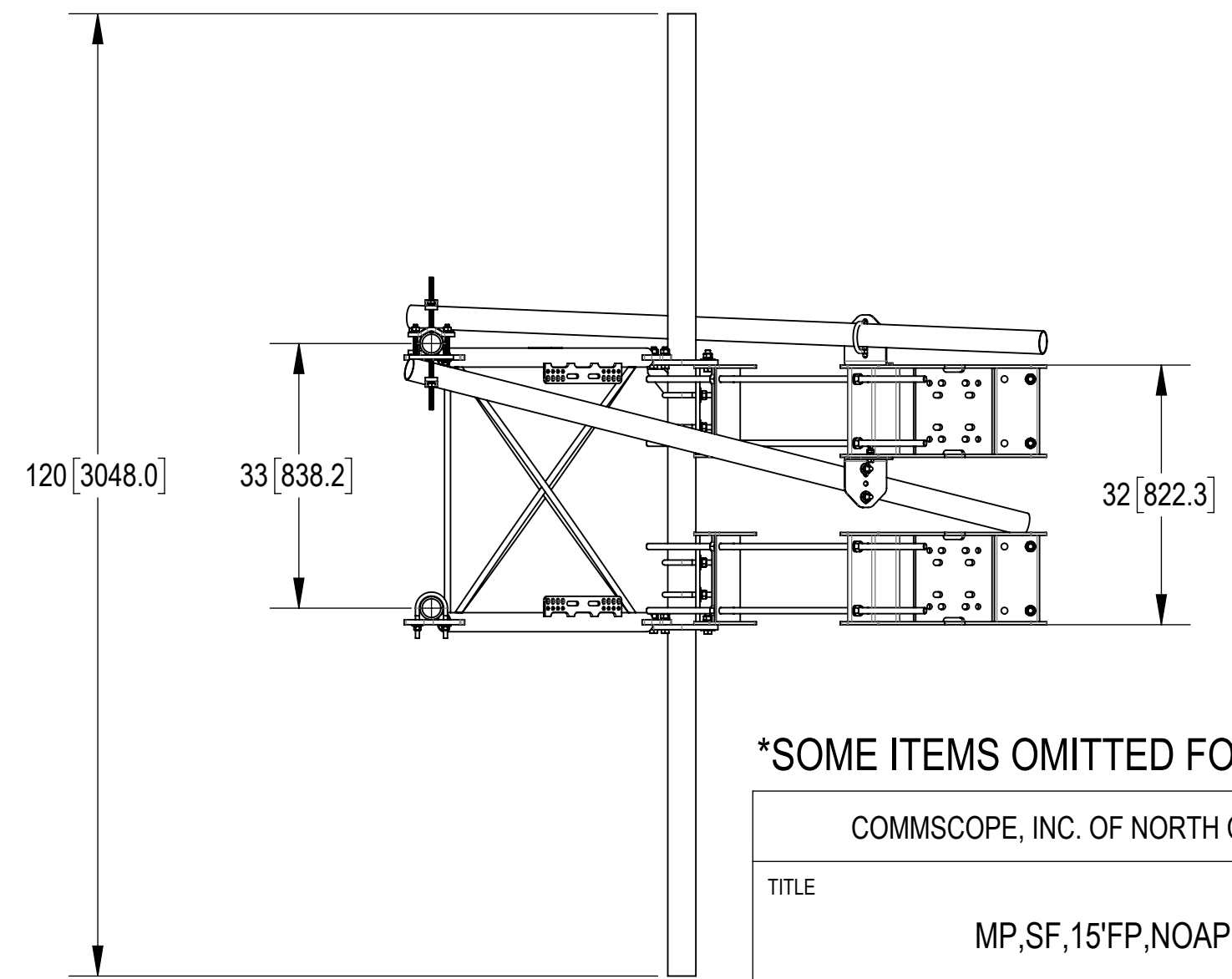


DETAIL D  
SCALE 1 : 4


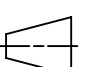


DETAIL C  
SCALE 1 : 4

TOP  
BOTTOM



\*SOME ITEMS OMITTED FOR CLARITY\*

COMMScope, INC. OF NORTH CAROLINA				
TITLE				
MP,SF,15'FP,NOAP				
SIZE	SCALE	DOCUMENT NO.		
C	1:20	MCG22RHDX-15MB		
 		DRAWING		
		VERSION	STATUS	REVISION
		01	RE	B
				SHEET
				3 OF 4

D

D

C

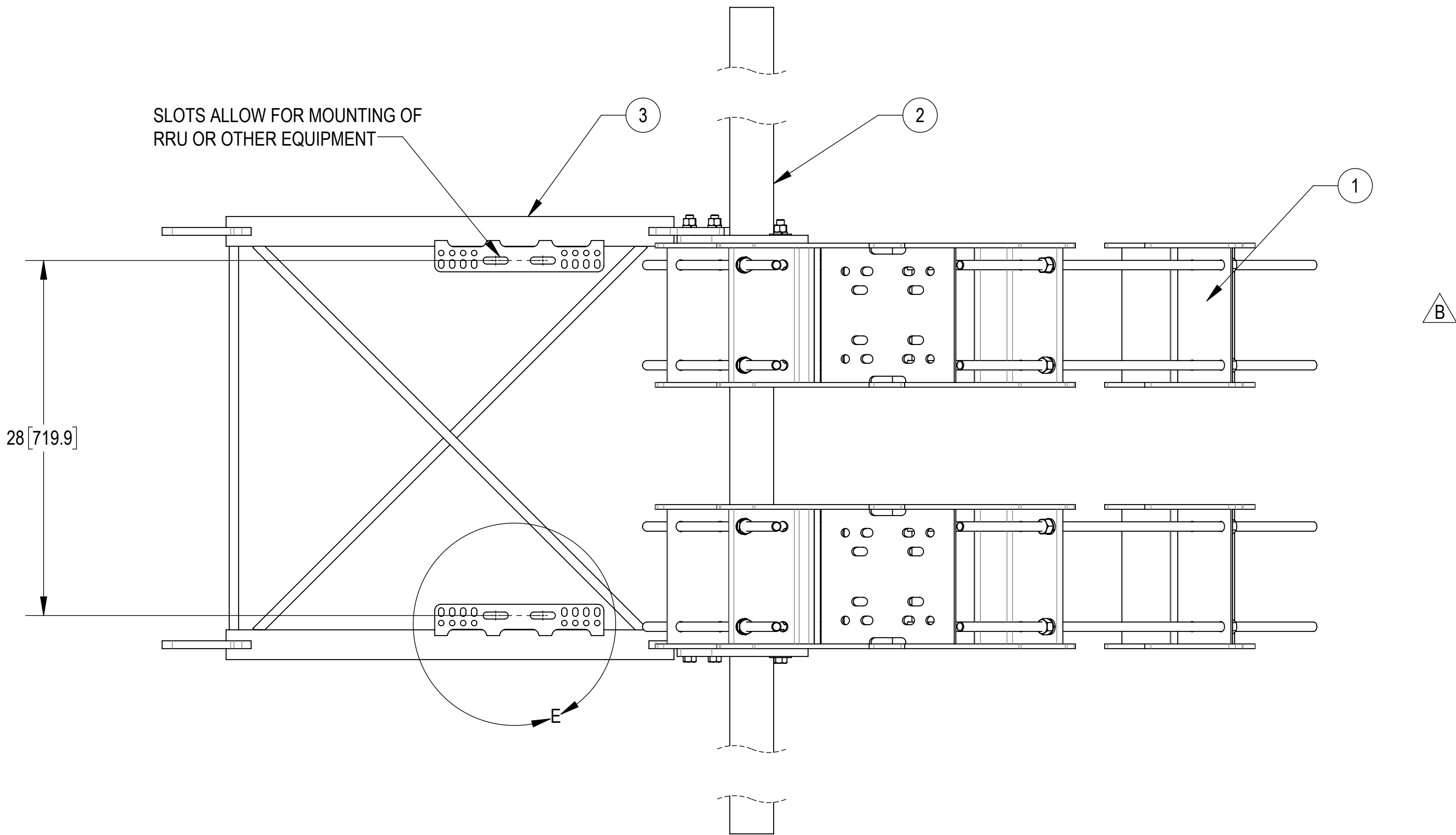
C

B

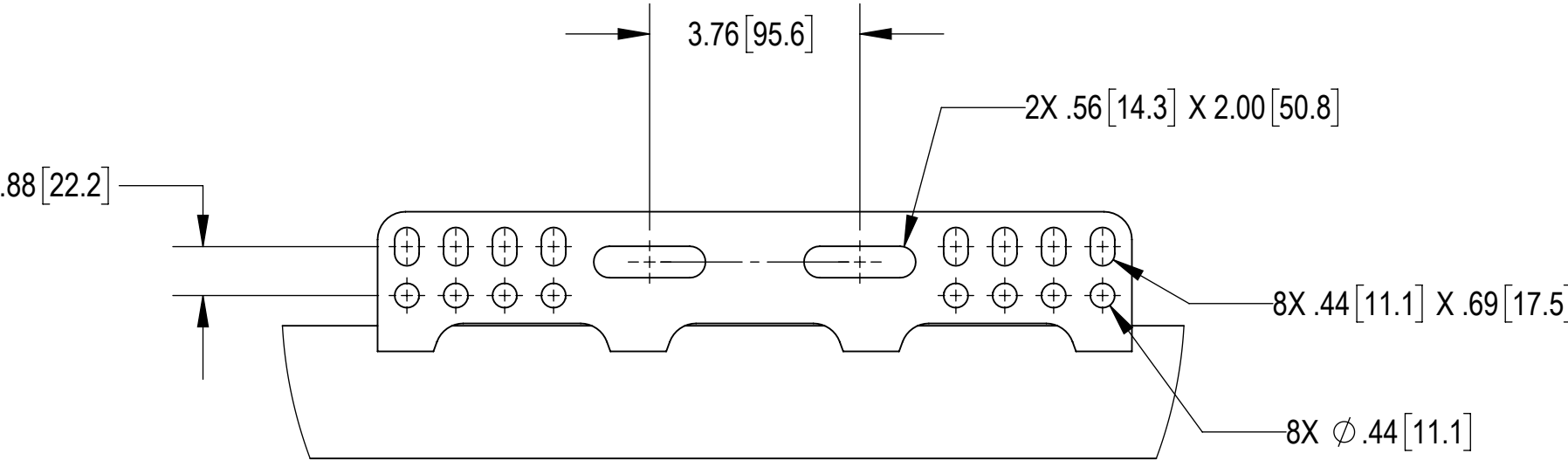
B

A

A



SIDE VIEW



DETAIL E  
SCALE 1 : 3  
2 PLACES

\*SOME ITEMS OMITTED FOR CLARITY\*

COMMScope, INC. OF NORTH CAROLINA				
TITLE MP,SF,15'FP,NOAP				
SIZE C	SCALE 1:8	DOCUMENT NO. MCG22RHDx-15MB		
		DRAWING		
		VERSION 01	STATUS RE	REVISION B
				SHEET 4 OF 4