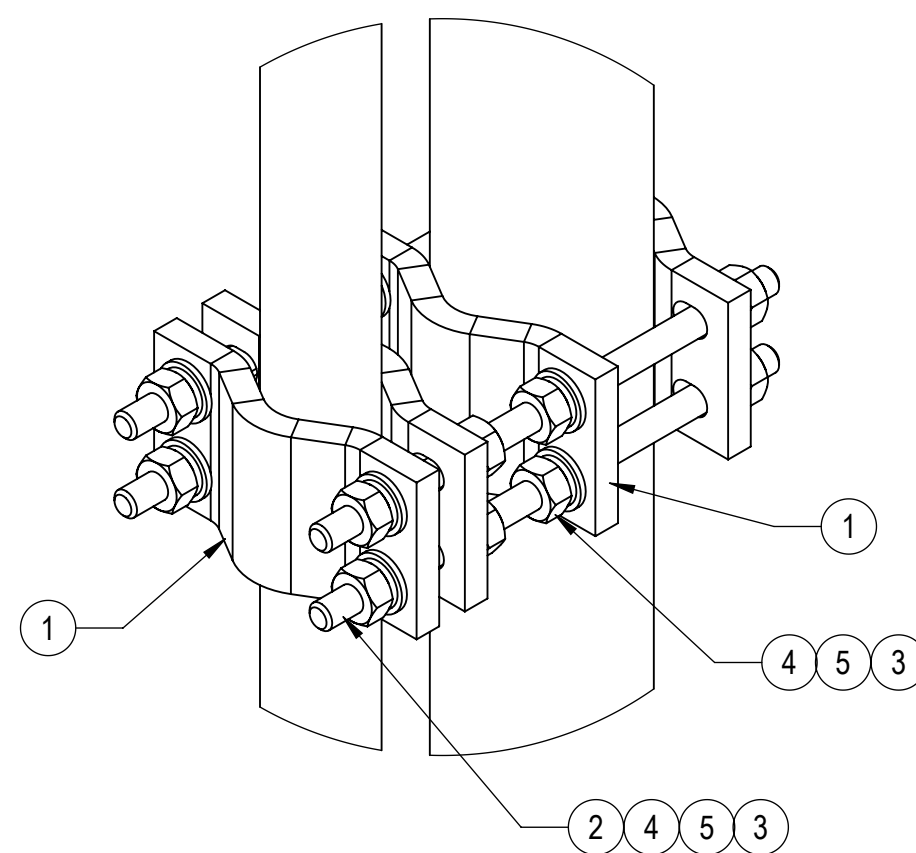
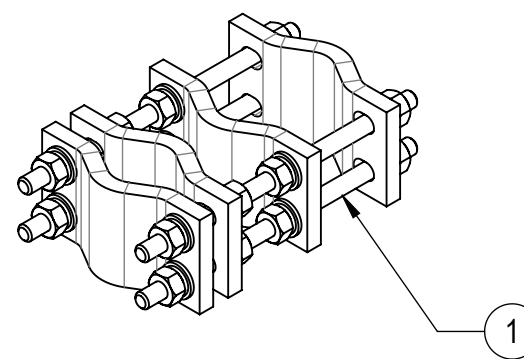
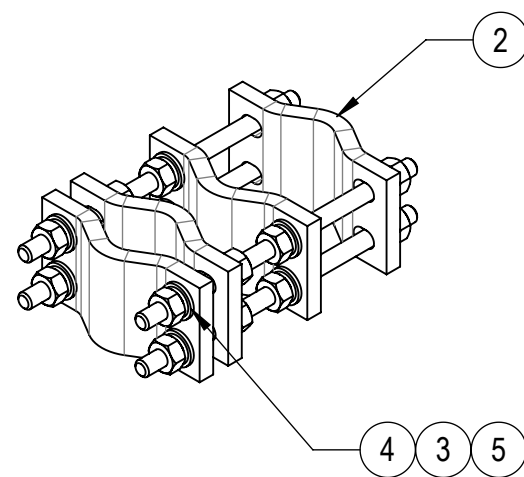
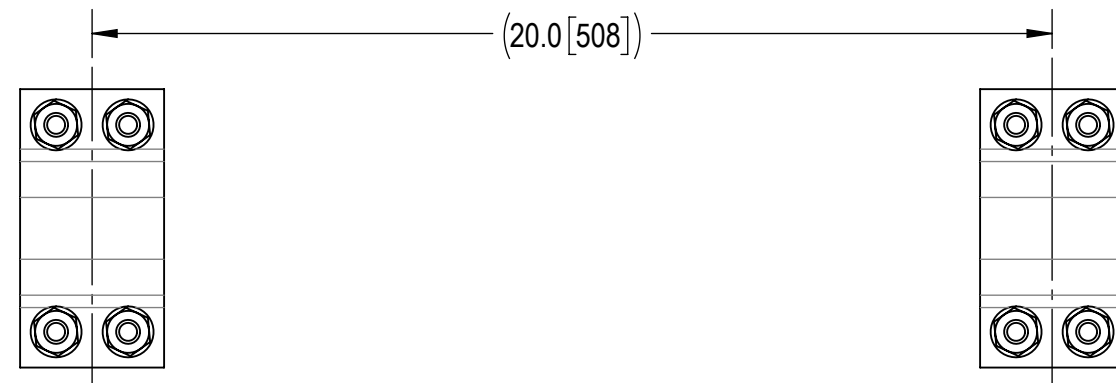
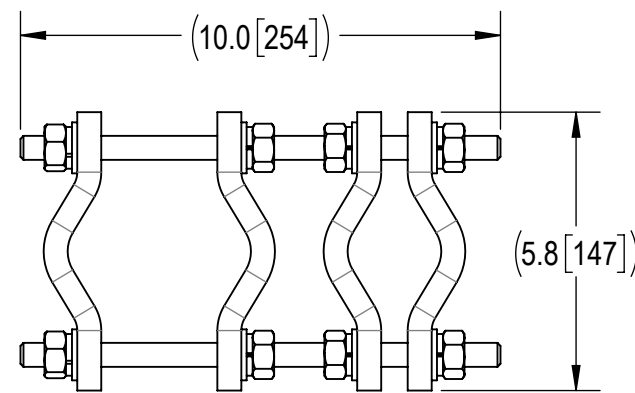
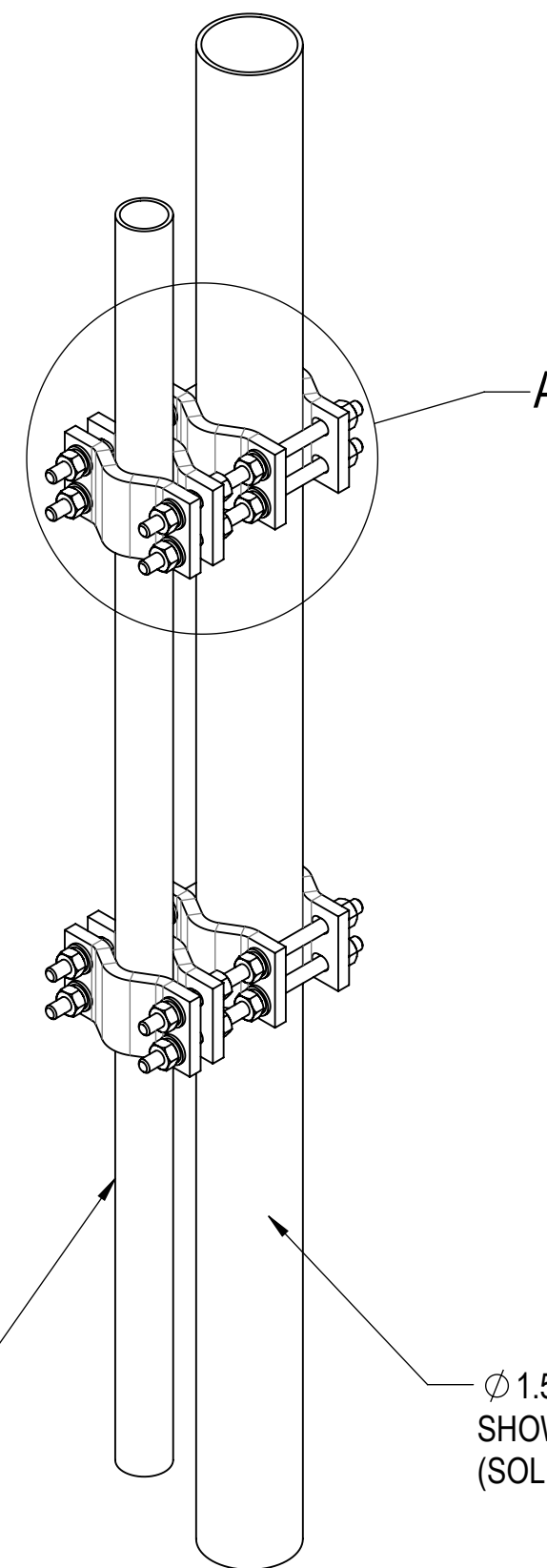


- 1.0 GENERAL NOTES
 1.1 ALL METRIC DIMENSIONS ARE IN BRACKETS [X. X]
 1.2 FOR PATENT INFO: <https://www.cs-pat.com>
 2.0 DESIGN NOTES
 2.1 ANY HAZARDS OR OBSTRUCTIONS TO THE CLIMBING FACILITY AND SAFETY CLIMB MUST BE IDENTIFIED PRIOR TO INSTALLING THE APPURTENANCE. ADDITIONAL PRODUCTS MAY BE REQUIRED TO MAINTAIN THE INTEGRITY OF THE SAFETY CLIMB. DURING INSTALLATION, TEMPORARY AND/OR PERMANENT PRECAUTIONARY MEASURES SHOULD BE TAKEN TO PRESERVE THE CLIMBING FACILITY AND/OR SAFETY CLIMB.
 3.0 MANUFACTURING/SPECIAL REQUIREMENTS
 3.1 TIGHTEN ALL BOLTS SECURING FLAT PLATES BY THE TURN-OF-NUT METHOD. TIGHTEN ALL U-BOLTS USING TURN-OF-NUT METHOD WITH ATTENTION TO LEAVE EQUAL DISTANCE AND EQUAL FORCE ON EACH LEG OF THE U-BOLT.
 4.0 TEST
 5.0 PACKAGING
 5.1 PACKAGING SHALL MEET COMMSCOPE REQUIREMENTS PER DOCUMENT IS-PL-3005
 5.2 PRINTED DOCUMENT TO BE PLACED INSIDE POLYBAG AND THEN IN SHIPPING CONTAINER
 5.3 EXTRA HARDWARE MAY BE SUPPLIED, BAGGED AND SHIPPED

REVISIONS			
REV.	DESCRIPTION	DATE	APPROVED
A	INITIAL RELEASE	MSM 15JUN12	TP
B	CHG BOM; ADD PACK	CEB 17MAR16	TP
C	UPDATED DRAWING FORMAT	LL1090 18JUL24	BA1025 40200499CMO



DETAIL A
SCALE 1 : 3



$\phi 1.5'' \text{ TO } \phi 3.5''$ O.D. PIPE
SHOWN FOR REFERENCE
(SOLD SEPARATELY)

$\phi 1.5'' \text{ TO } \phi 3.5''$ O.D. PIPE
SHOWN FOR REFERENCE
(SOLD SEPARATELY)

COMPONENT PART NUMBERS PROVIDED FOR ASSEMBLY PURPOSES;
INDIVIDUAL COMPONENTS MAY BE SHIPPED AS PARTS WITHIN AN INCLUDED KIT.

ITEM NO.	PART NUMBER	DESCRIPTION	QTY.	WEIGHT	NOTE NO.
1	MT37910	1/2" X 10" GALV THREADED ROD	8	0.55 LBS	
2	SC-P10D	SMALL DISH DUAL HALF CLAMP	8	2.40 LBS	
3	GWL-04	1/2" GALV LOCK WASHER	32	0.01 LBS	
4	GWFO4A	1/2" GALV FLAT WASHER (A325)	32	0.02 LBS	
5	GN-04A	1/2" GALV HEX NUT (A194 2H)	32	0.07 LBS	

DENSITY	26.74	lbs/in ³
MASS	26.74	lbs
VOLUME	94.83	in ³
SURFACE AREA	700.63	in ²
HEIGHT	23.0"	
LENGTH	10.0"	
WIDTH	5.8"	

© 2024 CommScope, Inc. Confidential

COMMSCOPE, INC. OF NORTH CAROLINA												
TOLERANCES						SAP MATERIAL MASTER						
1 PLACE .X[X] ± 0.25[6.3]			3 PLACE .XXX[X] ± 0.06[1.5]			BC-30-10D						
2 PLACE .XX[X] ± 0.12[3.0]			ANGLES ± 2°									
FINISH						MATERIAL						
PIPE-TO-PIPE CLAMP, 1-1/2" - 3-1/2"												
SCALE 1:4 DOCUMENT NO. BC-30-10D												
ECN 40200499CMO												
SIZE		Auth Group		INSL		MODEL			DRAWING			SHEET
C		⊕		◁		VERSION			STATUS			REVISION
01		RE		C		01			RE			C
1 OF 1												