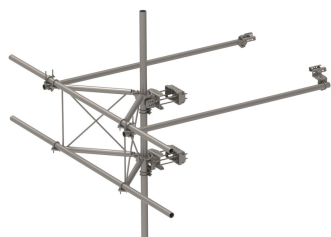


# SFG22RHDX-13-B



G22RHDX Tower Sector Frame with spine extension for RRU Mounting, 13 ft x 2.88 in OD face pipes. Base Kit Only. No antenna pipes.

- Extended spine for SFG22 RHDX mounts that decrease PIM from radio relocation
- Increased versatility and stability
- Updated frame provides higher loading
- More RRU mounting available, reducing need for additional mounts
- Better load management
- Less structure stress
- Can be used in combination with APEX RRU mounts

## Product Classification

Product Type	High capacity Tower sector frame
Product Brand	PIM-guard
Product Series	G2

## General Specifications

Mounting	Angle 60°, 203.2 mm (8 in)   Straight or tapered legs up to 203.2 mm (8 in) OD
Patent Number	Patent pending
Pipe, quantity	0
Sectors, quantity	1
Tower Taper	Non-tapered   Tapered

## Dimensions

Face Width	3.962 m   13 ft
Width	3,962.4 mm   156 in
Face Support Pipe Diameter	73.025 mm   2.875 in
Mounting Diameter, maximum	218.44 mm   8.6 in
Mounting Diameter, minimum	38.1 mm   1.5 in
Pipe Outer Diameter	73.025 mm   2.875 in
Stand-off Distance	1,066.8 mm   42 in

## Material Specifications

# SFG22RHDX-13-B

**Material Type** Hot dip galvanized steel

## Mechanical Specifications

**Wind Rating** For Specifications, please contact your local ANDREW representative

## Packaging and Weights

**Included** Frame | Stiff arms (2) | Tower attachment

**Packaging quantity** 1

## Regulatory Compliance/Certifications

Agency	Classification
CHINA-ROHS	Above maximum concentration value
ROHS	Compliant/Exempted
UK-ROHS	Compliant/Exempted



## \* Footnotes

**Wind Rating** BWS—Base Wind Speed; FBC—Florida Building Code