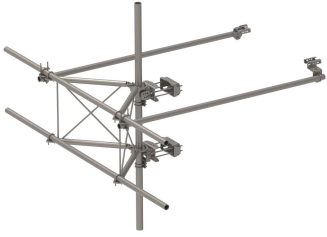


SFG23RHDX-15-B



G23RHDX Tower Sector Frame with spine extension for RRU Mounting, 15 ft x 2.88 in OD face pipes. Base Kit Only. No antenna pipes.

- Extended spine for SFG23 RHDX mounts that decrease PIM from radio relocation
- Increased versatility and stability
- Updated frame provides higher loading
- More RRU mounting available, reducing need for additional mounts
- Better load management
- Less structure stress
- Can be used in combination with APEX RRU mounts

Product Classification

Product Type	High capacity Tower sector frame
Product Brand	PIM-guard
Product Series	G2

General Specifications

Mounting	Angle 60°, 203.2 mm (8 in) Straight or tapered legs up to 203.2 mm (8 in) OD
Patent Number	Patent pending
Pipe, quantity	0
Sectors, quantity	1
Tower Taper	Non-tapered Tapered

Dimensions

Face Width	4.572 m 15 ft
Width	4,572 mm 180 in
Face Support Pipe Diameter	73.025 mm 2.875 in
Mounting Diameter, maximum	218.44 mm 8.6 in
Mounting Diameter, minimum	38.1 mm 1.5 in
Pipe Outer Diameter	73.025 mm 2.875 in
Stand-off Distance	1,066.8 mm 42 in

Material Specifications

SFG23RHDX-15-B

Material Type Hot dip galvanized steel

Mechanical Specifications

Wind Rating For Specifications, please contact steelproducts@commscope.com or call 800-255-1479

Packaging and Weights

Included Frame | Stiff arms (2) | Tower attachment

Packaging quantity 1

Weight, net 312.072 kg | 688 lb

Regulatory Compliance/Certifications

Agency	Classification
CHINA-ROHS	Above maximum concentration value
ROHS	Compliant/Exempted
UK-ROHS	Compliant/Exempted



* Footnotes

Wind Rating BWS—Base Wind Speed; FBC—Florida Building Code