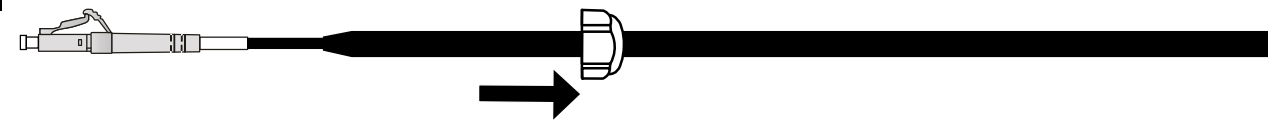


**FA-FWS-E-250 Installation for
HELIAX[®] Fiber Solutions**

Bulletin 7713114 Revision F Page 1 of 2

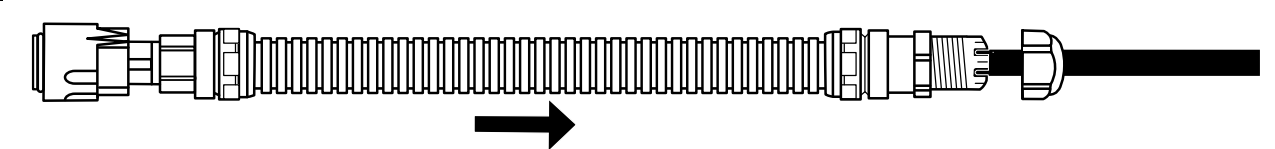
Note: If Weatherproofing Shroud has been factory installed skip to step 5

1



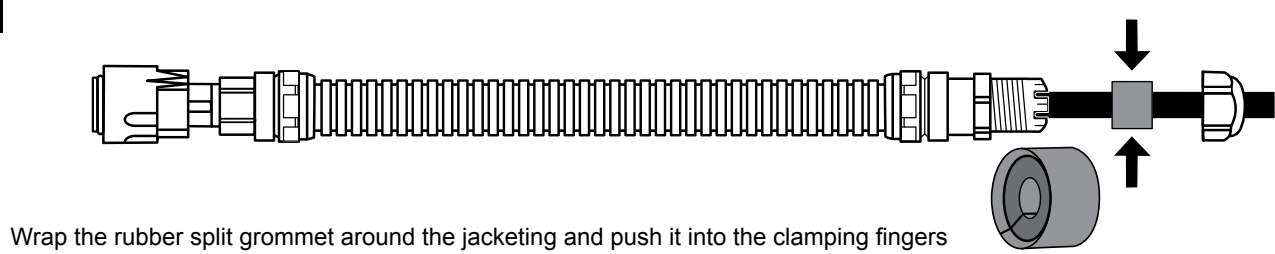
Carefully feed compression nut over DLC connector and slide onto jacketing. **Do not twist or bend the DLC connector or fiber. Excessive force or bending may break the fiber.**

2



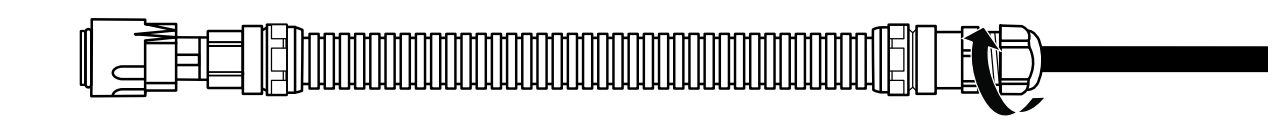
Straighten the sleeve and feed the fiber connector into the sleeve until the DLC connector is even with the RRU end.

3



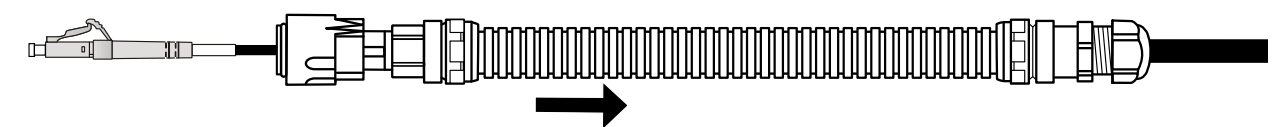
Wrap the rubber split grommet around the jacketing and push it into the clamping fingers until flush with the end.

4

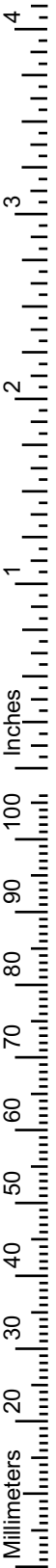


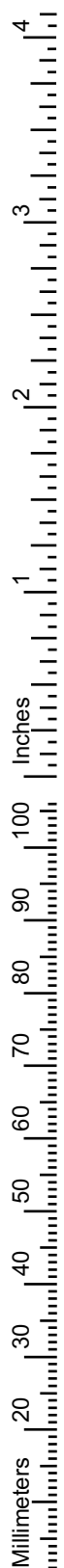
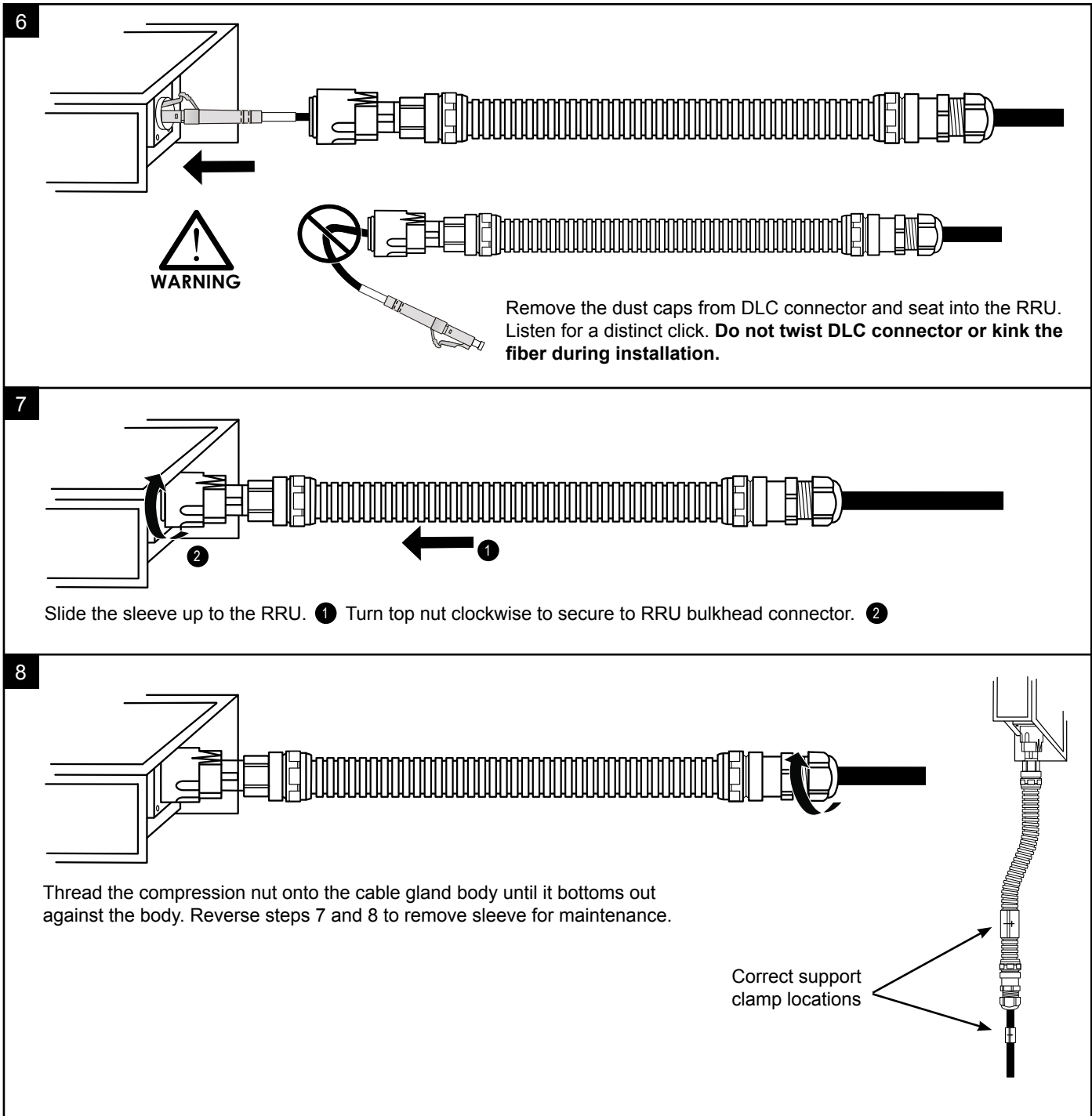
Engage the compression nut four full revolution to keep the grommet in place but **do not tighten** fully to allow for adjustment during RRU connection.

5



Slide sleeve down jacketing to allow access to the DLC connector. **Do not pull** the DLC connector through the sleeve or damage may occur.





ANDREW an Amphenol company
 2601 Telecom Parkway, Richardson, Texas, 75082, USA
 www.andrew.com

Technical Support
 +1 888 297 6433, Option 3 (Toll Free US and Canada)
 awpnarsupport@andrew.com

Notice: ANDREW disclaims any liability or responsibility for the results of improper or unsafe installation, inspection, maintenance, or removal practices.
 Aviso: ANDREW no acepta ninguna obligación ni responsabilidad como resultado de prácticas incorrectas o peligrosas de instalación, inspección, mantenimiento o retiro.
 Avis: ANDREW décline toute responsabilité pour les conséquences de procédures d'installation, d'inspection, d'entretien ou de retrait incorrectes ou dangereuses.
 Hinweis: ANDREW lehnt jede Haftung oder Verantwortung für Schäden ab, die aufgrund unsachgemäßer Installation, Überprüfung, Wartung oder Demontage auftreten.
 Atenção: A ANDREW abdica do direito de toda responsabilidade pelos resultados de práticas inadequadas e sem segurança de instalação, inspeção, manutenção ou remoção.
 Avvertenza: ANDREW declina eventuali responsabilità derivanti dall'esecuzione di procedure di installazione, ispezione, manutenzione e smontaggio improprie o poco sicure.
 注意: ANDREW 公司申明對於不恰當或不安全的安裝、檢驗、維修或拆卸操作所導致的後果不負責任 何義務和責任