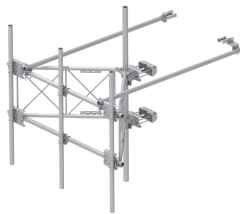


# SFG22RHDXL9-3-96



G22RHDXL PIM OPTIMIZED SPACING High Capacity Sector Frame with extended 10' Spine for RRU Mounting & extended frame for sites requiring increased sector to sector antenna spacing. 2 7/8in OD x 9ft face with (3) 2-7/8in OD x 96in Antenna pipes

- Extended spine for SFG22 RHDX mounts that decrease PIM from radio relocation plus extended stand-off frame
- Increased versatility and stability
- Updated frame provides higher loading
- More RRU mounting available, reducing need for additional mounts
- Better load management
- Less structure stress
- Can be used in combination with APEX RRU mounts

## Product Classification

Product Type	High capacity Tower sector frame
Product Brand	PIM-guard
Product Series	G2

## General Specifications

Mounting	Angle 60°, 203.2 mm (8 in)   Straight or tapered legs up to 203.2 mm (8 in) OD
Patent Number	Patent pending
Pipe, quantity	3
Sectors, quantity	1
Tower Taper	Non-tapered   Tapered

## Dimensions

Height	2,438.4 mm   96 in
Face Width	2.743 m   9 ft
Width	2,743.2 mm   108 in
Pipe Length	2,438.4 mm   96 in
Face Support Pipe Diameter	73.025 mm   2.875 in
Mounting Diameter, maximum	218.44 mm   8.6 in
Mounting Diameter, minimum	38.1 mm   1.5 in
Pipe Outer Diameter	73.025 mm   2.875 in

# SFG22RHDXL9-3-96

---

**Stand-off Distance** 1,549.4 mm | 61 in

## Material Specifications

**Material Type** Hot dip galvanized steel

## Mechanical Specifications

**Wind Rating** For Specifications, please contact your local ANDREW representative

## Packaging and Weights

**Included** Antenna mounting pipes | Crossover plates | Frame | Stiff arms (2) | Tower attachment

**Packaging quantity** 1

**Weight, net** 353.965 kg | 780.36 lb

## \* Footnotes

**Wind Rating** BWS—Base Wind Speed; FBC—Florida Building Code