

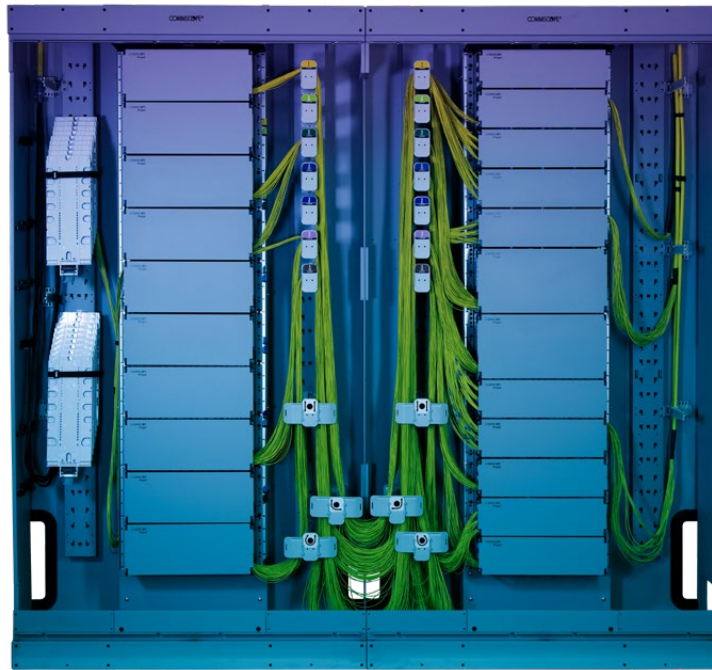
COMMSCOPE®



Propel XFrame™



Radically Flexible, Remarkably Simple



Inside data centers and high-performance computing (HPC) facilities, AI deployments and high-density fiber mesh architectures are having a significant impact on infrastructures. Fiber counts are quickly exceeding the capacity of standard rack-and-shelf fiber frames.

Network managers are turning to high-capacity floor-mounted fiber frames, only to discover that most are proprietary solutions that lack interoperability and require skilled technicians to install and manage. As available data center space becomes more valuable, the bulky, inflexible footprint of these frames is a liability.

For data centers to keep pace with the fiber-intensive demands of AI, network managers must break free from the confines of proprietary floor-mounted frames. Now they can with the new Propel XFrame™ fiber frame.

The Propel XFrame solution is a radical departure from rigid and proprietary frames. Simplified and streamlined, agile and open, it enables faster, more flexible deployment and management of high-density environments while optimizing your space and internal resources.

THE DIALOGUE OF INNOVATION

The Propel XFrame fiber frame is the product of an on-going collaboration between the CommScope solutions team and our customers. For nearly 40 years, that dialogue has focused on their challenges and our commitment to addressing them. When we asked customers to define their biggest fiber deployment bottlenecks, many—if not most—pointed to their fiber frames.

“I need more flexibility in how I manage change in my fiber network.”

As the speed of moves, adds and reconfigurations increases, installation teams are hampered by the proprietary nature of their fiber frames, including interoperability issues with non-OEM components.

“I can’t afford to sacrifice fiber density for manageability.”

It doesn’t matter how much fiber a frame can hold if the fiber isn’t manageable. The more complex the frame, the higher the risk of human error, mislabeled ports and poorly terminated connections.

“We need to minimize the drain on our people and budget.”

Complex fiber frames require teams of skilled technicians to deploy and manage them. With fewer skilled workers available, the cost and time to deploy and manage conventional fiber frames increase.

“How can we make better use of our available white space?”

Data Center space equals revenue. Existing fiber frames have limited deployment flexibility, impeding the ability to optimize and monetize

“Can you simplify the design without reducing the functionality?”

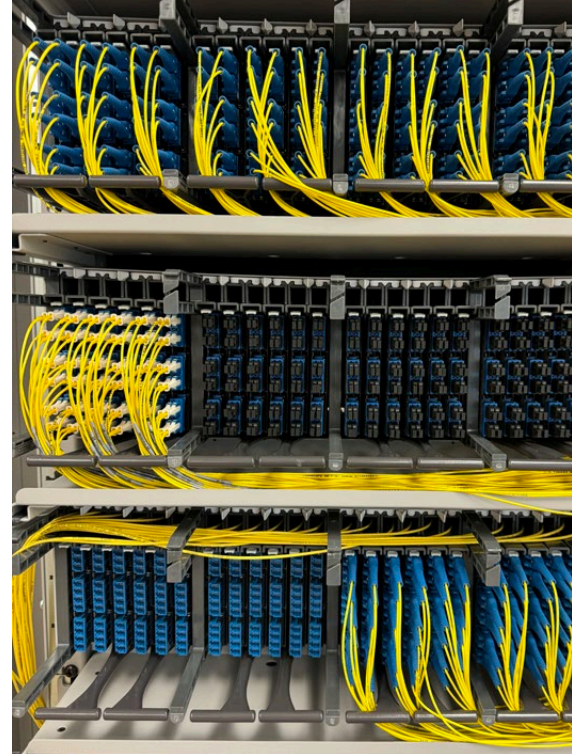
The cost of complexity includes ordering and managing dozens of SKUs, training technicians on OEM-specific processes, and having to rip and replace for component compatibility. You want it to be straightforward and easy but not light. We get it.

PROPEL XFRAME

Simplified, agile and open

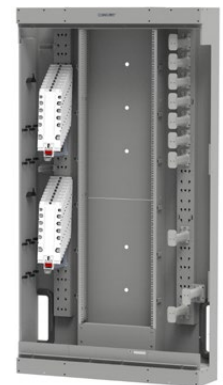
The modular Propel XFrame solution supports Propel™ modules and adapters. It accepts multiple connector types and up to 1,920 LC duplex, 3,072 SN duplex or 1,920 MPO connectors.

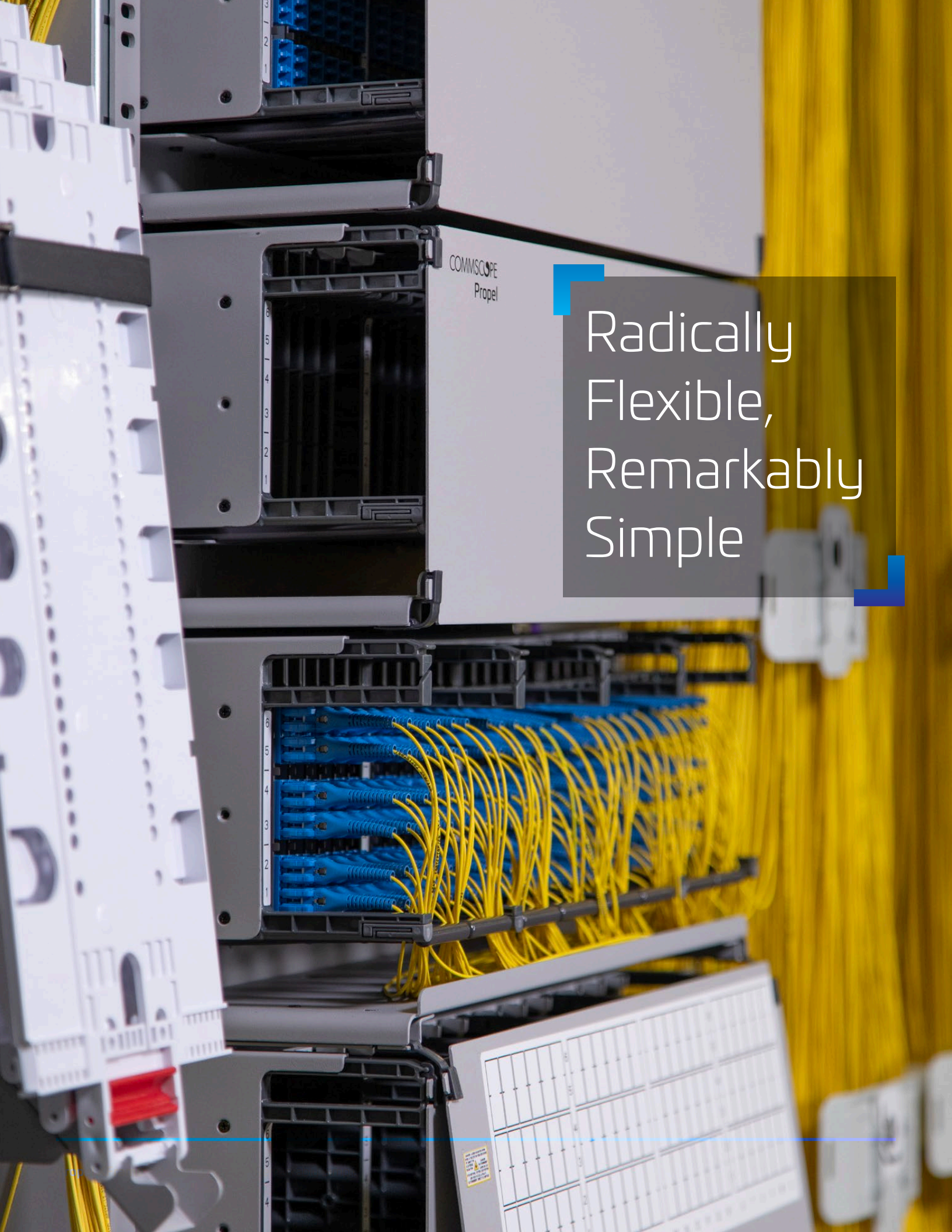
Its simple layout and operation enable non-skilled technicians to easily and quickly add, change, reroute and reconfigure fiber connections, breakout assemblies and panel components as needed. With a completely modular design, it also significantly reduces the number of SKUs that need to be ordered and managed.



Propel XFrame solution at a glance

- Low profile: 30 cm/11.8 in (d)
120 cm/47.2 in (w)
222.8 cm/87.7 in (h)
- 3U, 4U and 5U fixed front access panels
- Place against a wall, back-to-back or free-standing
- Uses Propel modules and cassettes
- Horizontal or vertical cable management
- Options: Lockable doors, side panels, splicing, troughs
- Single patch cord length
- Supports preterminated breakout assembly and splicing
- Accommodates up to 1,920 LC duplex, 3,072 SN duplex or 1,920 MPO connectors
- Accepts duplex LC/SN and MPO8 - MPO16 connectors





COMMScope
Propel

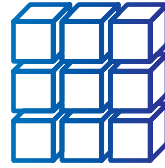
Radically
Flexible,
Remarkably
Simple

UNLOCK YOUR FIBER POTENTIAL



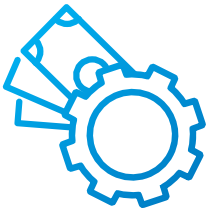
Expand your options

The Propel XFrame solution is powered by Propel technology and designed to maximize the use of industry standardized components and panels. The standard 19-inch frame supports multiple standardized connector types, including duplex LC/SN and MPO8 to MPO16.



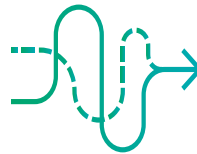
Improve density management

The Propel XFrame solution offers 3U-, 4U- and 5U-panel options that accommodate up to 1,920 LC duplex, 3,072 SN duplex or 1,920 MPO connectors. It also accepts simplified, high-density Propel modules and cassettes and standardized connectors, including MPO 8-16, MPO patch cords and MPO adapter packs. With horizontal and vertical cable management and built-in patch cord routing guidance via color-coded spools, all that density is surprisingly manageable.



Reduce labor costs

The Propel XFrame solution is a full-featured data center fiber frame that doesn't require detailed knowledge and experience to deploy and manage. It provides front access to all panels, uses single-length patch cords and supports preterminated breakout assemblies and splicing. Horizontal and vertical cable management keeps all cabling organized for faster, more accurate moves, adds and changes.



Simplify ordering

Streamlined and modular, the Propel XFrame solution requires a minimum number of SKUs, helping you reduce ordering errors and inventory costs. For example, the Propel XFrame solution features a standard 19-inch frame, single-length patch cords and one MID (left or right side) that enables multiple deployment configurations. And you can use most of your existing Propel modules or cassettes to save even more.



Optimize your data center space

With a low profile and multiple deployment configurations, the Propel XFrame solution enables you to optimize your available data center space. The standard 19-inch frame measures just 300 mm deep while the modular configuration can be deployed against a wall, back-to-back or as a free-standing frame, thanks to the front access for trunk cables and patch cords.



Global availability

Whereas most fiber frames have limited distribution, the Propel XFrame fiber frame is globally available when and where you need it. So, you can accelerate the turnup of new facilities or quickly upgrade your existing fiber connectivity for a faster return on your investment.

PROPEL XFRAME ORDERING INFORMATION

Frame options

MID	Catalog Number	Detailed Description
760258350	PPL-FRAME-KT	Propel Frame without Doors. Includes Frame components with spools & back panels; no doors or side panels, 40RU
760258349	PPL-FRAME-KT-WDRS	Propel Frame with Doors. Includes Frame components with spools, back panels & 2 locking doors with keys; no side panels, 40RU



Panel options

VCM (Vertical Cable Management) panels: With VCM panels, patch cords are routed straight down to a trough and then over. This provides finger access for Moves, Adds and Changes

MID	Catalog Number	Detailed Description
760258355	PPL-FA-4U-VCM	Propel Front Access Panel, 4RU, Vertical Cable Management. For use with 12f Propel components, 24 per panel
760258357	PPL-FA-5U-VCM	Propel Front Access Panel, 5RU, Vertical Cable Management. For use with 8f, 48 per panel or 16f, 24 per panel Propel components



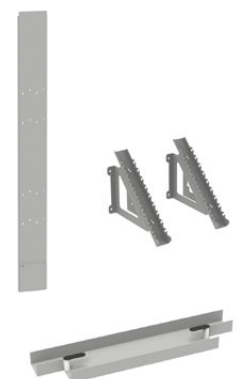
HCM (Horizontal Cable Management) panels: HCM panels maximize density within the frame. Patch cords are routed across the front of the frame providing maximum frame density

MID	Catalog Number	Detailed Description
760258354	PPL-FA-3U-HCM	Propel Front Access Panel, 3RU, Horizontal Cable Management. For use with 12f Propel components, 24 per panel
760258356	PPL-FA-4U-HCM	Propel Front Access Panel, 4RU, Horizontal Cable Management. For use with 8f, 48 per panel or 16f, 24 per panel Propel components



Accessories

MID	Catalog Number	Detailed Description
760258348	PPL-FRAME-SPLC-KT	Propel Frame Splicing Kit. For in bay bulk splicing. Includes 2 Splice Tree assemblies with fasteners and side panel radius limiters/clips. Splice trays sold separately.
760258367	PPL-FRAME-SDPNL-KT	Propel Frame Side Panel Kit. Includes 2 Side Panel assemblies with fasteners
760258368	PPL-FRAME-TROUGH-KT	Propel Frame Top Trough. For routing fibers across the top of the frame to another adjacent Propel XFrame Includes Top Trough assembly with fasteners
FGS-HCTS-A/B	FGS-HCTS-A/B	FiberGuide® Adjustable Top of Frame Bracket Kit, 4x4, 2x6, 4x6in, Black
760243050	FOST-ACC-D-TRAY-RR-288-KIT	288 fiber splicing tray



Recommended patch cord length of 5 meters and trunk cable breakout length of 60 inches

Propel XFrame modules

Propel XFrame can use 8 fiber, 12 fiber and 16 fiber Propel Modules, Propel Adapter Packs, Propel Splice Cassettes and Propel Cabled Modules (CMODs). [Please refer to the Propel ordering guide for more information.](#)

CommScope pushes the boundaries of communications technology with game-changing ideas and ground-breaking discoveries that spark profound human achievement. We collaborate with our customers and partners to design, create and build the world's most advanced networks. It is our passion and commitment to identify the next opportunity and realize a better tomorrow.



[commscope.com](https://www.commscope.com)

Visit our website or contact your local CommScope representative for more information.

© 2025 CommScope, LLC. All rights reserved. CommScope and the CommScope logo are registered trademarks of CommScope and/or its affiliates in the U.S. and other countries. For additional trademark information see <https://www.commscope.com/trademarks>. All product names, trademarks and registered trademarks are property of their respective owners.

BR-119738.1-EN (03/25)