

Mid-Tier Vertical Cable Management (VCM) Kit Instructions

1. General product information

The mid-tier vertical cable management (VCM) kits are installed on the side of a 19-inch or 23-inch (483 or 584mm) wide industry standard rack. The kits are available in a single-sided & double-sided version and black & white color and provide a concealed vertical space for organizing patch cables. Optional cable spools are available to organize longer patch cable lengths. The cable managers are available in 6-inch (152mm) and 8-inch (203mm) widths and in an 84-inch (2.1m) height.

Ordering information is listed below:

Material ID	Part No.	Description
760260759	VCM-SS-84-6B-TD	6" x 84" (152mm x 2.1m) VCM single-sided mid-tier kit with covers, Black
760260760	VCM-SS-84-8B-TD	8" x 84" (203mm x 2.1m) VCM single-sided mid-tier kit with covers, Black
760260761	VCM-DS-84-6B-TD	6" x 84" (152mm x 2.1m) VCM double-sided mid-tier kit with covers, Black
760260762	VCM-DS-84-8B-TD	8" x 84" (203mm x 2.1m) VCM double-sided mid-tier kit with covers, Black
760260763	VCM-SS-84-6W-TD	6" x 84" (152mm x 2.1m) VCM single-sided mid-tier kit with covers, White
760260764	VCM-SS-84-8W-TD	8" x 84" (203mm x 2.1m) VCM single-sided mid-tier kit with covers, White
760260765	VCM-DS-84-6W-TD	6" x 84" (152mm x 2.1m) VCM double-sided mid-tier kit with covers, White
760260766	VCM-DS-84-8W-TD	8" x 84" (203mm x 2.1m) VCM double-sided mid-tier kit with covers, White

2. How to Contact Us

- To find out more about CommScope® products, visit us on the web at <http://www.commscope.com/>
- For technical assistance:
 - Within the United States, contact your local account representative or technical support at 1-800-344-0223. Outside the United States, contact your local account representative or Authorized Business Partner.
 - Within the United States, report any missing/damaged parts or any other issues to CommScope Customer Claims at 1-866-539-2795. Outside the United States, contact your local account representative or Authorized Business Partner.

3. Tools required

- 3/4" socket and driver

4. Parts List

Verify parts against the parts list below:

Quantity		Description
Single-sided	Double-sided	
1	1	Vertical cable management trough
2	4	Covers
1	1	Hardware kit*

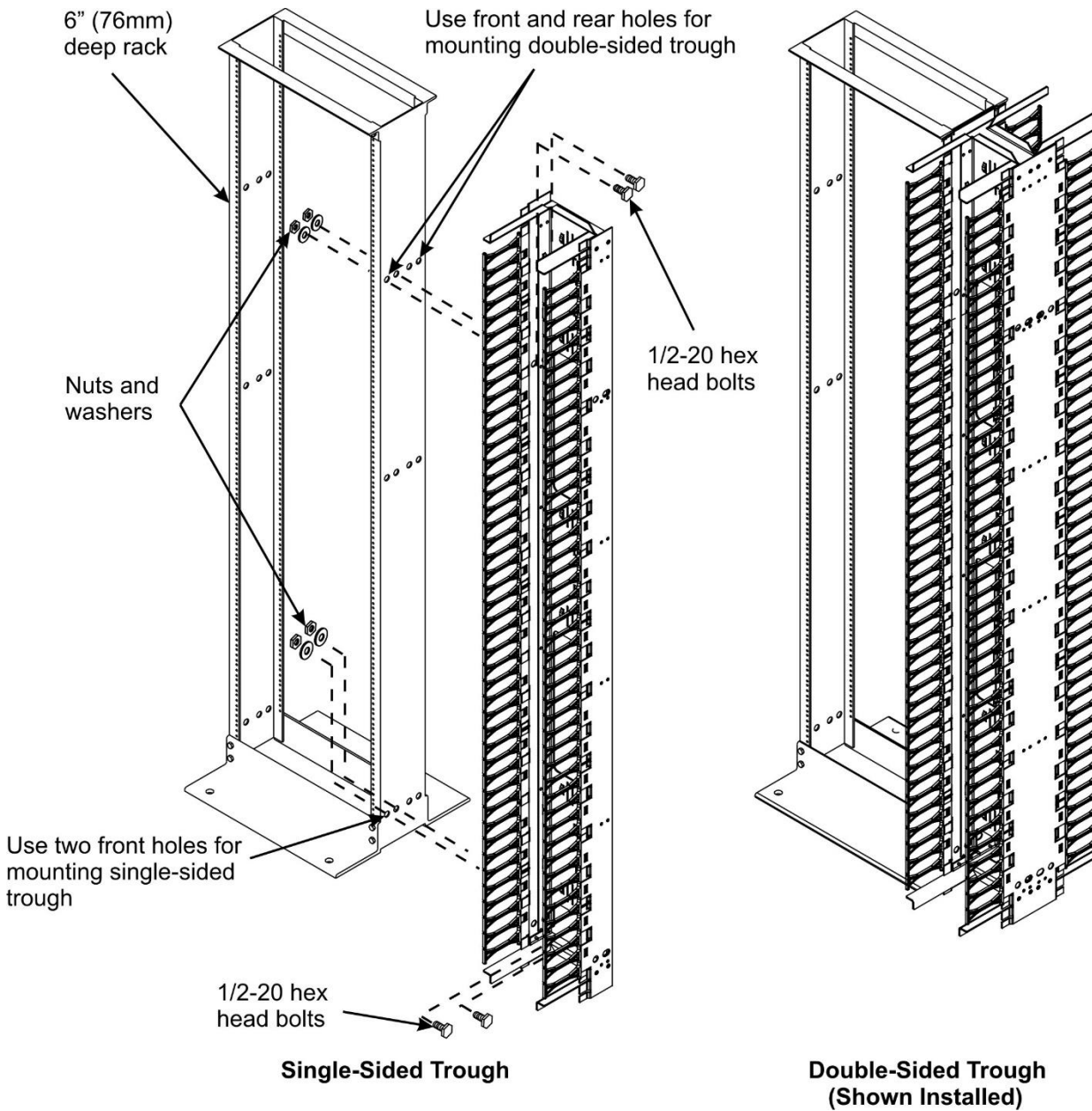
*Hardware kit contains four 1/2"-20 x 1" hex head cap bolts, four hex nuts, and four washers

5. Separately Orderable Parts

Material ID	Description
760244861	Spool kit (2 spools)
760136531	Hardware kit

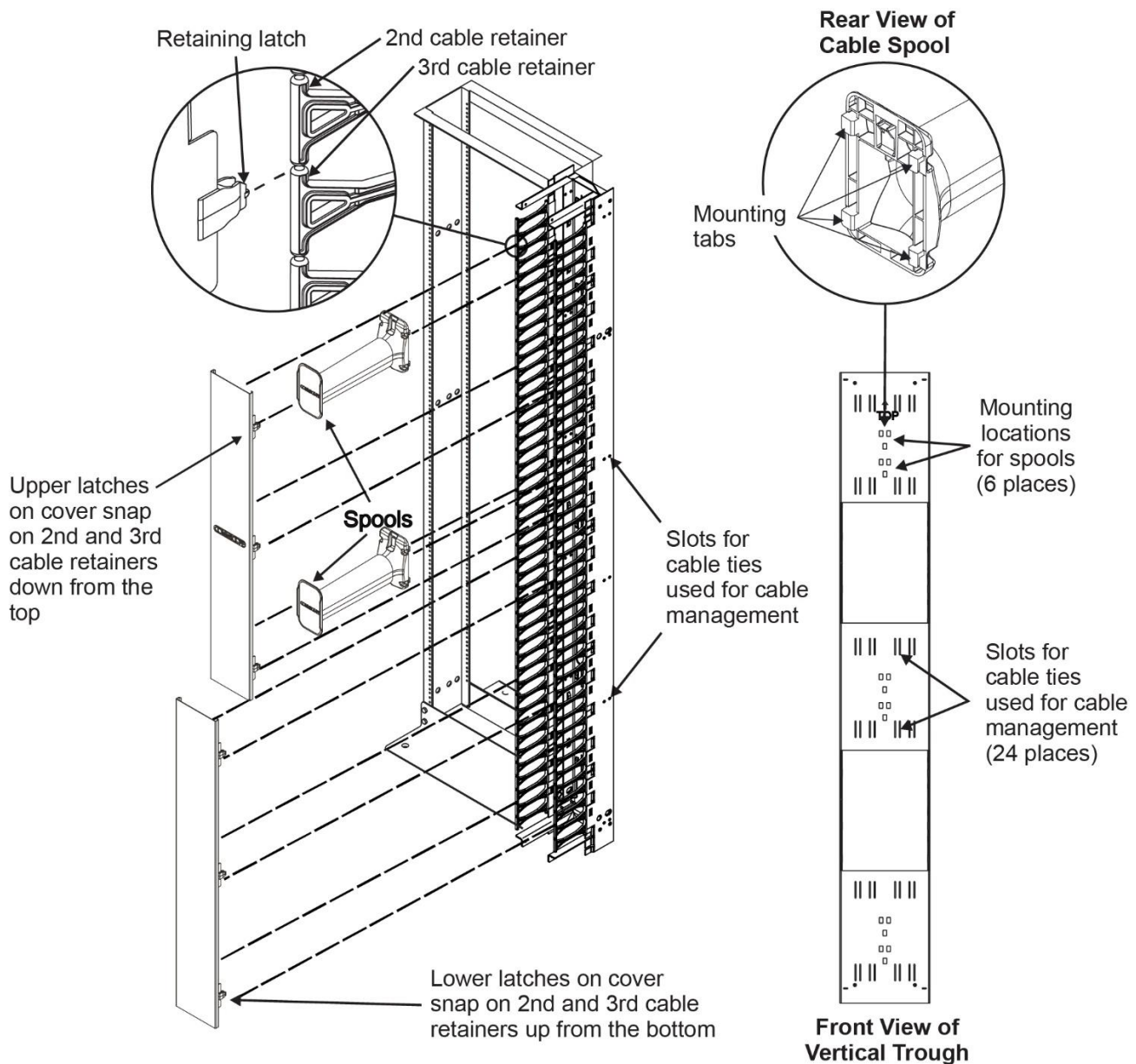
6. Installation steps

Step 1 – Install VCM Trough to Rack

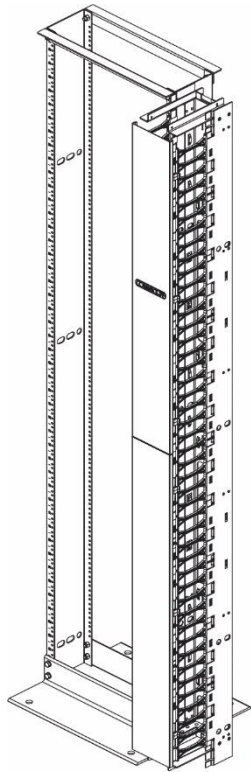


1. Position vertical cable management trough next to rack. On a 6-inch (76mm) deep rack, locate front two holes at top and bottom of rack for installing a single-sided trough and the front and rear holes at top and bottom of rack for installing a double-sided trough (see above figure). Install the four 1/2-20 hex head bolts through the vertical cable management trough and rack and secure with the provided washers and nuts.

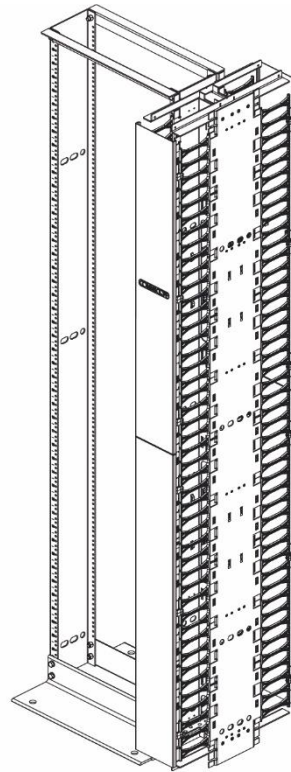
Step 2 – Install Cable Spools and Covers



1. Install cable spools (ordered separately) into vertical cable management trough by placing tabs, on rear of spool, into openings provided in back of the vertical cable management trough. Push down on spool until it snaps into place.
2. Install a cover on VCM by holding cover at retaining latches and guiding latches onto cable retainers until they snap in place. The latches should be centered between two cable retainers as shown above. To install upper cover, snap upper retaining latches to the 2nd and 3rd cable retainers from the top. Then, push in on lower two latches until cover is secured.
3. Repeat item 2 to install lower cover except snap lower retaining latches to the 2nd and 3rd cable retainers from the bottom first. Then, push in on upper two latches until cover is secured. If the unit is double-sided, repeat these steps to install covers on opposite side.

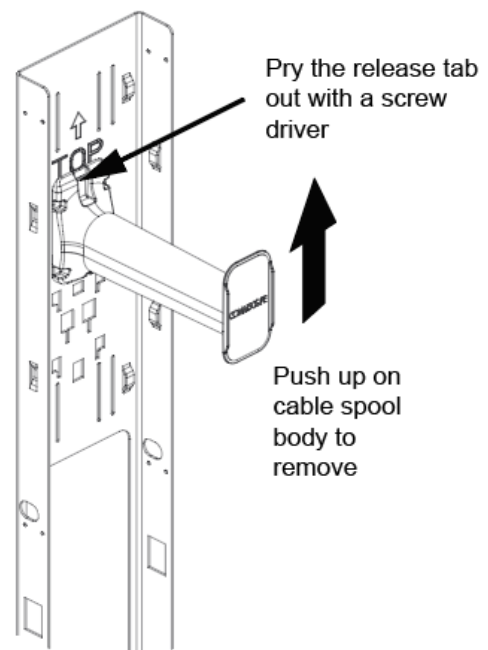
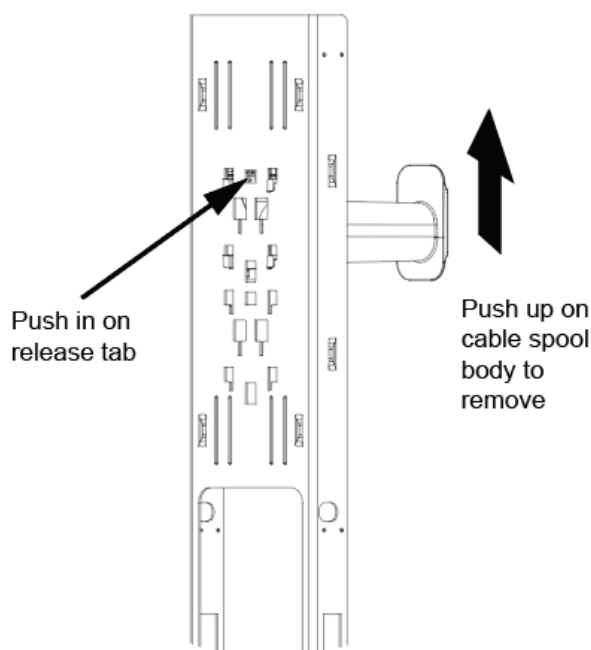


Single-Sided Trough

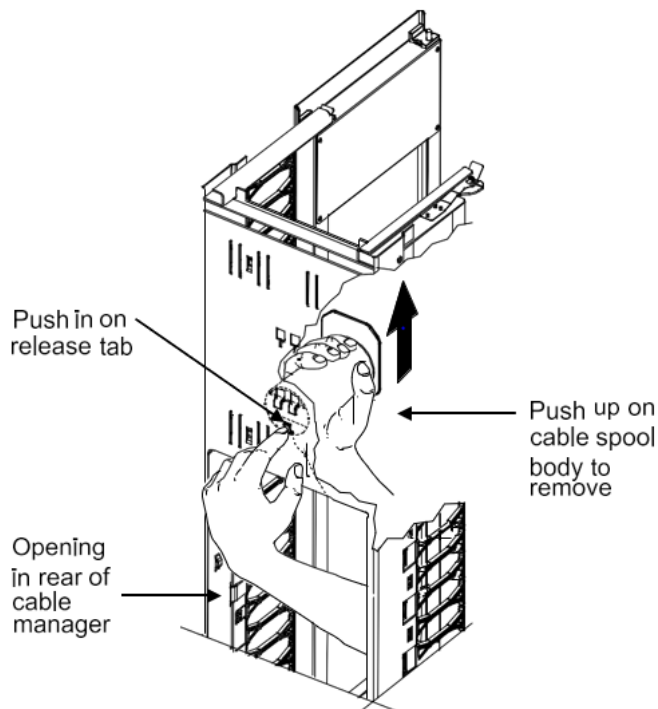
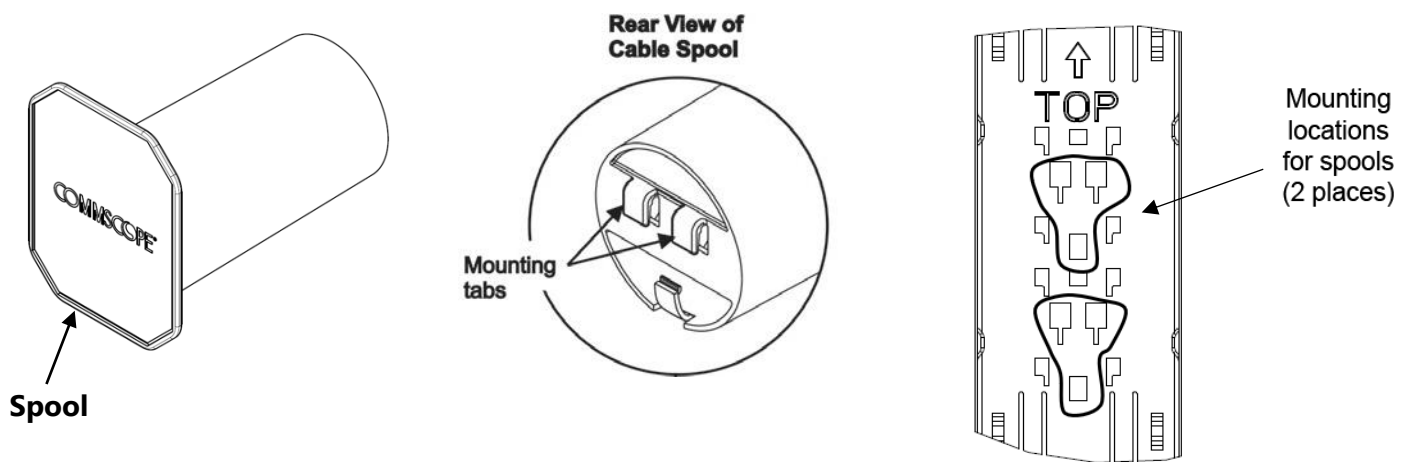


Double-Sided Trough

4. To remove a cable spool, extend one hand through the opening in rear of cable manager closest to the spool and push in on release tab on lower part of the spool as shown. (You could also pry the release tab out by a screw driver in the front side as shown). At the same time, push upward on body of cable spool until the latch release



5. The spool (MID:860402049) is also applicable, could be ordered as a spare kit.
Install it into vertical cable management trough by placing tabs, on rear of spool, into openings provided in back of the vertical cable management trough. Push down on spool until it snaps into place.
To remove it, extend one hand through the opening in rear of cable manager closest to the spool and push in on release tab on lower part of the spool as shown. At the same time, push upward on body of cable spool.
6. Install it into vertical cable management trough by placing tabs, on rear of spool, into openings provided in back of the vertical cable management trough. Push down on spool until it snaps into place.
To remove it, extend one hand through the opening in rear of cable manager closest to the spool and push in on release tab on lower part of the spool as shown. At the same time, push upward on body of cable spool



Spool release from vertical trough