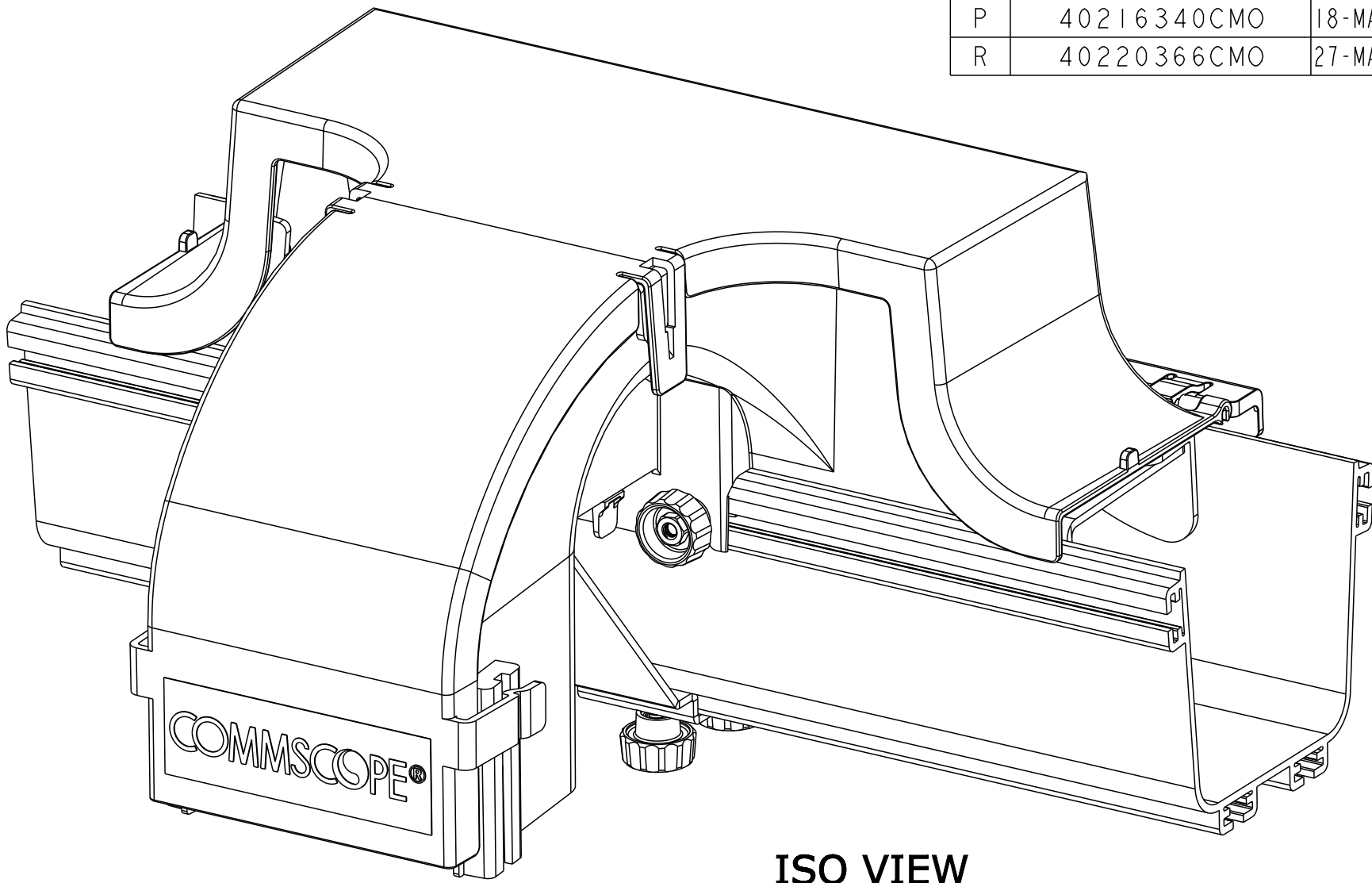
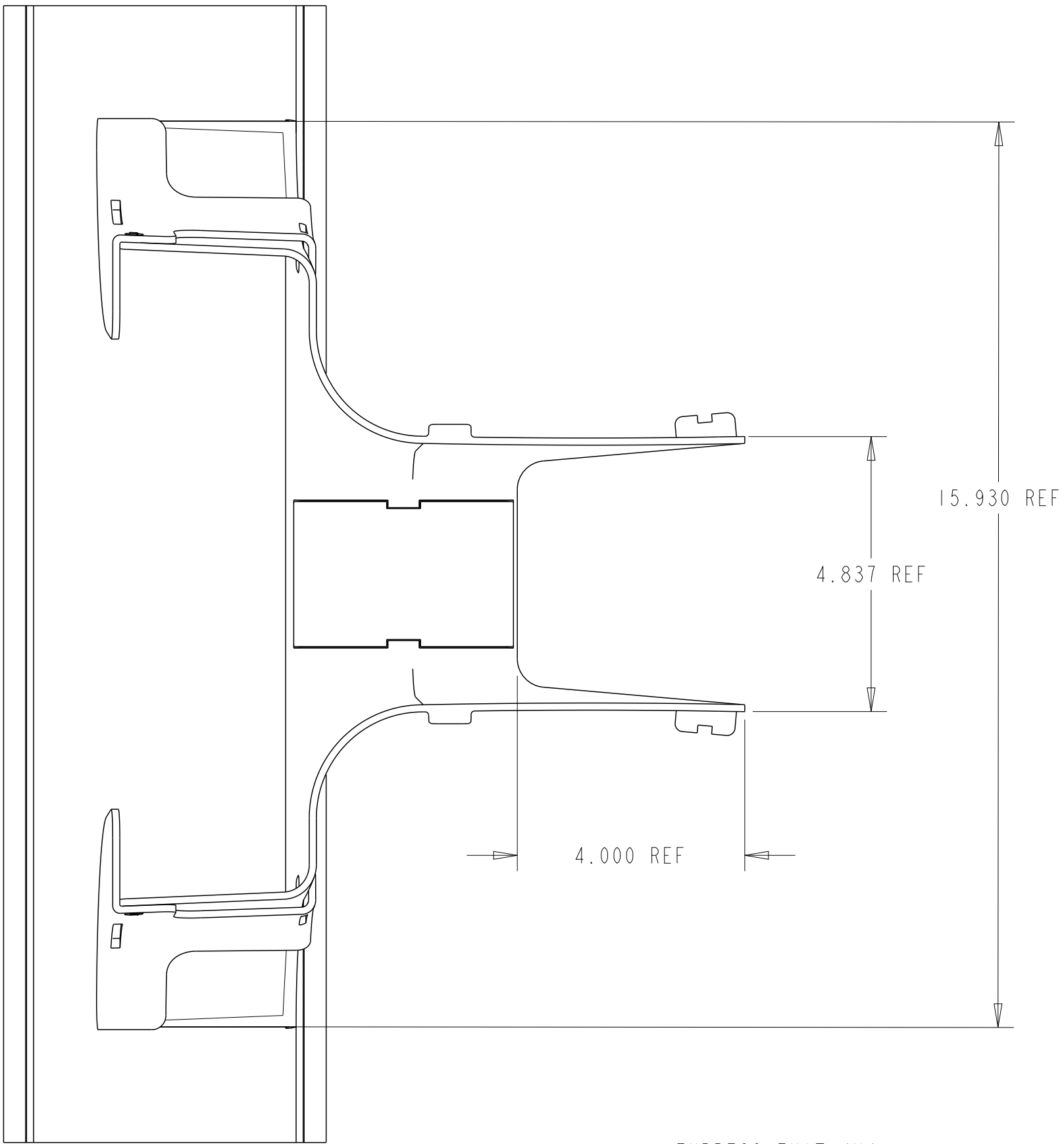


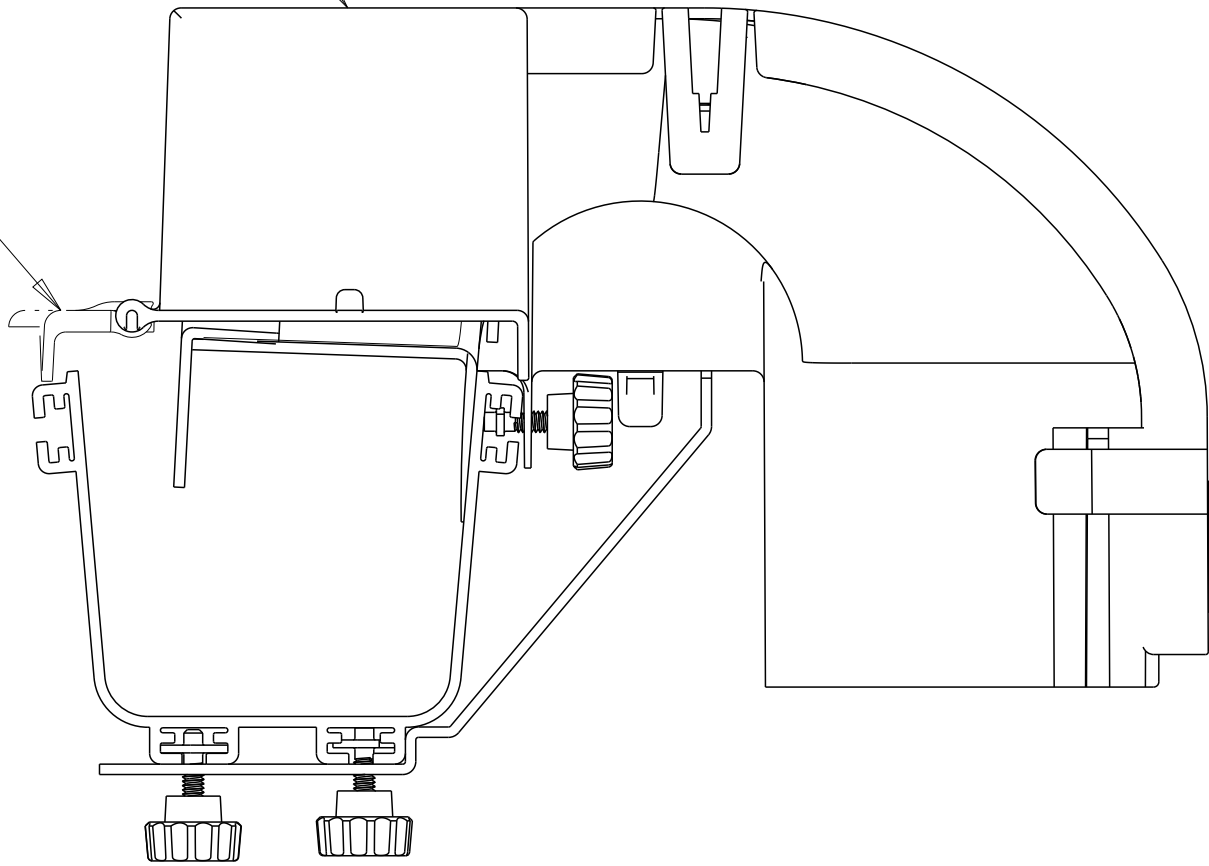
REVISIONS			
REV	CMO	DATE	APPROVED
P	40216340CMO	18-MAR-2025	RAT
R	40220366CMO	27-MAY-2025	FS



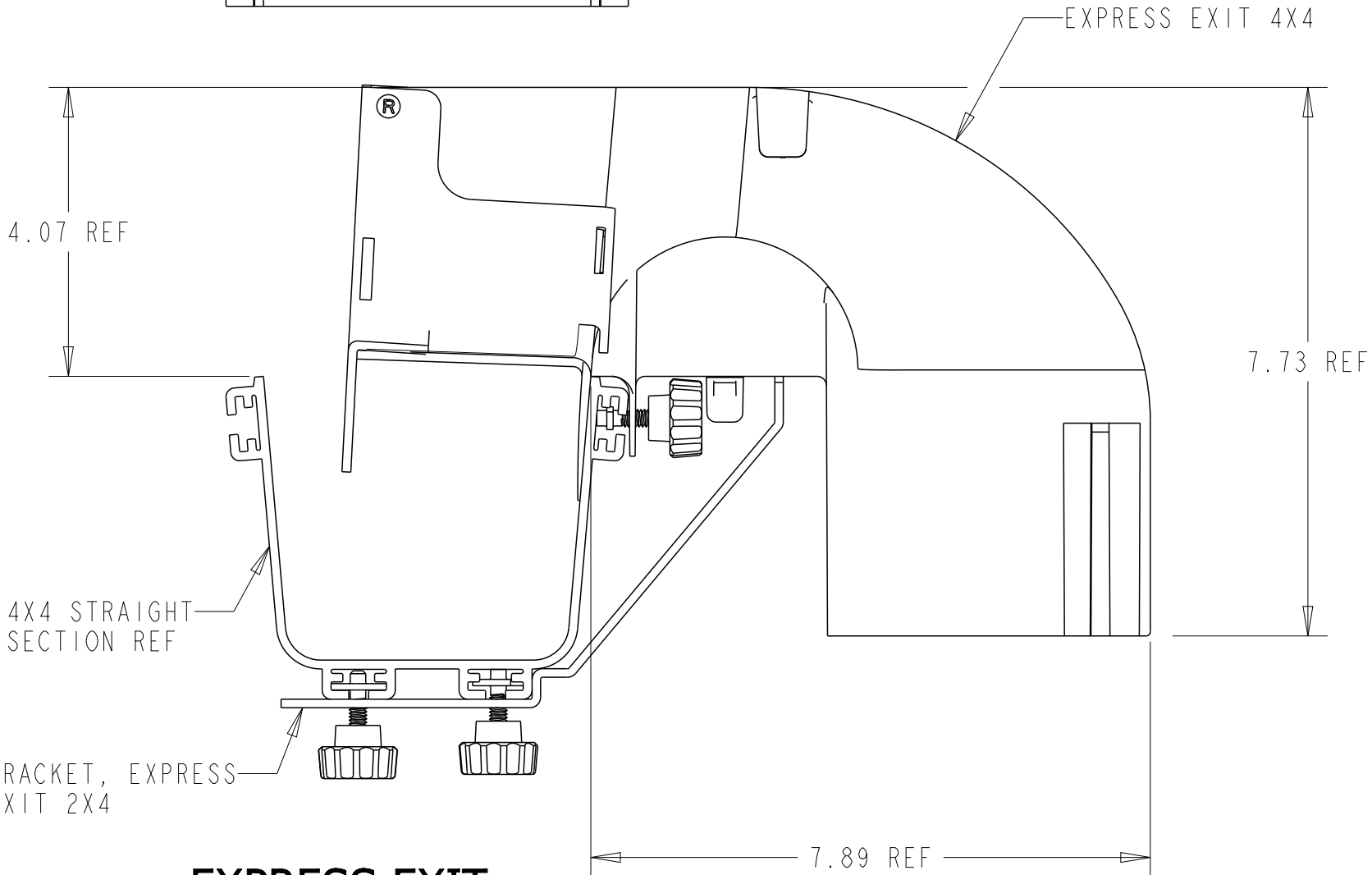
ISO VIEW
SCALE 0.450

I COVER, EXPRESS EXIT 4X4

COVER EXTENSION
4X4 FLIP COVER
FGS-MEXC-E-A
(NOT INCLUDED IN KIT)



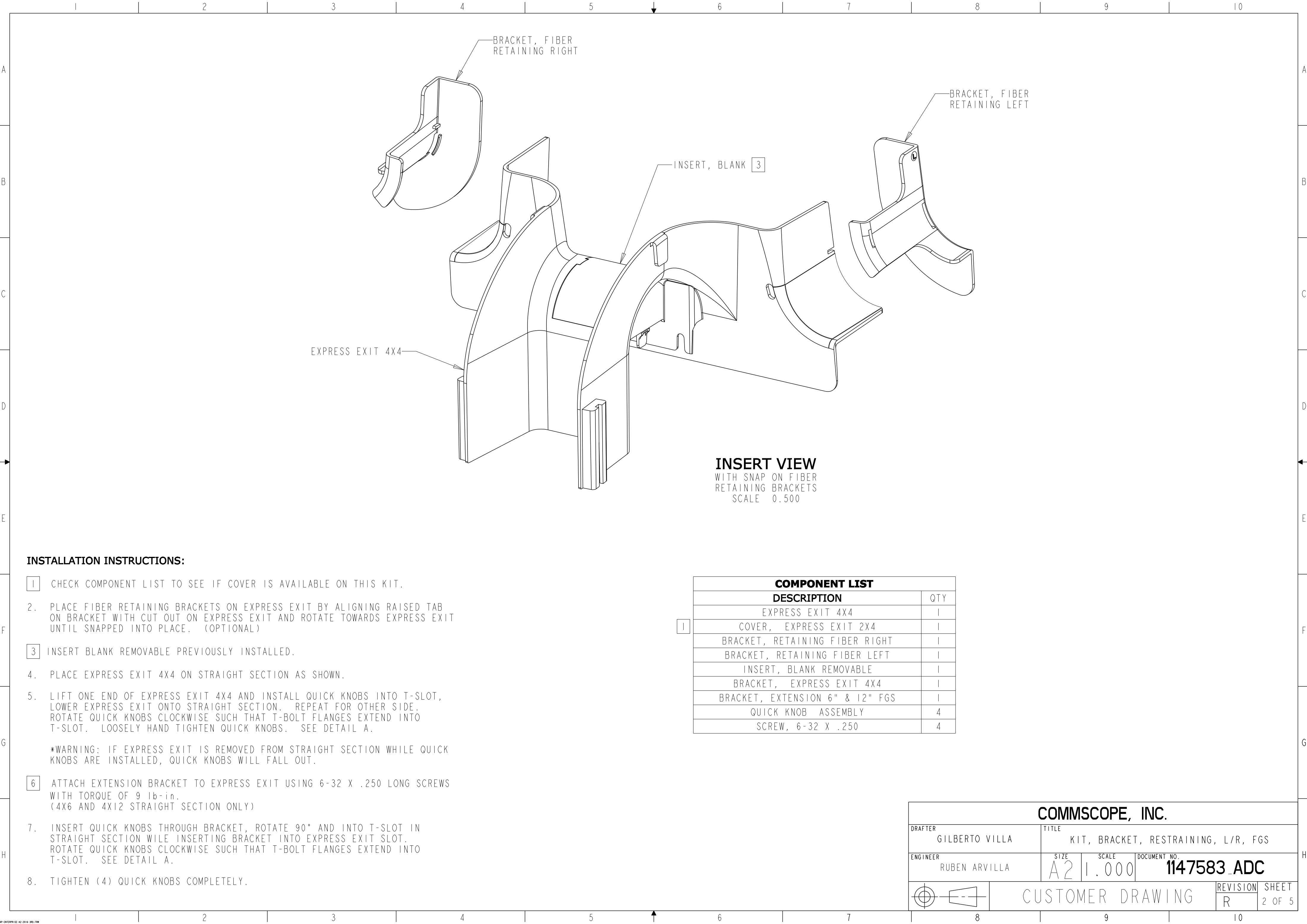
FLIP COVER OPEN VIEW
SCALE 0.450



**EXPRESS EXIT
ON TROUGH VIEW**
SCALE 0.450

FGSB-MEXP-E-ABF-NC	BLACK
FGS-MEXP-E-ABF-NC	YELLOW
I FGSB-MEXP-E-A/B/F	BLACK
I FGS-MEXP-E-A/B/F	YELLOW
CATALOG NO.	COLOR

COMMSCOPE, INC.				
DRAFTER GILBERTO VILLA	TITLE KIT, BRACKET, RESTRAINING, L/R, FGS			
ENGINEER RUBEN ARVILLA	SIZE A2	SCALE 1.000	DOCUMENT NO. 1147583_ADC	
CUSTOMER DRAWING			REVISION R	SHEET 1 OF 5

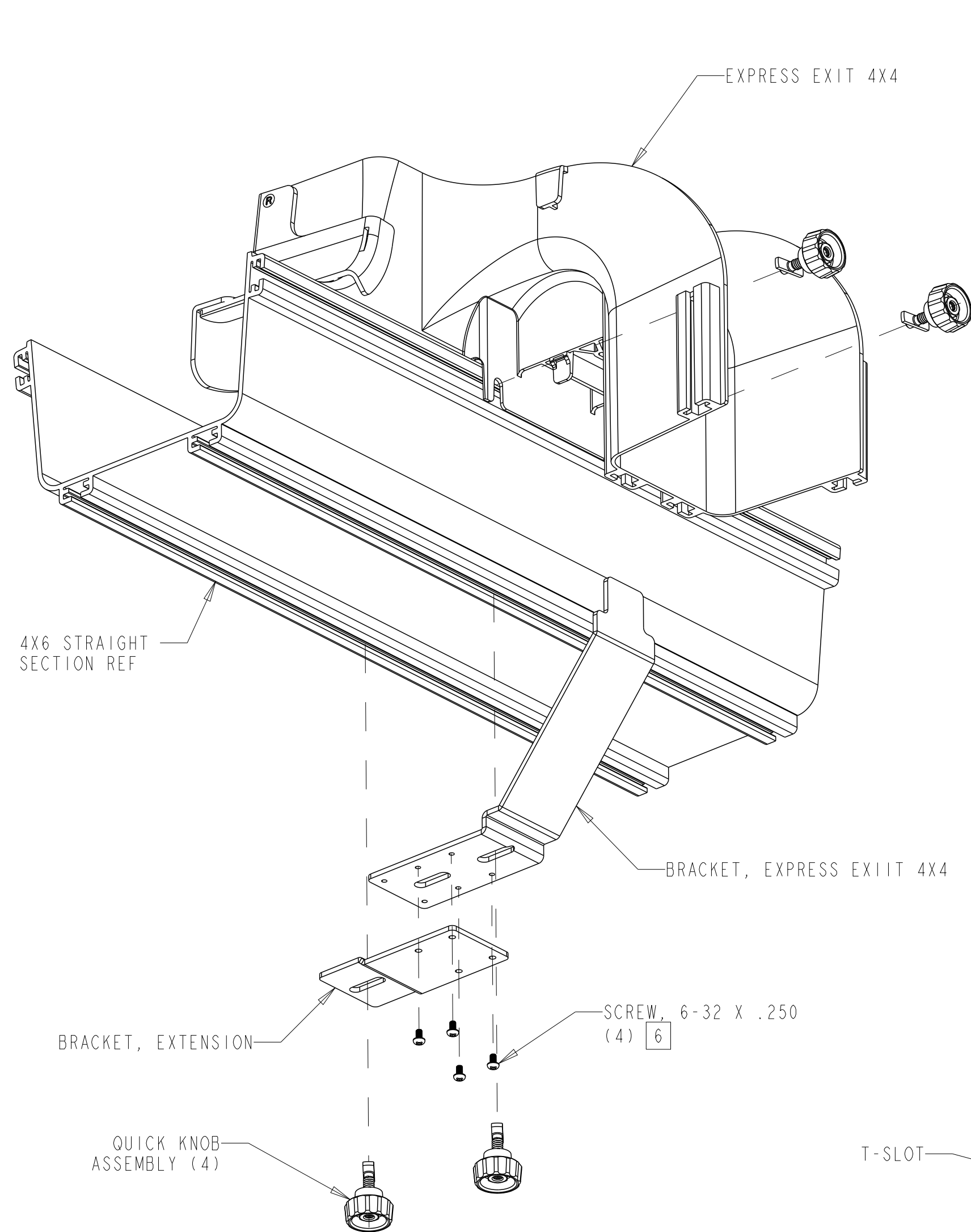


INSTALLATION INSTRUCTIONS:

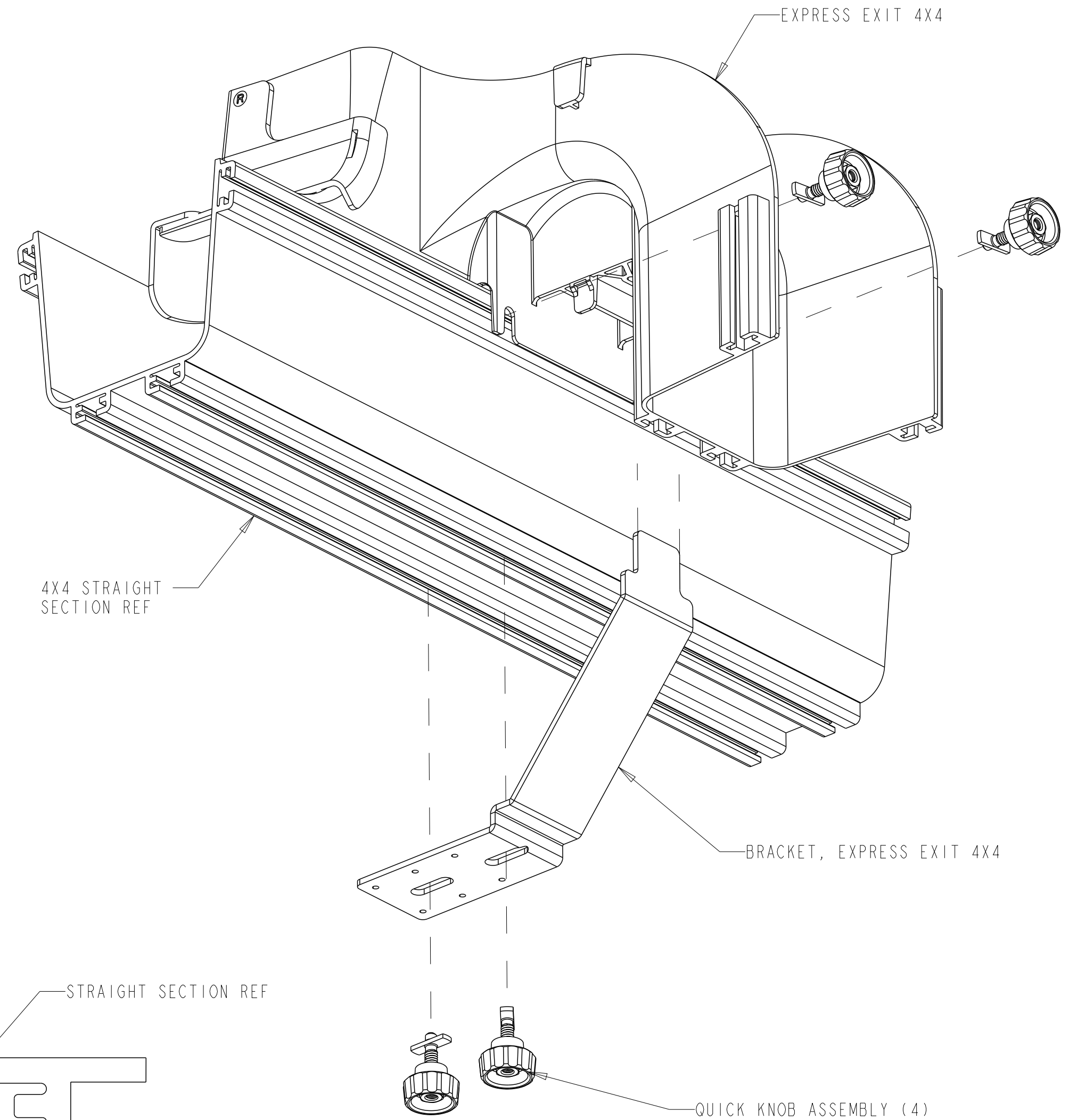
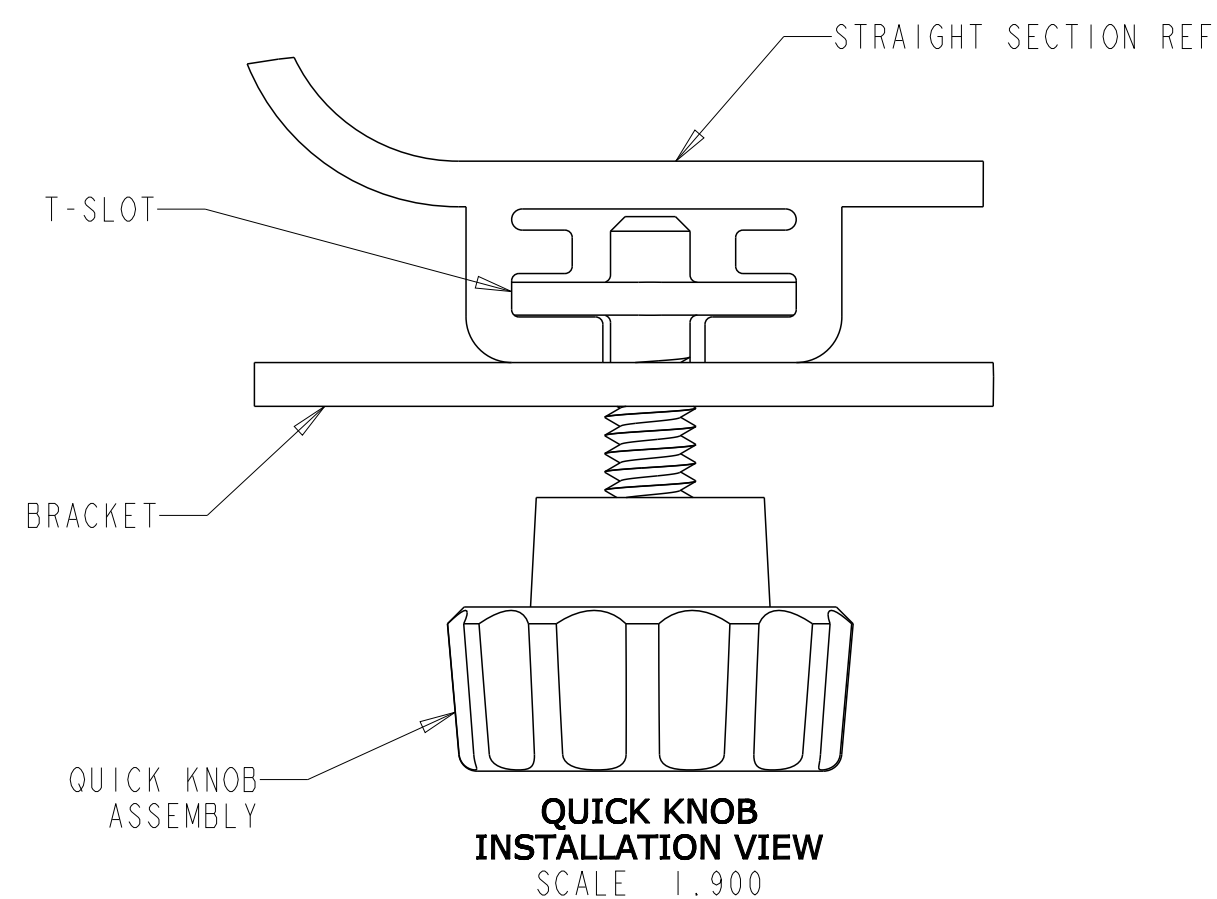
- 1
- CHECK COMPONENT LIST TO SEE IF COVER IS AVAILABLE ON THIS KIT.
- 2
- PLACE FIBER RETAINING BRACKETS ON EXPRESS EXIT BY ALIGNING RAISED TAB ON BRACKET WITH CUT OUT ON EXPRESS EXIT AND ROTATE TOWARDS EXPRESS EXIT UNTIL SNAPPED INTO PLACE. (OPTIONAL)
- 3
- INSERT BLANK REMOVABLE PREVIOUSLY INSTALLED.
- 4
- PLACE EXPRESS EXIT 4X4 ON STRAIGHT SECTION AS SHOWN.
- 5
- LIFT ONE END OF EXPRESS EXIT 4X4 AND INSTALL QUICK KNOBS INTO T-SLOT, LOWER EXPRESS EXIT ONTO STRAIGHT SECTION. REPEAT FOR OTHER SIDE. ROTATE QUICK KNOBS CLOCKWISE SUCH THAT T-BOLT FLANGES EXTEND INTO T-SLOT. LOOSELY HAND TIGHTEN QUICK KNOBS. SEE DETAIL A.
- *WARNING: IF EXPRESS EXIT IS REMOVED FROM STRAIGHT SECTION WHILE QUICK KNOBS ARE INSTALLED, QUICK KNOBS WILL FALL OUT.
- 6
- ATTACH EXTENSION BRACKET TO EXPRESS EXIT USING 6-32 X .250 LONG SCREWS WITH TORQUE OF 9 lb-in. (4X6 AND 4X12 STRAIGHT SECTION ONLY)
- 7
- INSERT QUICK KNOBS THROUGH BRACKET, ROTATE 90° AND INTO T-SLOT IN STRAIGHT SECTION WILE INSERTING BRACKET INTO EXPRESS EXIT SLOT. ROTATE QUICK KNOBS CLOCKWISE SUCH THAT T-BOLT FLANGES EXTEND INTO T-SLOT. SEE DETAIL A.
- 8
- TIGHTEN (4) QUICK KNOBS COMPLETELY.

COMPONENT LIST		
DESCRIPTION		QTY
EXPRESS EXIT 4X4		1
COVER, EXPRESS EXIT 2X4		1
BRACKET, RETAINING FIBER RIGHT		1
BRACKET, RETAINING FIBER LEFT		1
INSERT, BLANK REMOVABLE		1
BRACKET, EXPRESS EXIT 4X4		1
BRACKET, EXTENSION 6" & 12" FGS		1
QUICK KNOB ASSEMBLY		4
SCREW, 6-32 X .250		4

COMMSCOPE, INC.				
DRAFTER GILBERTO VILLA		TITLE KIT, BRACKET, RESTRAINING, L/R, FGS		
ENGINEER RUBEN ARVILLA		SIZE A2	SCALE 1.000	DOCUMENT NO. 1147583_ADC
		CUSTOMER DRAWING		
			REVISION R	SHEET 2 OF 5

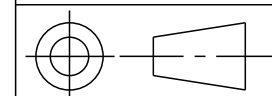


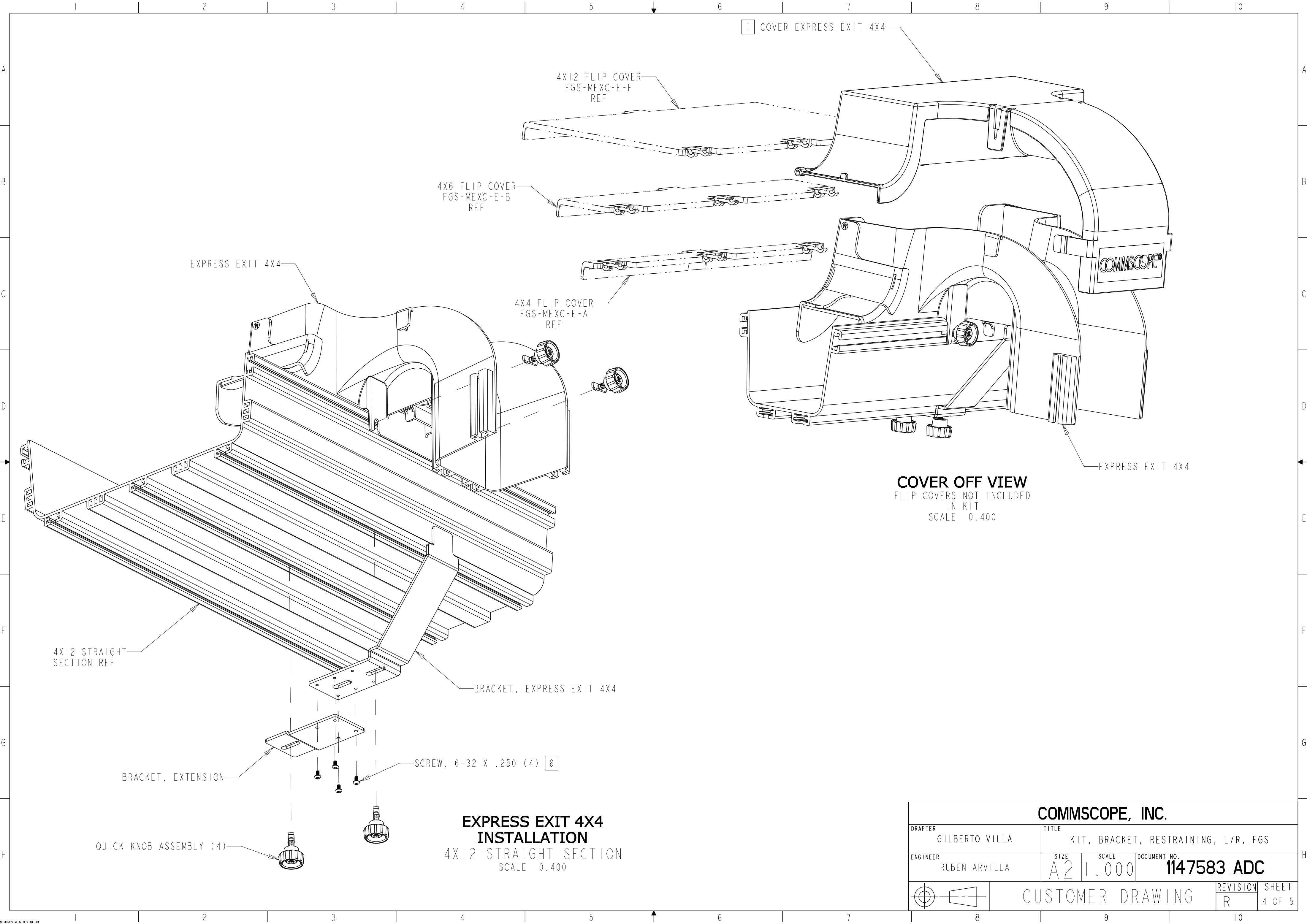
**EXPRESS EXIT 4X4
INSTALLATION**
4X6 STRAIGHT SECTION
SCALE 0.400



**EXPRESS EXIT 4X4
INSTALLATION**
4X4 STRAIGHT SECTION
SCALE 0.500

COMMSCOPE, INC.				
DRAFTER GILBERTO VILLA	TITLE KIT, BRACKET, RESTRAINING, L/R, FGS			
ENGINEER RUBEN ARVILLA	SIZE A2	SCALE 1.000	DOCUMENT NO. 1147583_ADC	
CUSTOMER DRAWING			REVISION R	SHEET 3 OF 5

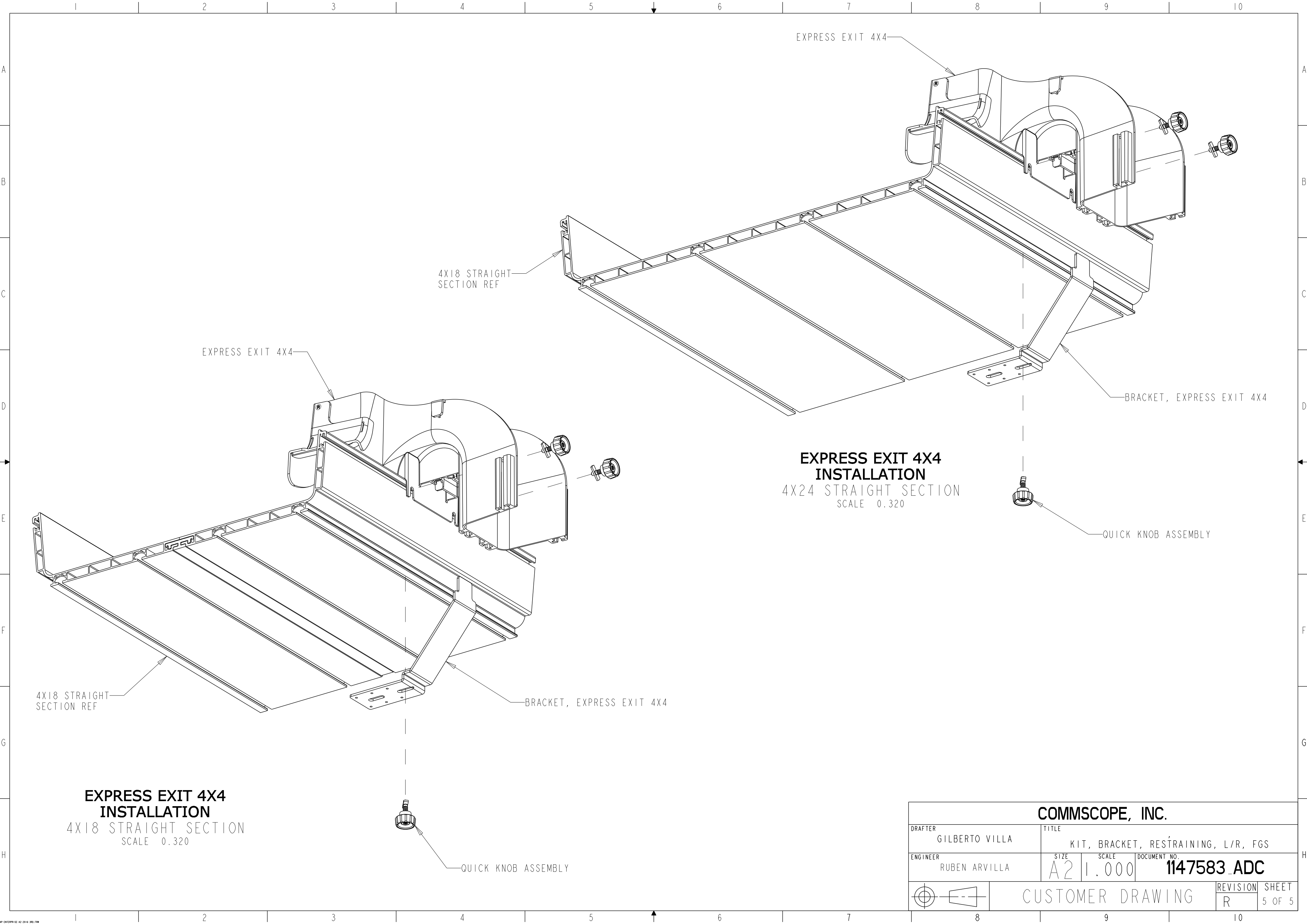




COVER OFF VIEW
FLIP COVERS NOT INCLUDED
IN KIT
SCALE 0.400

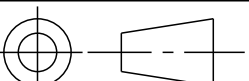
**EXPRESS EXIT 4X4
INSTALLATION**
4X12 STRAIGHT SECTION
SCALE 0.400

COMMSCOPE, INC.				
DRAFTER GILBERTO VILLA	TITLE KIT, BRACKET, RESTRAINING, L/R, FGS			
ENGINEER RUBEN ARVILLA	SIZE A2	SCALE 1.000	DOCUMENT NO. 1147583_ADC	
			REVISION R	SHEET 4 OF 5
			CUSTOMER DRAWING	



**EXPRESS EXIT 4X4
INSTALLATION**
4X24 STRAIGHT SECTION
SCALE 0.320

**EXPRESS EXIT 4X4
INSTALLATION**
4X18 STRAIGHT SECTION
SCALE 0.320

COMMSCOPE, INC.				
DRAFTER GILBERTO VILLA		TITLE KIT, BRACKET, RESTRAINING, L/R, FGS		
ENGINEER RUBEN ARVILLA		SIZE A2	SCALE 1.000	DOCUMENT NO. 1147583_ADC
			REVISION R	SHEET 5 OF 5
			CUSTOMER DRAWING	