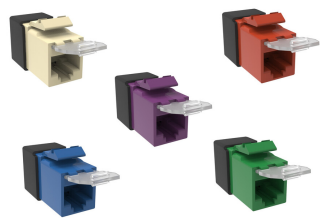


SL10G-DC

Base Product



SL-Series Modular Jack, RJ45, Cat6A Unshielded, With Dust Cover

Product Classification

Regional Availability	Asia Australia/New Zealand EMEA Latin America
Portfolio	NETCONNECT®
Product Type	Modular jack
Product Series	SL Series

General Specifications

ANSI/TIA Category	6A
Cable Type	Unshielded
Conductor Type	Solid Stranded
Integrated Dust Cover Type	Hinged
Mounting	SL Series faceplates and panels
Outlet Type	Standard
Termination Tool	SL Termination tool
Termination Type	IDC
Transmission Standards	ANSI/TIA-568.2-D ISO/IEC 11801 Class EA
Wiring	T568A T568B

Dimensions

Panel Cutout, recommended	14.78 x 20.07 mm (0.58 x 0.79 in)
Panel Thickness, recommended	1.6 mm 0.063 in
Height	16.13 mm 0.635 in
Width	14.48 mm 0.57 in
Depth	32.43 mm 1.277 in
Compatible Cable Diameter, maximum	7.24 mm 0.285 in
Compatible Insulated Conductor Diameter, maximum	1.45 mm 0.057 in

SL10G-DC

Contact Plating Thickness	1.27 μm
Compatible Conductor Gauge, solid	24–22 AWG
Compatible Conductor Gauge, stranded	26–24 AWG

Electrical Specifications

Remote Powering	Fully supports the safe delivery of power over LAN cabling described by IEEE 802.3bt (Type 4) and complies with the unmating under electrical load requirements prescribed by IEC 60512-99-002
PoE Durability	Supports IEEE 802.3bt Type 4 (90 W) applications greater than 3000 plug to jack mating cycles

Material Specifications

Contact Base Material	Beryllium copper
Contact Plating Material	Gold
Material Type	Copper alloy High-impact, flame retardant, thermoplastic Polycarbonate

Mechanical Specifications

Plug to Jack Mating Cycles	Complies to IEC 60603-7 series
----------------------------	--------------------------------

Environmental Specifications

Operating Temperature	-10 °C to +60 °C (+14 °F to +140 °F)
Storage Temperature	-40 °C to +70 °C (-40 °F to +158 °F)
Flammability Rating	UL 94 V-0