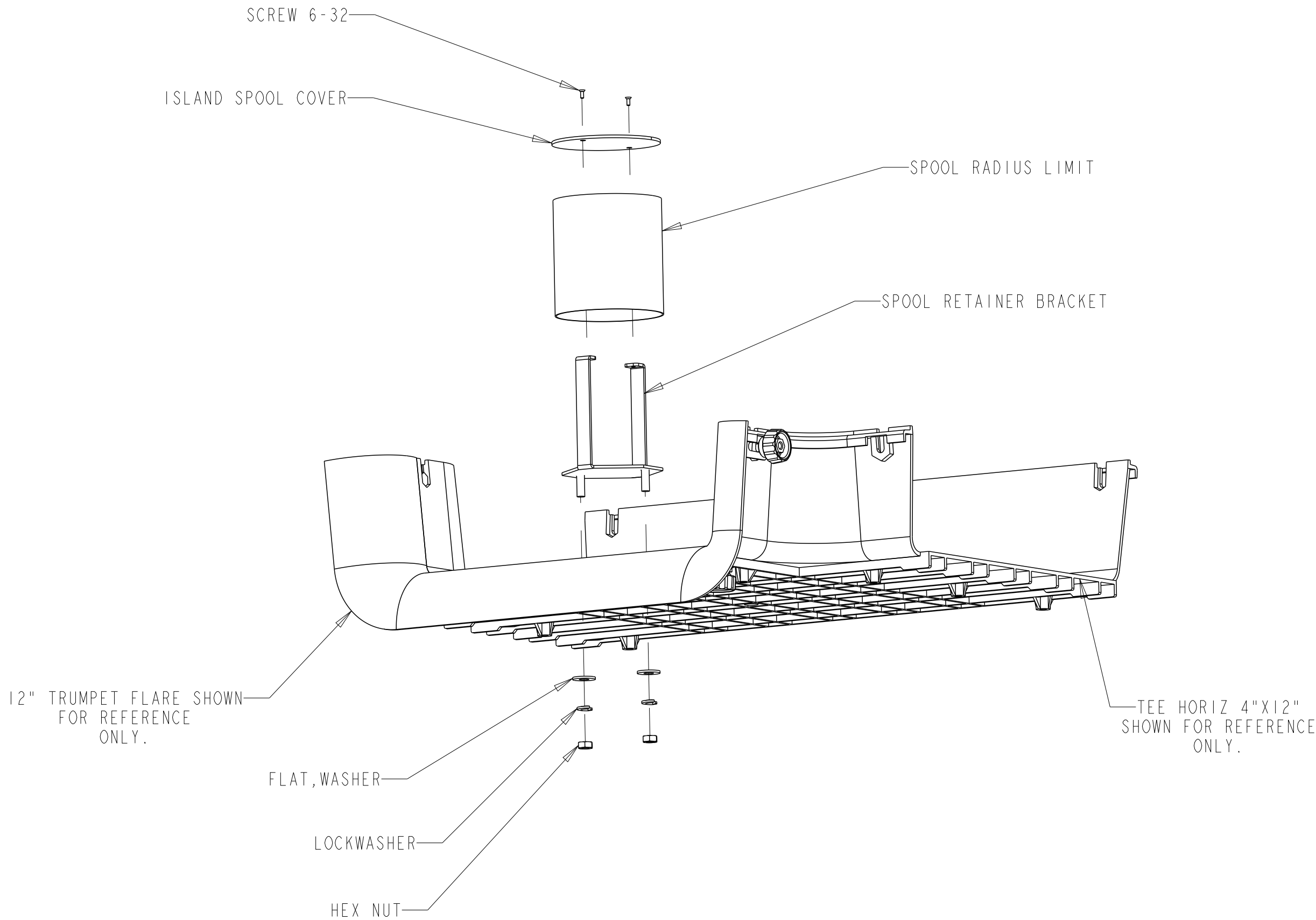
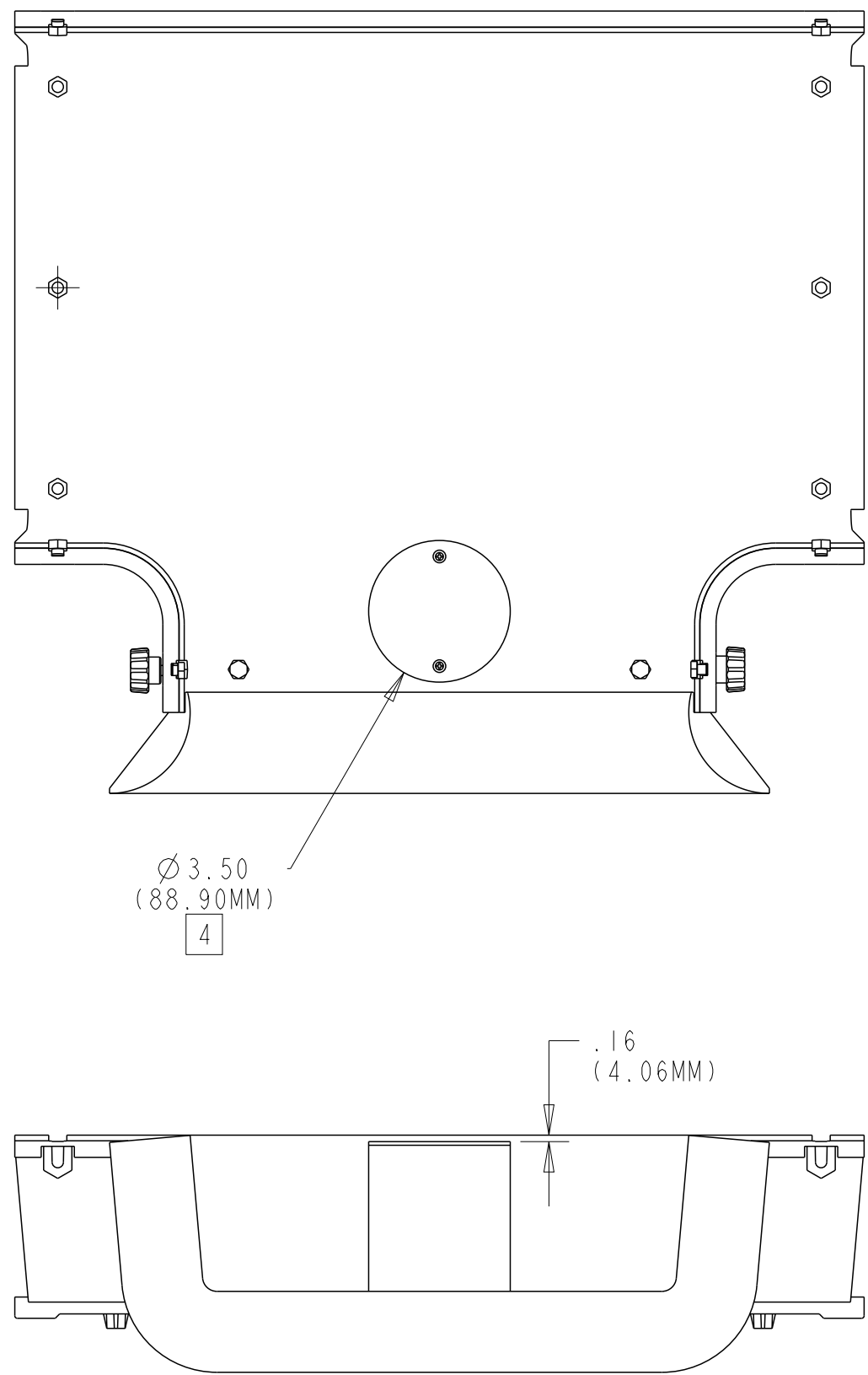


REVISIONS			
REV	CMO	DATE	APPROVED
A	20285060CMO	29-MAR-2010	JBC
B	40222138CMO	30-JUN-2025	FS



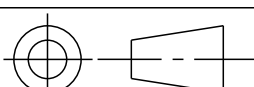
NOTES:

1. KIT INCLUDES THE FOLLOWING:
- (1) ASSEMBLY ISLAND SPOOL.
 - (2) NUT HEX .25-20
 - (2) WASHER FLAT
 - (2) LOCKWASHER
2. DRILL THE HOLES USING A 17/64" (.2656") BIT THROUGH MATERIAL OF THE PIECE WHERE THE ISLAND SPOOL WILL BE ATTACHED.
3. ONTO THE STUDS OF SPOOL PLACED IN THE PRE-DRILLED HOLES, ASSEMBLE (2) WASHER, THEN (2) LOCKWASHER AND (2) NUT HEX. TIGHTEN NUT HEX COMPLETELY.

[4] THIS POSITION IS SHOWN FOR REFERENCE, THE USER CAN INSTALL THE ISLAND SPOOL IN DIFFERENT POSITION AS NEEDED.

FGS-ACC-SPOOL

CATALOG NUMBER

COMMSCOPE, INC.					
DRAFTER J. BARRAZA		TITLE ISLAND SPOOL KIT, INSTALLATION DWG			
ENGINEER RUBEN ARVILLA		SIZE A2	SCALE 0.275	DOCUMENT NO. 1687937_ADC	
		CUSTOMER DRAWING		REVISION	SHEET
				B	I OF I