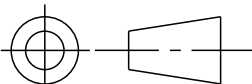




REVISIONS			
REV	DESCRIPTION	DATE	APPROVED
E	40107371CMO	05-MAR-2020	MAM
F	40220580CMO	06-JUN-2025	FS

FGS-ISLAND-F	20.99" / 533MM	YELLOW
CATALOG NUMBER	"X" WIDTH REF	COLOR

COMMSCOPE, INC.										
TOLERANCES					SAP MATERIAL MASTER					
N/A										
FINISH					MATERIAL					
SEE NOTES					SEE BOM					
UNLESS OTHERWISE SPECIFIED DIMENSIONS ARE IN INCHES	DRAFTER				TITLE					
	MIGUEL MUÑOZ									
	CHECKER				ISLAND KIT, 12" FGS TEE INSTALLATION DRAWING					
	OSCAR VALENZUELA									
	ENGINEER				SIZE	SCALE	DOCUMENT NO.			
RUBEN ARVILLA				A 2	0.275	1250729_ADC				
CMO	40220580CMO									
ALL SURFACES	WORK AREA: ***		MODEL				DRAWING			SHEET 1 OF 4
✓			VERSION	STATUS	REVISION	VERSION	STATUS	REVISION		
			***			02	RE	F		

NOTES:

1. KIT INCLUDES THE FOLLOWING:
- (1) 12"FGS TEE/ISLAND KIT ASSEMBLY, COMPRISED OF THE FOLLOWING:
    - (1) 12" TEE
    - (1) MOUNTED ISLAND
    - (1) ISLAND MOUNT BRACKET AND COVER
    - (1) ASSEMBLED TRUMPET FLARE
    - (1) ASSEMBLED MOUNTING BRACKETS

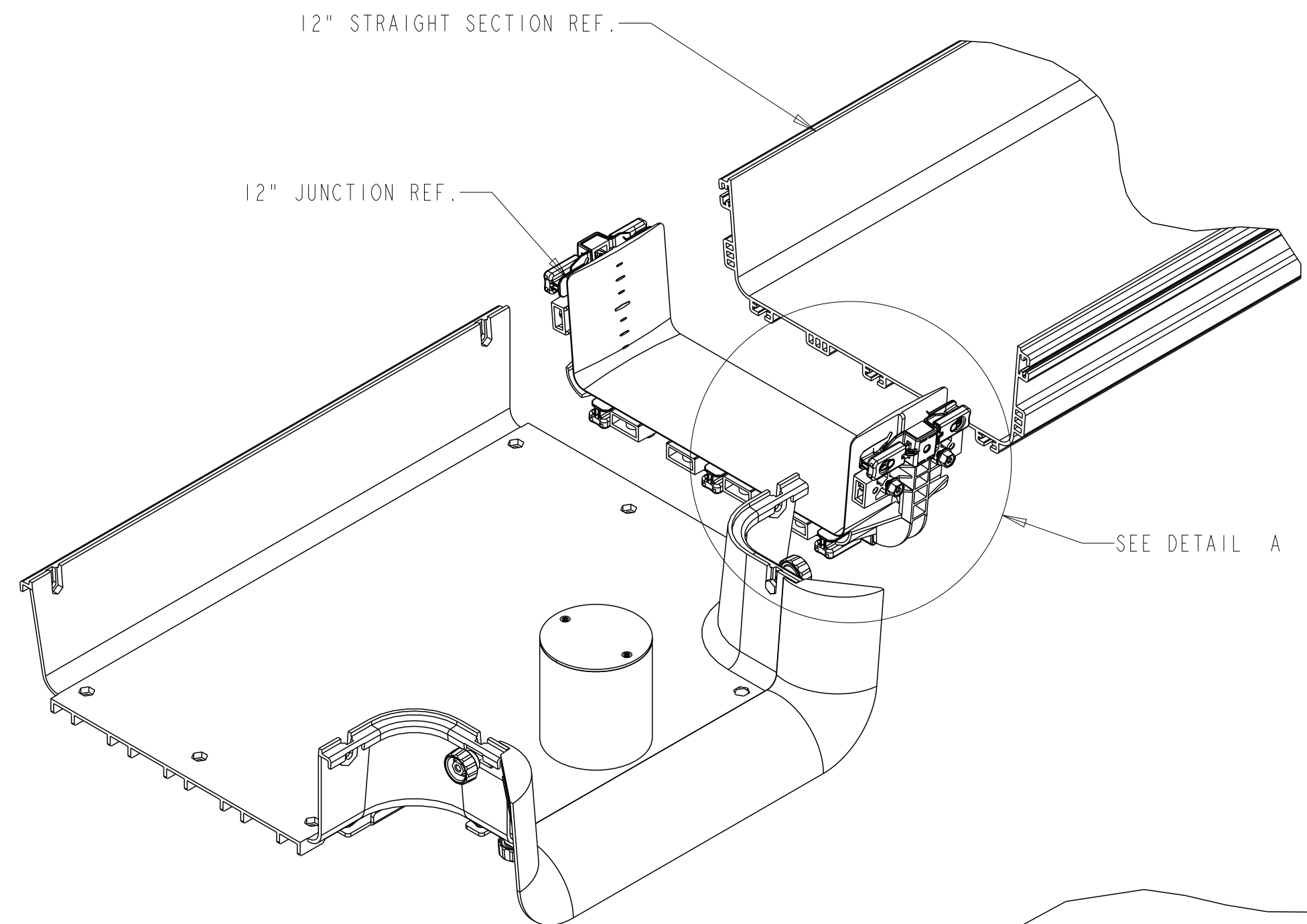
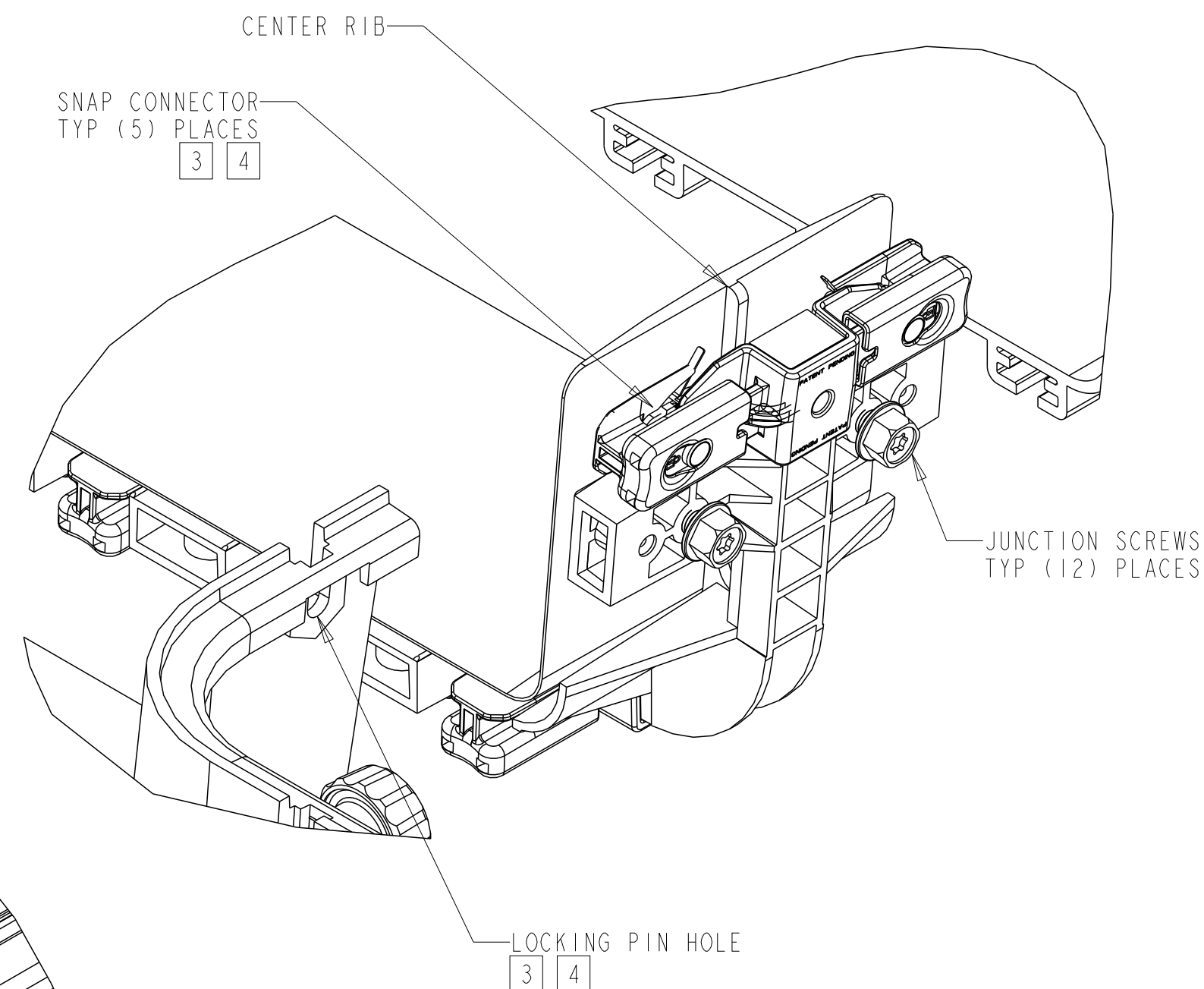


FIGURE 1



DETAIL A  
SCALE 0.750

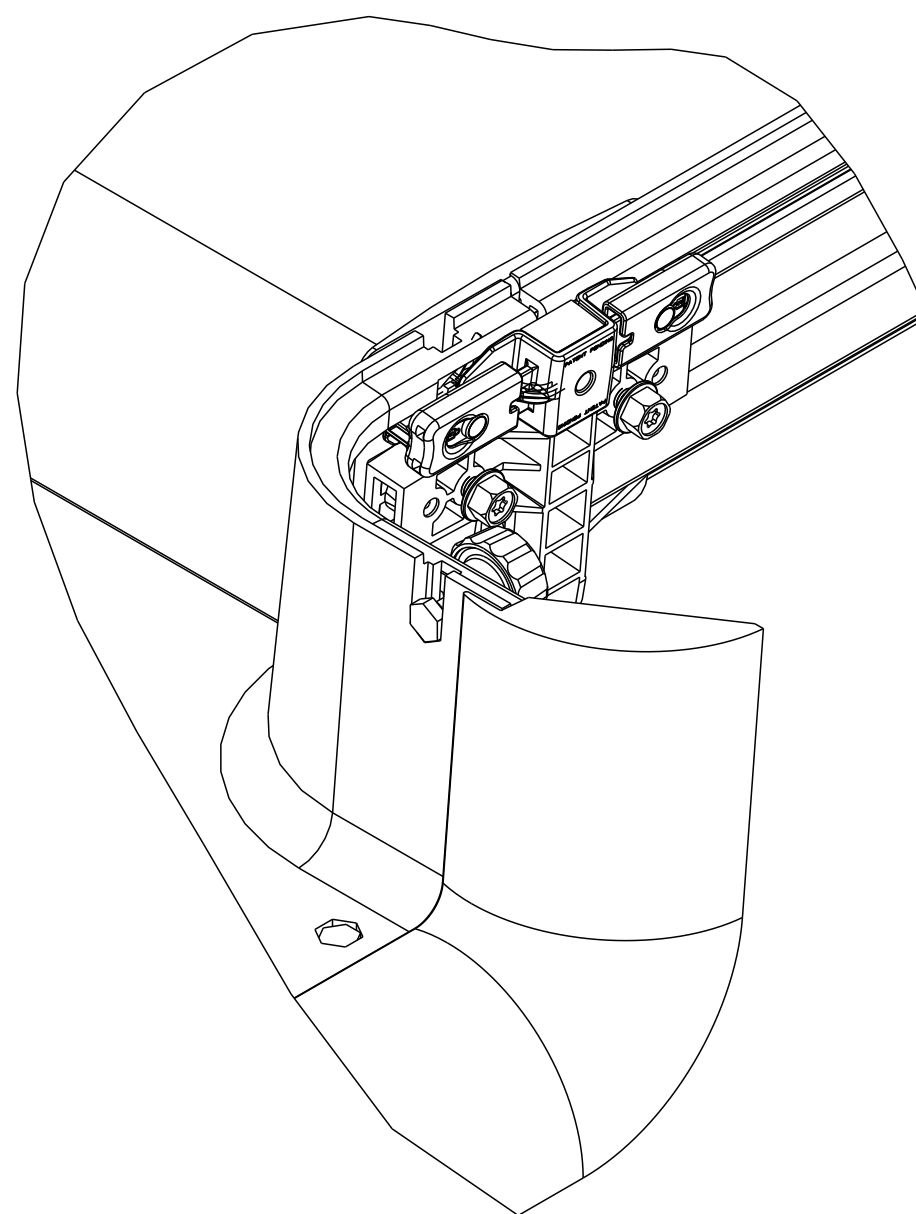


FIGURE 2  
COMPLETED ASSEMBLY  
SCALE 0.500

ASSEMBLY INSTRUCTIONS:

2. SLIDE ONE EXIT OF THE TEE KIT INTO JUNCTION UNTIL FIRMLY SEATED AGAINST THE CENTER RIB. (SEE FIGURE 2).
3. ENSURE LOCKING PINS ON SNAP CONNECTOR ARE ENGAGED IN HOLES IN TEE. (SEE FIGURE 2). ONLY APPLICABLE WITH ADC PART FGS-ISLAND-F.
4. SNAP CONNECTORS WILL NOT ENGAGE IN HOLES IN TEE FOR PART FGS-ISLAND-F-513.
5. SLIDE THE 12" FIBERGUIDE STRAIGHT SECTION INTO THE JUNCTION UNTIL FIRMLY SEATED AGAINST THE CENTER RIB.
6. TIGHTEN THE (12) JUNCTION SCREWS SUCH THAT THE WASHER HEAD ON THE SCREW IS APPROXIMATELY 1/16" (1.6MM) FROM THE JUNCTION SUPPORT ARM. (SEE DETAIL A). AFTER ALL SCREWS HAVE BEEN TIGHTENED IN THIS MANNER, TIGHTEN ALL SCREWS UNTIL THE WASHER HEAD BOTTOMS OUT.
7. REPEAT ABOVE NOTES FOR THE OTHER EXIT OF THE TEE.

**COMMScope, INC.**

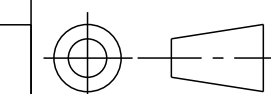
TITLE  
ISLAND KIT, 12" FGS TEE  
INSTALLATION DRAWING

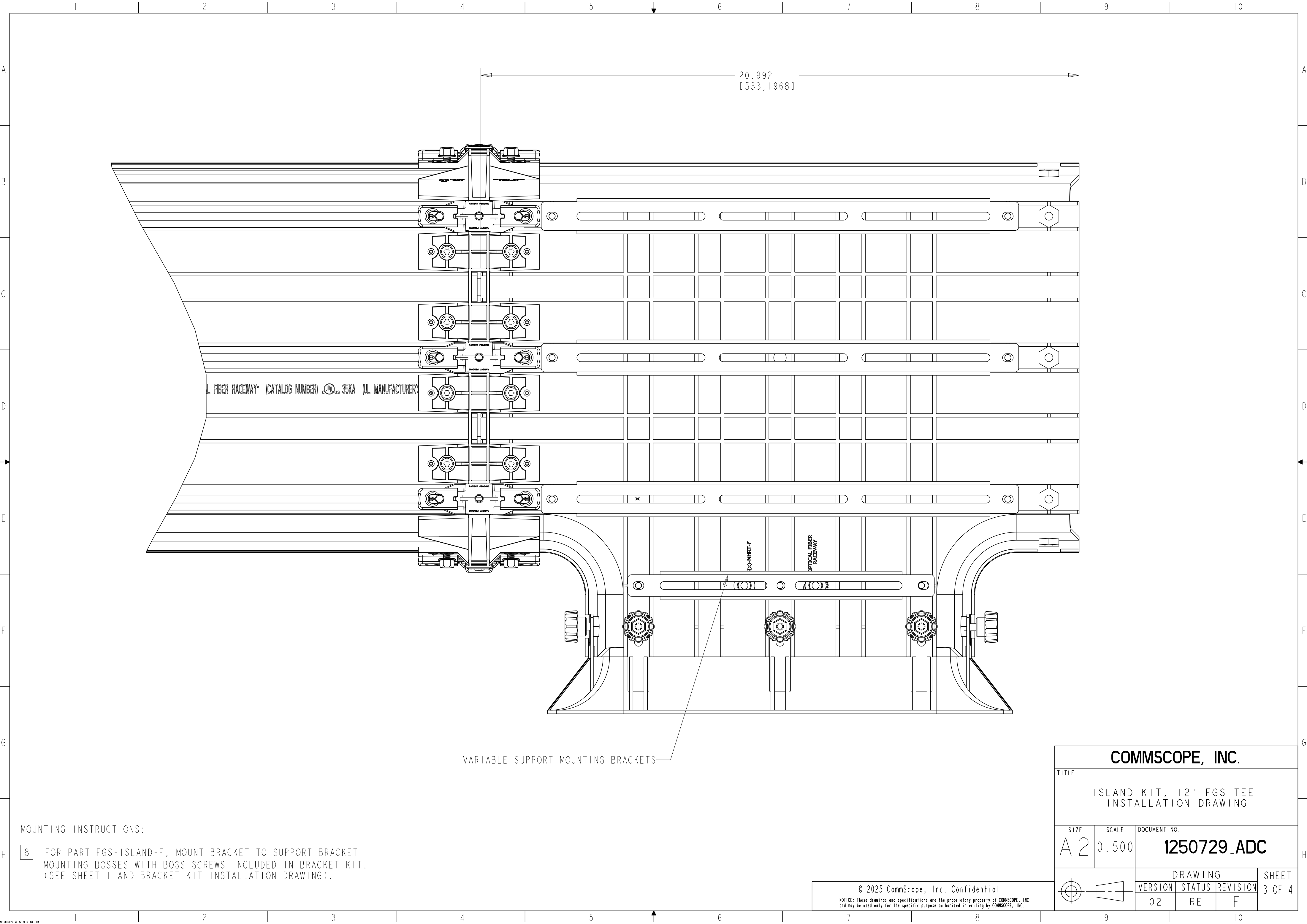
SIZE A 2	SCALE 0.250	DOCUMENT NO. <b>1250729_ADC</b>
-------------	----------------	------------------------------------

DRAWING VERSION	STATUS	REVISION	SHEET 2 OF 4

© 2025 CommScope, Inc. Confidential

NOTICE: These drawings and specifications are the proprietary property of COMMScope, INC. and may be used only for the specific purpose authorized in writing by COMMScope, INC.



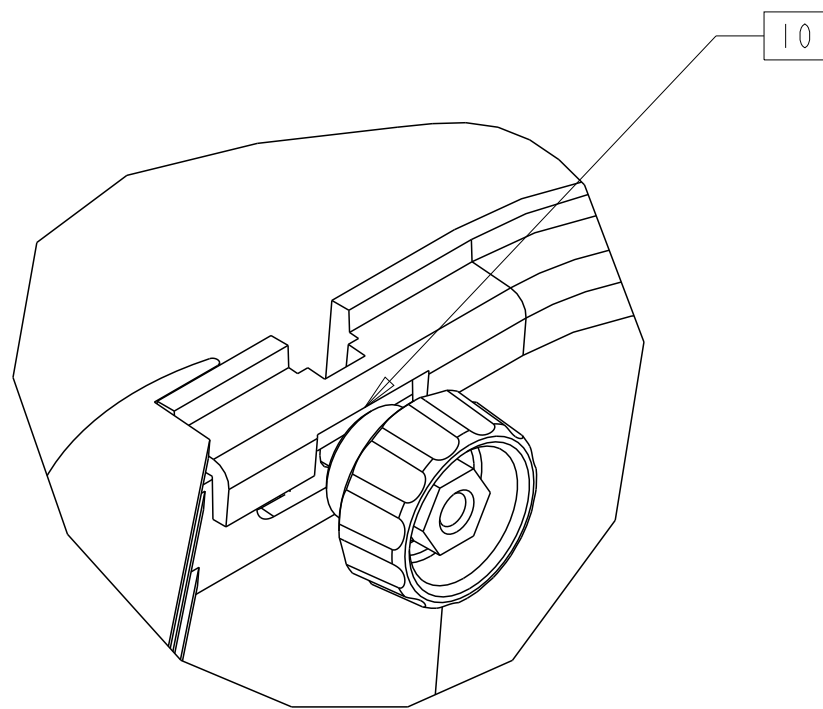
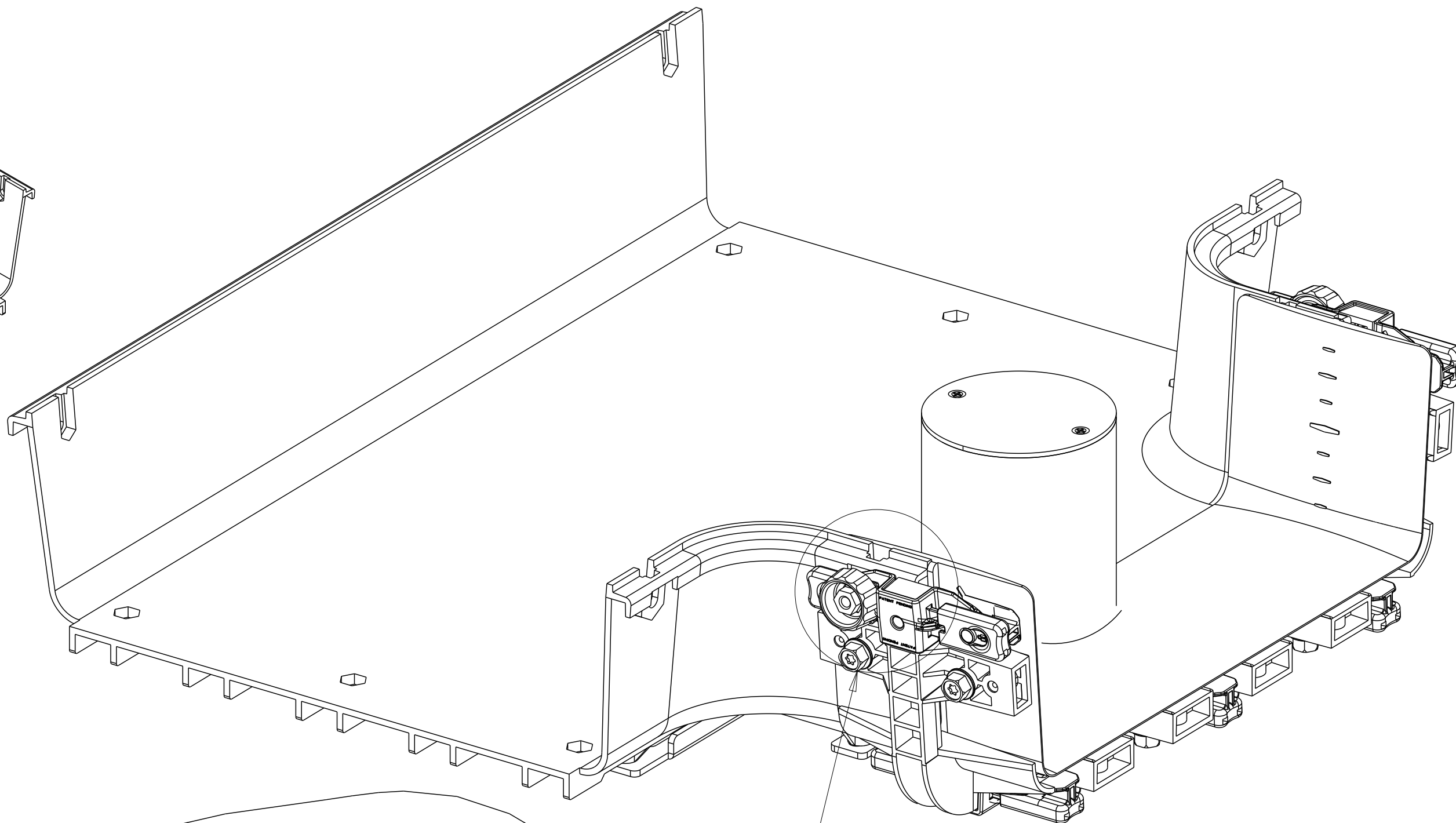
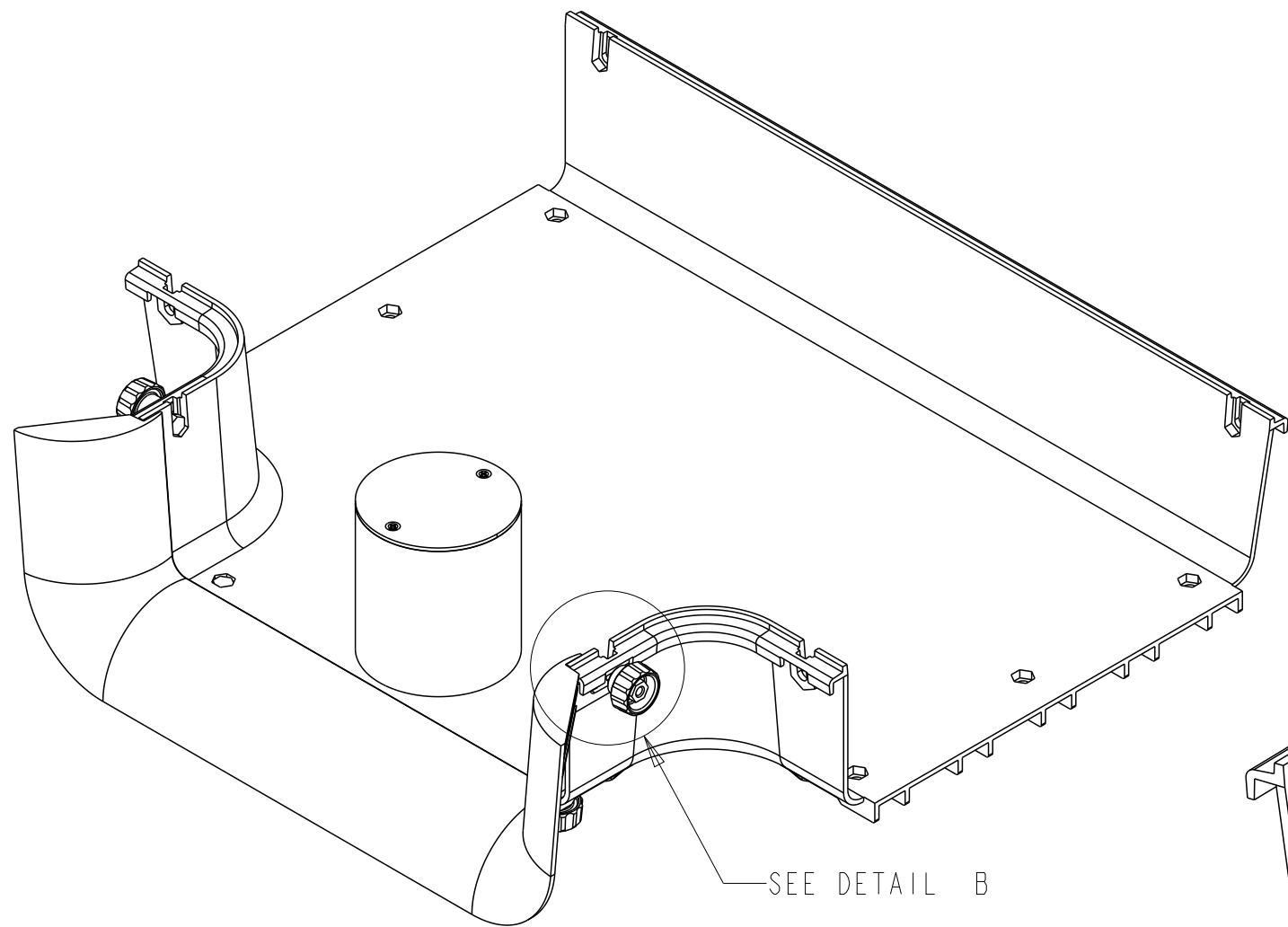


MOUNTING INSTRUCTIONS:

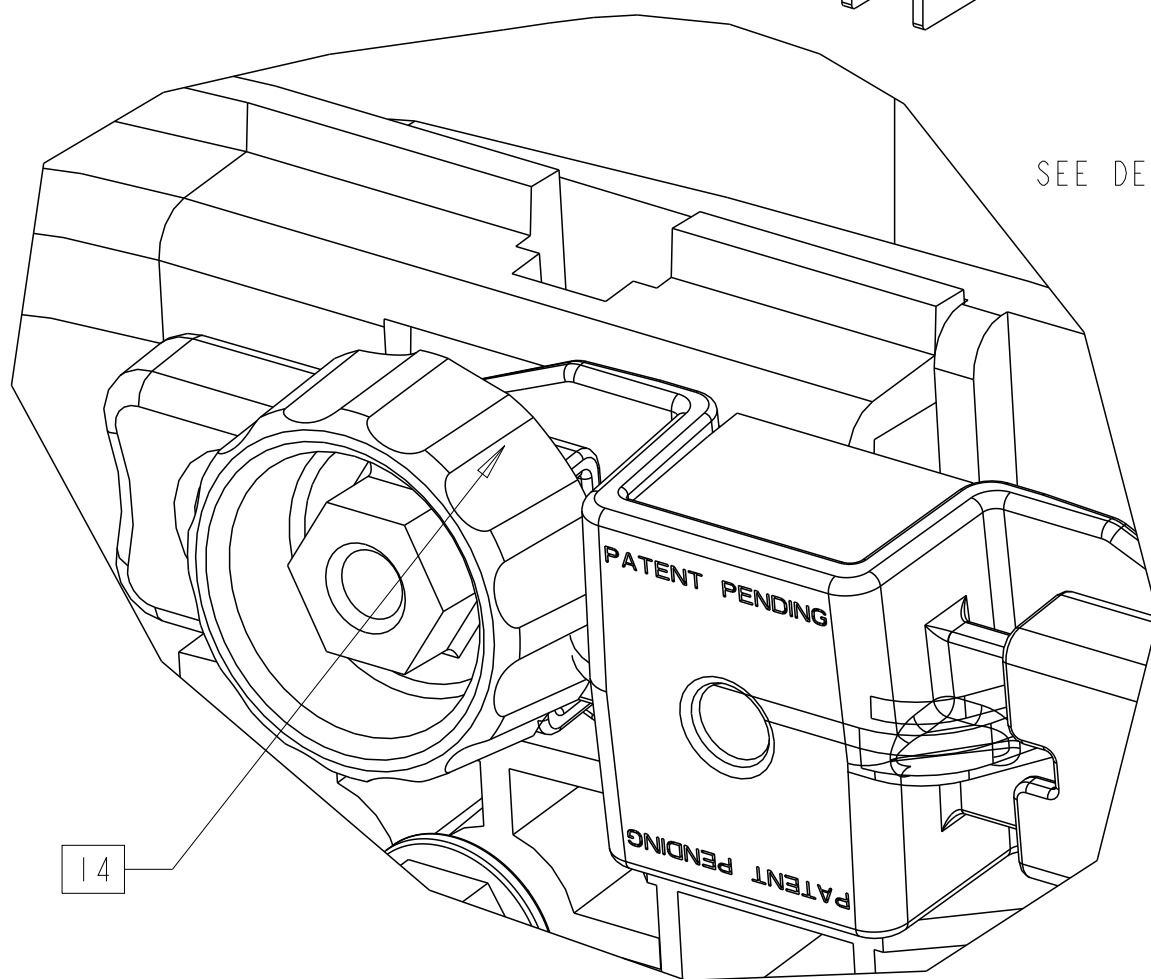
- 8
- FOR PART FGS-ISLAND-F, MOUNT BRACKET TO SUPPORT BRACKET MOUNTING BOSSES WITH BOSS SCREWS INCLUDED IN BRACKET KIT. (SEE SHEET 1 AND BRACKET KIT INSTALLATION DRAWING).

© 2025 CommScope, Inc. Confidential  
NOTICE: These drawings and specifications are the proprietary property of COMMSCOPE, INC. and may be used only for the specific purpose authorized in writing by COMMSCOPE, INC.

COMMSCOPE, INC.				
TITLE				
ISLAND KIT, 12" FGS TEE INSTALLATION DRAWING				
SIZE	SCALE	DOCUMENT NO.		
A 2	0.500	1250729_ADC		
		DRAWING		
		VERSION	STATUS	REVISION
		02	RE	F
				SHEET 3 OF 4



DETAIL B  
SCALE 1.000



DETAIL C  
SCALE 2.000

JUNCTION INSTALLATION (OPTIONAL):

10. REMOVE HEX NUTS, RETAINING WASHERS, AND HEX BOLTS SECURING TRUMPET FLARE TO TEE.
11. REMOVE TRUMPET FLARE.
12. LOOSEN HEX NUTS SECURING ISLAND TO TEE FITTING.
13. SLIDE FGS JUNCTION (FGS-JUNC-F) ONTO EXIT OF TEE FITTING AND UNDER ISLAND ASSEMBLY UNTIL FIRMLY SEATED AGAINST THE CENTER RIB.
14. ENSURE LOCKING PINS ON SNAP CONNECTOR ARE ENGAGED IN HOLES IN TEE.
15. TIGHTEN THE JUNCTION SCREWS PER NOTE 6.
16. TIGHTEN HEX NUTS SECURING ISLAND TO TEE FITTING COMPLETELY.

COMMScope, INC.

TITLE  
ISLAND KIT, 12" FGS TEE  
INSTALLATION DRAWING

SIZE	SCALE	DOCUMENT NO.
A 2	0.275	1250729_ADC

DRAWING			SHEET 4 OF 4
VERSION	STATUS	REVISION	
02	RE	F	

© 2025 CommScope, Inc. Confidential

NOTICE: These drawings and specifications are the proprietary property of COMMScope, INC. and may be used only for the specific purpose authorized in writing by COMMScope, INC.