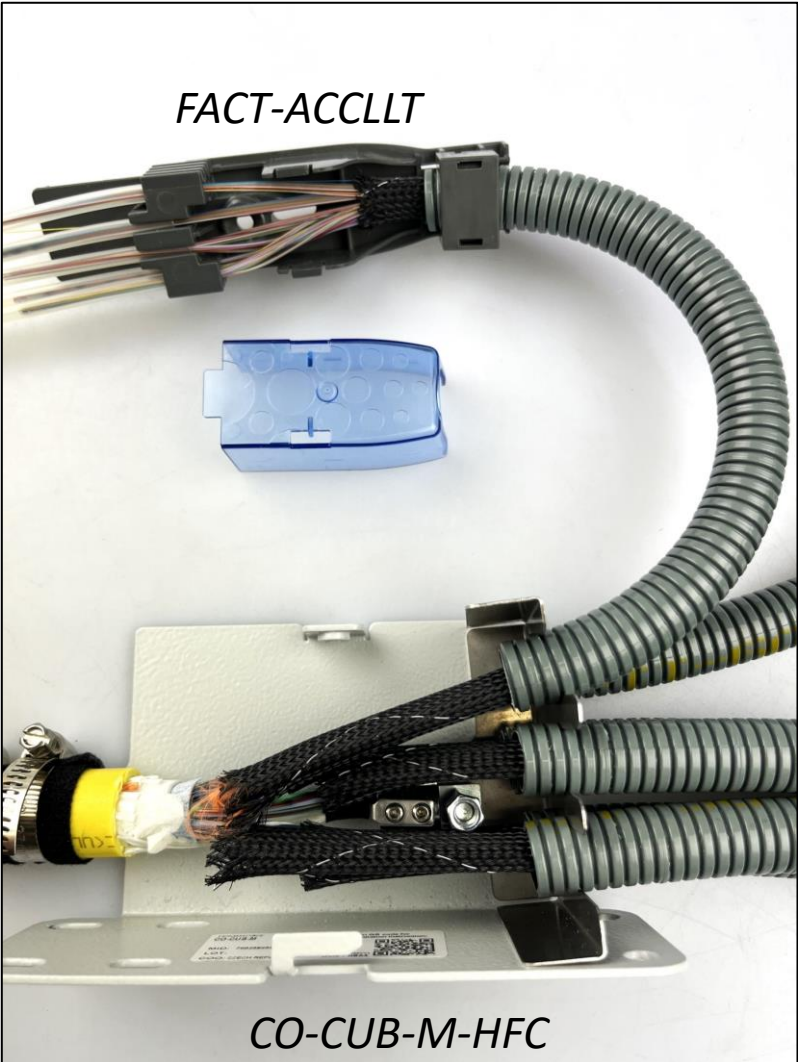


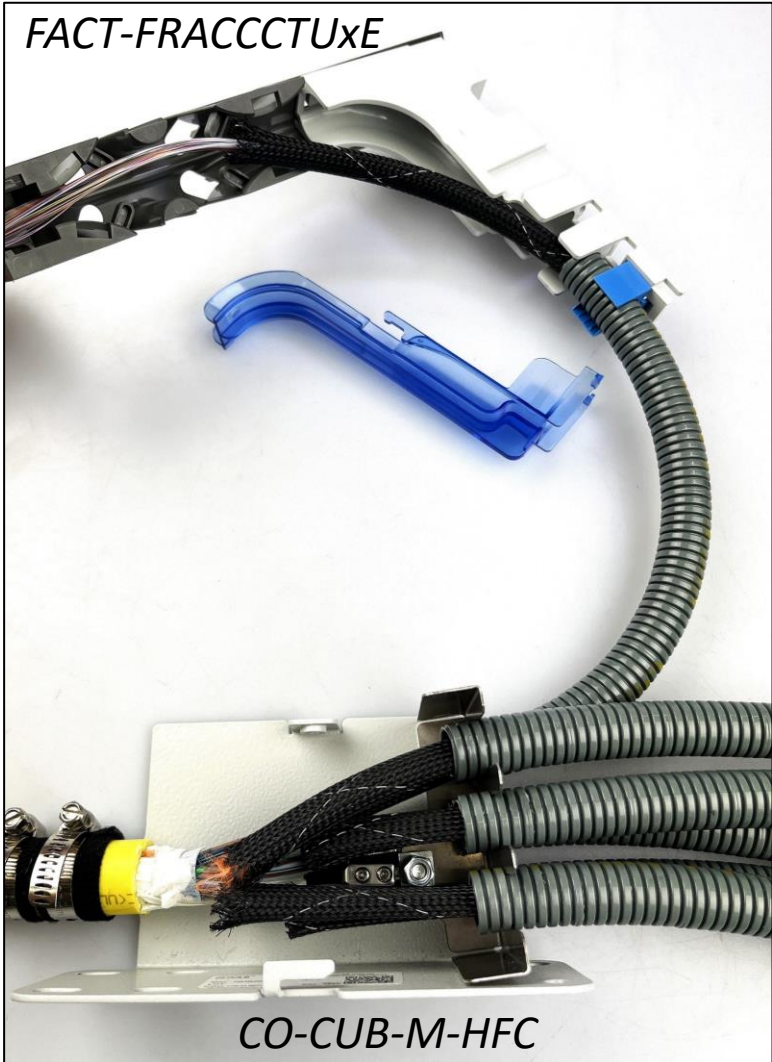
Installation Instruction:

CO-CUB-M-HFC (Cable Unit Breakout-Medium-High Fiber Count)

CO-CUB installation with [FACT-ACCLT](#)



CO-CUB installation with [FACT-FRACCCTUxE](#)



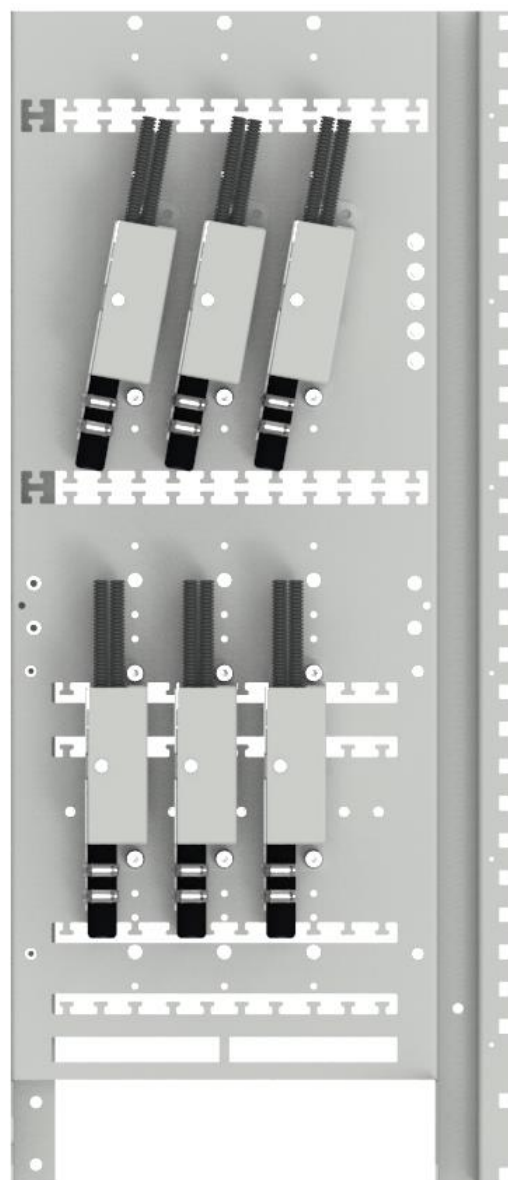
CO-CUB Type	Cable Diameters	Nr. of Flex tubes	Inner Diameters Flex tubes	Fibers per Flex tube	Total Fibers
CO-CUB-M	Up to 24mm	max. 6	ID 12	max. 288	max. 1728
! CABLES ALWAYS NEED TO BE ATTACHED TO THE FRAME. ! FLEX-TUBES are not included in the kit.					

1. Define the position of the CO-CUB in the frame and mark the stripping point of the cable (the divider can be installed under the raised floor if needed)

FIST-GR3

Example CO-CUB-S positions

Almost all positions are possible,
also under an angle.

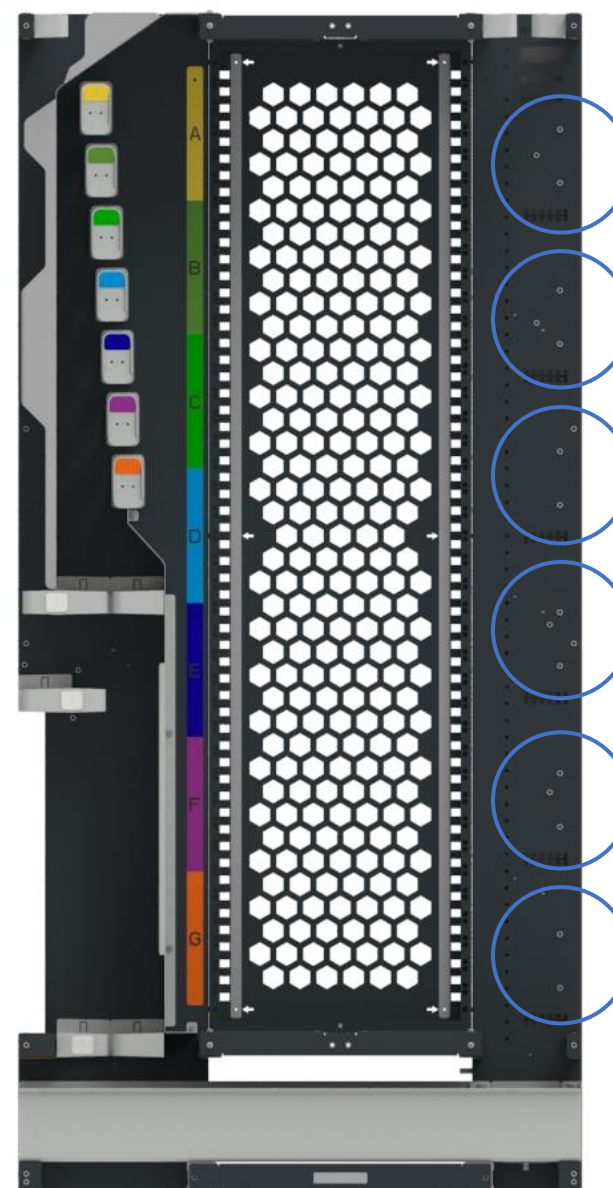


angled
fixation

straight
fixation

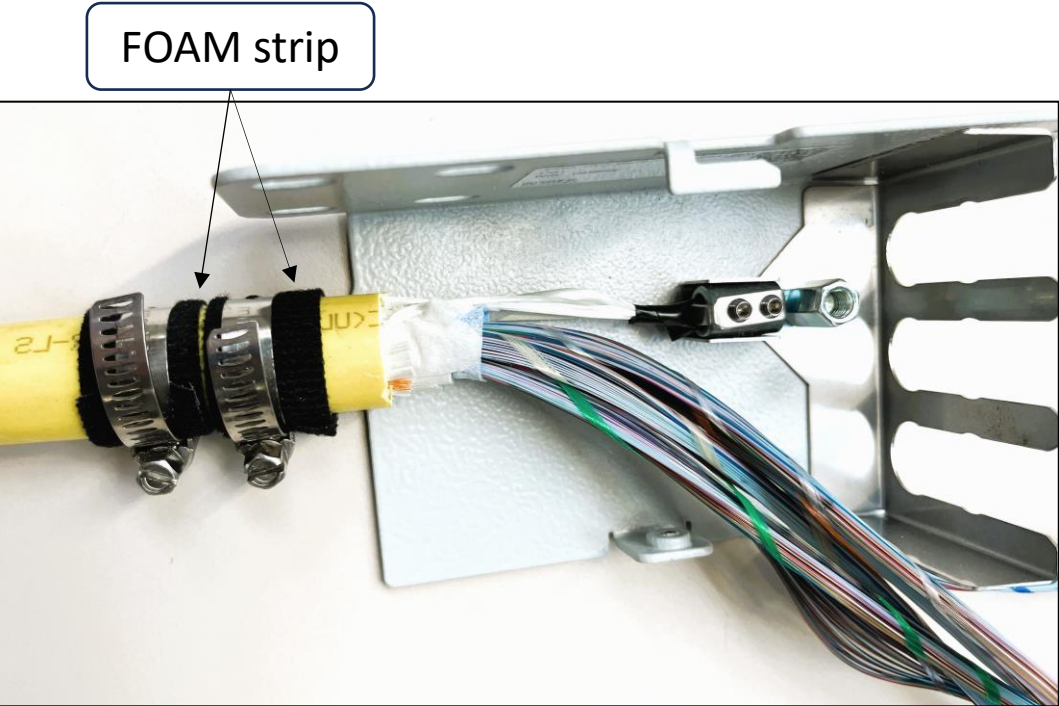
FACT-FRAME

6 positions



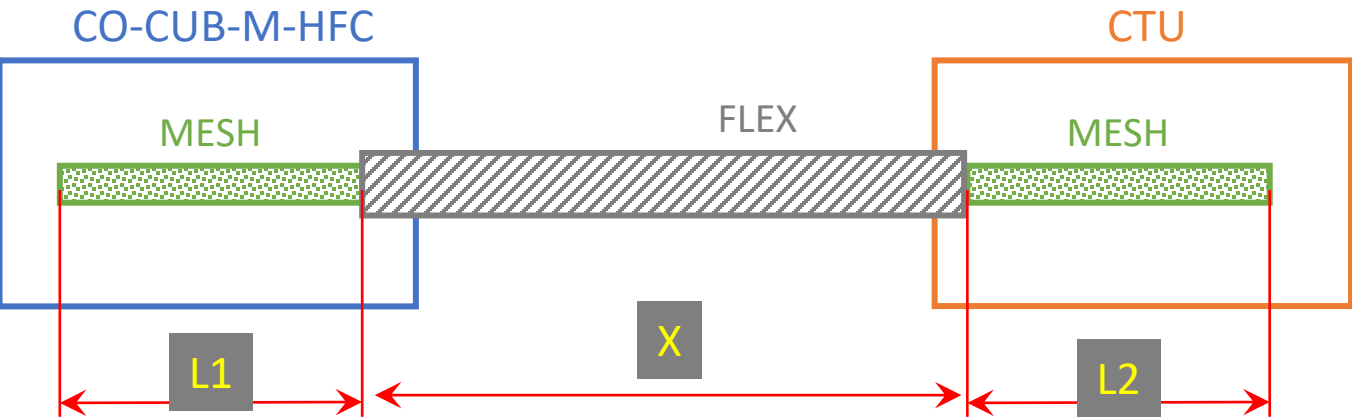
straight
fixation

2. Strip the jacket and cut the strength member (if available) at 70 mm from the end of the jacket, place the foam tape, attach the strength member and mount the cable on the bottom plate with the two hose clamps.

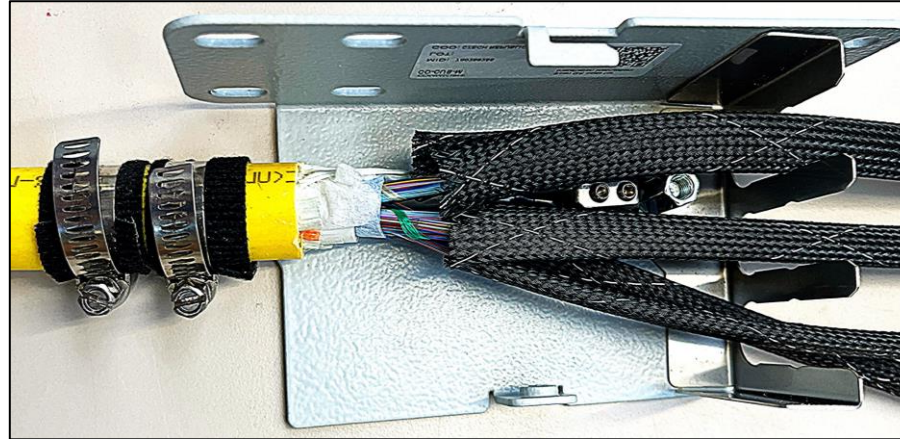


3. Mount the CO-CUB in the frame and measure the flex tubes. Cut the mesh longer than the flex, depending the CTU you are using

FACT CTU kit	L1 length in CO-CUB	L2 length in CTU	total Mesh length = X + L1 + L2
FACT-ACCCTULLT	60mm	190mm	X + 250mm
FACT-FRACCCTUxE	60mm	40mm	X + 100mm



4. Tape the end of the fiber bundle to feed easier trough the meshes. Distribute the fibers into the meshes. Slide them in position in the CO-CUB.
Make sure the fibers are protected for sharp edges by the mesh and routed properly.



5. Slight the Flex over the mesh and attach it in the CO-CUB, fix the other end in the CTU,



6. Close the CO-CUB with the cover



7. Remark: Provide extra cable fixation on the Frame in case of stiff cable.