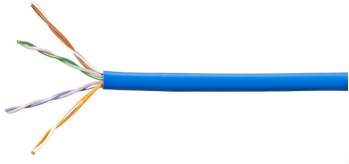


# 6-219590-6 | CS24CM BLU C5E 4/24 U/UTP CPK 305M

---



Copper Cable, category 5e, 4 pair, U/UTP, CM rated, 24 AWG, 1000 ft, blue

## Product Classification

<b>Regional Availability</b>	Asia
<b>Portfolio</b>	NETCONNECT®
<b>Product Type</b>	Twisted pair cable
<b>Product Series</b>	510 Series

## General Specifications

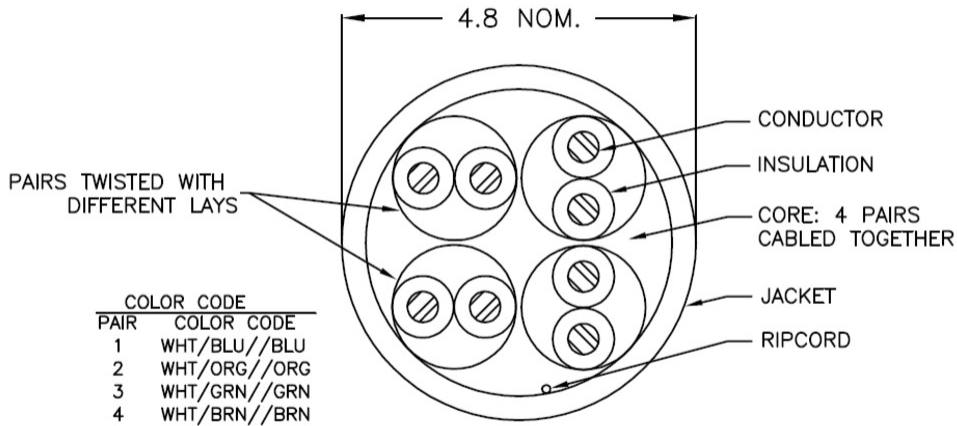
<b>Product Number</b>	510M
<b>ANSI/TIA Category</b>	5e
<b>Cable Component Type</b>	Horizontal
<b>Cable Type</b>	U/UTP (unshielded)
<b>Conductor Type, singles</b>	Solid
<b>Conductors, quantity</b>	8
<b>Jacket Color</b>	Blue
<b>Pairs, quantity</b>	4
<b>Transmission Standards</b>	ANSI/TIA-568.2-D   GENELEC EN 50288-6-1   ISO/IEC 11801 Class D

## Dimensions

<b>Cable Length</b>	304.8 m   1000 ft
<b>Diameter Over Jacket, nominal</b>	4.902 mm   0.193 in
<b>Conductor Gauge, singles</b>	24 AWG

## Cross Section Drawing

# 6-219590-6 | CS24CM BLU C5E 4/24 U/UTP CPK 305M



## Electrical Specifications

### Operating Voltage, maximum

80 V

### Remote Powering

Fully complies with the recommendations set forth by IEEE 802.3bt (Type 4) for the safe delivery of power over LAN cable when installed according to ISO/IEC 14763-2, CENELEC EN 50174-1, CENELEC EN 50174-2 or TIA TSB-184-A

## Electrical Cable Performance

<b>CS</b>	CommScope		
<b>STD</b>	Refers to the standard value listed under Transmission Standards in the Electrical Specifications above		
<b>TYP</b>	Typical Electrical Performance		
<b>IL</b>	Insertion Loss (dB/100m)	<b>NEXT</b>	Near End Crosstalk (dB/100m)
<b>ACR</b>	Attenuation to Crosstalk Ratio (dB/100m)	<b>PSNEXT</b>	Power Sum Near End Crosstalk (db/100m)
<b>PSACR</b>	Power Sum Attenuation to Crosstalk Ratio (dB/100m)	<b>ACRF</b>	Attenuation to Crosstalk Ratio - Far End (dB/100m)
<b>PSACRF</b>	Power Sum Attenuation to Crosstalk Ratio - Far End (dB/100m)	<b>RL</b>	Return Loss (dB)
<b>TCL</b>	Transverse Conversion Loss (dB/100m)	<b>ELTCTL</b>	Equal Level Transverse Conversion Transfer Loss (dB/100m)

Freq. MHz	IL	NEXT	ACR	PSNEXT	PSACR	ACRF	PSACRF	RL
	STD	STD	STD	STD	STD	STD	STD	STD
1	2	65.3	63.3	62.3	60.3	63.8	60.8	20
4	4.1	56.3	52.2	53.3	49.2	51.8	48.8	23
8	5.8	51.8	46	48.8	43	45.7	42.7	24.5
10	6.5	50.3	43.8	47.3	40.8	43.8	40.8	25
16	8.2	47.2	39	44.2	36	39.7	36.7	25
20	9.3	45.8	36.5	42.8	33.5	37.8	34.8	25
25	10.4	44.3	33.9	41.3	30.9	35.8	32.8	24.3
31.25	11.7	42.9	31.2	39.9	28.2	33.9	30.9	23.6
62.5	17	38.4	21.4	35.4	18.4	27.9	24.9	21.5
100	22	35.3	13.3	32.3	10.3	23.8	20.8	20.1

## Material Specifications

<b>Conductor Material</b>	Bare copper
<b>Insulation Material</b>	Polyolefin
<b>Jacket Material</b>	PVC

## Environmental Specifications

<b>Operating Temperature</b>	-20 °C to +60 °C (-4 °F to +140 °F)
------------------------------	-------------------------------------

## Packaging and Weights

<b>Packaging Type</b>	Reelex
-----------------------	--------

## Regulatory Compliance/Certifications

Agency	Classification
CHINA-ROHS	Below maximum concentration value
REACH-SVHC	Compliant as per SVHC revision on <a href="https://www.commscope.com/ProductCompliance">www.commscope.com/ProductCompliance</a>
ROHS	Compliant
UK-ROHS	Compliant

6-219590-6 | CS24CM BLU C5E 4/24 U/UTP CPK  
305M

---

