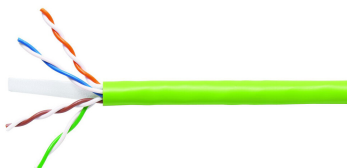


700212061 | 1071E SGR C6 4/23 U/UTP W1000



GigaSPEED XL® 1071E ETL Verified Category 6 U/UTP Cable, non-plenum, spring green jacket, 4 pair count, 1000 ft (305 m) length, WE TOTE® box

Product Classification

Regional Availability	Asia Australia/New Zealand Latin America North America
Portfolio	SYSTIMAX®
Product Type	Twisted pair cable
Product Brand	GigaSPEED XL®
Ordering Note	Not available in Europe, the Middle East, or Africa

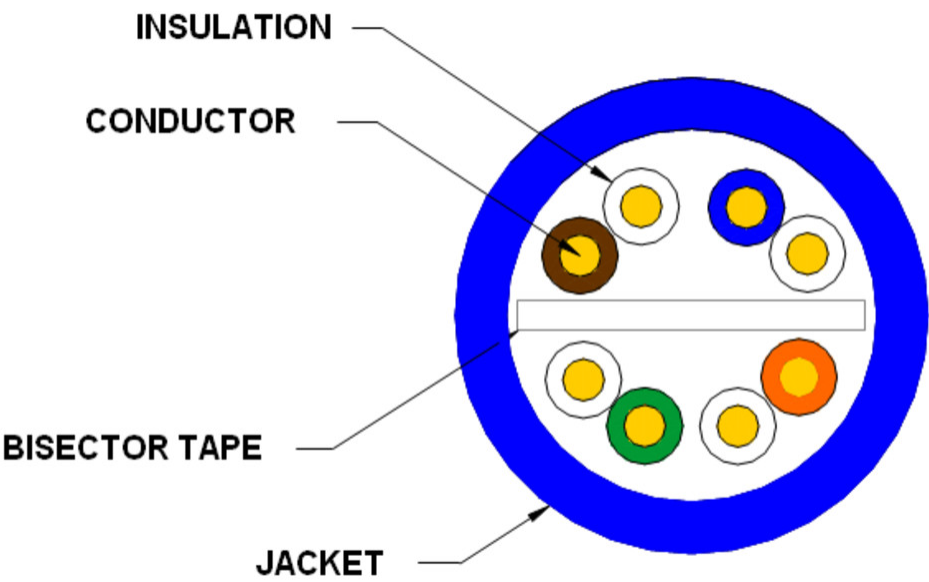
General Specifications

Product Number	1071E
ANSI/TIA Category	6
Cable Component Type	Horizontal
Cable Type	U/UTP (unshielded)
Conductor Type, singles	Solid
Conductors, quantity	8
Jacket Color	Spring green
Pairs, quantity	4
Separator Type	Bisector
Transmission Standards	ANSI/TIA-568.2-D CENELEC EN 50288-6-1 ISO/IEC 11801 Class E

Dimensions

Cable Length	304.8 m 1000 ft
Diameter Over Insulated Conductor	1.029 mm 0.041 in
Diameter Over Jacket, nominal	5.893 mm 0.232 in
Jacket Thickness	0.559 mm 0.022 in
Conductor Gauge, singles	23 AWG

Cross Section Drawing



Electrical Specifications

dc Resistance Unbalance, maximum	5 %
dc Resistance, maximum	7.61 ohms/100 m 2.32 ohms/100 ft
Dielectric Strength, minimum	1500 Vac 2500 Vdc
Mutual Capacitance at Frequency	5.6 nF/100 m @ 1 kHz
Nominal Velocity of Propagation (NVP)	69 %
Operating Frequency, maximum	300 MHz
Operating Voltage, maximum	80 V
Remote Powering	Fully complies with the recommendations set forth by IEEE 802.3bt (Type 4) for the safe delivery of power over LAN cable when installed according to ISO/IEC 14763-2, CENELEC EN 50174-1, CENELEC EN 50174-2 or TIA TSB-184-A

Material Specifications

Conductor Material	Bare copper
Insulation Material	Polyolefin
Jacket Material	PVC
Separator Material	Polyolefin

Mechanical Specifications

Pulling Tension, maximum

11.34 kg | 25 lb

Environmental Specifications

Installation temperature

0 °C to +60 °C (+32 °F to +140 °F)

Operating Temperature

-20 °C to +60 °C (-4 °F to +140 °F)

Environmental Space

Non-plenum

Temperature Rating, UL

75 °C | 167 °F

Flame Test Method

CMG | CMR

Packaging and Weights

Cable weight

38.097 kg/km | 25.6 lb/kft

Packaging Type

WE TOTE® box

Regulatory Compliance/Certifications

Agency	Classification
ISO 9001:2015	Designed, manufactured and/or distributed under this quality management system
REACH-SVHC	Compliant as per SVHC revision on www.commscope.com/ProductCompliance
ROHS	Compliant
UK-ROHS	Compliant