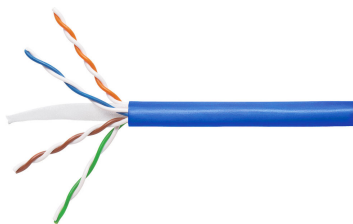


# 700216484 | 3071E BLU C6 4/23 U/UTP R1000



GigaSPEED XL® 3071 ETL Verified Category 6 U/UTP Cable, low smoke zero halogen, blue jacket, 4 pair count, 1000 ft (305 m) length, reel

## Product Classification

|                              |   |
|------------------------------|---|
| <b>Regional Availability</b> | Asia   Australia/New Zealand   EMEA   Latin America |
| <b>Portfolio</b>             | SYSTIMAX®   |
| <b>Product Type</b>          | Twisted pair cable                                  |
| <b>Product Brand</b>         | GigaSPEED XL®                                       |

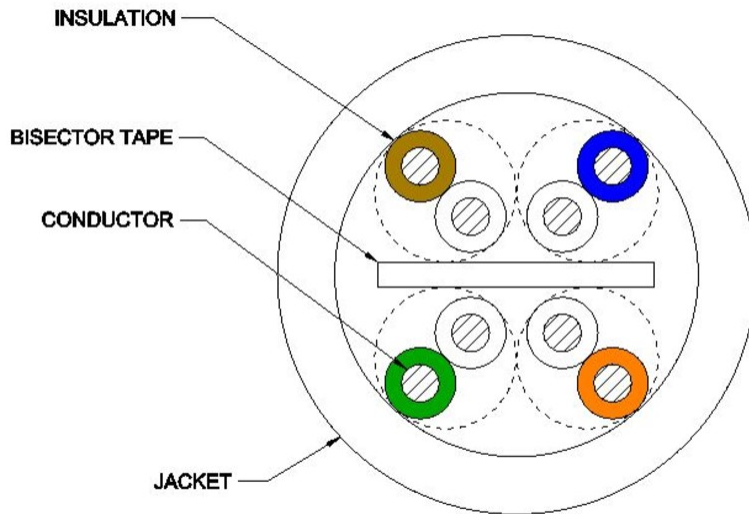
## General Specifications

|                                |   |
|--------------------------------|---|
| <b>Product Number</b>          | 3071E   |
| <b>ANSI/TIA Category</b>       | 6   |
| <b>Cable Component Type</b>    | Horizontal  |
| <b>Cable Type</b>              | U/UTP (unshielded)  |
| <b>Conductor Type, singles</b> | Solid   |
| <b>Conductors, quantity</b>    | 8   |
| <b>Jacket Color</b>            | Blue  |
| <b>Pairs, quantity</b>         | 4   |
| <b>Separator Type</b>          | Bisector  |
| <b>Transmission Standards</b>  | ANSI/TIA-568.2-D   CENELEC EN 50288-6-1   ISO/IEC 11801 Class E |

## Dimensions

|  |                     |
|--|---------------------|
| <b>Cable Length</b>                      | 304.8 m   1000 ft   |
| <b>Diameter Over Insulated Conductor</b> | 1.041 mm   0.041 in |
| <b>Diameter Over Jacket, nominal</b>     | 5.918 mm   0.233 in |
| <b>Jacket Thickness</b>                  | 0.508 mm   0.02 in  |
| <b>Conductor Gauge, singles</b>          | 23 AWG              |

## Cross Section Drawing



## Electrical Specifications

|  |   |
|--|---|
| <b>dc Resistance Unbalance, maximum</b>      | 5 %   |
| <b>dc Resistance, maximum</b>                | 7.61 ohms/100 m   2.32 ohms/100 ft  |
| <b>Dielectric Strength, minimum</b>          | 2500 Vdc  |
| <b>Mutual Capacitance at Frequency</b>       | 5.6 nF/100 m @ 1 kHz  |
| <b>Nominal Velocity of Propagation (NVP)</b> | 70 %  |
| <b>Operating Frequency, maximum</b>          | 300 MHz   |
| <b>Operating Voltage, maximum</b>            | 80 V  |
| <b>Remote Powering</b>                       | Fully complies with the recommendations set forth by IEEE 802.3bt (Type 4) for the safe delivery of power over LAN cable when installed according to ISO/IEC 14763-2, CENELEC EN 50174-1, CENELEC EN 50174-2 or TIA TSB-184-A |
| <b>Segregation Class</b>                     | c   |

## Material Specifications

|                            |                               |
|----------------------------|-------------------------------|
| <b>Conductor Material</b>  | Bare copper                   |
| <b>Insulation Material</b> | Polyolefin                    |
| <b>Jacket Material</b>     | Low Smoke Zero Halogen (LSZH) |
| <b>Separator Material</b>  | Polyolefin                    |

# 700216484 | 3071E BLU C6 4/23 U/UTP R1000

---

## Mechanical Specifications

**Pulling Tension, maximum** 11.34 kg | 25 lb

## Environmental Specifications

**Installation temperature** 0 °C to +60 °C (+32 °F to +140 °F)

**Operating Temperature** -20 °C to +60 °C (-4 °F to +140 °F)

**Acid Gas Test Method** IEC 60754-2

**EN50575 CPR Cable EuroClass Fire Performance** Dca

**EN50575 CPR Cable EuroClass Smoke Rating** s2

**EN50575 CPR Cable EuroClass Droplets Rating** d2

**EN50575 CPR Cable EuroClass Acidity Rating** a1

**Environmental Space** Low Smoke Zero Halogen (LSZH)

**Flame Test Method** IEC 60332-3-22

**Smoke Test Method** IEC 61034-2

## Packaging and Weights

**Cable weight** 37.204 kg/km | 25 lb/kft

**Packaging Type** Reel

## Regulatory Compliance/Certifications

| Agency        | Classification   |
|---------------|--|
| CENELEC       | EN 50575 compliant, Declaration of Performance (DoP) available   |
| CHINA-ROHS    | Below maximum concentration value  |
| ISO 9001:2015 | Designed, manufactured and/or distributed under this quality management system   |
| REACH-SVHC    | Compliant as per SVHC revision on <a href="http://www.commscope.com/ProductCompliance">www.commscope.com/ProductCompliance</a> |
| ROHS          | Compliant  |
| UK-ROHS       | Compliant  |

