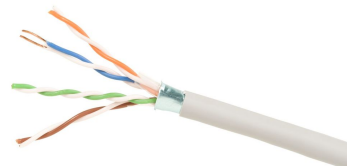


# 760031088 | 1261F SL 4/24 R1000

---



Category 5e F/UTP 1261F Cable, non-plenum, slate jacket, 4 pair count, 1000 ft (305 m) length, reel

## Product Classification

<b>Regional Availability</b>	Asia   Australia/New Zealand   Latin America   North America
<b>Portfolio</b>	SYSTIMAX®
<b>Product Type</b>	Twisted pair cable

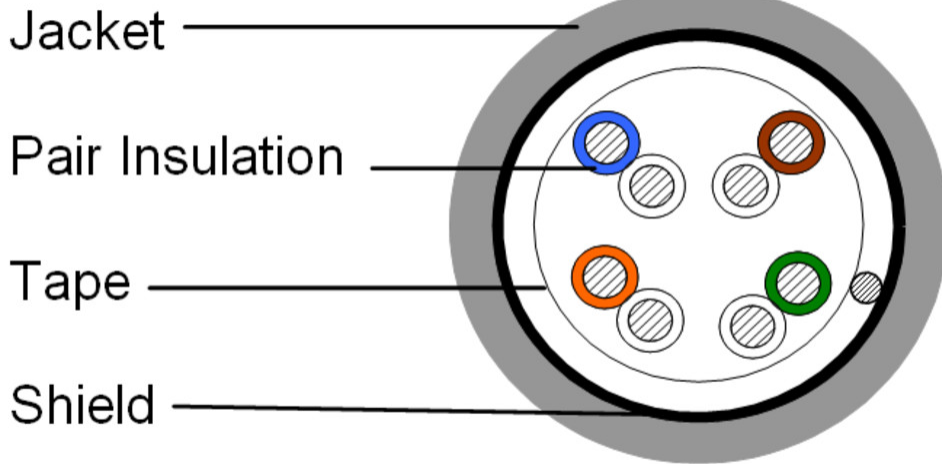
## General Specifications

<b>Product Number</b>	1261F
<b>ANSI/TIA Category</b>	5e
<b>Cable Component Type</b>	Horizontal
<b>Cable Type</b>	F/UTP (shielded)
<b>Conductor Type, singles</b>	Solid
<b>Conductors, quantity</b>	8
<b>Drain Wire Type</b>	Solid
<b>Jacket Color</b>	Slate
<b>Pairs, quantity</b>	4
<b>Transmission Standards</b>	ANSI/TIA-568.2-D   CENELEC EN 50288-3-1   ISO/IEC 11801 Class D

## Dimensions

<b>Cable Length</b>	304.8 m   1000 ft
<b>Diameter Over Jacket, nominal</b>	6.147 mm   0.242 in
<b>Jacket Thickness</b>	0.508 mm   0.02 in
<b>Conductor Gauge, singles</b>	24 AWG
<b>Drain Wire Gauge</b>	26 AWG

## Cross Section Drawing



## Electrical Specifications

<b>dc Resistance Unbalance, maximum</b>	5 %
<b>dc Resistance, maximum</b>	9.38 ohms/100 m   2.859 ohms/100 ft
<b>Dielectric Strength, minimum</b>	1500 Vac   2500 Vdc
<b>Mutual Capacitance at Frequency</b>	5.6 nF/100 m @ 1 kHz
<b>Nominal Velocity of Propagation (NVP)</b>	69 %
<b>Operating Frequency, maximum</b>	100 MHz
<b>Operating Voltage, maximum</b>	80 V
<b>Remote Powering</b>	Fully complies with the recommendations set forth by IEEE 802.3bt (Type 4) for the safe delivery of power over LAN cable when installed according to ISO/IEC 14763-2, CENELEC EN 50174-1, CENELEC EN 50174-2 or TIA TSB-184-A

## Material Specifications

<b>Conductor Material</b>	Bare copper
<b>Drain Wire Material</b>	Tinned copper
<b>Insulation Material</b>	Polyolefin
<b>Jacket Material</b>	PVC
<b>Shield (Tape) Material</b>	Polyester/Aluminum tape

## Mechanical Specifications

<b>Pulling Tension, maximum</b>	11.34 kg   25 lb
---------------------------------	------------------

# 760031088 | 1261F SL 4/24 R1000

---

## Environmental Specifications

<b>Installation temperature</b>	0 °C to +60 °C (+32 °F to +140 °F)
<b>Operating Temperature</b>	-20 °C to +60 °C (-4 °F to +140 °F)
<b>Environmental Space</b>	Non-plenum
<b>Flame Test Method</b>	CMR

## Packaging and Weights

<b>Cable weight</b>	40.18 kg/km   27 lb/kft
<b>Packaging Type</b>	Reel

## Regulatory Compliance/Certifications

<b>Agency</b>	<b>Classification</b>
ISO 9001:2015	Designed, manufactured and/or distributed under this quality management system