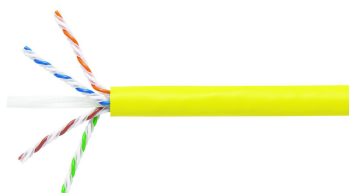


# 760105825 | 1091B YEL C6A 4/23 U/UTP R1000



GigaSPEED X10D® 1091B ETL Verified Category 6A U/UTP Cable, yellow jacket, 4 pair count, 1000 ft (305 m) length, reel

## Product Classification

<b>Regional Availability</b>	Asia   Australia/New Zealand   Latin America   North America
<b>Portfolio</b>	SYSTIMAX®
<b>Product Type</b>	Twisted pair cable
<b>Product Brand</b>	GigaSPEED X10D®

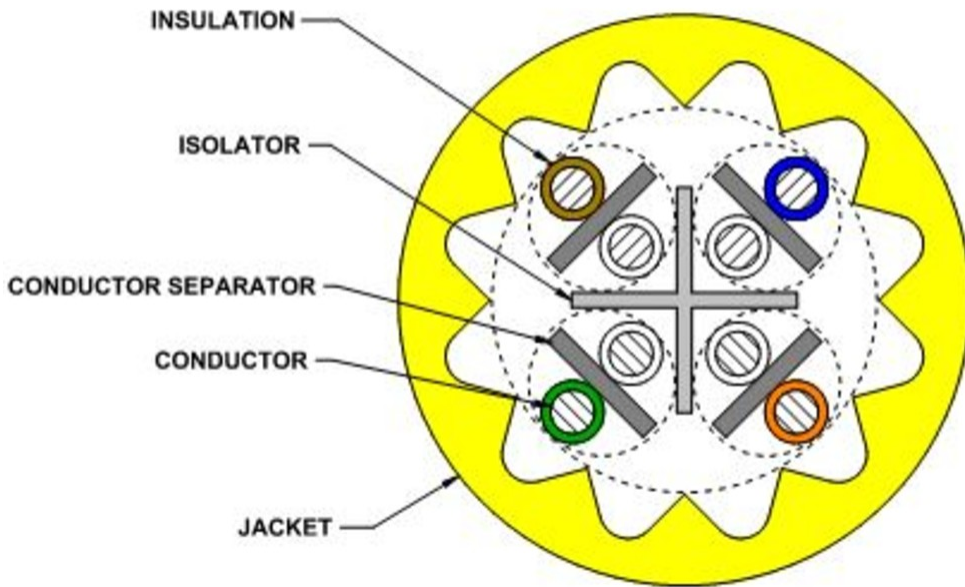
## General Specifications

<b>Product Number</b>	1091B
<b>ANSI/TIA Category</b>	6A
<b>Cable Component Type</b>	Horizontal
<b>Cable Type</b>	U/UTP (unshielded)
<b>Conductor Type, singles</b>	Solid
<b>Conductors, quantity</b>	8
<b>Jacket Color</b>	Yellow
<b>Pairs, quantity</b>	4
<b>Separator Type</b>	Isolator
<b>Transmission Standards</b>	ANSI/TIA-568.2-D   ISO/IEC 11801 Class EA

## Dimensions

<b>Cable Length</b>	304.8 m   1000 ft
<b>Diameter Over Insulated Conductor</b>	0.864 mm   0.034 in
<b>Diameter Over Jacket, nominal</b>	7.239 mm   0.285 in
<b>Jacket Thickness</b>	1.295 mm   0.051 in
<b>Conductor Gauge, singles</b>	23 AWG

## Cross Section Drawing



## Electrical Specifications

<b>Characteristic Impedance</b>	100 ohm
<b>Characteristic Impedance Tolerance</b>	±15 ohm
<b>dc Resistance Unbalance, maximum</b>	4 %
<b>dc Resistance, maximum</b>	7.61 ohms/100 m   2.32 ohms/100 ft
<b>Dielectric Strength, minimum</b>	1500 Vac   2500 Vdc
<b>LP (Limited Power) Rating</b>	0.5 A
<b>Mutual Capacitance at Frequency</b>	6.0 nF/100 m @ 1 kHz
<b>Nominal Velocity of Propagation (NVP)</b>	65 %
<b>Operating Frequency, maximum</b>	550 MHz
<b>Operating Voltage, maximum</b>	80 V
<b>Remote Powering</b>	Fully complies with the recommendations set forth by IEEE 802.3bt (Type 4) for the safe delivery of power over LAN cable when installed according to ISO/IEC 14763-2, CENELEC EN 50174-1, CENELEC EN 50174-2 or TIA TSB-184-A

## Material Specifications

<b>Conductor Material</b>	Bare copper
<b>Insulation Material</b>	Polyolefin

# 760105825 | 1091B YEL C6A 4/23 U/UTP R1000

---

<b>Jacket Material</b>	PVC
<b>Separator Material</b>	Polyolefin
<b>Separator 2 Material</b>	Polyolefin

## Mechanical Specifications

<b>Pulling Tension, maximum</b>	11.34 kg   25 lb
---------------------------------	------------------

## Environmental Specifications

<b>Installation temperature</b>	0 °C to +60 °C (+32 °F to +140 °F)
<b>Operating Temperature</b>	-20 °C to +60 °C (-4 °F to +140 °F)
<b>Environmental Space</b>	Non-plenum
<b>Temperature Rating, UL</b>	90 °C   194 °F
<b>Flame Test Method</b>	CMR

## Packaging and Weights

<b>Cable weight</b>	55.509 kg/km   37.3 lb/kft
<b>Packaging Type</b>	Reel

## Regulatory Compliance/Certifications

<b>Agency</b>	<b>Classification</b>
CHINA-ROHS	Below maximum concentration value
ISO 9001:2015	Designed, manufactured and/or distributed under this quality management system
REACH-SVHC	Compliant as per SVHC revision on <a href="http://www.commscope.com/ProductCompliance">www.commscope.com/ProductCompliance</a>
ROHS	Compliant
UK-ROHS	Compliant

