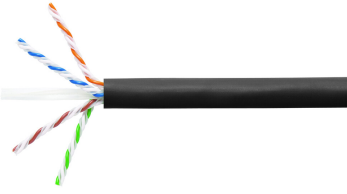


# 760199315 | 3091B BLK C6A 4/23 U/UTP W1000



GigaSPEED X10D® 3091B ETL Verified Category 6A U/UTP Cable, black jacket, 4 pair count, 1,000 ft (305 m) WE TOTE® box

## Product Classification

<b>Regional Availability</b>	Asia   Australia/New Zealand   EMEA   Latin America
<b>Portfolio</b>	SYSTIMAX®
<b>Product Type</b>	Twisted pair cable
<b>Product Brand</b>	GigaSPEED X10D®

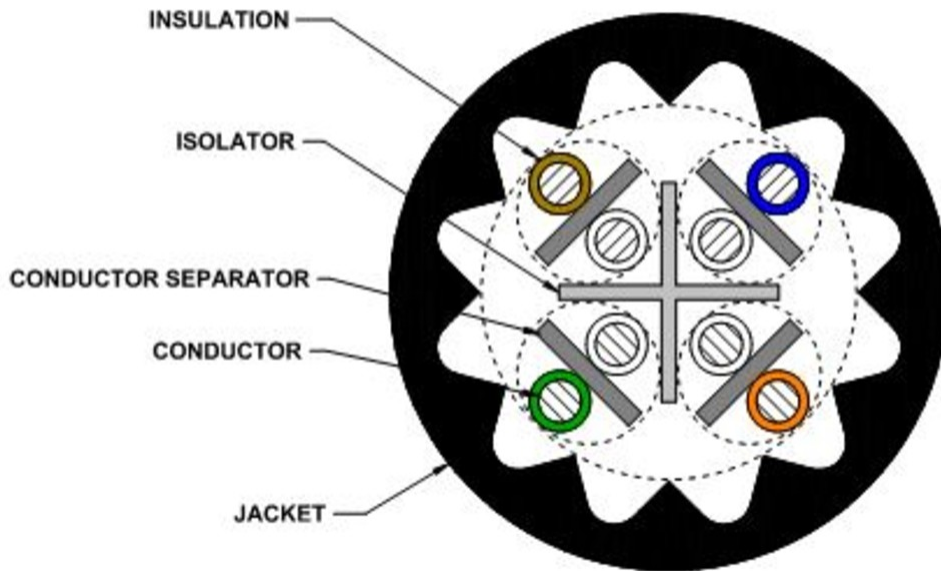
## General Specifications

<b>Product Number</b>	3091B
<b>ANSI/TIA Category</b>	6A
<b>Cable Component Type</b>	Horizontal
<b>Cable Type</b>	U/UTP (unshielded)
<b>Conductor Type, singles</b>	Solid
<b>Conductors, quantity</b>	8
<b>Jacket Color</b>	Black
<b>Pairs, quantity</b>	4
<b>Separator Type</b>	Isolator
<b>Transmission Standards</b>	ANSI/TIA-568.2-D

## Dimensions

<b>Cable Length</b>	304.8 m   1000 ft
<b>Diameter Over Insulated Conductor</b>	0.864 mm   0.034 in
<b>Diameter Over Jacket, nominal</b>	7.239 mm   0.285 in
<b>Jacket Thickness</b>	1.295 mm   0.051 in
<b>Conductor Gauge, singles</b>	23 AWG

## Cross Section Drawing



## Electrical Specifications

<b>dc Resistance Unbalance, maximum</b>	4 %
<b>dc Resistance, maximum</b>	7.61 ohms/100 m   2.32 ohms/100 ft
<b>Dielectric Strength, minimum</b>	2500 Vdc
<b>Mutual Capacitance at Frequency</b>	6.0 nF/100 m @ 1 kHz
<b>Nominal Velocity of Propagation (NVP)</b>	67 %
<b>Operating Frequency, maximum</b>	550 MHz
<b>Operating Voltage, maximum</b>	80 V
<b>Remote Powering</b>	Fully complies with the recommendations set forth by IEEE 802.3bt (Type 4) for the safe delivery of power over LAN cable when installed according to ISO/IEC 14763-2, CENELEC EN 50174-1, CENELEC EN 50174-2 or TIA TSB-184-A
<b>Segregation Class</b>	c

## Material Specifications

<b>Conductor Material</b>	Bare copper
<b>Insulation Material</b>	Polyolefin
<b>Jacket Material</b>	Low Smoke Zero Halogen (LSZH)
<b>Separator Material</b>	Polyolefin
<b>Separator 2 Material</b>	Polyolefin

# 760199315 | 3091B BLK C6A 4/23 U/UTP W1000

---

## Mechanical Specifications

**Pulling Tension, maximum** 11.34 kg | 25 lb

## Environmental Specifications

**Installation temperature** 0 °C to +60 °C (+32 °F to +140 °F)

**Operating Temperature** -20 °C to +60 °C (-4 °F to +140 °F)

**Acid Gas Test Method** IEC 60754-2

**EN50575 CPR Cable EuroClass Fire Performance** Dca

**EN50575 CPR Cable EuroClass Smoke Rating** s2

**EN50575 CPR Cable EuroClass Droplets Rating** d2

**EN50575 CPR Cable EuroClass Acidity Rating** a1

**Environmental Space** Low Smoke Zero Halogen (LSZH)

**Flame Test Method** IEC 60332-3-22

**Smoke Test Method** IEC 61034-2

## Packaging and Weights

**Cable weight** 54.913 kg/km | 36.9 lb/kft

**Packaging Type** WE TOTE® box

## Regulatory Compliance/Certifications

Agency	Classification
CHINA-ROHS	Below maximum concentration value
ISO 9001:2015	Designed, manufactured and/or distributed under this quality management system
REACH-SVHC	Compliant as per SVHC revision on <a href="http://www.commscope.com/ProductCompliance">www.commscope.com/ProductCompliance</a>
ROHS	Compliant
UK-ROHS	Compliant

