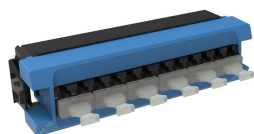


InstaPATCH® 360, TeraSPEED® SYSTIMAX 360 Distribution Panel 12 LC Blue iPatch Ready



## Product Classification

<b>Regional Availability</b>	Asia   Australia/New Zealand   EMEA   Latin America   North America
<b>Portfolio</b>	SYSTIMAX®
<b>Product Type</b>	Fiber adapter pack

## General Specifications

<b>Application</b>	Used in conjunction with G2 1U, 2U and 4U MOD panel shelves, surface mount and raised floor enclosures
<b>Adapter Color</b>	Blue
<b>Body Style</b>	Ganged
<b>Intelligence Type</b>	iPatch® ready
<b>Interface</b>	LC/UPC
<b>Interface Feature</b>	Dust caps
<b>Pigtails Included, quantity</b>	0
<b>Shuttered</b>	No
<b>Total Ports, quantity</b>	12

## Optical Specifications

<b>Fiber Mode</b>	Singlemode
-------------------	------------

## Regulatory Compliance/Certifications

<b>Agency</b>	<b>Classification</b>
CHINA-ROHS	Below maximum concentration value
ISO 9001:2015	Designed, manufactured and/or distributed under this quality management system
REACH-SVHC	Compliant as per SVHC revision on <a href="http://www.commscope.com/ProductCompliance">www.commscope.com/ProductCompliance</a>

760242976 | 360DPiP-12LC-SM

---

ROHS

Compliant

UK-ROHS

Compliant

