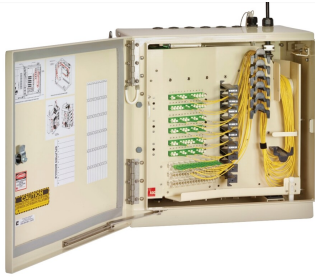


FD3-MM144J00V00E0B



IFDH 3000 Indoor Fiber Distribution Hub, 144F, SC/APC, loose tube /stranded pigtails, spliced input/dist., 24FF

Product Classification

| | |
|------------------------------|------------------------|
| Regional Availability | North America |
| Product Type | Fiber distribution hub |
| Product Series | IFDH 3000 |

General Specifications

| | |
|--|---------------------|
| Functionality | Patching Splicing |
| Access | Front |
| Adapters, quantity | 144 |
| Cable Type | Pigtails - Stranded |
| Color | Putty white |
| Distribution Cables, quantity | 12 |
| Fibers per Distribution Cable, quantity | 12 |
| Fibers per Feeder Cable, quantity | 24 |
| Front Door Type | Single hinged |
| Interface | SC/APC |
| Mounting | Wall |
| Port, quantity | 144 |
| Splitter Slots, quantity | 18 |

Dimensions

| | |
|-----------------------|--------------------|
| Height | 736.6 mm 29 in |
| Width | 533.4 mm 21 in |
| Depth | 368.3 mm 14.5 in |
| Cable Length | 30.48 m 100 ft |
| Enclosure Size | Medium |

FD3-MM144J00V00E0B

Material Specifications

| | |
|----------------------|---------------|
| Finish | Powder coated |
| Material Type | Aluminum |

Optical Specifications

| | |
|-------------------|------------|
| Fiber Mode | Singlemode |
|-------------------|------------|

Environmental Specifications

| | |
|----------------------------|--------|
| Environmental Space | Indoor |
|----------------------------|--------|

Packaging and Weights

| | |
|---------------------------|---|
| Packaging quantity | 1 |
|---------------------------|---|

Regulatory Compliance/Certifications

| Agency | Classification |
|---------------|--|
| CHINA-ROHS | Above maximum concentration value |
| REACH-SVHC | Compliant as per SVHC revision on www.commscope.com/ProductCompliance |
| ROHS | Compliant/Exempted |
| UK-ROHS | Compliant/Exempted |

