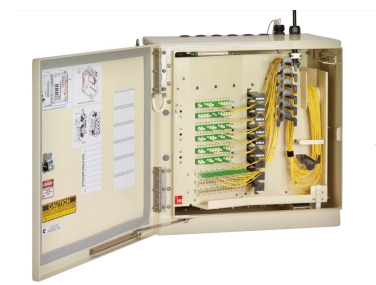


# FD3-MM288J2AV00E0B



IFDH 3000 Indoor Fiber Distribution Hub, 288F, SC/APC, 2 split. mods. /1x32 std., LT/stranded pigtails, splcd. Inpt., 24F fdr.

## Product Classification

Regional Availability	North America
Product Type	Fiber distribution hub
Product Series	IFDH 3000

## General Specifications

Functionality	Patching   Splicing
Access	Front
Adapters, quantity	288
Cable Type	Pigtails - Stranded
Color	Putty white
Distribution Cables, quantity	24
Fibers per Distribution Cable, quantity	12
Fibers per Feeder Cable, quantity	24
Front Door Type	Single hinged
Interface	SC/APC
Mounting	Wall
Port, quantity	288
Splitter Slots, quantity	18
Splitter, quantity	2

## Dimensions

Height	736.6 mm   29 in
Width	533.4 mm   21 in
Depth	368.3 mm   14.5 in
Cable Length	30.48 m   100 ft

# FD3-MM288J2AV00E0B

Enclosure Size		Medium
Material Specifications		
Finish		Powder coated
Material Type		Aluminum
Optical Specifications		
Fiber Mode		Singlemode
Environmental Specifications		
Environmental Space		Indoor
Packaging and Weights		
Packaging quantity		1
Regulatory Compliance/Certifications		
Agency	Classification	
CHINA-ROHS	Above maximum concentration value	
REACH-SVHC	Compliant as per SVHC revision on <a href="http://www.commscope.com/ProductCompliance">www.commscope.com/ProductCompliance</a>	
ROHS	Compliant/Exempted	
UK-ROHS	Compliant/Exempted	

