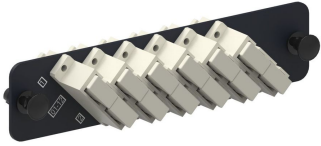


Adapter Pack, Black, 1000-Type, with 6 OptiSPEED® Multimode duplex SC adapters, beige



## Product Classification

<b>Regional Availability</b>	Asia   Australia/New Zealand   EMEA   Latin America   North America
<b>Portfolio</b>	CommScope®
<b>Product Type</b>	Fiber adapter pack
<b>Product Brand</b>	OptiSPEED®
<b>Product Series</b>	1000-style

## General Specifications

<b>Application</b>	Used in conjunction with G2 1U, 2U and 4U adapter panel shelves, surface mount and raised floor enclosures   Used in conjunction with panels and enclosures (rack, wall, and floor mount) that accept 1000 style panels
<b>Adapter Color</b>	Beige
<b>Adapter Cutout, quantity</b>	12
<b>Adapters, quantity</b>	6
<b>Body Style</b>	Duplex
<b>Interface</b>	SC/UPC
<b>Pigtails Included, quantity</b>	0
<b>Shuttered</b>	No
<b>Total Ports, quantity</b>	6

## Optical Specifications

<b>Fiber Mode</b>	Multimode
-------------------	-----------

## Regulatory Compliance/Certifications

Agency	Classification
--------	----------------

# 760021790 | PNL-BK-012-MFA-SC02-BG

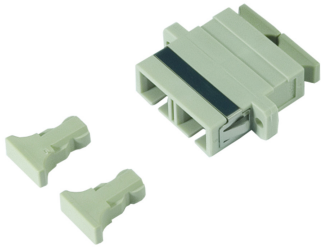
---

CHINA-ROHS	Below maximum concentration value
ISO 9001:2015	Designed, manufactured and/or distributed under this quality management system
REACH-SVHC	Compliant as per SVHC revision on <a href="http://www.commscope.com/ProductCompliance">www.commscope.com/ProductCompliance</a>
ROHS	Compliant
UK-ROHS	Compliant



## Included Products

700004880	–	OptiSPEED® SC Duplex Adapter, Beige, Single
MFA-SC02-BG		Pack



OptiSPEED® SC Duplex Adapter, Beige, Single Pack

## Product Classification

<b>Regional Availability</b>	Asia   Australia/New Zealand   EMEA   Latin America   North America
<b>Portfolio</b>	CommScope®
<b>Product Type</b>	Fiber adapter
<b>Product Brand</b>	OptiSPEED®
<b>Product Series</b>	MFA

## General Specifications

<b>Body Style</b>	Duplex
<b>Color</b>	Beige
<b>Interface</b>	SC/UPC
<b>Mounting</b>	Flange
<b>Shuttered</b>	No
<b>Total Ports, quantity</b>	2
<b>Transmission Standards</b>	TIA/EIA-568-B.3   TIA/EIA-604 FOCIS-3

## Material Specifications

<b>Alignment Sleeve Material</b>	Phosphorous bronze
----------------------------------	--------------------

## Optical Specifications

<b>Fiber Mode</b>	Multimode
-------------------	-----------

## Packaging and Weights

<b>Packaging quantity</b>	1
---------------------------	---

## Regulatory Compliance/Certifications

<b>Agency</b>	<b>Classification</b>
CHINA-ROHS	Below maximum concentration value

# 700004880 | MFA-SC02-BG

---

ISO 9001:2015	Designed, manufactured and/or distributed under this quality management system
REACH-SVHC	Compliant as per SVHC revision on <a href="http://www.commscope.com/ProductCompliance">www.commscope.com/ProductCompliance</a>
ROHS	Compliant
UK-ROHS	Compliant

