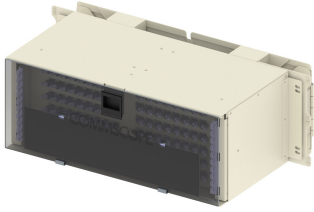


FCM-Z70000



FDF Fiber Termination Chassis, 144 SC/UPC, singlemode, 8 in x 23 in, putty white

Product Classification

Regional Availability	Latin America North America
Portfolio	CommScope®
Product Type	Fiber patch chassis
Product Series	FDF

General Specifications

Functionality	Patching
Application	Used in rear-load FDF-style frames only
Body Style	Symmetrical
Color	Putty white
Growth Configuration	Fully loaded
Interface, front	SC/UPC
Patch Cord Entry Location	Front, left side Front, right side
Rack Type	EIA 23 in
Rack Units	4.6
Shelf Movement	Fixed
Total Ports, quantity	144

Dimensions

Height	203.2 mm 8 in
Width	584.2 mm 23 in
Depth	304.8 mm 12 in

Material Specifications

Finish	Powder coated
Material Type	Steel

FCM-Z70000

Optical Specifications

Fiber Mode Singlemode

Environmental Specifications

Operating Temperature -40 °C to +70 °C (-40 °F to +158 °F)

Packaging and Weights

Included Mounting hardware

Packaging quantity 1

Regulatory Compliance/Certifications

Agency	Classification
CHINA-ROHS	Below maximum concentration value
REACH-SVHC	Compliant as per SVHC revision on www.commscope.com/ProductCompliance
ROHS	Compliant
UK-ROHS	Compliant

