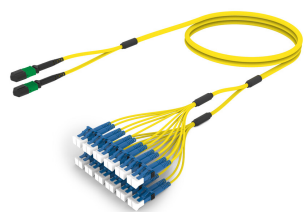


F4WMPLCAF

Base Product



Singlemode MPO (Unpinned) to LC/UPC, InstaPATCH® 360 Ruggedized Fanout Cable, 24-Fiber, Low Smoke Zero Halogen B2ca

OBSOLETE

This product was discontinued on: October 7, 2024

Product Classification

Regional Availability	Europe
Portfolio	CommScope®
Product Type	Ruggedized fanout
Product Brand	SYSTIMAX InstaPATCH® 360
Ordering Note	For lengths greater than 999 ft (304 m), orders must be in meters Minimum length may vary based on cable configuration Not available in the United States or Canada

General Specifications

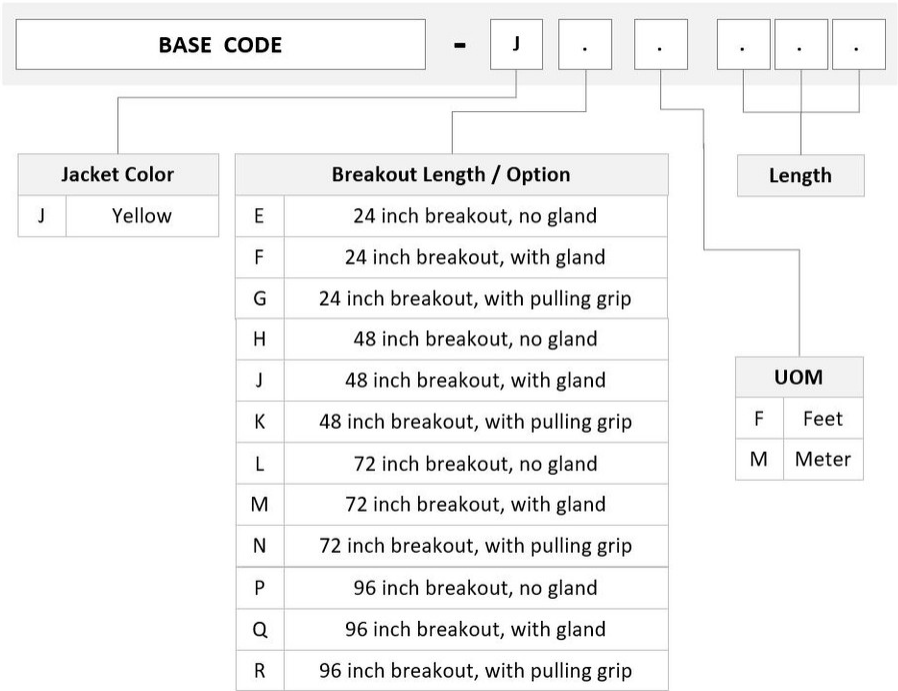
Color, boot A	Black
Color, connector A	Green
Color, boot B	Blue
Color, connector B	Blue
Construction Type	Stranded
Furcation Color	Yellow
Interface, Connector A	MPO-12/APC Female
Interface, Connector B	LC/UPC
Jacket Color	Yellow
Polarity	Method B (LL)
Fibers per Subunit, quantity	12
Total Fibers, quantity	24

Dimensions

F4WMPLCAF

Cable Assembly Length Range (m)	3 – 999
Cable Assembly Length Range (ft)	7 – 999

Ordering Tree



Mechanical Specifications

Cable Retention Strength, maximum	11.24 lb @ 0 ° 4.40 lb @ 90 °
-----------------------------------	---------------------------------

Optical Specifications

Fiber Mode	Singlemode
Fiber Type	G.652.D G.657.A1, TeraSPEED®

Environmental Specifications

Operating Temperature	-10 °C to +60 °C (+14 °F to +140 °F)
EN50575 CPR Cable EuroClass Fire Performance	B2ca
Environmental Space	Indoor Low Smoke Zero Halogen (LSZH)

Regulatory Compliance/Certifications

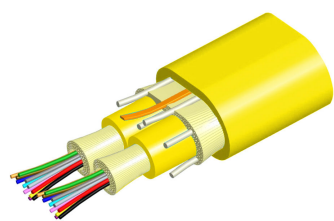
F4WMPLCAF

Agency	Classification
ANATEL	Compliant
CHINA-ROHS	Below maximum concentration value
ISO 9001:2015	Designed, manufactured and/or distributed under this quality management system
REACH-SVHC	Compliant as per SVHC revision on www.commscope.com/ProductCompliance
ROHS	Compliant
UK-ROHS	Compliant



Included Products

760239612 N-024-MP-8W-F12YL/B2	- Fiber indoor cable, TeraSPEED® Low Smoke Zero Halogen Riser MPO Trunk, 24 fibers, 12 fiber subunits, Singlemode G.652.D and G.657.A1, Gel-free, Feet jacket marking, Yellow jacket color, B2ca Flame rating
860366137	- MPO12, LOW LOSS, FEMALE, Singlemode, GREEN, 3mm
860637435	- LC/UPC Connector, Singlemode, Blue, Short Boot



Fiber indoor cable, TeraSPEED® Low Smoke Zero Halogen Riser MPO Trunk, 24 fibers, 12 fiber subunits, Singlemode G.652.D and G.657.A1, Gel-free, Feet jacket marking, Yellow jacket color, B2ca Flame rating

Product Classification

Regional Availability	Asia EMEA
Portfolio	CommScope®
Product Type	Fiber indoor cable
Product Series	N-MP

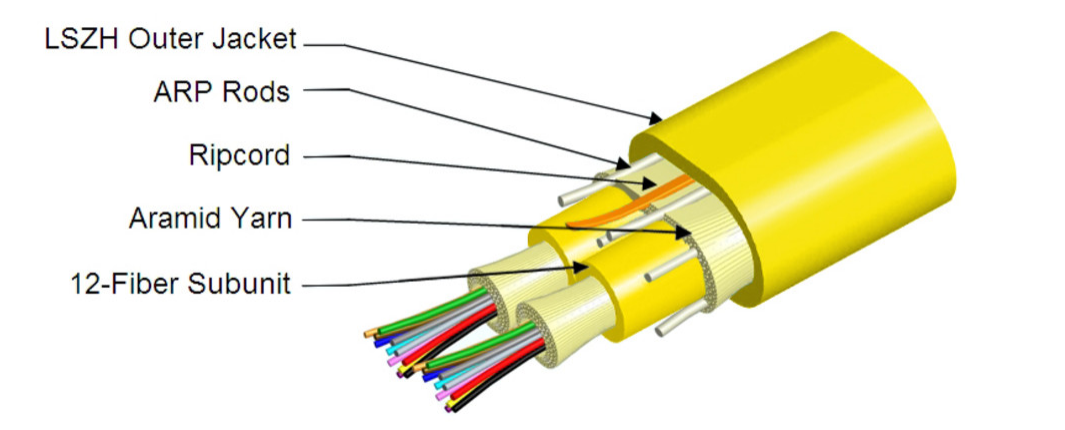
General Specifications

Cable Type	MPO trunk cable
Construction Type	Non-armored
Subunit Type	Gel-free
Jacket Color	Yellow
Jacket Marking	Feet
Subunit, quantity	2
Fibers per Subunit, quantity	12
Total Fiber Count	24

Dimensions

Height Over Jacket	6.4 mm 0.252 in
Width Over Jacket	9.4 mm 0.37 in
Buffer Tube/Subunit Diameter	3 mm 0.118 in

Representative Image



Mechanical Specifications

Minimum Bend Radius, loaded	96 mm 3.78 in
Minimum Bend Radius, unloaded	64 mm 2.52 in
Tensile Load, long term, maximum	200 N 44.962 lbf
Tensile Load, short term, maximum	667 N 149.948 lbf
Compression	10 N/mm 57.101 lb/in
Compression Test Method	FOTP-41 IEC 60794-1 E3
Flex	25 cycles
Flex Test Method	FOTP-104 IEC 60794-1 E6
Impact	2.94 N-m 26.021 in lb
Impact Test Method	FOTP-25 IEC 60794-1 E4
Strain	See long and short term tensile loads
Strain Test Method	FOTP-33 IEC 60794-1 E1
Twist	10 cycles
Twist Test Method	FOTP-85 IEC 60794-1 E7
Vertical Rise, maximum	317 m 1,040.026 ft

Optical Specifications

Fiber Type	G.652.D and G.657.A1, TeraSPEED® OS2 OS2
------------	--

Environmental Specifications

Installation temperature	0 °C to +50 °C (+32 °F to +122 °F)
--------------------------	------------------------------------

Operating Temperature	0 °C to +60 °C (+32 °F to +140 °F)
Storage Temperature	-40 °C to +70 °C (-40 °F to +158 °F)
Cable Qualification Standards	ANSI/ICEA S-83-596 Telcordia GR-409
EN50575 CPR Cable EuroClass Fire Performance	B2ca
EN50575 CPR Cable EuroClass Smoke Rating	s1a
EN50575 CPR Cable EuroClass Droplets Rating	d0
EN50575 CPR Cable EuroClass Acidity Rating	a1
Environmental Space	Low Smoke Zero Halogen (LSZH)
Flame Test Method	IEC 60754-2 IEC 61034-2

Environmental Test Specifications

Heat Age	0 °C to +85 °C (+32 °F to +185 °F)
Heat Age Test Method	IEC 60794-1 F9
Low High Bend	0 °C to +70 °C (+32 °F to +158 °F)
Low High Bend Test Method	FOTP-37 IEC 60794-1 E11
Temperature Cycle	0 °C to +70 °C (+32 °F to +158 °F)
Temperature Cycle Test Method	FOTP-3 IEC 60794-1 F1

Packaging and Weights

Cable weight	42 kg/km 28.223 lb/kft
--------------	--------------------------

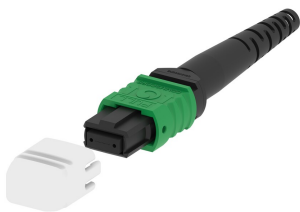
Regulatory Compliance/Certifications

Agency	Classification
CENELEC	EN 50575 compliant, Declaration of Performance (DoP) available
CHINA-ROHS	Below maximum concentration value
ISO 9001:2015	Designed, manufactured and/or distributed under this quality management system
REACH-SVHC	Compliant as per SVHC revision on www.commscope.com/ProductCompliance
ROHS	Compliant
UK-ROHS	Compliant



* Footnotes

Operating Temperature	Specification applicable to non-terminated bulk fiber cable
-----------------------	---



MPO12, LOW LOSS, FEMALE, Singlemode, GREEN, 3mm

Product Classification

Regional Availability	Asia Australia/New Zealand EMEA Latin America North America
Portfolio	CommScope®
Product Type	Fiber connector
Product Brand	TeraSPEED®

General Specifications

Color	Green
Color, boot	Black
Ferrule Geometry	Angled
Interface	MPO/APC Female
Interface Feature	Unpinned
Total Fiber Count	12

Dimensions

Length	60.1 mm 2.366 in
Compatible Cable Diameter	3 mm 0.118 in

Material Specifications

Ferrule Material	Polymer
------------------	---------

Mechanical Specifications

Cable Retention Strength, maximum	11.24 lb @ 0 °
-----------------------------------	----------------

Optical Specifications

Fiber Mode	Singlemode
Fiber Type	G.652.D and G.657.A1, TeraSPEED® OS2
Insertion Loss Change, mating	0.3 dB
Optical Components Standard	ANSI/TIA-568-C.3

Insertion Loss Change, temperature	0.3 dB
Insertion Loss, maximum	0.67 dB
Return Loss, minimum	55 dB

Packaging and Weights

Packaging quantity	1
--------------------	---

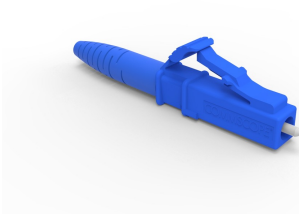
Regulatory Compliance/Certifications

Agency	Classification
CHINA-ROHS	Below maximum concentration value
ISO 9001:2015	Designed, manufactured and/or distributed under this quality management system
REACH-SVHC	Compliant as per SVHC revision on www.commscope.com/ProductCompliance
ROHS	Compliant
UK-ROHS	Compliant



* Footnotes

Insertion Loss Change, mating	TIA-568: Maximum insertion loss change after 500 matings
Insertion Loss Change, temperature	Maximum insertion loss change from -10 °C to +60 °C (+14 °F to +140 °F)



LC/UPC Connector, Singlemode, Blue, Short Boot

Product Classification

Regional Availability	Asia Australia/New Zealand EMEA Latin America North America
Portfolio	CommScope®
Product Type	Fiber connector

General Specifications

Color, boot	Blue
Color, housing	Blue
Interface	LC/UPC

Dimensions

Length	41.6 mm 1.638 in
--------	--------------------

Material Specifications

Ferrule Material	Zirconia
------------------	----------

Mechanical Specifications

Cable Retention Strength, maximum	11.24 lb @ 0 °
-----------------------------------	----------------

Optical Specifications

Fiber Mode	Singlemode
Insertion Loss Change, mating	0.2 dB
Optical Components Standard	ANSI/TIA-568. 3-D IEC 61753-1
Insertion Loss Change, temperature	0.3 dB
Insertion Loss, maximum	0.25 dB
Return Loss, minimum	55 dB

Regulatory Compliance/Certifications

Agency	Classification
CHINA-ROHS	Below maximum concentration value
ROHS	Compliant
UK-ROHS	Compliant



* Footnotes

Insertion Loss Change, mating	TIA-568: Maximum insertion loss change after 500 matings
Insertion Loss Change, temperature	Maximum insertion loss change from -10 °C to +60 °C (+14 °F to +140 °F)