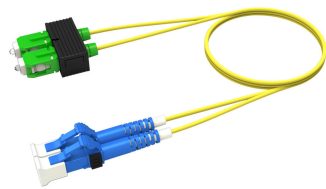


FFWLCSA42

Base Product



Singlemode LC/UPC to SC/APC, Fiber Patch Cord, 1.6 mm Duplex, Low Smoke Zero Halogen (LSZH)

- *Product complies with the Build America, Buy America Act (BABAA) requirements of the Infrastructure Investment and Jobs Act of 2021 (Pub. L. 117- 58, §§ 70901-70953), or is the subject of a waiver approved by the Secretary of Commerce or designee. Compliance requirements and waiver applicability vary based on government funding program. Check the laws and regulations for your specific program.

Product Classification

| | |
|-------------------------|--------------------------------------------------------------------------------------------------------------------------|
| Regional Availability | Asia Australia/New Zealand Europe Latin America Middle East /Africa North America |
| Portfolio | CommScope® |
| Product Type | Fiber patch cord, duplex |
| Product Brand | SYSTIMAX InstaPATCH® 360 |
| Product Series | FFW |
| Government Requirements | Build America Buy America (BABA) compliant* |
| Ordering Note | For lengths greater than 999 ft (304 m), orders must be in meters Minimum length may vary based on cable configuration |

General Specifications

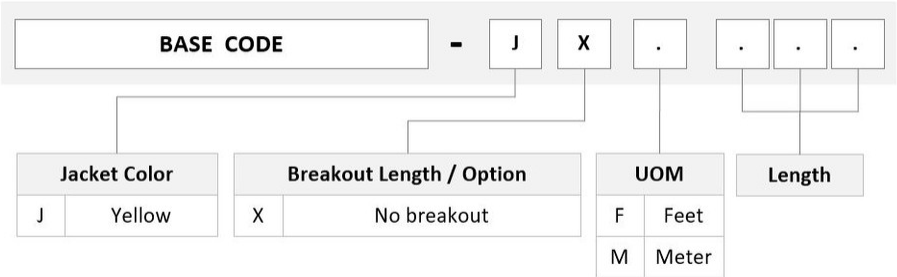
| | |
|---------------------------|---------------------------|
| Connector A, quantity | 2 |
| Color, boot A | Blue |
| Color, connector A | Blue |
| Connector B, quantity | 2 |
| Color, boot B | Green |
| Color, connector B | Green |
| Interface, Connector A | LC/UPC |
| Interface, Connector B | SC/APC |
| Jacket Color | Yellow |
| Location of Manufacturing | Claremont, North Carolina |
| Polarity | Method B |
| Total Fibers, quantity | 2 |

FFWLCSA42

Dimensions

| | |
|----------------------------------|-------------------|
| Cable Assembly Length Range (m) | 1 – 999 |
| Cable Assembly Length Range (ft) | 1 – 999 |
| Diameter Over Jacket | 1.6 mm 0.063 in |

Ordering Tree



Mechanical Specifications

| | |
|-----------------------------------|---------------------------------|
| Cable Retention Strength, maximum | 11.24 lb @ 0 ° 4.40 lb @ 90 ° |
|-----------------------------------|---------------------------------|

Optical Specifications

| | |
|------------|--------------------------------|
| Fiber Mode | Singlemode |
| Fiber Type | G.652.D G.657.A1, TeraSPEED® |

Environmental Specifications

| | |
|-----------------------|--------------------------------------|
| Operating Temperature | -10 °C to +60 °C (+14 °F to +140 °F) |
| Environmental Space | Dual Rated LSZH/Riser |

Regulatory Compliance/Certifications

| Agency | Classification |
|---------------|--------------------------------------------------------------------------------------------------------------------------------|
| ANATEL | Compliant |
| CHINA-ROHS | Below maximum concentration value |
| ISO 9001:2015 | Designed, manufactured and/or distributed under this quality management system |
| REACH-SVHC | Compliant as per SVHC revision on www.commscope.com/ProductCompliance |
| ROHS | Compliant |
| UK-ROHS | Compliant |

FFWLCSA42



Included Products

| | | |
|---------------------|---|---------------------------------------------------------------------------------------------------------------------------------------------------------------------------------|
| 460125784 | - | TeraSPEED® SC APC Connector for 1.6 mm Fiber, Duplex, Singlemode, green |
| 760021675 | - | Fiber Indoor Cable, TeraSPEED® 1.6mm Low Smoke Zero Halogen Riser, 2-fiber Zipcord, Singlemode G.652.D and G.657.A1, Feet jacket marking, Yellow jacket color, Eca Flame Rating |
| N-002-ZC-8W-F16YL/E | | |
| 860637435 | - | LC/UPC Connector, Singlemode, Blue, Short Boot |

TeraSPEED® SC APC Connector for 1.6 mm Fiber, Duplex, Singlemode, green

Product Classification

| | |
|-----------------------|---------------------------------------------------------------------|
| Regional Availability | Asia Australia/New Zealand EMEA Latin America North America |
| Portfolio | CommScope® |
| Product Type | Fiber connector |
| Product Brand | TeraSPEED® |

General Specifications

| | |
|------------------|--------|
| Body Style | Duplex |
| Color | Green |
| Ferrule Geometry | Angled |
| Interface | SC/APC |

Dimensions

| | |
|---------------------------|-------------------|
| Length | 50.3 mm 1.98 in |
| Compatible Cable Diameter | 1.6 mm 0.063 in |

Material Specifications

| | |
|------------------|----------|
| Ferrule Material | Zirconia |
|------------------|----------|

Mechanical Specifications

| | |
|-----------------------------------|----------------|
| Cable Retention Strength, maximum | 11.24 lb @ 0 ° |
|-----------------------------------|----------------|

Optical Specifications

| | |
|------------------------------------|----------------------------------------|
| Fiber Type | G.652.D and G.657.A1, TeraSPEED® OS2 |
| Insertion Loss Change, mating | 0.3 dB |
| Optical Components Standard | ANSI/TIA-568-C.3 |
| Insertion Loss Change, temperature | 0.3 dB |
| Insertion Loss, typical | 0.3 dB |
| Return Loss, minimum | 65 dB |

Packaging and Weights

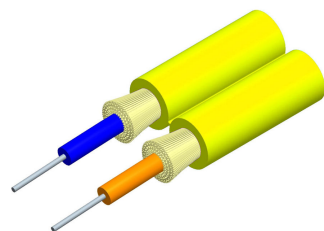
Packaging quantity 2

Regulatory Compliance/Certifications

| Agency | Classification |
|---------------|--------------------------------------------------------------------------------|
| ISO 9001:2015 | Designed, manufactured and/or distributed under this quality management system |

* Footnotes

| | |
|------------------------------------|-------------------------------------------------------------------------|
| Insertion Loss Change, mating | TIA-568: Maximum insertion loss change after 500 matings |
| Insertion Loss Change, temperature | Maximum insertion loss change from -10 °C to +60 °C (+14 °F to +140 °F) |



Fiber Indoor Cable, TeraSPEED® 1.6mm Low Smoke Zero Halogen Riser, 2-fiber Zipcord, Singlemode G.652.D and G.657.A1, Feet jacket marking, Yellow jacket color, Eca Flame Rating

Product Classification

| | |
|-----------------------|---------------------------------------------------------------------|
| Regional Availability | Asia Australia/New Zealand EMEA Latin America North America |
| Portfolio | CommScope® |
| Product Type | Fiber indoor cable |
| Product Series | N-ZC |

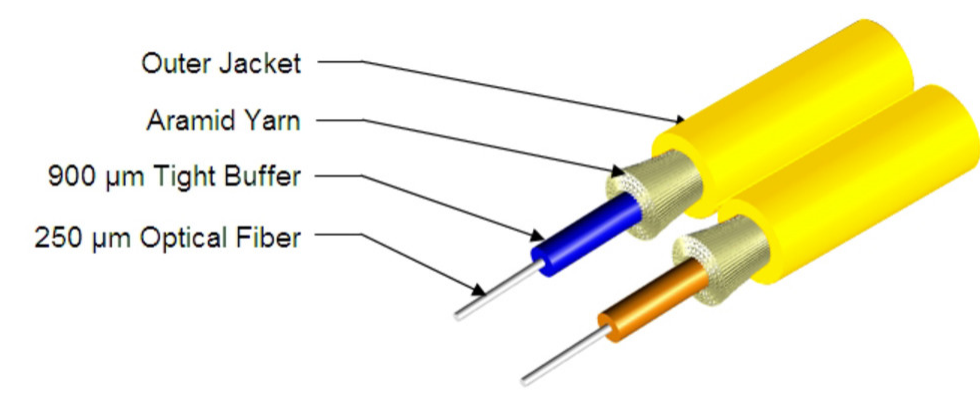
General Specifications

| | |
|-------------------|-------------|
| Cable Type | Cordage |
| Construction Type | Non-armored |
| Subunit Type | Gel-free |
| Jacket Color | Yellow |
| Jacket Marking | Feet |
| Total Fiber Count | 2 |

Dimensions

| | |
|--------------------|-------------------|
| Height Over Jacket | 1.7 mm 0.067 in |
| Width Over Jacket | 3.5 mm 0.138 in |

Representative Image



Mechanical Specifications

| | |
|-----------------------------------|---------------------------------------|
| Minimum Bend Radius, loaded | 38 mm 1.496 in |
| Minimum Bend Radius, unloaded | 15 mm 0.591 in |
| Tensile Load, long term, maximum | 53 N 11.915 lbf |
| Tensile Load, short term, maximum | 178 N 40.016 lbf |
| Compression | 10 N/mm 57.101 lb/in |
| Compression Test Method | FOTP-41 IEC 60794-1 E3 |
| Flex | 300 cycles |
| Flex Test Method | FOTP-104 IEC 60794-1 E6 |
| Impact | 0.74 N-m 6.55 in lb |
| Impact Test Method | FOTP-25 IEC 60794-1 E4 |
| Strain | See long and short term tensile loads |
| Strain Test Method | FOTP-33 IEC 60794-1 E1 |
| Twist | 10 cycles |
| Twist Test Method | FOTP-85 IEC 60794-1 E7 |
| Vertical Rise, maximum | 500 m 1,640.42 ft |

Optical Specifications

| | |
|------------|----------------------------------|
| Fiber Type | G.652.D and G.657.A1, TeraSPEED® |
|------------|----------------------------------|

Environmental Specifications

| | |
|--------------------------|-------------------------------------|
| Installation temperature | -20 °C to +60 °C (-4 °F to +140 °F) |
|--------------------------|-------------------------------------|

| | |
|----------------------------------------------|-----------------------------------------------------------------------------|
| Operating Temperature | -20 °C to +70 °C (-4 °F to +158 °F) |
| Storage Temperature | -40 °C to +70 °C (-40 °F to +158 °F) |
| Cable Qualification Standards | ANSI/ICEA S-83-596 Telcordia GR-409 |
| EN50575 CPR Cable EuroClass Fire Performance | Eca |
| Environmental Space | Low Smoke Zero Halogen (LSZH) Riser |
| Flame Test Listing | NEC OFNR-ST1 (ETL) and c(ETL) |
| Flame Test Method | IEC 60332-1-2 IEC 60332-3 IEC 60754-2 IEC 61034-2 UL 1666 UL 1685 |

Environmental Test Specifications

| | |
|-------------------------------|-------------------------------------|
| Heat Age | -20 °C to +85 °C (-4 °F to +185 °F) |
| Heat Age Test Method | IEC 60794-1 F9 |
| Low High Bend | -20 °C to +70 °C (-4 °F to +158 °F) |
| Low High Bend Test Method | FOTP-37 IEC 60794-1 E11 |
| Temperature Cycle | -20 °C to +70 °C (-4 °F to +158 °F) |
| Temperature Cycle Test Method | FOTP-3 IEC 60794-1 F1 |

Packaging and Weights

| | |
|--------------|------------------------|
| Cable weight | 6 kg/km 4.032 lb/kft |
|--------------|------------------------|

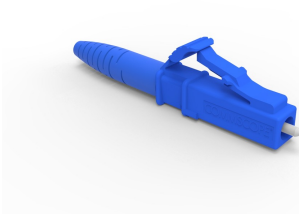
Regulatory Compliance/Certifications

| Agency | Classification |
|---------------|--------------------------------------------------------------------------------------------------------------------------------|
| CENELEC | EN 50575 compliant, Declaration of Performance (DoP) available |
| CHINA-ROHS | Below maximum concentration value |
| ISO 9001:2015 | Designed, manufactured and/or distributed under this quality management system |
| REACH-SVHC | Compliant as per SVHC revision on www.commscope.com/ProductCompliance |
| ROHS | Compliant |
| UK-ROHS | Compliant |



* Footnotes

| | |
|-----------------------|-------------------------------------------------------------|
| Operating Temperature | Specification applicable to non-terminated bulk fiber cable |
|-----------------------|-------------------------------------------------------------|



LC/UPC Connector, Singlemode, Blue, Short Boot

Product Classification

| | |
|-----------------------|---------------------------------------------------------------------|
| Regional Availability | Asia Australia/New Zealand EMEA Latin America North America |
| Portfolio | CommScope® |
| Product Type | Fiber connector |

General Specifications

| | |
|----------------|--------|
| Color, boot | Blue |
| Color, housing | Blue |
| Interface | LC/UPC |

Dimensions

| | |
|--------|--------------------|
| Length | 41.6 mm 1.638 in |
|--------|--------------------|

Material Specifications

| | |
|------------------|----------|
| Ferrule Material | Zirconia |
|------------------|----------|

Mechanical Specifications

| | |
|-----------------------------------|----------------|
| Cable Retention Strength, maximum | 11.24 lb @ 0 ° |
|-----------------------------------|----------------|

Optical Specifications

| | |
|------------------------------------|---------------------------------|
| Fiber Mode | Singlemode |
| Insertion Loss Change, mating | 0.2 dB |
| Optical Components Standard | ANSI/TIA-568. 3-D IEC 61753-1 |
| Insertion Loss Change, temperature | 0.3 dB |
| Insertion Loss, maximum | 0.25 dB |
| Return Loss, minimum | 55 dB |

Regulatory Compliance/Certifications

| Agency | Classification |
|------------|-----------------------------------|
| CHINA-ROHS | Below maximum concentration value |
| ROHS | Compliant |
| UK-ROHS | Compliant |



* Footnotes

| | |
|-------------------------------------------|-------------------------------------------------------------------------|
| Insertion Loss Change, mating | TIA-568: Maximum insertion loss change after 500 matings |
| Insertion Loss Change, temperature | Maximum insertion loss change from -10 °C to +60 °C (+14 °F to +140 °F) |