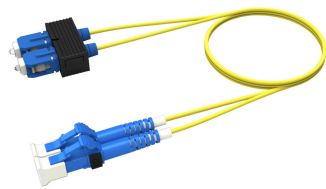


# FFWLCSC42

Base Product



Singlemode LC/UPC to SC/UPC, Fiber Patch Cord, 1.6 mm Duplex, Low Smoke Zero Halogen (LSZH)

## Product Classification

Regional Availability	Asia   Australia/New Zealand   Europe   Latin America   Middle East /Africa   North America
Portfolio	CommScope®
Product Type	Fiber patch cord, duplex
Product Brand	SYSTIMAX InstaPATCH® 360
Product Series	FFW
Ordering Note	For lengths greater than 999 ft (304 m), orders must be in meters   Minimum length may vary based on cable configuration

## General Specifications

Connector A, quantity	2
Color, boot A	Blue
Color, connector A	Blue
Connector B, quantity	2
Color, boot B	Blue
Color, connector B	Blue
Interface, Connector A	LC/UPC
Interface, Connector B	SC/UPC
Jacket Color	Yellow
Polarity	Method B
Total Fibers, quantity	2

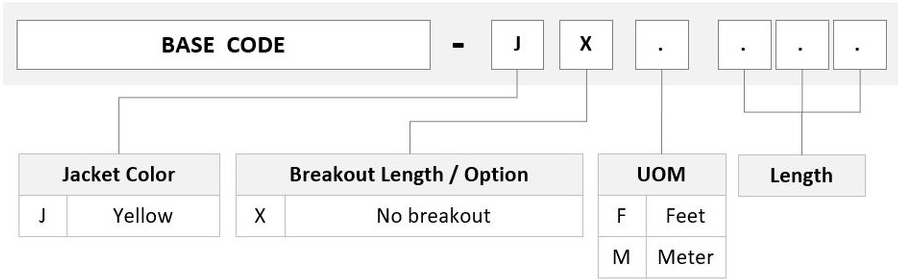
## Dimensions

Cable Assembly Length Range (m)	1 – 999
---------------------------------	---------

# FFWLCSC42

Cable Assembly Length Range (ft)	1 – 999
Diameter Over Jacket	1.6 mm   0.063 in

## Ordering Tree



## Mechanical Specifications

Cable Retention Strength, maximum	11.24 lb @ 0 °   4.40 lb @ 90 °
-----------------------------------	---------------------------------

## Optical Specifications

Fiber Mode	Singlemode
Fiber Type	G.652.D   G.657.A1, TeraSPEED®

## Environmental Specifications

Operating Temperature	-10 °C to +60 °C (+14 °F to +140 °F)
Environmental Space	Dual Rated LSZH/Riser

## Regulatory Compliance/Certifications

Agency	Classification
ANATEL	Compliant
CHINA-ROHS	Below maximum concentration value
ISO 9001:2015	Designed, manufactured and/or distributed under this quality management system
REACH-SVHC	Compliant as per SVHC revision on <a href="https://www.commscope.com/ProductCompliance">www.commscope.com/ProductCompliance</a>
ROHS	Compliant
UK-ROHS	Compliant

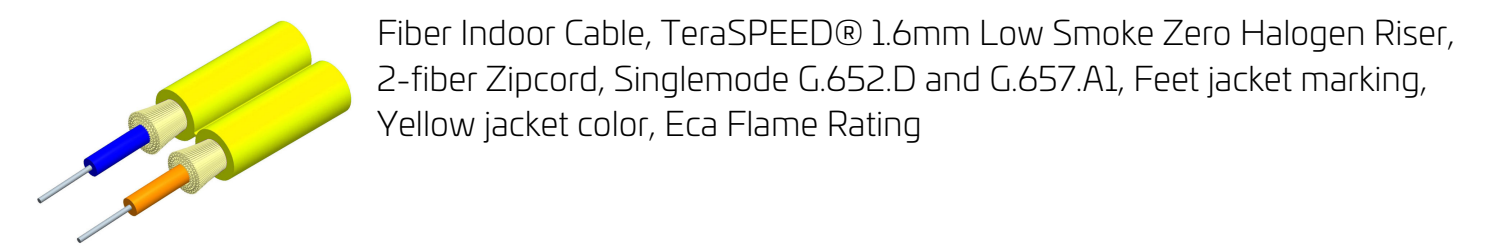


# FFWLCSC42

---

## Included Products

- |                     |   |   |
|---------------------|---|---|
| 760021675           | – | Fiber Indoor Cable, TeraSPEED® 1.6mm Low Smoke Zero Halogen Riser, 2-fiber Zipcord,         |
| N-002-ZC-8W-F16YL/E |   | Singlemode G.652.D and G.657.A1, Feet jacket marking, Yellow jacket color, Eca Flame Rating |
| 860637435           | – | LC/UPC Connector, Singlemode, Blue, Short Boot  |
| 860648965           | – | SC/UPC Connector, Singlemode, Blue  |



Product Classification

Regional Availability	Asia   Australia/New Zealand   EMEA   Latin America   North America
Portfolio	CommScope®
Product Type	Fiber indoor cable
Product Series	N-ZC

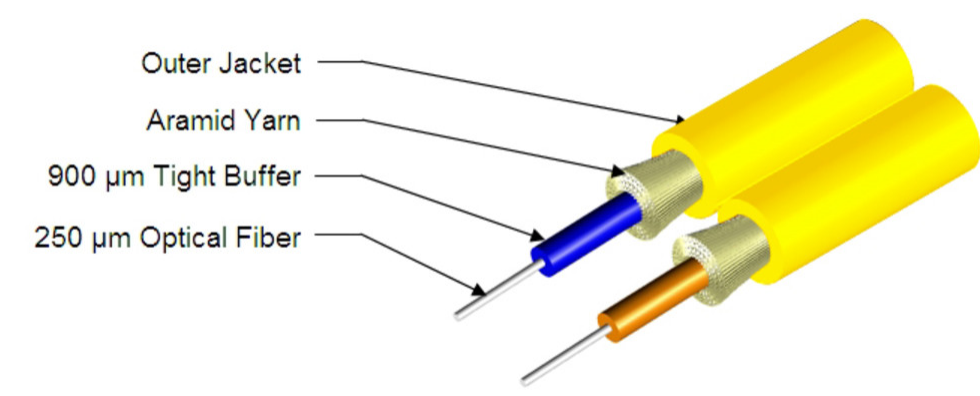
General Specifications

Cable Type	Cordage
Construction Type	Non-armored
Subunit Type	Gel-free
Jacket Color	Yellow
Jacket Marking	Feet
Total Fiber Count	2

Dimensions

Height Over Jacket	1.7 mm   0.067 in
Width Over Jacket	3.5 mm   0.138 in

Representative Image



## Mechanical Specifications

Minimum Bend Radius, loaded	38 mm   1.496 in
Minimum Bend Radius, unloaded	15 mm   0.591 in
Tensile Load, long term, maximum	53 N   11.915 lbf
Tensile Load, short term, maximum	178 N   40.016 lbf
Compression	10 N/mm   57.101 lb/in
Compression Test Method	FOTP-41   IEC 60794-1 E3
Flex	300 cycles
Flex Test Method	FOTP-104   IEC 60794-1 E6
Impact	0.74 N-m   6.55 in lb
Impact Test Method	FOTP-25   IEC 60794-1 E4
Strain	See long and short term tensile loads
Strain Test Method	FOTP-33   IEC 60794-1 E1
Twist	10 cycles
Twist Test Method	FOTP-85   IEC 60794-1 E7
Vertical Rise, maximum	500 m   1,640.42 ft

## Optical Specifications

Fiber Type	G.652.D and G.657.A1, TeraSPEED®
------------	----------------------------------

## Environmental Specifications

Installation temperature	-20 °C to +60 °C (-4 °F to +140 °F)
--------------------------	-------------------------------------

# 760021675 | N-002-ZC-8W-F16YL/E

Operating Temperature	-20 °C to +70 °C (-4 °F to +158 °F)
Storage Temperature	-40 °C to +70 °C (-40 °F to +158 °F)
Cable Qualification Standards	ANSI/ICEA S-83-596   Telcordia GR-409
EN50575 CPR Cable EuroClass Fire Performance	Eca
Environmental Space	Low Smoke Zero Halogen (LSZH)   Riser
Flame Test Listing	NEC OFNR-ST1 (ETL) and c(ETL)
Flame Test Method	IEC 60332-1-2   IEC 60332-3   IEC 60754-2   IEC 61034-2   UL 1666   UL 1685

## Environmental Test Specifications

Heat Age	-20 °C to +85 °C (-4 °F to +185 °F)
Heat Age Test Method	IEC 60794-1 F9
Low High Bend	-20 °C to +70 °C (-4 °F to +158 °F)
Low High Bend Test Method	FOTP-37   IEC 60794-1 E11
Temperature Cycle	-20 °C to +70 °C (-4 °F to +158 °F)
Temperature Cycle Test Method	FOTP-3   IEC 60794-1 F1

## Packaging and Weights

Cable weight	6 kg/km   4.032 lb/kft
--------------	------------------------

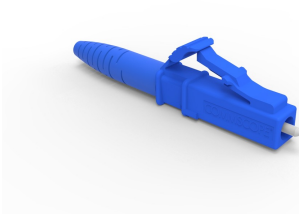
## Regulatory Compliance/Certifications

Agency	Classification
CENELEC	EN 50575 compliant, Declaration of Performance (DoP) available
CHINA-ROHS	Below maximum concentration value
ISO 9001:2015	Designed, manufactured and/or distributed under this quality management system
REACH-SVHC	Compliant as per SVHC revision on <a href="http://www.commscope.com/ProductCompliance">www.commscope.com/ProductCompliance</a>
ROHS	Compliant
UK-ROHS	Compliant



### \* Footnotes

Operating Temperature	Specification applicable to non-terminated bulk fiber cable
-----------------------	---



LC/UPC Connector, Singlemode, Blue, Short Boot

Product Classification

Regional Availability	Asia   Australia/New Zealand   EMEA   Latin America   North America
Portfolio	CommScope®
Product Type	Fiber connector

General Specifications

Color, boot	Blue
Color, housing	Blue
Interface	LC/UPC

Dimensions

Length	41.6 mm   1.638 in
--------	--------------------

Material Specifications

Ferrule Material	Zirconia
------------------	----------

Mechanical Specifications

Cable Retention Strength, maximum	11.24 lb @ 0 °
-----------------------------------	----------------

Optical Specifications

Fiber Mode	Singlemode
Insertion Loss Change, mating	0.2 dB
Optical Components Standard	ANSI/TIA-568. 3-D   IEC 61753-1
Insertion Loss Change, temperature	0.3 dB
Insertion Loss, maximum	0.25 dB
Return Loss, minimum	55 dB

Regulatory Compliance/Certifications

Agency	Classification
CHINA-ROHS	Below maximum concentration value
ROHS	Compliant
UK-ROHS	Compliant

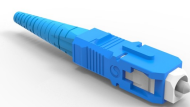


\* Footnotes

<b>Insertion Loss Change, mating</b>	TIA-568: Maximum insertion loss change after 500 matings
<b>Insertion Loss Change, temperature</b>	Maximum insertion loss change from -10 °C to +60 °C (+14 °F to +140 °F)



SC/UPC Connector, Singlemode, Blue



Product Classification

Regional Availability	Asia   Australia/New Zealand   EMEA   Latin America   North America
Portfolio	CommScope®
Product Type	Fiber connector

General Specifications

Color, boot	Blue
Color, housing	Blue
Interface	SC/UPC

Dimensions

Length	48 mm   1.89 in
Compatible Cable Diameter	1.6 mm   0.063 in   2 mm   0.079 in

Material Specifications

Ferrule Material	Zirconia
------------------	----------

Mechanical Specifications

Cable Retention Strength, maximum	15.73 lb @ 0 °
-----------------------------------	----------------

Optical Specifications

Fiber Mode	Singlemode
Insertion Loss Change, mating	0.2 dB
Optical Components Standard	ANSI/TIA-568. 3-D   IEC 61753-1
Insertion Loss Change, temperature	0.2 dB
Insertion Loss, maximum	0.34 dB
Return Loss, minimum	50 dB

Regulatory Compliance/Certifications

Agency	Classification
CHINA-ROHS	Above maximum concentration value
ROHS	Compliant/Exempted
UK-ROHS	Compliant/Exempted



\* Footnotes

Insertion Loss Change, mating	TIA-568: Maximum insertion loss change after 500 matings
Insertion Loss Change, temperature	Maximum insertion loss change from -10 °C to +60 °C (+14 °F to +140 °F)