

CARXG | IP6A-24PUTP-1100E-BLUNT

Base Product



InstaPATCH® Cu GigaSPEED X10D® U/UTP Plenum Preterminated Copper Cable, 360 1100 Evolve module to unterminated, 24 links

Product Classification

Regional Availability	Asia Australia/New Zealand EMEA Latin America North America
Portfolio	CommScope®
Product Type	Copper trunk cable assembly
Product Brand	GigaSPEED X10D® InstaPATCH® Cu

General Specifications

ANSI/TIA Category	6A
Cable Type	U/UTP (unshielded)
Conductor Type	Solid
Interface, Connector A	360 1100 Evolve module
Interface Feature, connector A	Standard
Interface, Connector B	Unterminated
Link Count	24
Wiring	T568B

Dimensions

Cable Assembly Length Range (m)	5 – 90
Cable Assembly Length Range (ft)	17 – 295

Electrical Specifications

dc Resistance, maximum	0.3 ohm
Safety Voltage Rating	300 V

Ordering Tree

CARXG | IP6A-24PUTP-1100E-BLUNT

	1	2	3	4	5	6	7	8	9	10	11	12	
	C	A	A	A	C	-	1	1	H	A	B	B	F
	0	5	0										

Cable Type	Connector B	Orientation A	Orientation B
A Cat 6A X10D – U/UTP (Plenum)	A Outlet* – Single Row Standard Density	1 Trident Series Flat	1 Trident Series Flat
B Cat 6A X10D – U/UTP (Riser)	B Outlet* – Dual Row Standard Density	2 Right Paired Flat	2 Right Paired Flat
C Cat 6A X10D – U/UTP (LSZH)	C Outlet* – Dual Row High Density	3 Right Series Flat	3 Right Series Flat
D Cat 6A X10D – F/UTP (Plenum)	G RJ45 Plug* – Single Row Standard Density	4 Left Paired Flat	4 Left Paired Flat
E Cat 6A X10D – F/UTP (Riser)	H RJ45 Plug* – Dual Row Standard Density	5 Left Series Flat	5 Left Series Flat
F Cat 6A X10D – F/UTP (LSZH)	J RJ45 Plug* – Dual Row High Density	6 Trident Paired Flat	6 Trident Paired Flat
G Cat 6 XL – U/UTP (Plenum)	N 1100 Module	A Trident Series Angled	A Trident Series Angled
H Cat 6 XL – U/UTP (Riser)	R 360 1100 Evolve Module	B Right Paired Angled	B Right Paired Angled
J Cat 6 XL – U/UTP (LSZH)	S OneLink 2x6	C Right Series Angled	C Right Series Angled
K Cat 6A X10D – S/FTP (LSZH)	T OneLink 2x4	D Left Paired Angled	D Left Series Angled
L Cat 6 – U/UTP Class B Rated (LSZH)		E Left Series Angled	E Left Series Angled
M Cat 6A – U/UTP Class B Rated (LSZH)		F Trident Paired Angled	F Trident Paired Angled
N Cat 6A X10D SD – U/UTP (Riser)			X Not Applicable

Connector A	Link	Outlet Color	Jacket Color	UOM	Length
A Outlet* – Single Row Standard Density	B 6	0 Not Applicable	8 White (WH)	F Foot	12 XXX
B Outlet* – Dual Row Standard Density	C 8	1 Black (BK)	10 Slate (SL)	M Meter	
C Outlet* – Dual Row High Density	D 12	2 Blue (BL)			
G RJ45 Plug* – Single Row Standard Density	E 16	3 White (WH)			
H RJ45 Plug* – Dual Row Standard Density	F 18				
J RJ45 Plug* – Dual Row High Density	G 24				
N 1100 Module					
R 360 1100 Evolve Module					
S OneLink 2x6					
T OneLink 2x4					
X Unterminated					

Bundling	Labeling
H Hook-n-loop	A Generic Label
S Sleaving	

• Cords > 1m are authorized for use in channels and are an effective standalone method used to connect active devices
 • Cords < 1m are also valid elements for use in a channel or as an equipment interconnect, but due to their limited length are not guaranteed to meet component compliance requirements that were developed to assess the quality of longer cords

Environmental Specifications

Operating Temperature	-10 °C to +60 °C (+14 °F to +140 °F)
Environmental Space	Plenum
Flammability Rating	UL 94 V-0

Regulatory Compliance/Certifications

Agency	Classification
CHINA-ROHS	Below maximum concentration value
ISO 9001:2015	Designed, manufactured and/or distributed under this quality management system
REACH-SVHC	Compliant as per SVHC revision on www.commscope.com/ProductCompliance
ROHS	Compliant
UK-ROHS	Compliant



Included Products

2091B-4/23	–	GigaSPEED X10D® 2091B ETL Verified Category 6A U/UTP Cable, 4 pair count
760151183	–	SYSTIMAX 360™ GigaSPEED X10D® 1100GS6 Evolve Category 6A U/UTP Distribution Module, 6 port
360-IPR-1100-GS6-DM6		

2091B-4/23



GigaSPEED X10D® 2091B ETL Verified Category 6A U/UTP Cable, 4 pair count

Product Classification

Regional Availability	Asia Australia/New Zealand EMEA Latin America North America
Portfolio	SYSTIMAX®
Product Type	Twisted pair cable
Product Brand	GigaSPEED X10D®

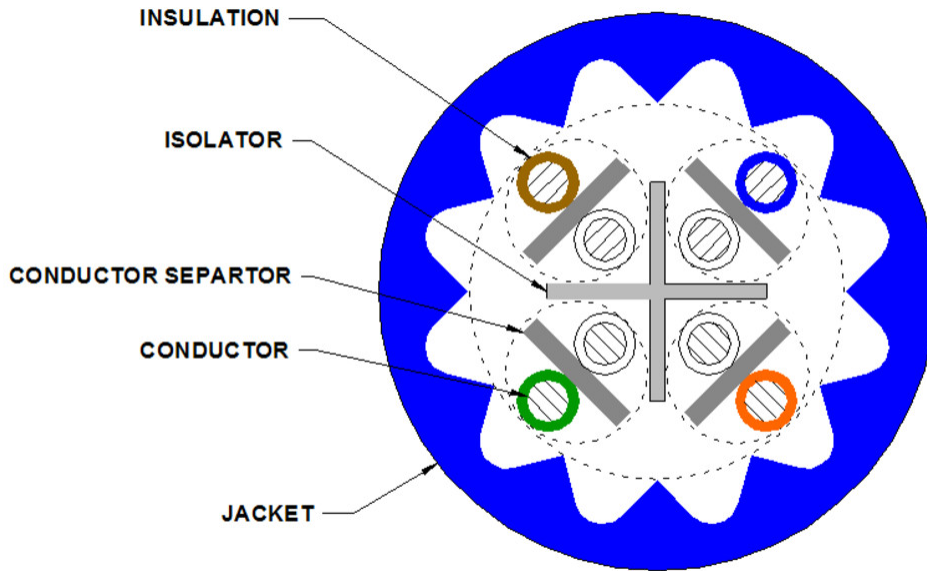
General Specifications

Product Number	2091B
ANSI/TIA Category	6A
Cable Component Type	Horizontal
Cable Type	U/UTP (unshielded)
Conductor Type, singles	Solid
Conductors, quantity	8
Note	Consult ANSI/TIA-568-C.2 Annex G for length de-rating guidance for cable installation in higher temperature environments
Pairs, quantity	4
Separator Type	Isolator
Transmission Standards	ANSI/TIA-568.2-D ISO/IEC 11801 Class EA

Dimensions

Diameter Over Jacket, nominal	7.239 mm 0.285 in
Jacket Thickness	1.295 mm 0.051 in
Conductor Gauge, singles	23 AWG

Cross Section Drawing



Electrical Specifications

dc Resistance Unbalance, maximum	4 %
dc Resistance, maximum	7.61 ohms/100 m 2.32 ohms/100 ft
Dielectric Strength, minimum	1500 Vac 2500 Vdc
Mutual Capacitance at Frequency	6.0 nF/100 m @ 1 kHz
Nominal Velocity of Propagation (NVP)	66 %
Operating Frequency, maximum	550 MHz
Operating Voltage, maximum	80 V
Remote Powering	Fully complies with the recommendations set forth by IEEE 802.3bt (Type 4) for the safe delivery of power over LAN cable when installed according to ISO/IEC 14763-2, CENELEC EN 50174-1, CENELEC EN 50174-2 or TIA TSB-184-A

Material Specifications

Conductor Material	Bare copper
Insulation Material	FEP
Jacket Material	PVC
Separator Material	FEP
Separator 2 Material	Polyolefin

Mechanical Specifications

2091B-4/23

Pulling Tension, maximum 11.34 kg | 25 lb

Environmental Specifications

Installation temperature 0 °C to +60 °C (+32 °F to +140 °F)

Operating Temperature -20 °C to +75 °C (-4 °F to +167 °F)

Environmental Space Plenum

Temperature Rating, UL 105 °C | 221 °F

Flame Test Method CMP/FT6

Safety Standard UL 444

Smoke Test Method CMP/FT6 | NFPA 262

Packaging and Weights

Cable weight 60.568 kg/km | 40.7 lb/kft

Regulatory Compliance/Certifications

Agency

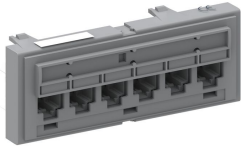
ISO 9001:2015

Classification

Designed, manufactured and/or distributed under this quality management system

760151183 | 360-IPR-1100-GS6-DM6

SYSTIMAX 360™ GigaSPEED X10D® 1100GS6 Evolve Category 6A U/UTP Distribution Module, 6 port



Product Classification

Regional Availability

Asia | Australia/New Zealand | EMEA | Latin America | North America

Portfolio

SYSTIMAX®

Product Type

Module

Product Brand

GigaSPEED X10D® | SYSTIMAX 360™

General Specifications

ANSI/TIA Category

6A

Cable Type

Unshielded

Color

Cool gray

Conductor Type

Solid | Stranded

Intelligence Type

iPatch® ready

Modules, quantity

1

Rack Type

EIA 19 in

Rack Units

1

Termination Type

IDC

Total Ports, quantity

6

Wiring

T568A | T568B

Dimensions

Height

43.688 mm | 1.72 in

Width

482.6 mm | 19 in

Depth

28.702 mm | 1.13 in

Compatible Diameter Over Dielectric, maximum

1.168 mm | 0.046 in

760151183 | 360-IPR-1100-GS6-DM6

Compatible Diameter Over Dielectric, minimum	0.762 mm 0.03 in
Compatible Conductor Gauge, solid	22 AWG 24 AWG
Compatible Conductor Gauge, stranded	22 AWG 24 AWG

Electrical Specifications

Current Rating at Temperature	1.5 A @ 20 °C 1.5 A @ 68 °F
Dielectric Withstand Voltage, RMS, conductive surface	1,500 Vac @ 60 Hz
Dielectric Withstand Voltage, RMS, contact-to-contact	1,000 Vac @ 60 Hz
Insulation Resistance, minimum	500 MOhm

Material Specifications

Contact Plating Material	Precious metals
Material Type	High-impact, flame retardant, thermoplastic Powder-coated steel
Termination Contact Plating	Nickel

Mechanical Specifications

Plug Insertion Life, minimum	750 times
Plug Insertion Life, test plug	IEC 60603-7 compliant plug
Plug Retention Force, minimum	133.447 N 30 lbf

Environmental Specifications

Operating Temperature	-10 °C to +60 °C (+14 °F to +140 °F)
Storage Temperature	-40 °C to +70 °C (-40 °F to +158 °F)
Relative Humidity	Up to 95%, non-condensing
Flammability Rating	UL 94 V-0
Safety Standard	UL cUL

Packaging and Weights

Packaging quantity	1
Weight, net	0.073 kg 0.16 lb

Regulatory Compliance/Certifications

Agency	Classification
CHINA-ROHS	Below maximum concentration value

760151183 | 360-IPR-1100-GS6-DM6

ISO 9001:2015

Designed, manufactured and/or distributed under this quality management system

REACH-SVHC

Compliant as per SVHC revision on www.commscope.com/ProductCompliance

ROHS

Compliant

UK-ROHS

Compliant

