

Base Product



InstaPATCH® Cu GigaSPEED XL® U/UTP Riser Preterminated Copper Cable, 360 1100 module to 1100 module, 6 links

This product will be discontinued on: January 31, 2025

Product Classification

Regional Availability	Asia Australia/New Zealand EMEA Latin America North America
Portfolio	CommScope®
Product Type	Copper trunk cable assembly
Product Brand	GigaSPEED XL® InstaPATCH® Cu

General Specifications

ANSI/TIA Category	6
Cable Type	U/UTP (unshielded)
Conductor Type	Solid
Interface, Connector A	360 1100 Evolve module
Interface Feature, connector A	Standard
Interface, Connector B	1100 module
Interface Feature, connector B	Standard
Link Count	6
Wiring	T568B

Dimensions

Cable Assembly Length Range (m)	2 – 90
Cable Assembly Length Range (ft)	7 – 295

Electrical Specifications

dc Resistance, maximum	0.3 ohm
Safety Voltage Rating	300 V

Ordering Tree

123456789101112

CAC-11HABBF050

Cable Type

1

A

Cat 6A X10D – U/UTP (Plenum)

B

Cat 6A X10D – U/UTP (Riser)

C

Cat 6A X10D – U/UTP (LSZH)

D

Cat 6A X10D – F/UTP (Plenum)

E

Cat 6A X10D – F/UTP (Riser)

F

Cat 6A X10D – F/UTP (LSZH)

G

Cat 6 XL – U/UTP (Plenum)

H

Cat 6 XL – U/UTP (Riser)

J

Cat 6 XL – U/UTP (LSZH)

Q

Cat 6A X10D – S/FTP (LSZH)

R

Cat 6 – U/UTP Class B Rated (LSZH)

S

Cat 6A – U/UTP Class B Rated (LSZH)

Y

Cat 6A X10D SD – U/UTP (Riser)

Connector A

1

A

Outlet* – Single Row Standard Density

B

Outlet* – Dual Row Standard Density

C

Outlet* – Dual Row High Density

G

RJ45 Plug* – Single Row Standard Density

H

RJ45 Plug* – Dual Row Standard Density

J

RJ45 Plug* – Dual Row High Density

N

1100 Module

R

360 1100 Evolve Module

S

OneLink 2x6

T

OneLink 2x4

X

Unterminated

Connector B

1

A

Outlet* – Single Row Standard Density

B

Outlet* – Dual Row Standard Density

C

Outlet* – Dual Row High Density

G

RJ45 Plug* – Single Row Standard Density

H

RJ45 Plug* – Dual Row Standard Density

J

RJ45 Plug* – Dual Row High Density

N

1100 Module

R

360 1100 Evolve Module

S

OneLink 2x6

T

OneLink 2x4

Link

1

B

6

2

C

8

3

D

12

4

E

16

5

F

18

6

G

24

Bundling

1

H

Hook-n-loop

2

S

Sleeving

Labeling

1

A

Generic Label

Orientation A

1

1

Trident Series Flat

2

2

Right Paired Flat

3

3

Right Series Flat

4

4

Left Paired Flat

5

5

Left Series Flat

6

6

Trident Paired Flat

7

A

Trident Series Angled

8

B

Right Paired Angled

9

C

Right Series Angled

10

D

Left Paired Angled

11

E

Left Series Angled

12

F

Trident Paired Angled

Orientation B

1

1

Trident Series Flat

2

2

Right Paired Flat

3

3

Right Series Flat

4

4

Left Paired Flat

5

5

Left Series Flat

6

6

Trident Paired Flat

7

A

Trident Series Angled

8

B

Right Paired Angled

9

C

Right Series Angled

10

D

Left Paired Angled

11

E

Left Series Angled

12

F

Trident Paired Angled

13

X

Not Applicable

Outlet Color

1

0

Not Applicable

2

1

Black (BK)

3

2

Blue (BL)

4

3

White (WH)

Jacket Color

1

8

White (WH)

2

C

Slate (SL)

3

Z

Blue (BL)

UOM

1

F

Foot

2

M

Meter

Length

1

12

XXX

Cords > 1m are authorized for use in channels and are an effective standalone method used to connect active devices

Cords < 1m are also valid elements for use in a channel or as an equipment interconnect, but due to their limited length are not guaranteed to meet component compliance requirements that were developed to assess the quality of longer cords

Environmental Specifications

Operating Temperature	-10 °C to +60 °C (+14 °F to +140 °F)
Environmental Space	Riser
Flammability Rating	UL 94 V-0

Regulatory Compliance/Certifications

Agency	Classification
ISO 9001:2015	Designed, manufactured and/or distributed under this quality management system

Included Products

1071E-4/23	– GigaSPEED XL® 1071E ETL Verified Category 6 U/UTP Cable, non-plenum, 4 pair count
760151167	– SYSTIMAX 360™ GigaSPEED XL® 1100GS3 Evolve Category 6 U/UTP Distribution Module, 6 port
360-IPR-1100-GS3-DM6	

Page 2 of 8

©2024 CommScope, Inc. All rights reserved. CommScope and the CommScope logo are registered trademarks of CommScope and/or its affiliates in the U.S. and other countries. For additional trademark information see <https://www.commscope.com/trademarks>. All product names, trademarks and registered trademarks are property of their respective owners. Revised: August 15, 2024

COMMScope®



GigaSPEED XL® 1071E ETL Verified Category 6 U/UTP Cable, non-plenum, 4 pair count

Product Classification

Regional Availability	Asia Australia/New Zealand EMEA Latin America North America
Portfolio	SYSTIMAX®
Product Type	Twisted pair cable
Product Brand	GigaSPEED XL®
Ordering Note	Not available in Europe, the Middle East, or Africa

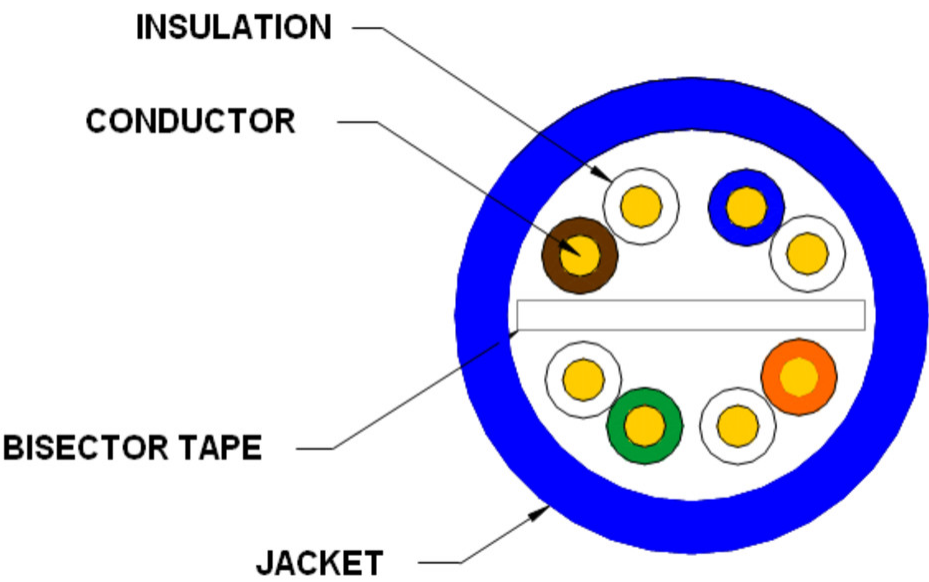
General Specifications

Product Number	1071E
ANSI/TIA Category	6
Cable Component Type	Horizontal
Cable Type	U/UTP (unshielded)
Conductor Type, singles	Solid
Conductors, quantity	8
Pairs, quantity	4
Separator Type	Bisector
Transmission Standards	ANSI/TIA-568.2-D CENELEC EN 50288-6-1 ISO/IEC 11801 Class E

Dimensions

Diameter Over Jacket, nominal	5.893 mm 0.232 in
Jacket Thickness	0.559 mm 0.022 in
Conductor Gauge, singles	23 AWG

Cross Section Drawing



Electrical Specifications

dc Resistance Unbalance, maximum	5 %
dc Resistance, maximum	7.61 ohms/100 m 2.32 ohms/100 ft
Dielectric Strength, minimum	1500 Vac 2500 Vdc
Mutual Capacitance at Frequency	5.6 nF/100 m @ 1 kHz
Nominal Velocity of Propagation (NVP)	69 %
Operating Frequency, maximum	300 MHz
Operating Voltage, maximum	80 V
Remote Powering	Fully complies with the recommendations set forth by IEEE 802.3bt (Type 4) for the safe delivery of power over LAN cable when installed according to ISO/IEC 14763-2, CENELEC EN 50174-1, CENELEC EN 50174-2 or TIA TSB-184-A

Material Specifications

Conductor Material	Bare copper
Insulation Material	Polyolefin
Jacket Material	PVC
Separator Material	Polyolefin

Mechanical Specifications

1071E-4/23

Pulling Tension, maximum 11.34 kg | 25 lb

Environmental Specifications

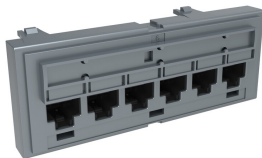
Installation temperature 0 °C to +60 °C (+32 °F to +140 °F)
Operating Temperature -20 °C to +60 °C (-4 °F to +140 °F)
Environmental Space Non-plenum
Temperature Rating, UL 75 °C | 167 °F
Flame Test Method CMG | CMR

Packaging and Weights

Cable weight 38.097 kg/km | 25.6 lb/kft

Regulatory Compliance/Certifications

Agency	Classification
ISO 9001:2015	Designed, manufactured and/or distributed under this quality management system



SYSTIMAX 360™ GigaSPEED XL® 1100GS3 Evolve Category 6 U/UTP Distribution Module, 6 port

Product Classification

Regional Availability	Asia Australia/New Zealand EMEA Latin America North America
Portfolio	SYSTIMAX®
Product Type	Module
Product Brand	GigaSPEED XL®

General Specifications

ANSI/TIA Category	6
Cable Type	Unshielded
Color	Cool gray
Conductor Type	Solid Stranded
Intelligence Type	iPatch® ready
Modules, quantity	1
Rack Type	EIA 19 in
Rack Units	1
Termination Type	IDC
Total Ports, quantity	6
Wiring	T568A T568B

Dimensions

Height	43.688 mm 1.72 in
Width	106.68 mm 4.2 in
Depth	27.432 mm 1.08 in
Compatible Diameter Over Dielectric, maximum	1.168 mm 0.046 in
Compatible Diameter Over Dielectric, minimum	0.762 mm 0.03 in
Compatible Conductor Gauge, solid	22 AWG 24 AWG

760151167 | 360-IPR-1100-GS3-DM6

Compatible Conductor Gauge, stranded		22 AWG 24 AWG
Electrical Specifications		
Current Rating at Temperature		1.5 A @ 20 °C 1.5 A @ 68 °F
Dielectric Withstand Voltage, RMS, conductive surface		1,500 Vac @ 60 Hz
Dielectric Withstand Voltage, RMS, contact-to-contact		1,000 Vac @ 60 Hz
Insulation Resistance, minimum		500 MOhm
Material Specifications		
Contact Plating Material		Precious metals
Material Type		High-impact, flame retardant, thermoplastic Powder-coated steel
Termination Contact Plating		Nickel
Mechanical Specifications		
Plug Insertion Life, minimum		750 times
Plug Insertion Life, test plug		IEC 60603-7 compliant plug
Plug Retention Force, minimum		133.447 N 30 lbf
Environmental Specifications		
Operating Temperature		-10 °C to +60 °C (+14 °F to +140 °F)
Storage Temperature		-40 °C to +70 °C (-40 °F to +158 °F)
Relative Humidity		Up to 95%, non-condensing
Flammability Rating		UL 94 V-0
Safety Standard		UL cUL
Packaging and Weights		
Packaging quantity		1
Weight, net		0.068 kg 0.15 lb
Regulatory Compliance/Certifications		
Agency	Classification	
CHINA-ROHS	Below maximum concentration value	
ISO 9001:2015	Designed, manufactured and/or distributed under this quality management system	
REACH-SVHC	Compliant as per SVHC revision on www.commscope.com/ProductCompliance	

ROHS	Compliant
UK-ROHS	Compliant

